



TEST DATA OF PBA50F-36

Regulated DC Power Supply
Apr.7. 2004

Approved by : Kuniaki Nagahara
Kuniaki Nagahara Design Manager

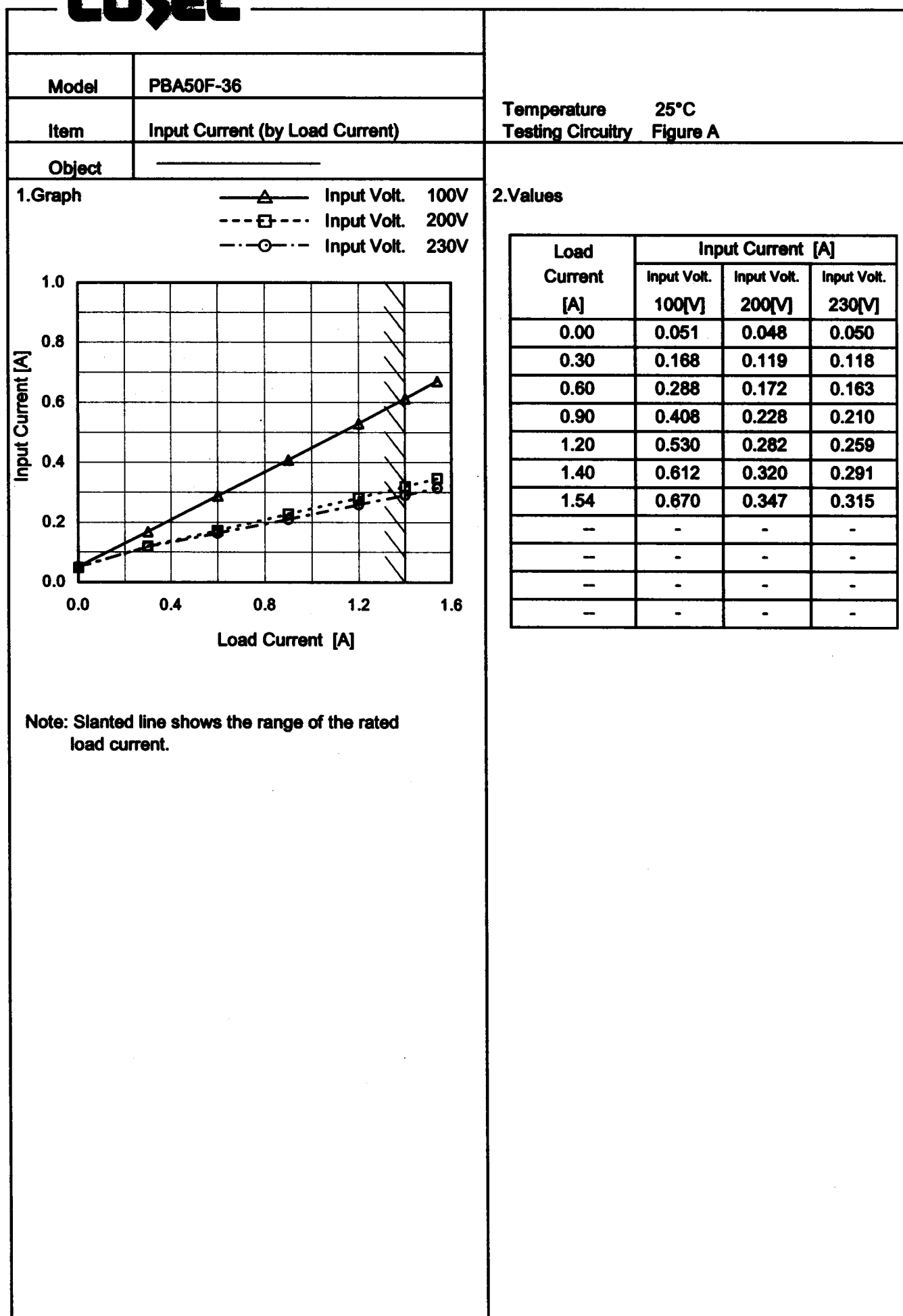
Prepared by : Koji Todo
Koji Todo Design Engineer

COSEL CO.,LTD.

CONTENTS

1.Input Current (by Load Current)	1
2.Input Power (by Load Current)	2
3.Efficiency (by Input Voltage)	3
4.Efficiency (by Load Current)	4
5.Power Factor (by Input Voltage)	5
6.Power Factor (by Load Current)	6
7.Inrush Current	7
8.Leakage Current	8
9.Line Regulation	9
10.Load Regulation	10
11.Dynamic Load Response	11
12.Ripple Voltage (by Load Current)	12
13.Ripple-Noise	13
14.Ripple Voltage (by Ambient Temperature)	14
15.Ambient Temperature Drift	15
16.Output Voltage Accuracy	16
17.Time Lapse Drift	17
18.Rise and Fall Time	18
19.Hold-Up Time	19
20.Instantaneous Interruption Compensation	20
21.Minimum Input Voltage for Regulated Output Voltage	21
22.Overcurrent Protection	22
23.Overvoltage Protection	23
24.Figure of Testing Circuitry	24

(Final Page 24)

COSEL

- 2 -

COSEL

Model		PBA50F-36	
Item		Efficiency (by Input Voltage)	
Object			

1.Graph

Load 50%

Load 100%

94

86

78

70

62

54

46

38

50

100

150

200

250

300

Efficiency [%]

Input Voltage [V]

2.Values

Input Voltage [V]	Efficiency [%]	
	Load 50%	Load 100%
75	76.8	80.3
85	77.5	81.8
100	78.9	82.9
120	78.9	83.8
200	78.9	85.0
230	78.9	85.8
264	78.9	85.8
280	78.9	85.8
—	-	-

Note: Slanted line shows the range of the rated input voltage.

- 4 -

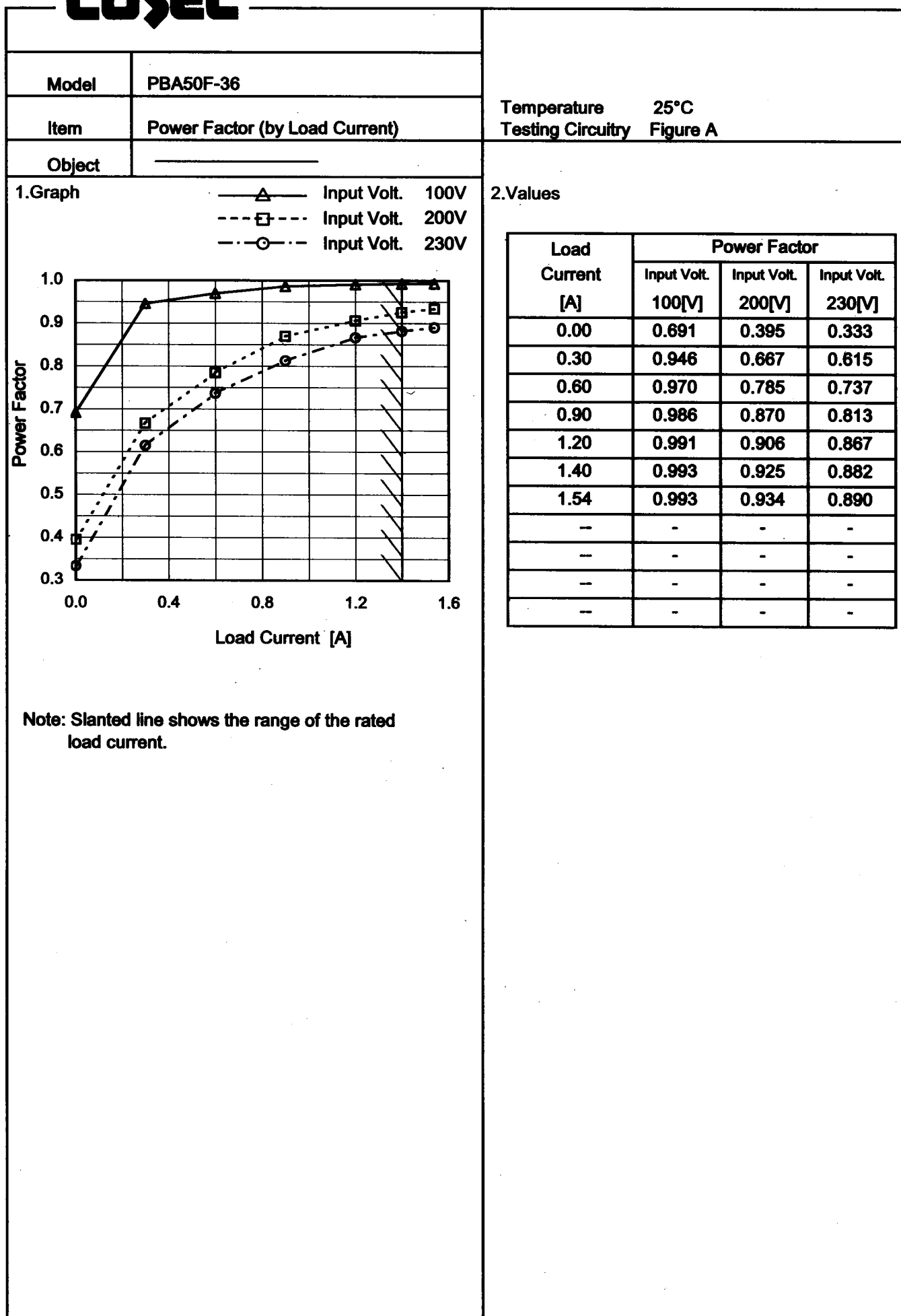
COSEL

Model		PBA50F-36	
Item		Power Factor (by Input Voltage)	
Object			

1.Graph

<

COSEL

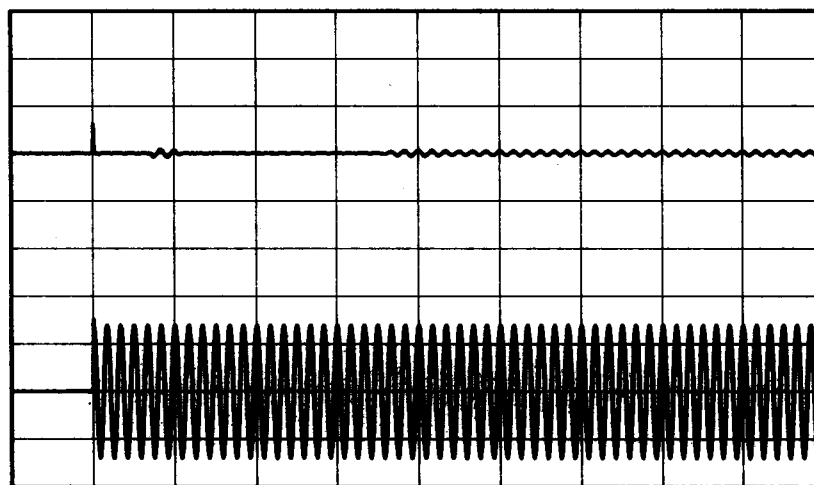


COSEL

Model	PBA50F-36	Temperature 25°C Testing Circuitry Figure A	
Item	Inrush Current		
Object	_____		

Input
Current
[20A/div]

Input
Voltage
[100V/div]



Time

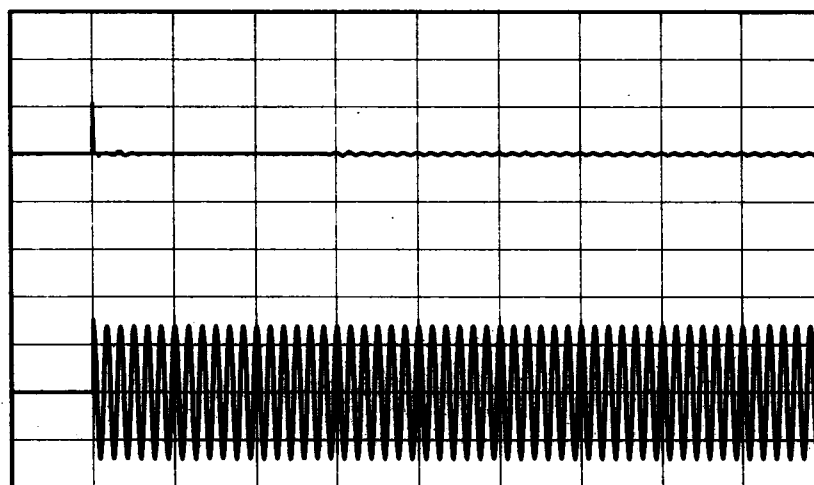
[100mS/div]

Input Voltage 100 V
Frequency 60 Hz
Load 100 %

Primary inrush current :
 12.2 A
Secondary inrush current :
 1.6 A

Input
Current
[20A/div]

Input
Voltage
[200V/div]



Time

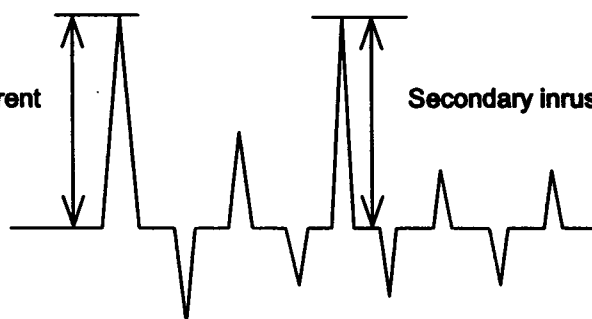
[100mS/div]

Input Voltage 200 V
Frequency 60 Hz
Load 100 %

Primary inrush current :
 21.3 A
Secondary inrush current :
 1.1 A

Primary inrush current

Secondary inrush current





		Temperature 25°C Testing Circuitry Figure B
Model	PBA50F-36	
Item	Leakage Current	
Object	_____	

1.Results

[mA]

Standards		Input Volt.			Note
		100 [V]	200 [V]	230 [V]	
DEN-AN	Both phases	0.18	0.30	0.34	Operation
	One of phase	0.22	0.48	0.55	stand by
IEC60950	Both phases	0.18	0.32	0.36	Operation
	One of phase	0.22	0.48	0.55	stand by

The value for "One phase" is the reference value only.

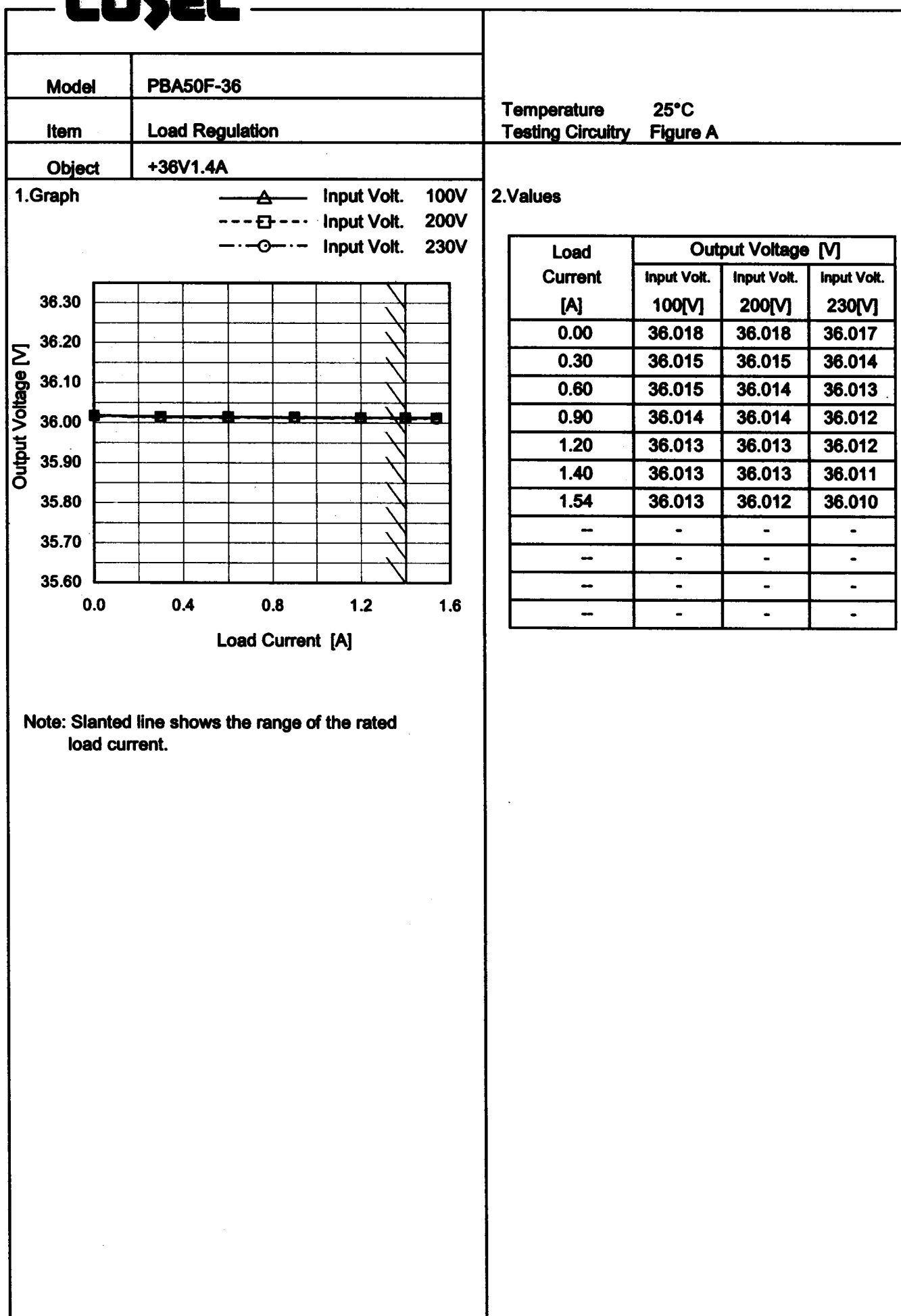
2.Condition

Leakage current value is concluded after measuring both phases of AC input and by choosing the larger one.

COSEL

Model		PBA50F-36	
Item		Line Regulation	
Object		+36V1.4A	
1.Graph		2.Values	

COSEL



COSEL

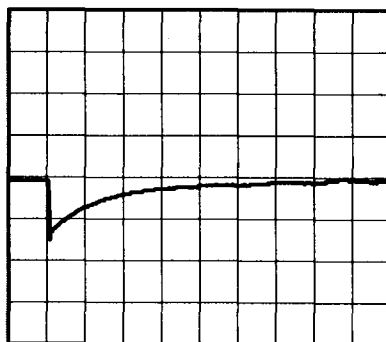
Model	PBA50F-36	Temperature	25°C
Item	Dynamic Load Response	Testing Circuitry	Figure A
Object	+36V1.4A		

Input Volt. 100 V
Cycle 1000 ms

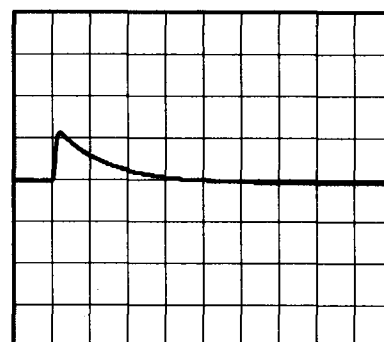
Load Current

Min. Load (0A) ←→
Load 100% (1.4A)

100 mV/div



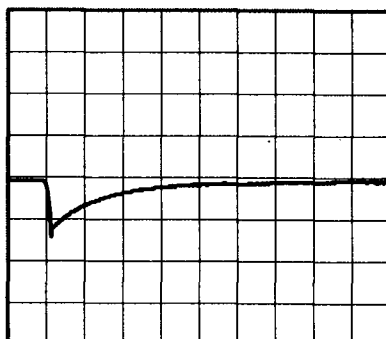
5 ms/div



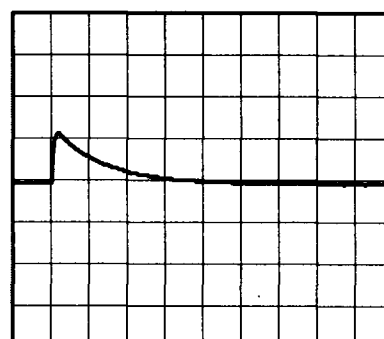
5 ms/div

Min. Load (0A) ←→
Load 50% (0.7A)

100 mV/div



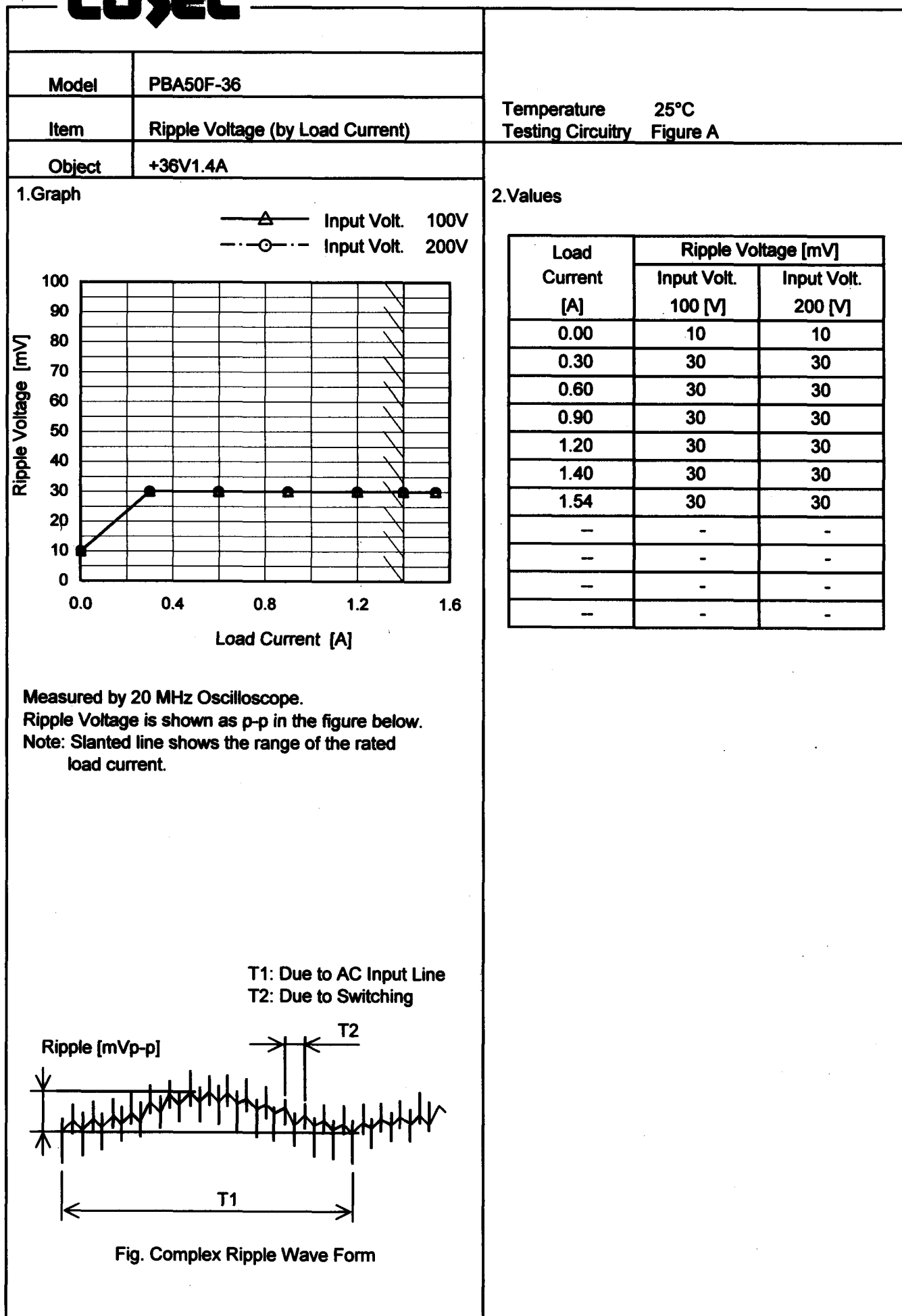
5 ms/div



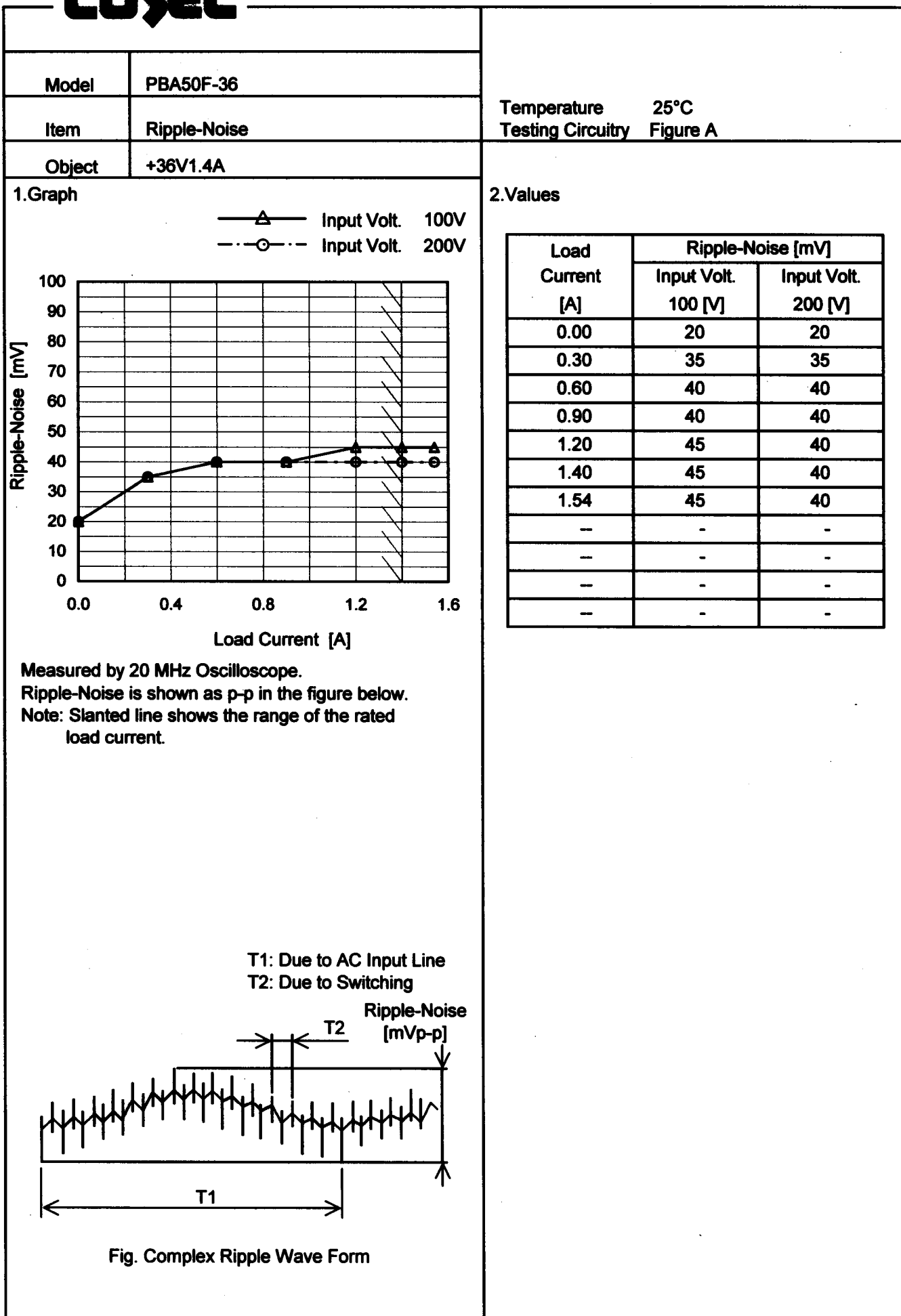
5 ms/div

* The characteristic of AC200V is equal.

COSEL



COSEL



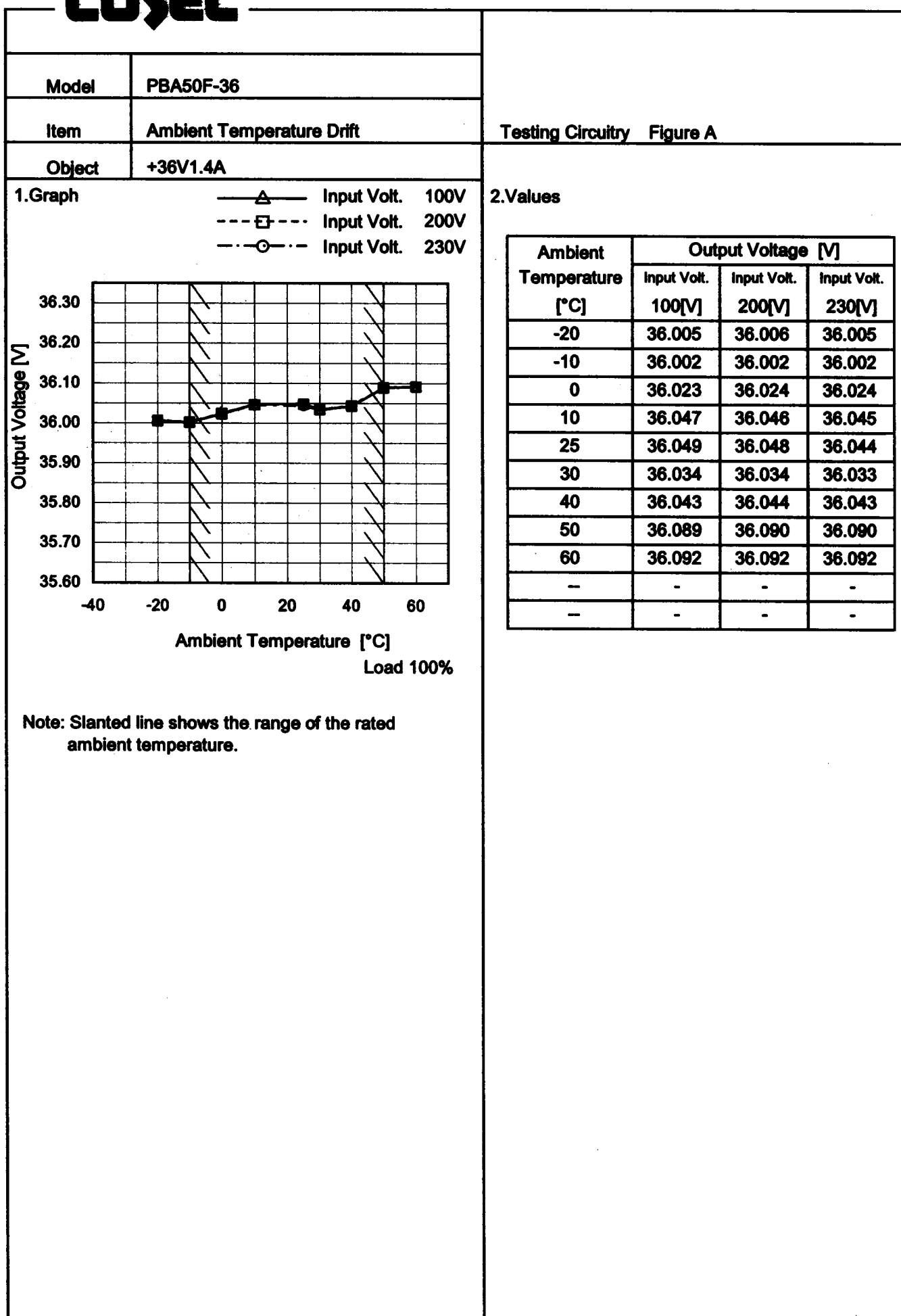
Testing Circuitry Figure A

2.Values

[illegible]

Note: Slanted line shows the range of the rated ambient temperature.

COSEL



COSEL

		Testing Circuitry Figure A
Model	PBA50F-36	
Item	Output Voltage Accuracy	
Object	+36V1.4A	

1. Output Voltage Accuracy

This is defined as the value of the output voltage, regulation load, ambient temperature and input voltage varied at random in the range as specified below.

Temperature : -10 - 50°C

Input Voltage : 85 - 264V

Load Current : 0 - 1.4A

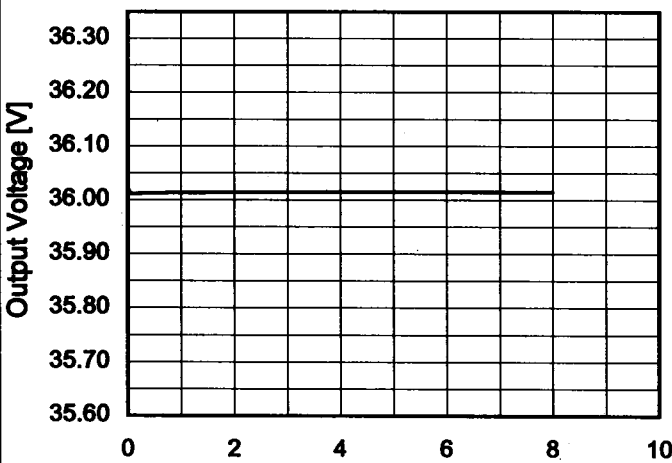
* Output Voltage Accuracy = $\pm(\text{Maximum of Output Voltage} - \text{Minimum of Output Voltage}) / 2$

* Output Voltage Accuracy (Ration) = $\frac{\text{Output Voltage Accuracy}}{\text{Rated Output Voltage}} \times 100$

2. Values

Item	Temperature [°C]	Input Voltage[V]	Output		Output Voltage Accuracy	
			Current[A]	Voltage[V]	Value [mV]	Ration [%]
Maximum Voltage	50	264	0	36.091	±45	±0.1
Minimum Voltage	-10	85	1.4	36.002		

COSEL

Model	PBA50F-36																								
Item	Time Lapse Drift	Temperature	25°C																						
Object	+36V1.4A	Testing Circuitry	Figure A																						
1.Graph		2.Values																							
<div><p>Output Voltage [V]</p><p>Time [H]</p><p>Input Volt. 100V</p><p>Load 100%</p></div>		<table><tr><th>Time since start [H]</th><th>Output Voltage [V]</th></tr><tr><td>0.0</td><td>36.022</td></tr><tr><td>0.5</td><td>36.013</td></tr><tr><td>1.0</td><td>36.013</td></tr><tr><td>2.0</td><td>36.014</td></tr><tr><td>3.0</td><td>36.015</td></tr><tr><td>4.0</td><td>36.015</td></tr><tr><td>5.0</td><td>36.015</td></tr><tr><td>6.0</td><td>36.015</td></tr><tr><td>7.0</td><td>36.016</td></tr><tr><td>8.0</td><td>36.016</td></tr></table>		Time since start [H]	Output Voltage [V]	0.0	36.022	0.5	36.013	1.0	36.013	2.0	36.014	3.0	36.015	4.0	36.015	5.0	36.015	6.0	36.015	7.0	36.016	8.0	36.016
Time since start [H]	Output Voltage [V]																								
0.0	36.022																								
0.5	36.013																								
1.0	36.013																								
2.0	36.014																								
3.0	36.015																								
4.0	36.015																								
5.0	36.015																								
6.0	36.015																								
7.0	36.016																								
8.0	36.016																								
* The characteristic of AC200V is equal.																									

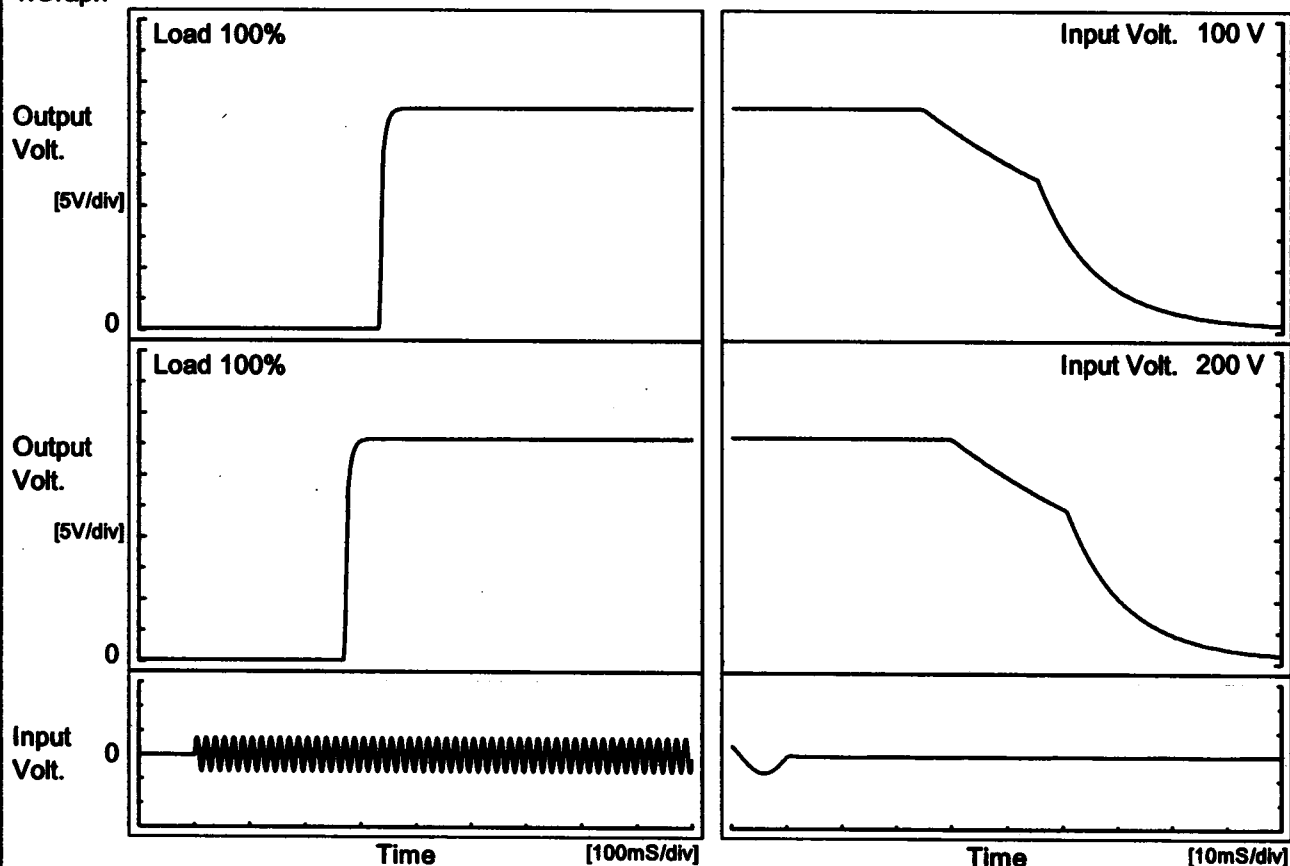
- 17 -

BC-3555

COSEL

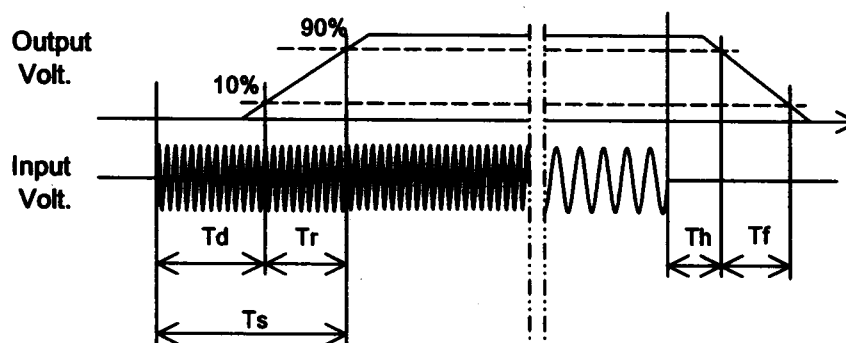
Model	PBA50F-36	Temperature	25°C
Item	Rise and Fall Time	Testing Circuitry	Figure A
Object	+36V1.4A		

1. Graph



2. Values

Input Volt.	Time	Td	Tr	Ts	Th	Tf
100 V		333.5	12.5	346.0	30.1	37.6
200 V		271.0	12.5	283.5	35.3	37.8



COSEL

Model	PBA50F-36		
Item	Hold-Up Time	Temperature	25°C
Object	+36V1.4A	Testing Circuitry	Figure A
1.Graph		2.Values	
<div><div><div></div><div></div></div><div><div></div><div></div></div><div><div></div><div></div></div><div><div></div><div></div></div><div><div></div><div></div></div><div><div></div><div></div></div><div><div></div><div></div></div><div><div></div><div></div></div><div><div></div><div></div></div><div><div></div><div></div></div><div><div></div><div></div></div><div><div></div><div></div></div><div><div></div><div></div></div><div><div></div><div></div></div><div><div></div><div></div></div><div><div></div><div></div></div><div><div></div><div></div></div><div><div></div><div></div></div><div><div></div><div></div></div><div><div></div><div></div></div><div><div></div><div></div></div><div><div></div><div></div></div><div><div></div><div></div></div><div><div></div><div></div></div><div><div></div><div></div></div><div><div></div><div></div></div><div><div></div><div></div></div><div><div></div><div></div></div><div><div></div><div></div></div><div><div></div><div></div></div><div><div></div><div></div></div><div><div></div><div></div></div><div><div></div><div></div></div><div><div></div><div></div></div><div><div></div><div></div></div><div><div></div><div></div></div><div><div></div><div></div></div><div><div></div><div></div></div><div><div></div><div></div></div><div><div></div><div></div></div><div><div></div><div></div></div><div><div></div><div></div></div><div><div></div><div></div></div><div><div></div><div></div></div><div><div></div><div></div></div><div><div></div><div></div></div><div><div></div><div></div></div><div><div></div><div></div></div><div><div></div><div></div></div><div><div></div><div></div></div><div><div></div><div></div></div><div><div></div><div></div></div><div><div></div><div></div></div><div><div></div><div></div></div><div><div></div><div></div></div><div><div></div><div></div></div><div><div></div><div></div></div><div><div></div><div></div></div><div><div></div><div></div></div><div><div></div><div></div></div><div><div></div><div></div></div><div><div></div><div></div></div><div><div></div><div></div></div><div><div></div><div></div></div><div><div></div><div></div></div><div><div></div><div></div></div><div><div></div><div></div></div><div><div></div><div></div></div><div><div></div><div></div></div><div><div></div><div></div></div><div><div></div><div></div></div><div><div></div><div></div></div><div><div></div><div></div></div><div><div></div><div></div></div><div><div></div><div></div></div><div><div></div><div></div></div><div><div></div><div></div></div><div><div></div><div></div></div><div><div></div><div></div></div><div><div></div><div></div></div><div><div></div><div></div></div><div><div></div><div></div></div><div><div></div><div></div></div><div><div></div><div></div></div><div><div></div><div></div></div><div><div></div><div></div></div><div><div></div><div></div></div><div><div></div><div></div></div><div><div></div><div></div></div><div><div></div><div></div></div><div><div></div><div></div></div><div><div></div><div></div></div><div><div></div><div></div></div><div><div></div><div></div></div><div><div></div><div></div></div><div><div></div><div></div></div><div><div></div><div></div></div><div><div></div><div></div></div><div><div></div><div></div></div><div><div></div><div></div></div><div><div></div><div></div></div><div><div></div><div></div></div><div><div></div><div></div></div><div><div></div><div></div></div><div><div></div><div></div></div><div><div></div><div></div></div><div><div></div><div></div></div><div><div></div><div></div></div><div><div></div><div></div></div><div><div></div><div></div></div><div><div></div><div></div></div><div><div></div><div></div></div><div><div></div><div></div></div><div><div></div><div></div></div><div><div></div><div></div></div><div><div></div><div></div></div><div><div></div><div></div></div><div><div></div><div></div></div><div><div></div><div></div></div><div><div></div><div></div></div><div><div></div><div></div></div><div><div></div><div></div></div><div><div></div><div></div></div><div><div></div><div></div></div><div><div></div><div></div></div><div><div></div><div></div></div><div><div></div><div></div></div><div><div></div><div></div></div><div><div></div><div></div></div><div><div></div><div></div></div><div><div></div><div></div></div><div><div></div><div></div></div><div><div></div><div></div></div><div><div></div><div></div></div><div><div></div><div></div></div><div><div></div><div></div></div><div><div></div><div></div></div><div><div></div><div></div></div><div><div></div><div></div></div><div><div></div><div></div></div><div><div></div><div></div></div><div><div></div><div></div></div><div><div></div><div></div></div><div><div></div><div></div></div><div><div></div><div></div></div><div><div></div><div></div></div><div><div></div><div></div></div><div><div></div><div></div></div><div><div></div><div></div></div><div><div></div><div></div></div><div><div></div><div></div></div><div><div></div><div></div></div><div><div></div><div></div></div><div><div></div><div></div></div><div><div></div><div></div></div><div><div></div><div></div></div><div><div></div><div></div></div><div><div></div><div></div></div><div><div></div><div></div></div><div><div></div><div></div></div><div><div></div><div></div></div><div><div></div><div></div></div><div><div></div><div></div></div><div><div></div><div></div></div><div><div></div><div></div></div><div><div></div><div></div></div><div><div></div><div></div></div><div><div></div><div></div></div><div><div></div><div></div></div><div><div></div><div></div></div><div><div></div><div></div></div><div><div></div><div></div></div><div><div></div><div></div></div><div><div></div><div></div></div><div><div></div><div></div></div><div><div></div><div></div></div><div><div></div><div></div></div><div><div></div><div></div></div><div><div></div><div></div></div><div><div></div><div></div></div><div><div></div><div></div></div><div><div></div><div></div></div><div><div></div><div></div></div><div><div></div><div></div></div><div><div></div><div></div></div><div><div></div><div></div></div><div><div></div><div></div></div><div><div></div><div></div></div><div><div></div><div></div></div><div><div></div><div></div></div><div><div></div><div></div></div><div><div></div><div></div></div><div><div></div><div></div></div><div><div></div><div></div></div><div><div></div><div></div></div><div><div></div><div></div></div><div><div></div><div></div></div><div><div></div><div></div></div><div><div></div><div></div></div><div><div></div><div></div></div><div><div></div><div></div></div><div><div></div><div></div></div><div><div></div><div></div></div><div><div></div><div></div></div><div><div></div><div></div></div><div><div></div><div></div></div><div><div></div><div></div></div><div><div></div><div></div></div><div><div></div><div></div></div><div><div></div><div></div></div><div><div></div><div></div></div><div><div></div><div></div></div><div><div></div><div></div></div><div><div></div><div></div></div><div><div></div><div></div></div><div><div></div><div></div></div><div><div></div><div></div></div><div><div></div><div></div></div><div><div></div><div></div></div><div><div></div><div></div></div><div><div></div><div></div></div><div><div></div><div></div></div><div><div></div><div></div></div><div><div></div><div></div></div><div><div></div><div></div></div><div><div></div><div></div></div><div><div></div><div></div></div><div><div></div><div></div></div><div><div></div><div></div></div><div><div></div><div></div></div><div><div></div><div></div></div><div><div></div><div></div></div><div><div></div><div></div></div><div><div></div><div></div></div><div><div></div><div></div></div><div><div></div><div></div></div><div><div></div><div></div></div><div><div></div><div></div></div><div><div></div><div></div></div><div><div></div><div></div></div><div><div></div><div></div></div><div><div></div><div></div></div><div><div></div><div></div></div><div><div></div><div></div></div><div><div></div><div></div></div><div><div></div><div></div></div><div><div></div><div></div></div><div><div></div><div></div></div><div><div></div><div></div></div><div><div></div><div></div></div><div><div></div><div></div></div><div><div></div><div></div></div><div><div></div><div></div></div><div><div></div><div></div></div><div><div></div><div></div></div><div><div></div><div></div></div><div><div></div><div></div></div><div><div></div><div></div></div><div><div></div><div></div></div><div><div></div><div></div></div><div><div></div><div></div></div><div><div></div><div></div></div><div><div></div><div></div></div><div><div></div><div></div></div><div><div></div><div></div></div><div><div></div><div></div></div><div><div></div><div></div></div><div><div></div><div></div></div><div><div></div><div></div></div><div><div></div><div></div></div><div><div></div><div></div></div><div><div></div><div></div></div><div><div></div><div></div></div><div><div></div><div></div></div><div><div></div><div></div></div><div><div></div><div></div></div><div><div></div><div></div></div><div><div></div><div></div></div><div><div></div><div></div></div><div><div></div><div></div></div><div><div></div><div></div></div><div><div></div><div></div></div><div><div></div><div></div></div><div><div></div><div></div></div><div><div></div><div></div></div><div><div></div><div></div></div><div><div></div><div></div></div><div><div></div><div></div></div><div><div></div><div></div></div><div><div></div><div></div></div><div><div></div><div></div></div><div><div></div><div></div></div><div><div></div><div></div></div><div><div></div><div></div></div><div><div></div><div></div></div><div><div></div><div></div></div><div><div></div><div></div></div><div><div></div><div></div></div><div><div></div><div></div></div><div><div></div><div></div></div><div><div></div><div></div></div><div><div></div><div></div></div><div><div></div><div></div></div><div><div></div><div></div></div><div><div></div><div></div></div><div><div></div><div></div></div><div><div></div><div></div></div><div><div></div><div></div></div><div><div></div><div></div></div><div><div></div><div></div></div><div><div></div><div></div></div><div><div></div><div></div></div><div><div></div><div></div></div><div><div></div><div></div></div><div><div></div><div></div></div><div><div></div><div></div></div><div><div></div><div></div></div><div><div></div><div></div></div><div><div></div><div></div></div><div><div></div><div></div></div><div><div></div><div></div></div><div><div></div><div></div></div><div><div></div><div></div></div><div><div></div><div></div></div><div><div></div><div></div></div><div><div></div><div></div></div><div><div></div><div></div></div><div><div></div><div></div></div><div><div></div><div></div></div><div><div></div><div></div></div><div><div></div><div></div></div><div><div></div><div></div></div><div><div></div><div></div></div><div><div></div><div></div></div><div><div></div><div></div></div><div><div></div><div></div></div><div><div></div><div></div></div><div><div></div><div></div></div><div><div></div><div></div></div><div><div></div><div></div></div><div><div></div><div></div></div><div><div></div><div></div></div><div><div></div><div></div></div><div><div></div><div></div></div><div><div></div><div></div></div><div><div></div><div></div></div><div><div></div><div></div></div><div><div></div><div></div></div><div><div></div><div></div></div><div><div></div><div></div></div><div><div></div><div></div></div><div><div></div><div></div></div><div><div></div><div></div></div><div><div></div><div></div></div><div><div></div><div></div></div><div><div></div><div></div></div><div><div></div><div></div></div><div><div></div><div></div></div><div><div></div><div></div></div><div><div></div><div></div></div><div><div></div><div></div></div><div><div></div><div></div></div><div><div></div><div></div></div><div><div></div><div></div></div><div><div></div><div></div></div><div><div></div><div></div></div><div><div></div><div></div></div><div><div></div><div></div></div><div><div></div><div></div></div><div><div></div><div></div></div><div><div></div><div></div></div><div><div></div><div></div></div><div><div></div><div></div></div><div><div></div><div></div></div><div><div></div><div></div></div><div><div></div><div></div></div><div><div></div><div></div></div><div><div></div><div></div></div><div><div></div><div></div></div><div><div></div><div></div></div><div><div></div><div></div></div><div><div></div><div></div></div><div><div></div><div></div></div><div><</div></div>			

COSEL

Model	PBA50F-36																																																					
Item	Instantaneous Interruption Compensation	Temperature	25°C																																																			
Object	+36V1.4A	Testing Circuitry	Figure A																																																			
1.Graph		2.Values																																																				
<div><div><div>—△—</div><div>Input Volt. 100V</div></div><div><div>---□---</div><div>Input Volt. 200V</div></div><div><div>---○---</div><div>Input Volt. 230V</div></div></div> <p>Instantaneous Compensation Time [mS]</p> <p>Load Current [A]</p> <p>Note: Slanted line shows the range of the rated load current.</p>		<table><tr><th rowspan="2">Load Current [A]</th><th colspan="3">Time [mS]</th></tr><tr><th>Input Volt. 100[V]</th><th>Input Volt. 200[V]</th><th>Input Volt. 230[V]</th></tr><tr><td>0.00</td><td>-</td><td>-</td><td>-</td></tr><tr><td>0.30</td><td>108</td><td>137</td><td>138</td></tr><tr><td>0.60</td><td>66</td><td>73</td><td>74</td></tr><tr><td>0.90</td><td>42</td><td>48</td><td>55</td></tr><tr><td>1.20</td><td>33</td><td>36</td><td>38</td></tr><tr><td>1.40</td><td>26</td><td>31</td><td>32</td></tr><tr><td>1.54</td><td>21</td><td>28</td><td>29</td></tr><tr><td>—</td><td>-</td><td>-</td><td>-</td></tr><tr><td>—</td><td>-</td><td>-</td><td>-</td></tr><tr><td>—</td><td>-</td><td>-</td><td>-</td></tr><tr><td>—</td><td>-</td><td>-</td><td>-</td></tr></table>		Load Current [A]	Time [mS]			Input Volt. 100[V]	Input Volt. 200[V]	Input Volt. 230[V]	0.00	-	-	-	0.30	108	137	138	0.60	66	73	74	0.90	42	48	55	1.20	33	36	38	1.40	26	31	32	1.54	21	28	29	—	-	-	-	—	-	-	-	—	-	-	-	—	-	-	-
Load Current [A]	Time [mS]																																																					
	Input Volt. 100[V]	Input Volt. 200[V]	Input Volt. 230[V]																																																			
0.00	-	-	-																																																			
0.30	108	137	138																																																			
0.60	66	73	74																																																			
0.90	42	48	55																																																			
1.20	33	36	38																																																			
1.40	26	31	32																																																			
1.54	21	28	29																																																			
—	-	-	-																																																			
—	-	-	-																																																			
—	-	-	-																																																			
—	-	-	-																																																			

COSEL

Model

PBA50F-36

Item

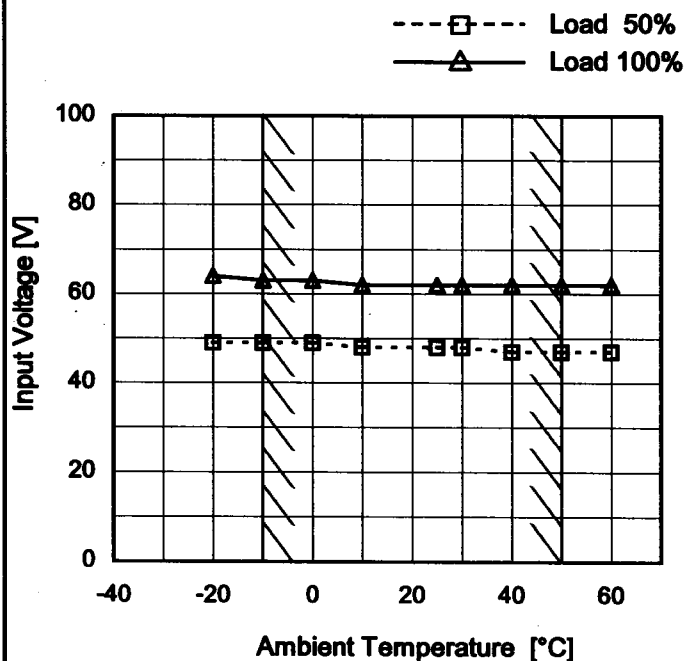
Minimum Input Voltage
for Regulated Output Voltage

Object

+36V1.4A

Testing Circuitry Figure A

1. Graph



Note: Slanted line shows the range of the rated ambient temperature.

2. Values

Ambient Temperature [°C]	Input Voltage [V]	
	Load 50%	Load 100%
-20	49	64
-10	49	63
0	49	63
10	48	62
25	48	62
30	48	62
40	47	62
50	47	62
60	47	62
—	—	—
—	—	—

COSEL

Model	PBA50F-36																																														
Item	Overcurrent Protection	Temperature	25°C																																												
Object	+36V1.4A	Testing Circuitry	Figure A																																												
1.Graph		2.Values																																													
<div><div><div></div>Input Volt. 100V</div><div><div></div>Input Volt. 200V</div></div> <p>Output Voltage [V]</p> <p>Load Current [A]</p> <p>Note: Slanted line shows the range of the rated load current.</p> <p>Intermittent operation occurs when the output voltage is from 18V to 0V.</p>		<table><tr><th rowspan="2">Output Voltage [V]</th><th colspan="2">Load Current [A]</th></tr><tr><th>Input Volt. 100[V]</th><th>Input Volt. 200[V]</th></tr><tr><td>36.0</td><td>1.44</td><td>1.44</td></tr><tr><td>34.2</td><td>1.77</td><td>1.77</td></tr><tr><td>32.4</td><td>1.78</td><td>1.78</td></tr><tr><td>28.8</td><td>1.82</td><td>1.82</td></tr><tr><td>25.2</td><td>1.84</td><td>1.84</td></tr><tr><td>21.6</td><td>1.86</td><td>1.85</td></tr><tr><td>18.0</td><td>1.86</td><td>1.86</td></tr><tr><td>--</td><td>-</td><td>-</td></tr><tr><td>--</td><td>-</td><td>-</td></tr><tr><td>--</td><td>-</td><td>-</td></tr><tr><td>--</td><td>-</td><td>-</td></tr><tr><td>--</td><td>-</td><td>-</td></tr><tr><td>--</td><td>-</td><td>-</td></tr></table>		Output Voltage [V]	Load Current [A]		Input Volt. 100[V]	Input Volt. 200[V]	36.0	1.44	1.44	34.2	1.77	1.77	32.4	1.78	1.78	28.8	1.82	1.82	25.2	1.84	1.84	21.6	1.86	1.85	18.0	1.86	1.86	--	-	-	--	-	-	--	-	-	--	-	-	--	-	-	--	-	-
Output Voltage [V]	Load Current [A]																																														
	Input Volt. 100[V]	Input Volt. 200[V]																																													
36.0	1.44	1.44																																													
34.2	1.77	1.77																																													
32.4	1.78	1.78																																													
28.8	1.82	1.82																																													
25.2	1.84	1.84																																													
21.6	1.86	1.85																																													
18.0	1.86	1.86																																													
--	-	-																																													
--	-	-																																													
--	-	-																																													
--	-	-																																													
--	-	-																																													
--	-	-																																													

COSEL

Model		PBA50F-36
Item		Overvoltage Protection
Object		+36V1.4A

1.Graph

△

Input Volt. 100V

□

Input Volt. 200V

Operating Point [V]

<

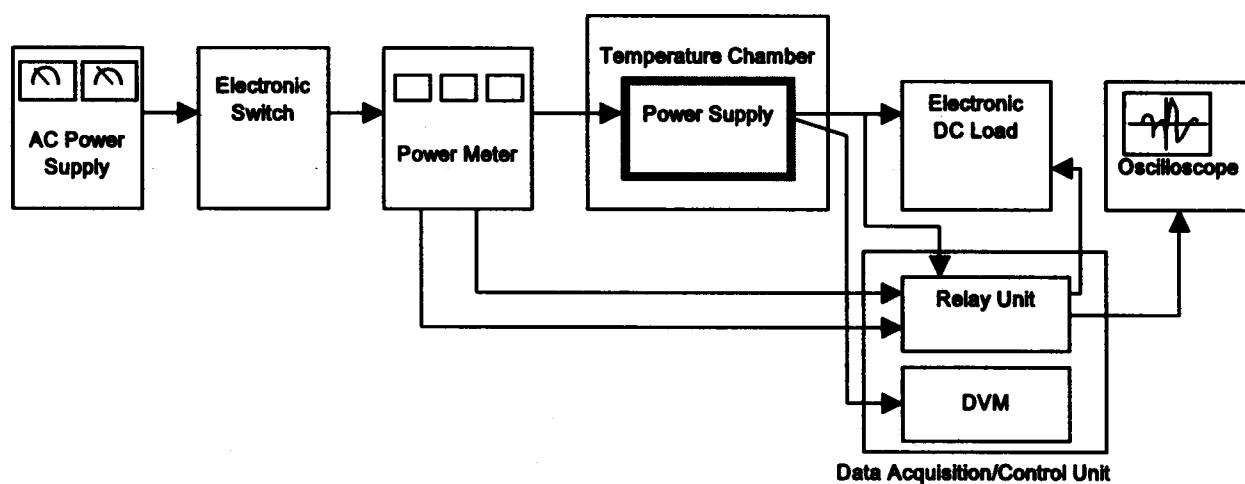


Figure A

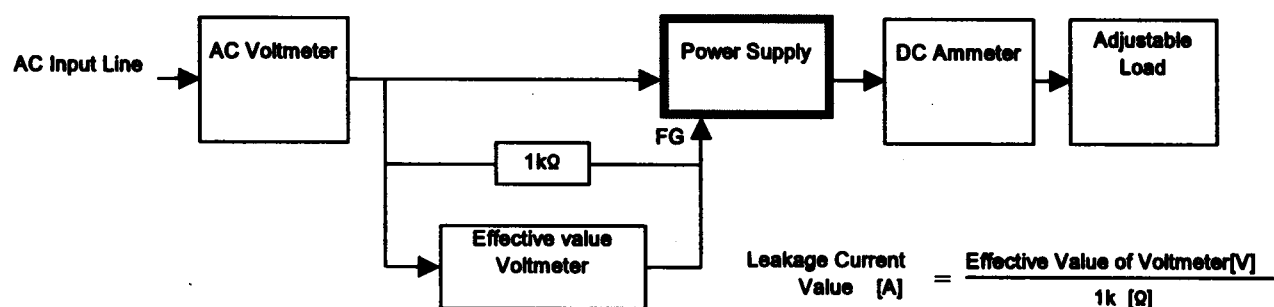


Figure B (DEN-AN)

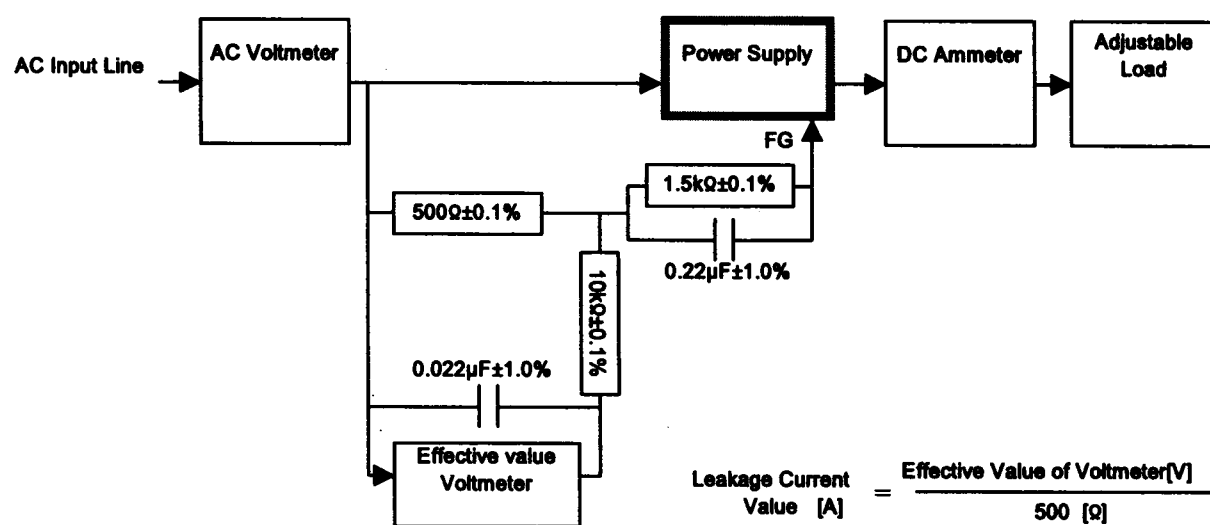


Figure B (IEC60950)