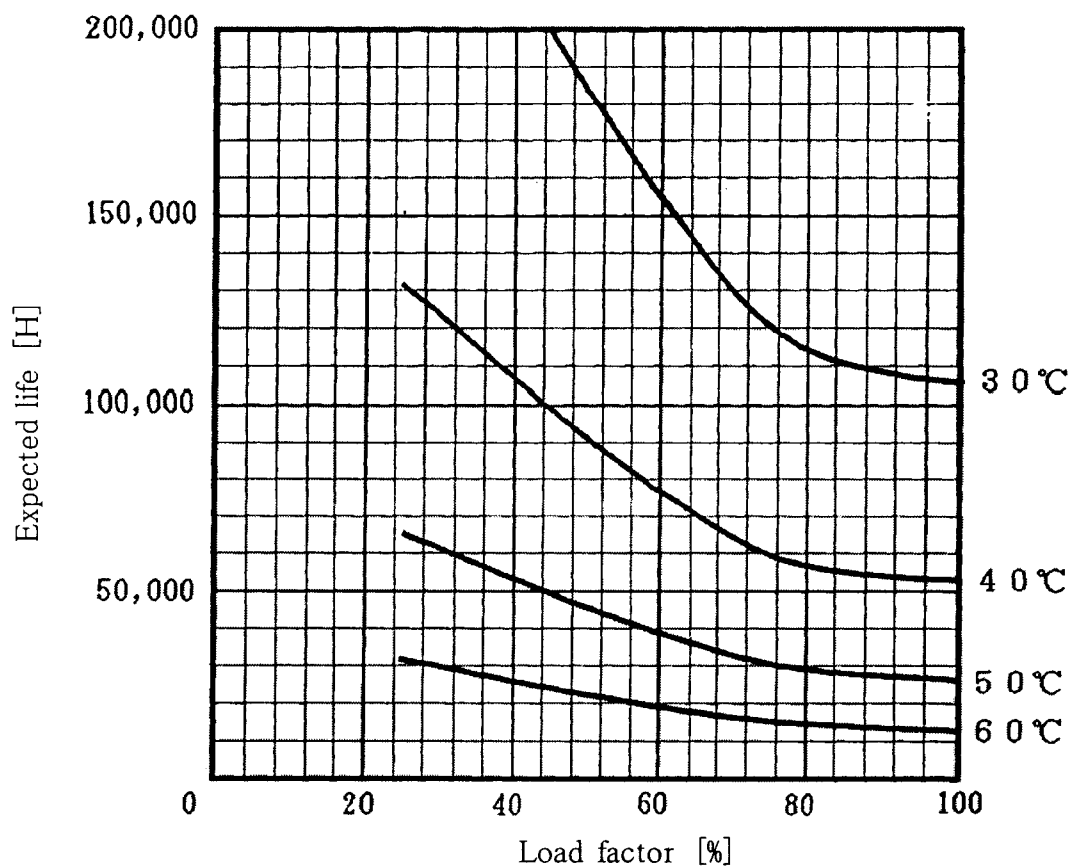


PMC15-3 Expected Life : 推定寿命



- Above expected life time is calculated according our calculation standard.
上記推定寿命は、当社算出基準に従い算出したものです。
- Over the area of 100,000 hours, the degradation of sealing rubber, etc., is not included in the calculation.
10万時間以上の領域では、封ロムの劣化等の影響は、計算式には含まれていません。
- Please refer derating curve shown in instruction manual about the maximum value of ambient temperature.
周囲温度の上限は、取扱説明書のデレーティング表をご参照ください。

Conditions

(1)Input voltage

AC100V 60Hz

(2)Output voltage/
current

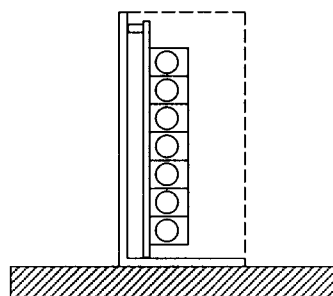
| DC OUTPUT | Load factor | | | |
|--------------|-------------|--------|-------|--------|
| | 100% | 75% | 50% | 25% |
| 5V | 2A | 1.5A | 1A | 0.5A |
| 12V | 0.3A | 0.225A | 0.15A | 0.075A |
| -5V | 0.2A | 0.15A | 0.1A | 0.05A |

(3)Cooling method

Convection

(4)Mounting method

Refer below



Mounting method(A)