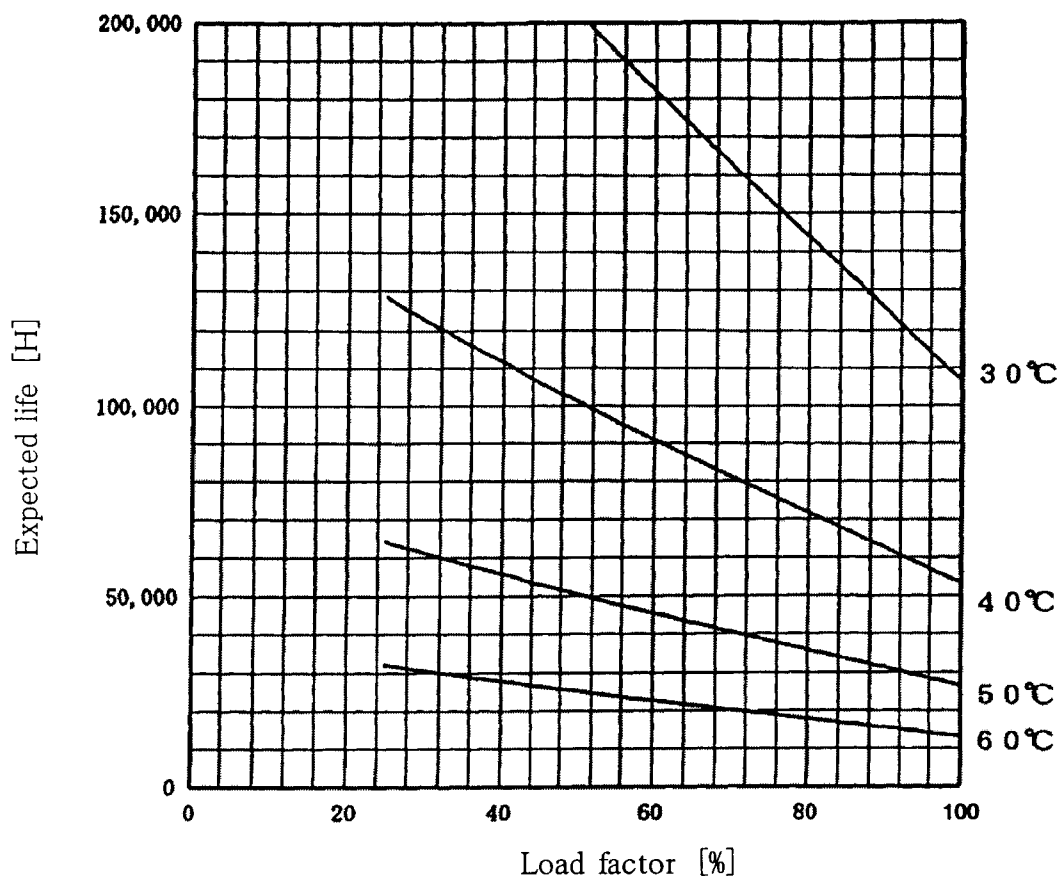


PMC75-2 Expected Life : 推定寿命



- Above expected life time is calculated according our calculation standard.
上記推定寿命は、当社算出基準に従い算出したものです。
- Over the area of 100,000 hours, the degradation of sealing rubber, etc., is not included in the calculation.
10万時間以上の領域では、封ロゴムの劣化等の影響は、計算式には含まれていません。
- Please refer derating curve shown in instruction manual about the maximum value of ambient temperature.
周囲温度の上限は、取扱説明書のディレーティング表をご参照ください。

Conditions

(1)Input voltage

AC100V 60Hz

(2)Output voltage/
current

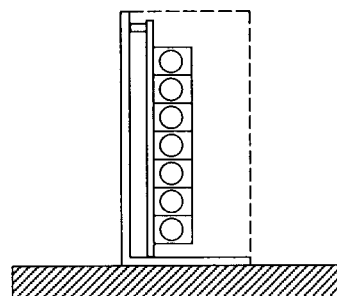
DC OUTPUT	Load factor			
	100%	75%	50%	25%
5V	8A	6A	4A	2A
15V	1.8A	1.35A	0.9A	0.45A
-15V	0.5A	0.38A	0.25A	0.13A

(3)Cooling method

Convection

(4)Mounting method

Refer below



Mounting method(A)