

DATA SHEET							Date	09-Jun-06	
Model	SFCS152405						Temp.	25degreeC	
Test	EMI Line conduction & Radiated emission						Humid.	45 %RH	
							Tested by	S.Shiina	

LINE CONDUCTION

Model Name : SFCS152405 Temp. : 25degreeC

Model No. : Humi. : 45%

Serial No. : Date : 2006/6/9 11:08

Points : 3 Test Equip. : R3132,ESPC

Detector : PEAK/QP/Ave. Load Line : 100mm

Line Mode : VA/VB Comment :

Power Supply : DC 24V

Limit1: [CISPR Pub11] Class A Gr.1(QP)

Limit2: [CISPR Pub11] Class A Gr.1(Ave.)

Testing circuitry 2

Frequency [MHz]	Meter Reading (Ave.) [dBuV]	Meter Reading (QP) [dBuV]	Factor [dB]	Level(Ave.) [dBuV]	Level(QP) [dBuV]	Line	Limit(Ave.) [dBuV]	Limit(QP) [dBuV]	Margin(Ave.) [dB]	Margin(QP) [dB]
0.5731	27.6	27.6	9.9	37.5	37.5	VA	60	73	22.5	35.5
0.1538	27.3	32.4	9.8	37.1	42.2	VB	66	79	28.9	36.8
23.5497	28.4	28.1	10.3	38.7	38.4	VB	60	73	21.3	34.6

RADIATED EMISSION

Model Name : SFCS152405 Temp. : 25degreeC

Model No. : Humi. : 45%

Serial No. : Date : 2006/6/9 10:16

Points : 3 Test Equip. : R3132,ESPC

Detector : PEAK/QP Load Line : 100mm

Polarization : Vertical Comment :

Power Supply :

Limit: [CISPR 11] Class A Group 1<3m>

Testing circuitry 2

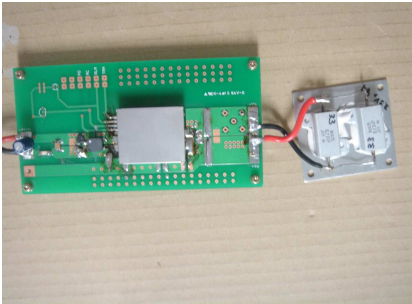
Frequency [MHz]	MeterReading (QP) [dBuV]	Ant. Type	Antenna Factor [dB/m]	Cable & Preamp [dB]	Level(QP) [dBuV/m]	Angle [°]	Height [cm]	Polar.	Limit [dBuV/m]	Margin [dB]
31.059	53.7	BL	17.7	-32.3	39.1	349	100	Vert.	50	10.9
255.837	64.6	BL	13.2	-31.1	46.7	105	123	Vert.	57	10.3

DATA SHEET		Date	09-Jun-06
Model	SFCS152405	Temp.	25degreeC
Test	EMI Line conduction & Radiated emission	Humid.	45 %RH
		Tested by	S.Shiina

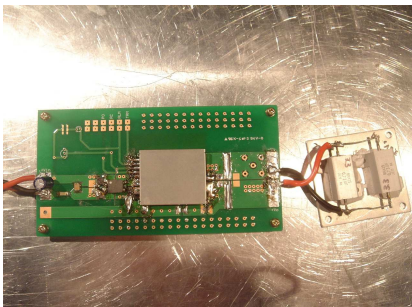
1.Conditions

(1)Photographs of Test Set-Up

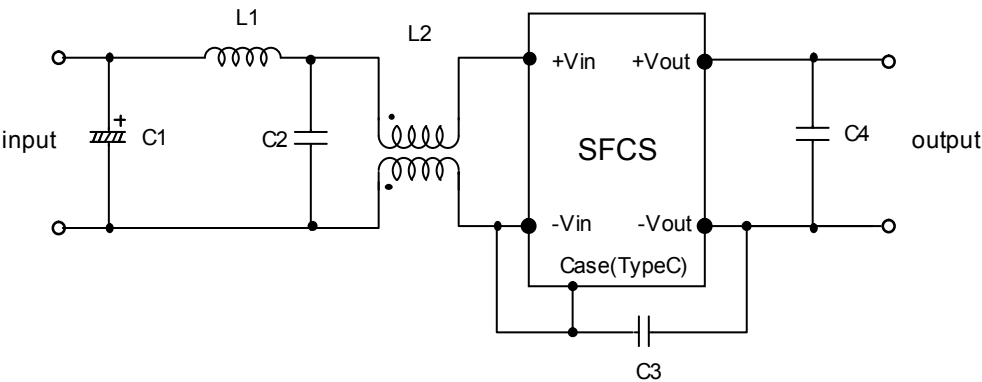
LINE CONDUCTION



Radiated emission



(2)Testing circuitry



- C1 : 47 μ F 50V Electric capacitor
- C2 : 1 μ F 100V Ceramic capacitor
- C3 : 1000pF 630V Ceramic capacitor
- C4 : 22 μ F 16V Ceramic capacitor
- L1 : 1 μ H 2.4A Inductor
- L2 : ZJYS51R5-2P : TDK

Fig. Testing circuitry2

DATA SHEET							Date	09-Jun-06	
Model	SFCS152405						Temp.	25degreeC	
Test	EMI Line conduction & Radiated emission						Humid.	45 %RH	
							Tested by	S.Shiina	

LINE CONDUCTION

Model Name : SFCS152405 Temp. : 25degreeC

Model No. : Humi. : 45%

Serial No. : Date : 2006/6/9 11:00

Points : 3 Test Equip. : R3132,ESPC

Detector : PEAK/QP/Ave. Load Line : 100mm

Line Mode : VA/VB Comment :

Power Supply :

Limit1: [CISPR Pub11] Class A Gr.1(QP)

Limit2: [CISPR Pub11] Class A Gr.1(Ave.)

Testing circuitry 1

Frequency [MHz]	Meter Reading (Ave.) [dBuV]	Meter Reading (QP) [dBuV]	Factor [dB]	Level(Ave.) [dBuV]	Level(QP) [dBuV]	Line	Limit(Ave.) [dBuV]	Limit(QP) [dBuV]	Margin(Ave.) [dB]	Margin(QP) [dB]
20.6798	30.9	30.4	10.3	41.2	40.7	VA	60	73	18.8	32.3
0.1594	26.8	32.2	9.8	36.6	42	VB	66	79	29.4	37
0.5753	27.2	27.2	9.9	37.1	37.1	VB	60	73	22.9	35.9

RADIATED EMISSION

Model Name : SFCS152405 Temp. : 25degreeC

Model No. : Humi. : 45%

Serial No. : Date : 2006/6/9 10:40

Points : 4 Test Equip. : R3132,ESPC

Detector : PEAK/QP Load Line : 100mm

Polarization : Hori. & Vert. Comment :

Power Supply :

Limit: [CISPR 11] Class A Group 1<3m>

Testing circuitry 1

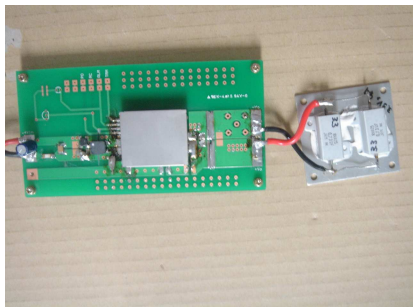
Frequency [MHz]	MeterReading (QP) [dBuV]	Ant. Type	Antenna Factor [dB/m]	Cable & Preamp [dB]	Level(QP) [dBuV/m]	Angle [°]	Height [cm]	Polar.	Limit [dBuV/m]	Margin [dB]
31.073	53.4	BL	17.7	-32.3	38.8	41	101	Vert.	50	11.2
255.423	63.5	BL	13.1	-31.1	45.5	120	113	Vert.	57	11.5

DATA SHEET		Date	09-Jun-06
Model	SFCS152405	Temp.	25degreeC
Test	EMI Line conduction & Radiated emission	Humid.	45 %RH
		Tested by	S.Shiina

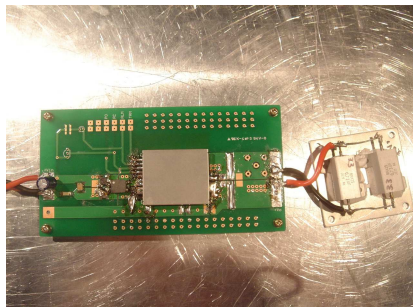
1.Conditions

(1)Photographs of Test Set-Up

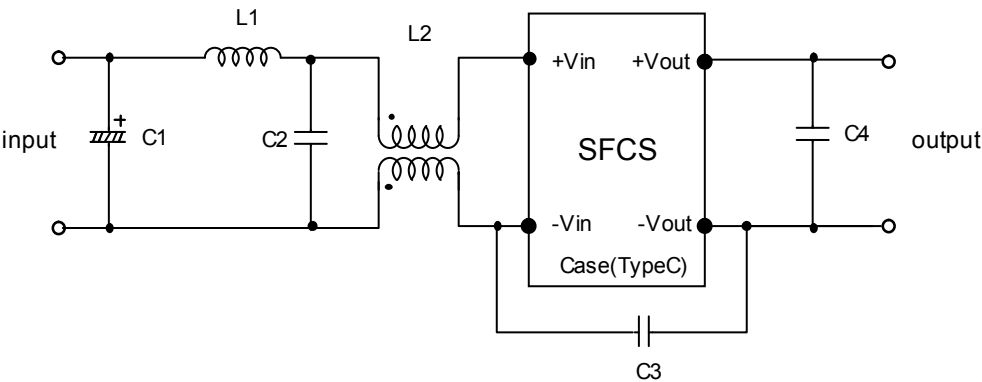
LINE CONDUCTION



Radiated emission



(2)Testing circuitry



- C1 : 47 μ F 50V Electric capacitor

C2 : 1 μ F 100V Ceramic capacitor

C3 : 1000pF 630V Ceramic capacitor

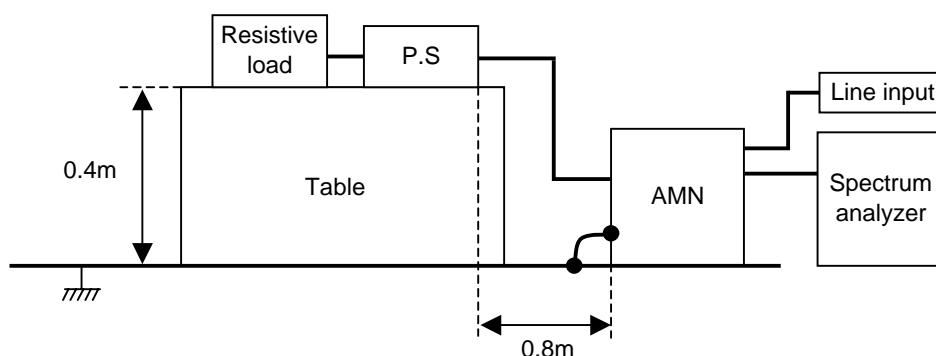
C4 : 22 μ F 16V Ceramic capacitor
- L1 : 1 μ H 2.4A Inductor

L2 : ZJYS51R5-2P : TDK

Fig. Testing circuitry1

DATA SHEET		Date	09-Jun-06
Model	Circuit used for measurement	Temp.	25 degreeC
Test	EMI Line conduction & Radiated emission	Humid.	45 %RH
		Tested by	S.Shiina

1. Line conduction



2. Radiated emission

