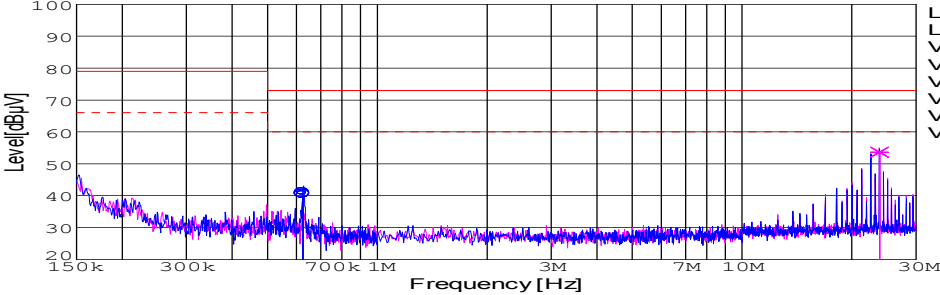
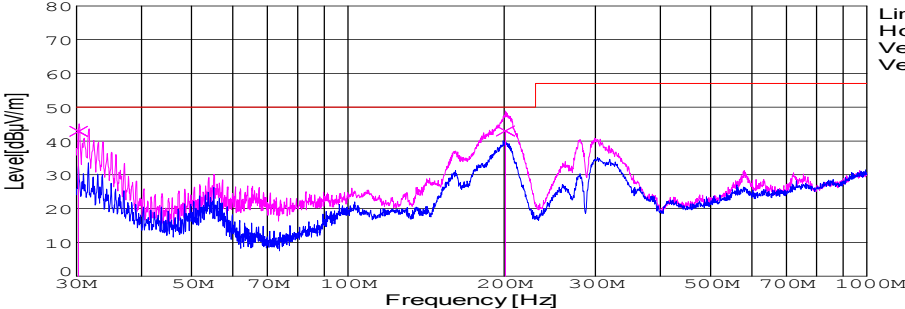


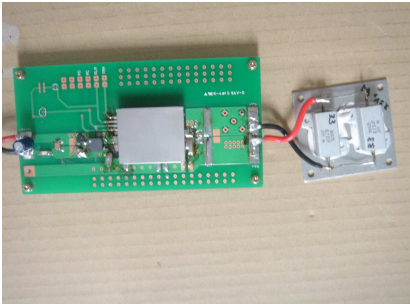
DATA SHEET							Date	24-Aug-06																																			
Model	SFCS152412						Temp.	25degreeC																																			
Test	EMI Line conduction & Radiated emission						Humid.	45 %RH																																			
							Tested by	S.Shiina																																			
LINE CONDUCTION																																											
Model Name		SFCS152412			Temp.		25degreeC																																				
Model No.					Humi.		45%																																				
Serial No.					Date		2006/8/24 16:28																																				
Points		2			Test Equip.		R3132,ESPC																																				
Detector		PEAK/QP/Ave.			Load Line		100mm																																				
Line Mode		VA/VB			Comment																																						
Power Supply		DC 24V																																									
Limit1:		[CISPR Pub11] Class A Gr.1(QP)																																									
Limit2:		[CISPR Pub11] Class A Gr.1(Ave.)																																									
							Limit1(QP) Limit2(Ave.) VA(PEAK) VB(PEAK) VA(QP) VA(Ave.) VB(QP) VB(Ave.)		Testing circuitry 2																																		
<table><tr><th>Frequency [MHz]</th><th>Meter Reading (Ave.) [dBuV]</th><th>Meter Reading (QP) [dBuV]</th><th>Factor [dB]</th><th>Level(Ave.) [dBuV]</th><th>Level(QP) [dBuV]</th><th>Line</th><th>Limit(Ave.) [dBuV]</th><th>Limit(QP) [dBuV]</th><th>Margin(Ave.) [dB]</th><th>Margin(QP) [dB]</th></tr><tr><td>0.6248</td><td>31</td><td>30.8</td><td>9.9</td><td>40.9</td><td>40.7</td><td>VA</td><td>60</td><td>73</td><td>19.1</td><td>32.3</td></tr><tr><td>23.7874</td><td>43.4</td><td>43.3</td><td>10.3</td><td>53.7</td><td>53.6</td><td>VB</td><td>60</td><td>73</td><td>6.3</td><td>19.4</td></tr></table>											Frequency [MHz]	Meter Reading (Ave.) [dBuV]	Meter Reading (QP) [dBuV]	Factor [dB]	Level(Ave.) [dBuV]	Level(QP) [dBuV]	Line	Limit(Ave.) [dBuV]	Limit(QP) [dBuV]	Margin(Ave.) [dB]	Margin(QP) [dB]	0.6248	31	30.8	9.9	40.9	40.7	VA	60	73	19.1	32.3	23.7874	43.4	43.3	10.3	53.7	53.6	VB	60	73	6.3	19.4
Frequency [MHz]	Meter Reading (Ave.) [dBuV]	Meter Reading (QP) [dBuV]	Factor [dB]	Level(Ave.) [dBuV]	Level(QP) [dBuV]	Line	Limit(Ave.) [dBuV]	Limit(QP) [dBuV]	Margin(Ave.) [dB]	Margin(QP) [dB]																																	
0.6248	31	30.8	9.9	40.9	40.7	VA	60	73	19.1	32.3																																	
23.7874	43.4	43.3	10.3	53.7	53.6	VB	60	73	6.3	19.4																																	
RADIATED EMISSION																																											
Model Name		SFCS152412			Temp.		25degreeC																																				
Model No.					Humi.		45%																																				
Serial No.					Date		2006/9/1 18:43																																				
Points		2			Test Equip.		R3132,ESPC																																				
Detector		PEAK/QP			Load Line		100mm																																				
Polarization		Vertical			Comment																																						
Power Supply		DC 24V																																									
Limit:		[CISPR 11] Class A Group 1<3m>																																									
							Limit(QP) Horizontal(PEAK) Vertical(PEAK) Vertical(QP)		Testing circuitry 2																																		
<table><tr><th>Frequency [MHz]</th><th>MeterReading (QP) [dBuV]</th><th>Ant. Type</th><th>Antenna Factor [dB/m]</th><th>Cable & Preamp [dB]</th><th>Level(QP) [dBuV/m]</th><th>Angle [°]</th><th>Height [cm]</th><th>Polar.</th><th>Limit [dBuV/m]</th><th>Margin [dB]</th></tr><tr><td>30.291</td><td>57</td><td>BL</td><td>18.1</td><td>-32.3</td><td>42.8</td><td>340</td><td>102</td><td>Vert.</td><td>50</td><td>7.2</td></tr><tr><td>201.083</td><td>65.8</td><td>BL</td><td>8.5</td><td>-31.3</td><td>43</td><td>153</td><td>109</td><td>Vert.</td><td>50</td><td>7</td></tr></table>											Frequency [MHz]	MeterReading (QP) [dBuV]	Ant. Type	Antenna Factor [dB/m]	Cable & Preamp [dB]	Level(QP) [dBuV/m]	Angle [°]	Height [cm]	Polar.	Limit [dBuV/m]	Margin [dB]	30.291	57	BL	18.1	-32.3	42.8	340	102	Vert.	50	7.2	201.083	65.8	BL	8.5	-31.3	43	153	109	Vert.	50	7
Frequency [MHz]	MeterReading (QP) [dBuV]	Ant. Type	Antenna Factor [dB/m]	Cable & Preamp [dB]	Level(QP) [dBuV/m]	Angle [°]	Height [cm]	Polar.	Limit [dBuV/m]	Margin [dB]																																	
30.291	57	BL	18.1	-32.3	42.8	340	102	Vert.	50	7.2																																	
201.083	65.8	BL	8.5	-31.3	43	153	109	Vert.	50	7																																	

DATA SHEET		Date	24-Aug-06
Model	SFCS152412	Temp.	25degreeC
Test	EMI Line conduction & Radiated emission	Humid.	45 %RH
		Tested by	S.Shiina

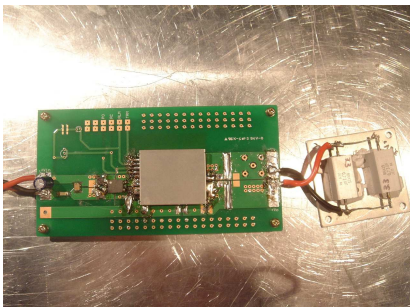
1.Conditions

(1)Photographs of Test Set-Up

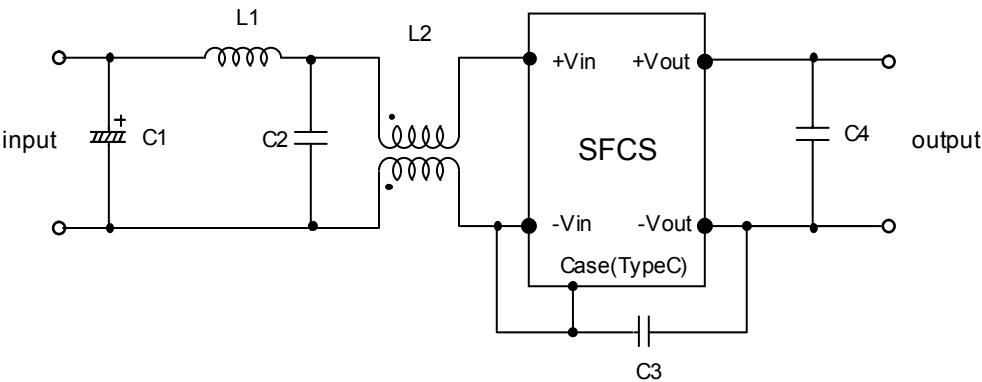
LINE CONDUCTION



Radiated emission



(2)Testing circuitry



- C1 : 47 μ F 50V Electric capacitor

C2 : 1 μ F 100V Ceramic capacitor

C3 : 2200pF 630V Ceramic capacitor

C4 : 0.1 μ F 50V Ceramic capacitor
- L1 : 1 μ H 2.4A Inductor

L2 : ZJYS51R5-2P : TDK

Fig. Testing circuitry2

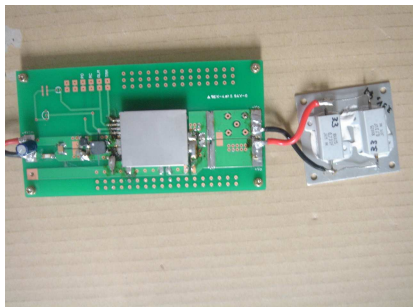
DATA SHEET							Date	08-Sep-06																																														
Model	SFCS152412						Temp.	25degreeC																																														
Test	EMI Line conduction & Radiated emission						Humid.	45 %RH																																														
							Tested by	S.Shiina																																														
LINE CONDUCTION																																																						
Model Name		SFCS152412			Temp.		25degreeC																																															
Model No.					Humi.		45%																																															
Serial No.					Date		2006/9/8 16:35																																															
Points		2			Test Equip.		R3132,ESPC																																															
Detector		PEAK/QP/Ave.			Load Line		100mm																																															
Line Mode		VA/VB			Comment																																																	
Power Supply		DC 24V																																																				
Limit1:		[CISPR Pub11] Class A Gr.1(QP)																																																				
Limit2:		[CISPR Pub11] Class A Gr.1(Ave.)																																																				
							Testing circuitry 1																																															
<table><tr><th>Frequency [MHz]</th><th>Meter Reading (Ave.) [dBuV]</th><th>Meter Reading (QP) [dBuV]</th><th>Factor [dB]</th><th>Level(Ave.) [dBuV]</th><th>Level(QP) [dBuV]</th><th>Line</th><th>Limit(Ave.) [dBuV]</th><th>Limit(QP) [dBuV]</th><th>Margin(Ave.) [dB]</th><th>Margin(QP) [dB]</th></tr><tr><td>17.0193</td><td>37.3</td><td>37.1</td><td>10.2</td><td>47.5</td><td>47.3</td><td>VA</td><td>60</td><td>73</td><td>12.5</td><td>25.7</td></tr><tr><td>0.1685</td><td>35.1</td><td>40.2</td><td>9.8</td><td>44.9</td><td>50</td><td>VB</td><td>66</td><td>79</td><td>21.1</td><td>29</td></tr></table>											Frequency [MHz]	Meter Reading (Ave.) [dBuV]	Meter Reading (QP) [dBuV]	Factor [dB]	Level(Ave.) [dBuV]	Level(QP) [dBuV]	Line	Limit(Ave.) [dBuV]	Limit(QP) [dBuV]	Margin(Ave.) [dB]	Margin(QP) [dB]	17.0193	37.3	37.1	10.2	47.5	47.3	VA	60	73	12.5	25.7	0.1685	35.1	40.2	9.8	44.9	50	VB	66	79	21.1	29											
Frequency [MHz]	Meter Reading (Ave.) [dBuV]	Meter Reading (QP) [dBuV]	Factor [dB]	Level(Ave.) [dBuV]	Level(QP) [dBuV]	Line	Limit(Ave.) [dBuV]	Limit(QP) [dBuV]	Margin(Ave.) [dB]	Margin(QP) [dB]																																												
17.0193	37.3	37.1	10.2	47.5	47.3	VA	60	73	12.5	25.7																																												
0.1685	35.1	40.2	9.8	44.9	50	VB	66	79	21.1	29																																												
RADIATED EMISSION																																																						
Model Name		SFCS152412			Temp.		25degreeC																																															
Model No.					Humi.		45%																																															
Serial No.					Date		2006/9/8 16:13																																															
Points		3			Test Equip.		R3132,ESPC																																															
Detector		PEAK/QP			Load Line		100mm																																															
Polarization		Vertical			Comment																																																	
Power Supply		DC 24V																																																				
Limit:		[CISPR 11] Class A Group 1<3m>																																																				
							Testing circuitry 1																																															
<table><tr><th>Frequency [MHz]</th><th>MeterReading (QP) [dBuV]</th><th>Ant. Type</th><th>Antenna Factor [dB/m]</th><th>Cable & Preamp [dB]</th><th>Level(QP) [dBuV/m]</th><th>Angle [°]</th><th>Height [cm]</th><th>Polar.</th><th>Limit [dBuV/m]</th><th>Margin [dB]</th></tr><tr><td>34.691</td><td>47</td><td>BL</td><td>15.9</td><td>-32.2</td><td>30.7</td><td>79</td><td>106</td><td>Vert.</td><td>50</td><td>19.3</td></tr><tr><td>206.037</td><td>64.4</td><td>BL</td><td>8.6</td><td>-31.3</td><td>41.7</td><td>168</td><td>110</td><td>Vert.</td><td>50</td><td>8.3</td></tr><tr><td>335.996</td><td>62.5</td><td>BL</td><td>14</td><td>-30.8</td><td>45.7</td><td>101</td><td>104</td><td>Vert.</td><td>57</td><td>11.3</td></tr></table>											Frequency [MHz]	MeterReading (QP) [dBuV]	Ant. Type	Antenna Factor [dB/m]	Cable & Preamp [dB]	Level(QP) [dBuV/m]	Angle [°]	Height [cm]	Polar.	Limit [dBuV/m]	Margin [dB]	34.691	47	BL	15.9	-32.2	30.7	79	106	Vert.	50	19.3	206.037	64.4	BL	8.6	-31.3	41.7	168	110	Vert.	50	8.3	335.996	62.5	BL	14	-30.8	45.7	101	104	Vert.	57	11.3
Frequency [MHz]	MeterReading (QP) [dBuV]	Ant. Type	Antenna Factor [dB/m]	Cable & Preamp [dB]	Level(QP) [dBuV/m]	Angle [°]	Height [cm]	Polar.	Limit [dBuV/m]	Margin [dB]																																												
34.691	47	BL	15.9	-32.2	30.7	79	106	Vert.	50	19.3																																												
206.037	64.4	BL	8.6	-31.3	41.7	168	110	Vert.	50	8.3																																												
335.996	62.5	BL	14	-30.8	45.7	101	104	Vert.	57	11.3																																												

DATA SHEET		Date	08-Sep-06
Model	SFCS152412	Temp.	25degreeC
Test	EMI Line conduction & Radiated emission	Humid.	45 %RH
		Tested by	S.Shiina

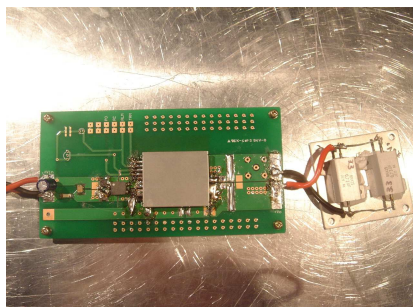
1.Conditions

(1)Photographs of Test Set-Up

LINE CONDUCTION



Radiated emission



(2)Testing circuitry

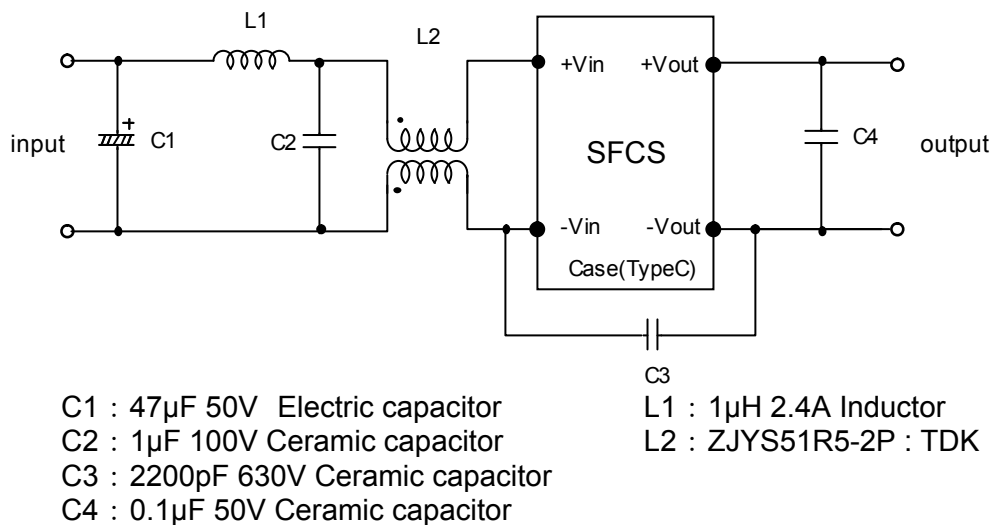
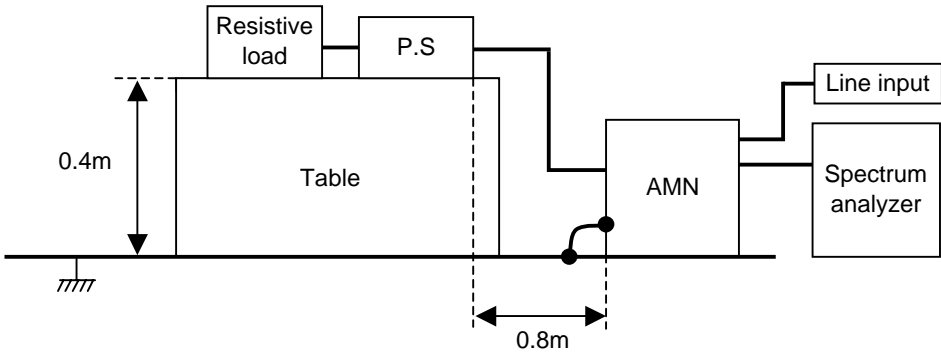


Fig. Testing circuitry1

DATA SHEET		Date	24-Aug-06
Model	Circuit used for measurement	Temp.	25 degreeC
Test	EMI Line conduction & Radiated emission	Humid.	45 %RH
		Tested by	S.Shiina

1. Line conduction



2. Radiated emission

