

DATA SHEET							Date	24-Aug-06	
Model	SFCS152415						Temp.	25degreeC	
Test	EMI Line conduction & Radiated emission						Humid.	45 %RH	
							Tested by	S.Shiina	

LINE CONDUCTION

Model Name : SFCS152415 Temp. : 25degreeC
 Model No. : Humi. : 45%
 Serial No. : Date : 2006/8/24 16:28
 Points : 2 Test Equip. : R3132,ESPC
 Detector : PEAK/QP/Ave. Load Line : 100mm
 Line Mode : VA/VB Comment :
 Power Supply : DC 24V
 Limit1: [CISPR Pub11] Class A Gr.1(QP)
 Limit2: [CISPR Pub11] Class A Gr.1(Ave.)

Testing circuitry 2

Frequency [MHz]	Meter Reading (Ave.) [dBuV]	Meter Reading (QP) [dBuV]	Factor [dB]	Level(Ave.) [dBuV]	Level(QP) [dBuV]	Line	Limit(Ave.) [dBuV]	Limit(QP) [dBuV]	Margin(Ave.) [dB]	Margin(QP) [dB]
0.6248	31	30.8	9.9	40.9	40.7	VA	60	73	19.1	32.3
23.7874	43.4	43.3	10.3	53.7	53.6	VB	60	73	6.3	19.4

RADIATED EMISSION

Model Name : SFCS152415 Temp. : 25degreeC
 Model No. : Humi. : 45%
 Serial No. : Date : 2006/8/24 17:15
 Points : 2 Test Equip. : R3132,ESPC
 Detector : PEAK/QP Load Line : 100mm
 Polarization : Vertical Comment :
 Power Supply : DC 24V
 Limit: [CISPR 11] Class A Group 1<3m>

Testing circuitry 2

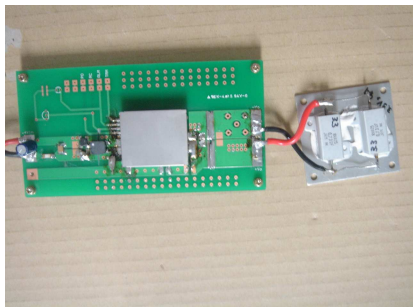
Frequency [MHz]	MeterReading (QP) [dBuV]	Ant. Type	Antenna Factor [dB/m]	Cable & Preamp [dB]	Level(QP) [dBuV/m]	Angle [°]	Height [cm]	Polar.	Limit [dBuV/m]	Margin [dB]
30.023	56.4	BL	18.2	-32.3	42.3	60	101	Vert.	50	7.7

DATA SHEET		Date	24-Aug-06
Model	SFCS152415	Temp.	25degreeC
Test	EMI Line conduction & Radiated emission	Humid.	45 %RH
		Tested by	S.Shiina

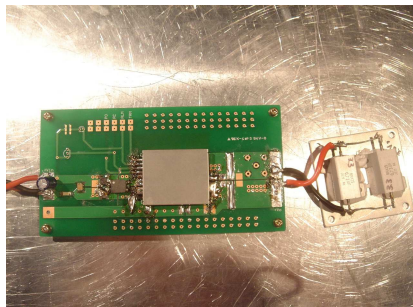
1.Conditions

(1)Photographs of Test Set-Up

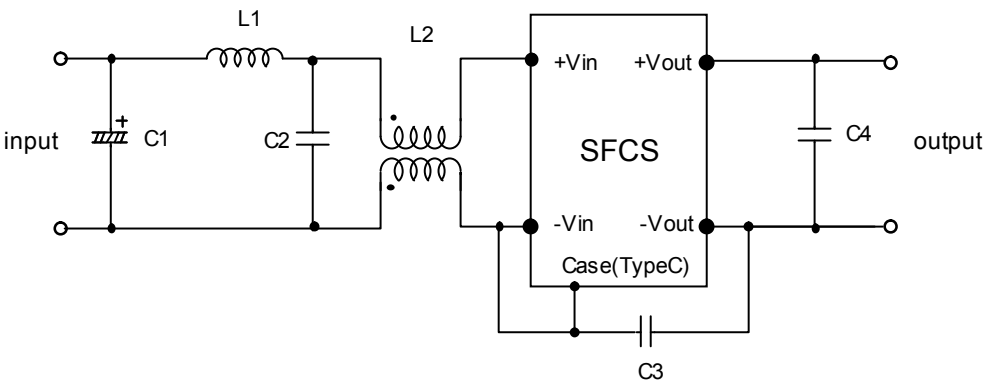
LINE CONDUCTION



Radiated emission



(2)Testing circuitry



- C1 : 47 μ F 50V Electric capacitor

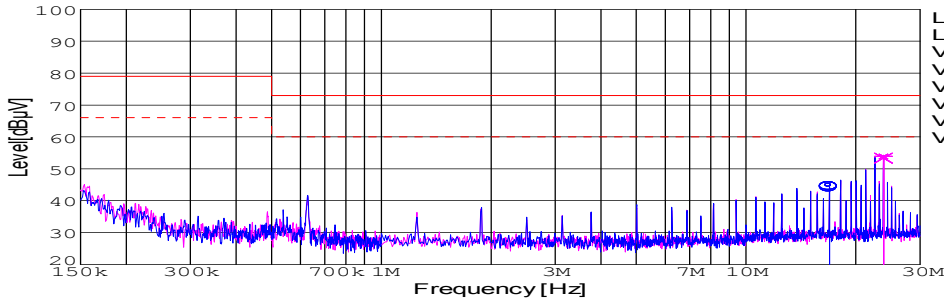
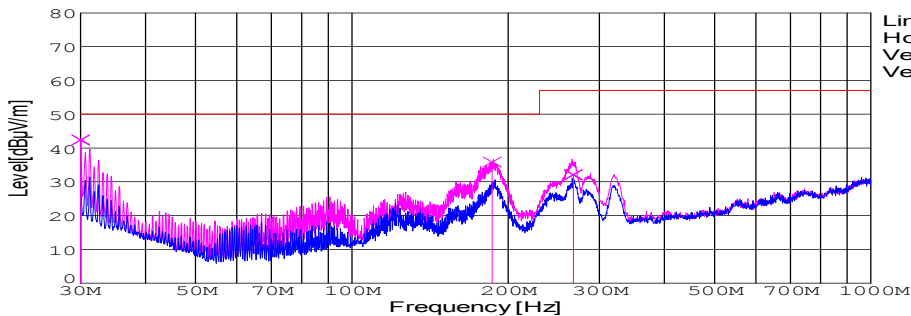
C2 : 1 μ F 100V Ceramic capacitor

C3 : 2200pF 630V Ceramic capacitor

C4 : 0.1 μ F 50V Ceramic capacitor
- L1 : 1 μ H 2.4A Inductor

L2 : ZJYS51R5-2P : TDK

Fig. Testing circuitry2

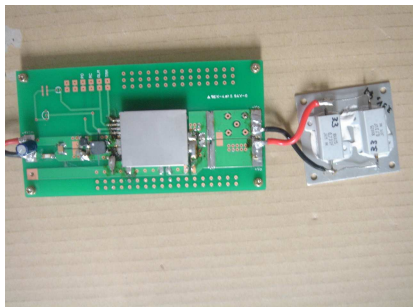
DATA SHEET							Date	24-Aug-06																																														
Model	SFCS152415						Temp.	25degreeC																																														
Test	EMI Line conduction & Radiated emission						Humid.	45 %RH																																														
							Tested by	S.Shiina																																														
LINE CONDUCTION																																																						
Model Name		SFCS152415			Temp.		25degreeC																																															
Model No.					Humi.		45%																																															
Serial No.					Date		2006/8/24 15:52																																															
Points		2			Test Equip.		R3132,ESPC																																															
Detector		PEAK/QP/Ave.			Load Line		100mm																																															
Line Mode		VA/VB			Comment																																																	
Power Supply		DC 24V																																																				
Limit1:		[CISPR Pub11] Class A Gr.1(QP)																																																				
Limit2:		[CISPR Pub11] Class A Gr.1(Ave.)																																																				
							Limit1(QP)		—																																													
							Limit2(Ave.)		- - -																																													
							VA(PEAK)		—																																													
							VB(PEAK)		—																																													
							VA(QP)		○																																													
							VA(Ave.)		●																																													
							VB(QP)		×																																													
							VB(Ave.)		×																																													
							Testing circuitry 1																																															
<table><tr><th>Frequency [MHz]</th><th>Meter Reading (Ave.) [dBuV]</th><th>Meter Reading (QP) [dBuV]</th><th>Factor [dB]</th><th>Level(Ave.) [dBuV]</th><th>Level(QP) [dBuV]</th><th>Line</th><th>Limit(Ave.) [dBuV]</th><th>Limit(QP) [dBuV]</th><th>Margin(Ave.) [dB]</th><th>Margin(QP) [dB]</th></tr><tr><td>16.9089</td><td>34.5</td><td>34</td><td>10.2</td><td>44.7</td><td>44.2</td><td>VA</td><td>60</td><td>73</td><td>15.3</td><td>28.8</td></tr><tr><td>23.7984</td><td>43.5</td><td>43.1</td><td>10.3</td><td>53.8</td><td>53.4</td><td>VB</td><td>60</td><td>73</td><td>6.2</td><td>19.6</td></tr></table>											Frequency [MHz]	Meter Reading (Ave.) [dBuV]	Meter Reading (QP) [dBuV]	Factor [dB]	Level(Ave.) [dBuV]	Level(QP) [dBuV]	Line	Limit(Ave.) [dBuV]	Limit(QP) [dBuV]	Margin(Ave.) [dB]	Margin(QP) [dB]	16.9089	34.5	34	10.2	44.7	44.2	VA	60	73	15.3	28.8	23.7984	43.5	43.1	10.3	53.8	53.4	VB	60	73	6.2	19.6											
Frequency [MHz]	Meter Reading (Ave.) [dBuV]	Meter Reading (QP) [dBuV]	Factor [dB]	Level(Ave.) [dBuV]	Level(QP) [dBuV]	Line	Limit(Ave.) [dBuV]	Limit(QP) [dBuV]	Margin(Ave.) [dB]	Margin(QP) [dB]																																												
16.9089	34.5	34	10.2	44.7	44.2	VA	60	73	15.3	28.8																																												
23.7984	43.5	43.1	10.3	53.8	53.4	VB	60	73	6.2	19.6																																												
RADIATED EMISSION																																																						
Model Name		SFCS152415			Temp.		25degreeC																																															
Model No.					Humi.		45%																																															
Serial No.					Date		2006/8/24 16:05																																															
Points		3			Test Equip.		R3132,ESPC																																															
Detector		PEAK/QP			Load Line		100mm																																															
Polarization		Vertical			Comment																																																	
Power Supply		DC 24V																																																				
Limit:		[CISPR 11] Class A Group 1<3m>																																																				
							Limit(QP)		—																																													
							Horizontal(PEAK)		—																																													
							Vertical(PEAK)		—																																													
							Vertical(QP)		×																																													
							Testing circuitry 1																																															
<table><tr><th>Frequency [MHz]</th><th>MeterReading (QP) [dBuV]</th><th>Ant. Type</th><th>Antenna Factor [dB/m]</th><th>Cable & Preamp [dB]</th><th>Level(QP) [dBuV/m]</th><th>Angle [°]</th><th>Height [cm]</th><th>Polar.</th><th>Limit [dBuV/m]</th><th>Margin [dB]</th></tr><tr><td>30.028</td><td>56.5</td><td>BL</td><td>18.2</td><td>-32.3</td><td>42.4</td><td>238</td><td>159</td><td>Vert.</td><td>50</td><td>7.6</td></tr><tr><td>186.397</td><td>58.8</td><td>BL</td><td>8.3</td><td>-31.3</td><td>35.8</td><td>151</td><td>108</td><td>Vert.</td><td>50</td><td>14.2</td></tr><tr><td>267.082</td><td>50.3</td><td>BL</td><td>12.9</td><td>-31.1</td><td>32.1</td><td>146</td><td>113</td><td>Vert.</td><td>57</td><td>24.9</td></tr></table>											Frequency [MHz]	MeterReading (QP) [dBuV]	Ant. Type	Antenna Factor [dB/m]	Cable & Preamp [dB]	Level(QP) [dBuV/m]	Angle [°]	Height [cm]	Polar.	Limit [dBuV/m]	Margin [dB]	30.028	56.5	BL	18.2	-32.3	42.4	238	159	Vert.	50	7.6	186.397	58.8	BL	8.3	-31.3	35.8	151	108	Vert.	50	14.2	267.082	50.3	BL	12.9	-31.1	32.1	146	113	Vert.	57	24.9
Frequency [MHz]	MeterReading (QP) [dBuV]	Ant. Type	Antenna Factor [dB/m]	Cable & Preamp [dB]	Level(QP) [dBuV/m]	Angle [°]	Height [cm]	Polar.	Limit [dBuV/m]	Margin [dB]																																												
30.028	56.5	BL	18.2	-32.3	42.4	238	159	Vert.	50	7.6																																												
186.397	58.8	BL	8.3	-31.3	35.8	151	108	Vert.	50	14.2																																												
267.082	50.3	BL	12.9	-31.1	32.1	146	113	Vert.	57	24.9																																												

DATA SHEET		Date	24-Aug-06
Model	SFCS152415	Temp.	25degreeC
Test	EMI Line conduction & Radiated emission	Humid.	45 %RH
		Tested by	S.Shiina

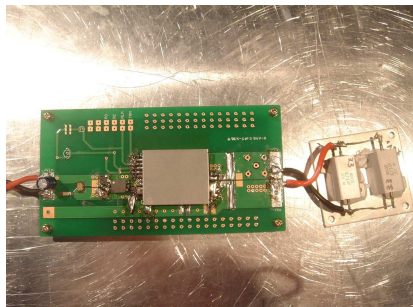
1.Conditions

(1)Photographs of Test Set-Up

LINE CONDUCTION



Radiated emission



(2)Testing circuitry

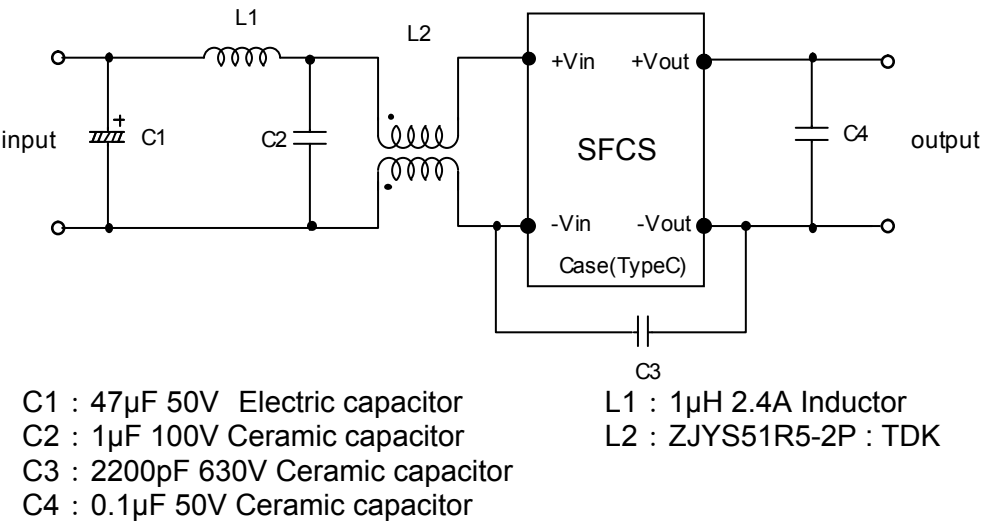
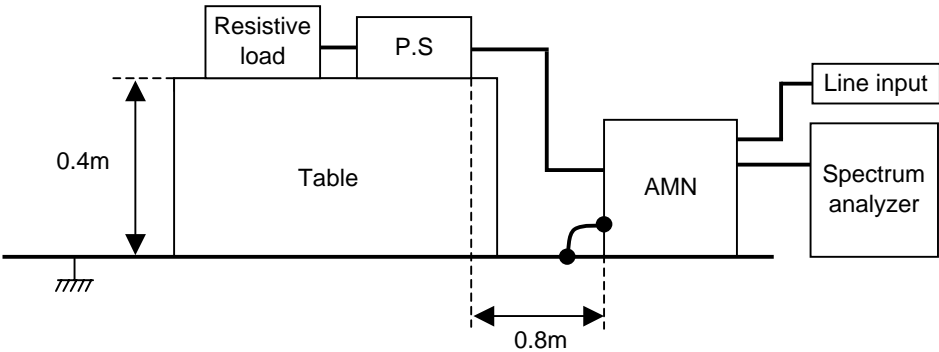


Fig. Testing circuitry1

DATA SHEET		Date	24-Aug-06
Model	Circuit used for measurement	Temp.	25 degreeC
Test	EMI Line conduction & Radiated emission	Humid.	45 %RH
		Tested by	S.Shiina

1. Line conduction



2. Radiated emission

