

DATA SHEET							Date	08-Sep-06																																			
Model	SFCS154812						Temp.	25degreeC																																			
Test	EMI Line conduction & Radiated emission						Humid.	45 %RH																																			
							Tested by	S.Shiina																																			
LINE CONDUCTION																																											
Model Name		SFCS154812			Temp.		25degreeC																																				
Model No.					Humi.		45%																																				
Serial No.					Date		2006/9/8 19:41																																				
Points		2			Test Equip.		R3132,ESPC																																				
Detector		PEAK/QP/Ave.			Load Line		100mm																																				
Line Mode		VA			Comment																																						
Power Supply		DC 48V																																									
Limit1:		[CISPR Pub11] Class A Gr.1(QP)																																									
Limit2:		[CISPR Pub11] Class A Gr.1(Ave.)																																									
							Limit1(QP)		—																																		
							Limit2(Ave.)		- - -																																		
							VA(PEAK)		—																																		
							VB(PEAK)		—																																		
							VA(QP)		○																																		
							VA(Ave.)		●																																		
							Testing circuitry 2																																				
<table><tr><th>Frequency [MHz]</th><th>Meter Reading (Ave.) [dBuV]</th><th>Meter Reading (QP) [dBuV]</th><th>Factor [dB]</th><th>Level(Ave.) [dBuV]</th><th>Level(QP) [dBuV]</th><th>Line</th><th>Limit(Ave.) [dBuV]</th><th>Limit(QP) [dBuV]</th><th>Margin(Ave.) [dB]</th><th>Margin(QP) [dB]</th></tr><tr><td>0.625</td><td>30.7</td><td>31.1</td><td>9.9</td><td>40.6</td><td>41</td><td>VA</td><td>60</td><td>73</td><td>19.4</td><td>32</td></tr><tr><td>17.4889</td><td>34.8</td><td>34.5</td><td>10.2</td><td>45</td><td>44.7</td><td>VA</td><td>60</td><td>73</td><td>15</td><td>28.3</td></tr></table>											Frequency [MHz]	Meter Reading (Ave.) [dBuV]	Meter Reading (QP) [dBuV]	Factor [dB]	Level(Ave.) [dBuV]	Level(QP) [dBuV]	Line	Limit(Ave.) [dBuV]	Limit(QP) [dBuV]	Margin(Ave.) [dB]	Margin(QP) [dB]	0.625	30.7	31.1	9.9	40.6	41	VA	60	73	19.4	32	17.4889	34.8	34.5	10.2	45	44.7	VA	60	73	15	28.3
Frequency [MHz]	Meter Reading (Ave.) [dBuV]	Meter Reading (QP) [dBuV]	Factor [dB]	Level(Ave.) [dBuV]	Level(QP) [dBuV]	Line	Limit(Ave.) [dBuV]	Limit(QP) [dBuV]	Margin(Ave.) [dB]	Margin(QP) [dB]																																	
0.625	30.7	31.1	9.9	40.6	41	VA	60	73	19.4	32																																	
17.4889	34.8	34.5	10.2	45	44.7	VA	60	73	15	28.3																																	

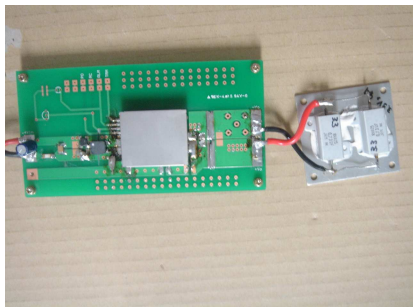
RADIATED EMISSION																																																						
Model Name		SFCS154812			Temp.		25degreeC																																															
Model No.					Humi.		45%																																															
Serial No.					Date		2006/9/8 19:54																																															
Points		3			Test Equip.		R3132,ESPC																																															
Detector		PEAK/QP			Load Line		100mm																																															
Polarization		Vertical			Comment																																																	
Power Supply		DC 48V																																																				
Limit:		[CISPR 11] Class A Group 1<3m>																																																				
							Limit(QP)		—																																													
							Horizontal(PEAK)		—																																													
							Vertical(PEAK)		—																																													
							Vertical(QP)		x																																													
							Testing circuitry 2																																															
<table><tr><th>Frequency [MHz]</th><th>MeterReading (QP) [dBuV]</th><th>Ant. Type</th><th>Antenna Factor [dB/m]</th><th>Cable & Preamp [dB]</th><th>Level(QP) [dBuV/m]</th><th>Angle [°]</th><th>Height [cm]</th><th>Polar.</th><th>Limit [dBuV/m]</th><th>Margin [dB]</th></tr><tr><td>327.362</td><td>61.2</td><td>BL</td><td>13.8</td><td>-30.9</td><td>44.1</td><td>137</td><td>101</td><td>Vert.</td><td>57</td><td>12.9</td></tr><tr><td>206.457</td><td>55.5</td><td>BL</td><td>8.6</td><td>-31.3</td><td>32.8</td><td>65</td><td>106</td><td>Vert.</td><td>50</td><td>17.2</td></tr><tr><td>159.033</td><td>53.5</td><td>BL</td><td>10</td><td>-31.5</td><td>32</td><td>145</td><td>150</td><td>Vert.</td><td>50</td><td>18</td></tr></table>											Frequency [MHz]	MeterReading (QP) [dBuV]	Ant. Type	Antenna Factor [dB/m]	Cable & Preamp [dB]	Level(QP) [dBuV/m]	Angle [°]	Height [cm]	Polar.	Limit [dBuV/m]	Margin [dB]	327.362	61.2	BL	13.8	-30.9	44.1	137	101	Vert.	57	12.9	206.457	55.5	BL	8.6	-31.3	32.8	65	106	Vert.	50	17.2	159.033	53.5	BL	10	-31.5	32	145	150	Vert.	50	18
Frequency [MHz]	MeterReading (QP) [dBuV]	Ant. Type	Antenna Factor [dB/m]	Cable & Preamp [dB]	Level(QP) [dBuV/m]	Angle [°]	Height [cm]	Polar.	Limit [dBuV/m]	Margin [dB]																																												
327.362	61.2	BL	13.8	-30.9	44.1	137	101	Vert.	57	12.9																																												
206.457	55.5	BL	8.6	-31.3	32.8	65	106	Vert.	50	17.2																																												
159.033	53.5	BL	10	-31.5	32	145	150	Vert.	50	18																																												

DATA SHEET		Date	08-Sep-06
Model	SFCS154812	Temp.	25degreeC
Test	EMI Line conduction & Radiated emission	Humid.	45 %RH
		Tested by	S.Shiina

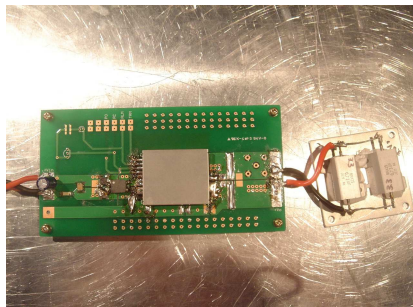
1.Conditions

(1)Photographs of Test Set-Up

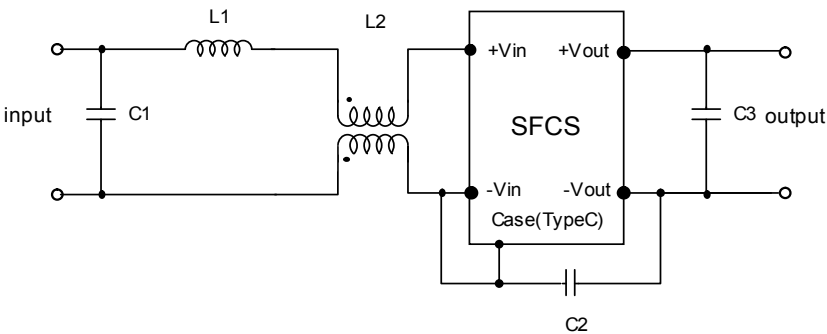
LINE CONDUCTION



Radiated emission



(2)Testing circuitry



C1: 1 μ F 100V Ceramic capacitor
C2: 2200pF 630V Ceramic capacitor
C3 : 0.1 μ F 50V Ceramic capacitor

L1 : 1 μ H 2.4A Inductor
L2 : ZJYS51R5-2P : TDK

Fig. Testing circuitry2

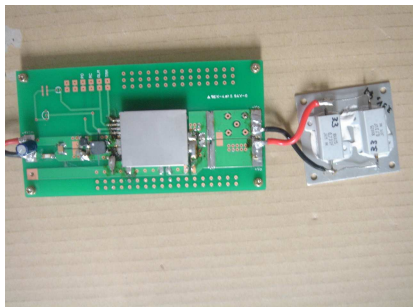
DATA SHEET							Date	08-Sep-06																																														
Model	SFCS154812						Temp.	25degreeC																																														
Test	EMI Line conduction & Radiated emission						Humid.	45 %RH																																														
							Tested by	S.Shiina																																														
LINE CONDUCTION																																																						
Model Name			SFCS154812		Temp.		25degreeC																																															
Model No.					Humi.		45%																																															
Serial No.					Date		2006/9/8 19:14																																															
Points			2		Test Equip.		R3132,ESPC																																															
Detector			PEAK/QP/Ave.		Load Line		100mm																																															
Line Mode			VA		Comment																																																	
Power Supply			DC 48V																																																			
Limit1:			[CISPR Pub11] Class A Gr.1(QP)																																																			
Limit2:			[CISPR Pub11] Class A Gr.1(Ave.)																																																			
							Testing circuitry 1																																															
<table><tr><th>Frequency [MHz]</th><th>Meter Reading (Ave.) [dBuV]</th><th>Meter Reading (QP) [dBuV]</th><th>Factor [dB]</th><th>Level(Ave.) [dBuV]</th><th>Level(QP) [dBuV]</th><th>Line</th><th>Limit(Ave.) [dBuV]</th><th>Limit(QP) [dBuV]</th><th>Margin(Ave.) [dB]</th><th>Margin(QP) [dB]</th></tr><tr><td>0.626</td><td>32.4</td><td>32.7</td><td>9.9</td><td>42.3</td><td>42.6</td><td>VA</td><td>60</td><td>73</td><td>17.7</td><td>30.4</td></tr><tr><td>16.8778</td><td>34.7</td><td>34.3</td><td>10.2</td><td>44.9</td><td>44.5</td><td>VA</td><td>60</td><td>73</td><td>15.1</td><td>28.5</td></tr></table>											Frequency [MHz]	Meter Reading (Ave.) [dBuV]	Meter Reading (QP) [dBuV]	Factor [dB]	Level(Ave.) [dBuV]	Level(QP) [dBuV]	Line	Limit(Ave.) [dBuV]	Limit(QP) [dBuV]	Margin(Ave.) [dB]	Margin(QP) [dB]	0.626	32.4	32.7	9.9	42.3	42.6	VA	60	73	17.7	30.4	16.8778	34.7	34.3	10.2	44.9	44.5	VA	60	73	15.1	28.5											
Frequency [MHz]	Meter Reading (Ave.) [dBuV]	Meter Reading (QP) [dBuV]	Factor [dB]	Level(Ave.) [dBuV]	Level(QP) [dBuV]	Line	Limit(Ave.) [dBuV]	Limit(QP) [dBuV]	Margin(Ave.) [dB]	Margin(QP) [dB]																																												
0.626	32.4	32.7	9.9	42.3	42.6	VA	60	73	17.7	30.4																																												
16.8778	34.7	34.3	10.2	44.9	44.5	VA	60	73	15.1	28.5																																												
RADIATED EMISSION																																																						
Model Name			SFCS154812		Temp.		25degreeC																																															
Model No.					Humi.		45%																																															
Serial No.					Date		2006/9/8 19:27																																															
Points			3		Test Equip.		R3132,ESPC																																															
Detector			PEAK/QP		Load Line		100mm																																															
Polarization			Vertical		Comment																																																	
Power Supply			DC 48V																																																			
Limit:			[CISPR 11] Class A Group 1<3m>																																																			
							Testing circuitry 1																																															
<table><tr><th>Frequency [MHz]</th><th>MeterReading (QP) [dBuV]</th><th>Ant. Type</th><th>Antenna Factor [dB/m]</th><th>Cable & Preamp [dB]</th><th>Level(QP) [dBuV/m]</th><th>Angle [°]</th><th>Height [cm]</th><th>Polar.</th><th>Limit [dBuV/m]</th><th>Margin [dB]</th></tr><tr><td>162.338</td><td>52.9</td><td>BL</td><td>9.7</td><td>-31.5</td><td>31.1</td><td>6</td><td>154</td><td>Vert.</td><td>50</td><td>18.9</td></tr><tr><td>206.694</td><td>56.2</td><td>BL</td><td>8.6</td><td>-31.3</td><td>33.5</td><td>101</td><td>119</td><td>Vert.</td><td>50</td><td>16.5</td></tr><tr><td>314.694</td><td>61.4</td><td>BL</td><td>13.4</td><td>-30.9</td><td>43.9</td><td>140</td><td>110</td><td>Vert.</td><td>57</td><td>13.1</td></tr></table>											Frequency [MHz]	MeterReading (QP) [dBuV]	Ant. Type	Antenna Factor [dB/m]	Cable & Preamp [dB]	Level(QP) [dBuV/m]	Angle [°]	Height [cm]	Polar.	Limit [dBuV/m]	Margin [dB]	162.338	52.9	BL	9.7	-31.5	31.1	6	154	Vert.	50	18.9	206.694	56.2	BL	8.6	-31.3	33.5	101	119	Vert.	50	16.5	314.694	61.4	BL	13.4	-30.9	43.9	140	110	Vert.	57	13.1
Frequency [MHz]	MeterReading (QP) [dBuV]	Ant. Type	Antenna Factor [dB/m]	Cable & Preamp [dB]	Level(QP) [dBuV/m]	Angle [°]	Height [cm]	Polar.	Limit [dBuV/m]	Margin [dB]																																												
162.338	52.9	BL	9.7	-31.5	31.1	6	154	Vert.	50	18.9																																												
206.694	56.2	BL	8.6	-31.3	33.5	101	119	Vert.	50	16.5																																												
314.694	61.4	BL	13.4	-30.9	43.9	140	110	Vert.	57	13.1																																												

DATA SHEET		Date	08-Sep-06
Model	SFCS154812	Temp.	25degreeC
Test	EMI Line conduction & Radiated emission	Humid.	45 %RH
		Tested by	S.Shiina

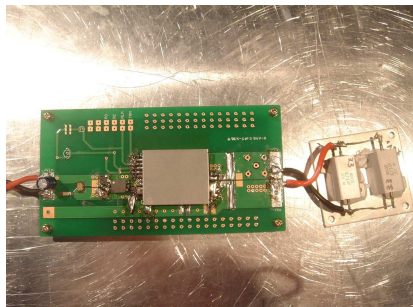
1.Conditions

(1)Photographs of Test Set-Up

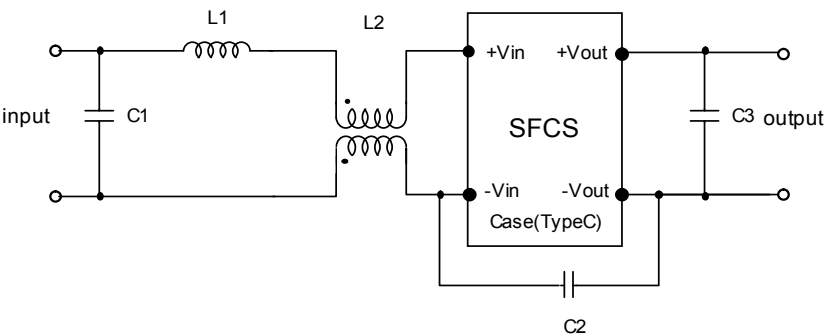
LINE CONDUCTION



Radiated emission



(2)Testing circuitry



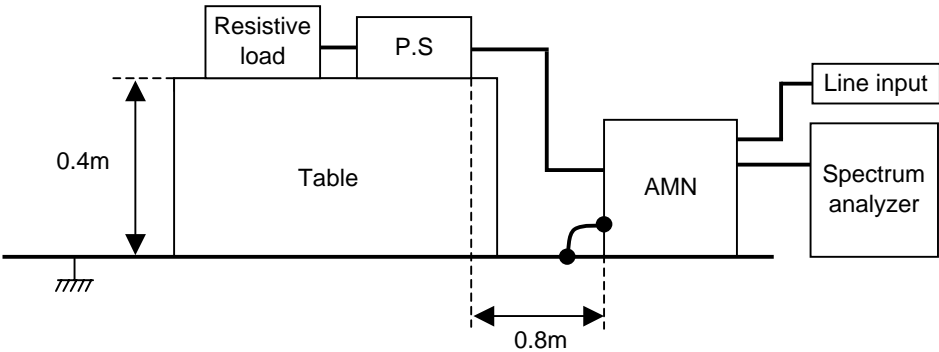
C1 : 1 μ F 100V Ceramic capacitor
C2 : 2200pF 630V Ceramic capacitor
C3 : 0.1 μ F 50V Ceramic capacitor

L1 : 1 μ H 2.4A Inductor
L2 : ZJYS51R5-2P : TDK

Fig. Testing circuitry1

DATA SHEET		Date	08-Sep-06
Model	Circuit used for measurement	Temp.	25 degreeC
Test	EMI Line conduction & Radiated emission	Humid.	45 %RH
		Tested by	S.Shiina

1. Line conduction



2. Radiated emission

