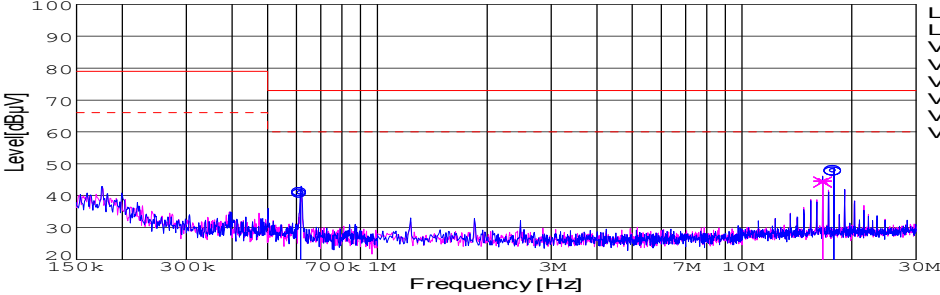
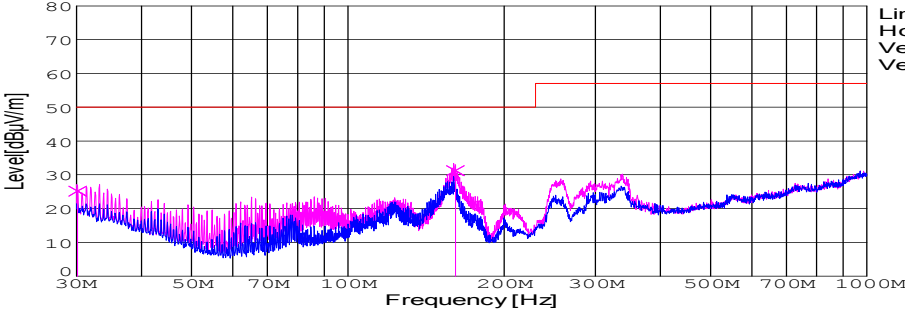


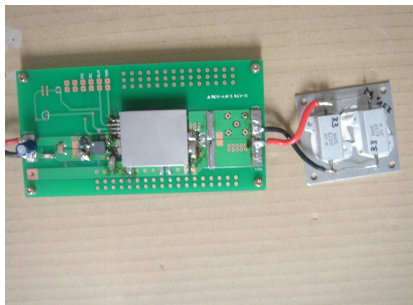
DATA SHEET							Date	07-Sep-06																																														
Model	SFCS154815						Temp.	25degreeC																																														
Test	EMI Line conduction & Radiated emission						Humid.	45 %RH																																														
							Tested by	S.Shiina																																														
LINE CONDUCTION																																																						
Model Name		SFCS154815			Temp.		25degreeC																																															
Model No.					Humi.		45%																																															
Serial No.					Date		2006/9/7 16:05																																															
Points		3			Test Equip.		R3132,ESPC																																															
Detector		PEAK/QP/Ave.			Load Line		100mm																																															
Line Mode		VA/VB			Comment																																																	
Power Supply		DC 48V																																																				
Limit1:		[CISPR Pub11] Class A Gr.1(QP)																																																				
Limit2:		[CISPR Pub11] Class A Gr.1(Ave.)																																																				
							Limit1(QP) Limit2(Ave.) VA(PEAK) VB(PEAK) VA(QP) VA(Ave.) VB(QP) VB(Ave.)		Testing circuitry 2																																													
<table><tr><th>Frequency [MHz]</th><th>Meter Reading (Ave.) [dBuV]</th><th>Meter Reading (QP) [dBuV]</th><th>Factor [dB]</th><th>Level(Ave.) [dBuV]</th><th>Level(QP) [dBuV]</th><th>Line</th><th>Limit(Ave.) [dBuV]</th><th>Limit(QP) [dBuV]</th><th>Margin(Ave.) [dB]</th><th>Margin(QP) [dB]</th></tr><tr><td>0.6156</td><td>30.7</td><td>31.3</td><td>9.9</td><td>40.6</td><td>41.2</td><td>VA</td><td>60</td><td>73</td><td>19.4</td><td>31.8</td></tr><tr><td>17.8589</td><td>37.6</td><td>37.2</td><td>10.2</td><td>47.8</td><td>47.4</td><td>VA</td><td>60</td><td>73</td><td>12.2</td><td>25.6</td></tr><tr><td>16.6278</td><td>34.4</td><td>34.1</td><td>10.2</td><td>44.6</td><td>44.3</td><td>VB</td><td>60</td><td>73</td><td>15.4</td><td>28.7</td></tr></table>											Frequency [MHz]	Meter Reading (Ave.) [dBuV]	Meter Reading (QP) [dBuV]	Factor [dB]	Level(Ave.) [dBuV]	Level(QP) [dBuV]	Line	Limit(Ave.) [dBuV]	Limit(QP) [dBuV]	Margin(Ave.) [dB]	Margin(QP) [dB]	0.6156	30.7	31.3	9.9	40.6	41.2	VA	60	73	19.4	31.8	17.8589	37.6	37.2	10.2	47.8	47.4	VA	60	73	12.2	25.6	16.6278	34.4	34.1	10.2	44.6	44.3	VB	60	73	15.4	28.7
Frequency [MHz]	Meter Reading (Ave.) [dBuV]	Meter Reading (QP) [dBuV]	Factor [dB]	Level(Ave.) [dBuV]	Level(QP) [dBuV]	Line	Limit(Ave.) [dBuV]	Limit(QP) [dBuV]	Margin(Ave.) [dB]	Margin(QP) [dB]																																												
0.6156	30.7	31.3	9.9	40.6	41.2	VA	60	73	19.4	31.8																																												
17.8589	37.6	37.2	10.2	47.8	47.4	VA	60	73	12.2	25.6																																												
16.6278	34.4	34.1	10.2	44.6	44.3	VB	60	73	15.4	28.7																																												
RADIATED EMISSION																																																						
Model Name		SFCS154815			Temp.		25degreeC																																															
Model No.					Humi.		45%																																															
Serial No.					Date		2006/9/8 20:41																																															
Points		2			Test Equip.		R3132,ESPC																																															
Detector		PEAK/QP			Load Line		100mm																																															
Polarization		Vertical			Comment																																																	
Power Supply		DC 48V																																																				
Limit:		[CISPR 11] Class A Group 1<3m>																																																				
							Limit(QP) Horizontal(PEAK) Vertical(PEAK) Vertical(QP)		Testing circuitry 2																																													
<table><tr><th>Frequency [MHz]</th><th>MeterReading (QP) [dBuV]</th><th>Ant. Type</th><th>Antenna Factor [dB/m]</th><th>Cable &amp; Preamp [dB]</th><th>Level(QP) [dBuV/m]</th><th>Angle [°]</th><th>Height [cm]</th><th>Polar.</th><th>Limit [dBuV/m]</th><th>Margin [dB]</th></tr><tr><td>30.153</td><td>39.4</td><td>BL</td><td>18.1</td><td>-32.3</td><td>25.2</td><td>95</td><td>105</td><td>Vert.</td><td>50</td><td>24.8</td></tr><tr><td>161.151</td><td>52.9</td><td>BL</td><td>9.8</td><td>-31.5</td><td>31.2</td><td>6</td><td>141</td><td>Vert.</td><td>50</td><td>18.8</td></tr></table>											Frequency [MHz]	MeterReading (QP) [dBuV]	Ant. Type	Antenna Factor [dB/m]	Cable & Preamp [dB]	Level(QP) [dBuV/m]	Angle [°]	Height [cm]	Polar.	Limit [dBuV/m]	Margin [dB]	30.153	39.4	BL	18.1	-32.3	25.2	95	105	Vert.	50	24.8	161.151	52.9	BL	9.8	-31.5	31.2	6	141	Vert.	50	18.8											
Frequency [MHz]	MeterReading (QP) [dBuV]	Ant. Type	Antenna Factor [dB/m]	Cable & Preamp [dB]	Level(QP) [dBuV/m]	Angle [°]	Height [cm]	Polar.	Limit [dBuV/m]	Margin [dB]																																												
30.153	39.4	BL	18.1	-32.3	25.2	95	105	Vert.	50	24.8																																												
161.151	52.9	BL	9.8	-31.5	31.2	6	141	Vert.	50	18.8																																												

DATA SHEET		Date	07-Sep-06
Model	SFCS154815	Temp.	25degreeC
Test	EMI Line conduction & Radiated emission	Humid.	45 %RH
		Tested by	S.Shiina

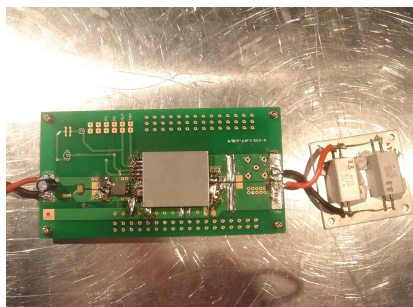
1.Conditions

(1)Photographs of Test Set-Up

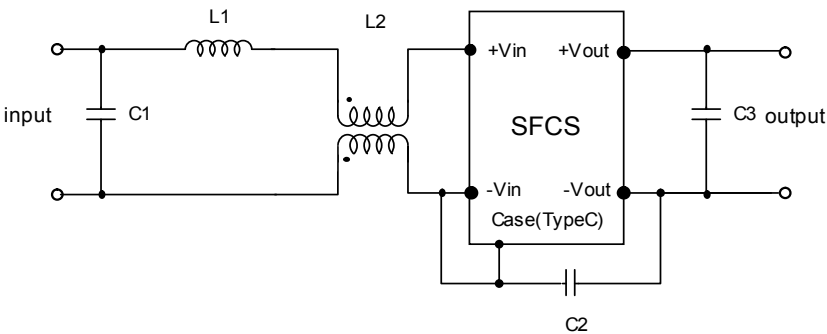
LINE CONDUCTION



Radiated emission



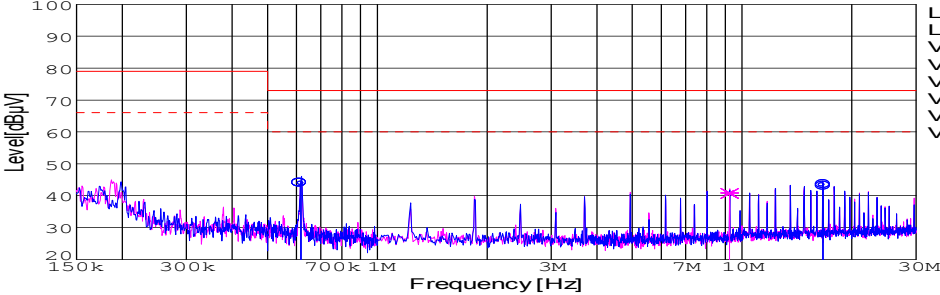
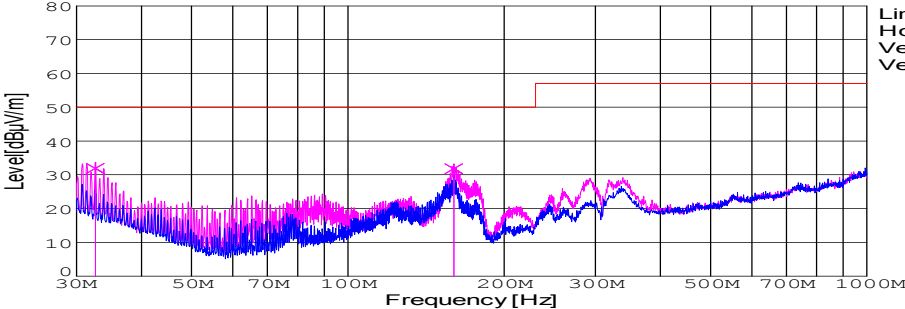
(2)Testing circuitry



C1: 1 $\mu$ F 100V Ceramic capacitor  
C2: 2200pF 630V Ceramic capacitor  
C3 : 0.1 $\mu$ F 50V Ceramic capacitor

L1 : 1 $\mu$ H 2.4A Inductor  
L2 : ZJYS51R5-2P : TDK

Fig. Testing circuitry2

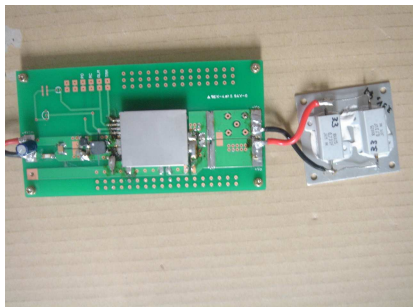
DATA SHEET							Date	07-Sep-06																																														
Model	SFCS154815						Temp.	25degreeC																																														
Test	EMI Line conduction & Radiated emission						Humid.	45 %RH																																														
							Tested by	S.Shiina																																														
LINE CONDUCTION																																																						
Model Name		SFCS154815			Temp.		25degreeC																																															
Model No.					Humi.		45%																																															
Serial No.					Date		2006/9/7 15:32																																															
Points		3			Test Equip.		R3132,ESPC																																															
Detector		PEAK/QP/Ave.			Load Line		100mm																																															
Line Mode		VA/VB			Comment																																																	
Power Supply		DC 48V																																																				
Limit1:		[CISPR Pub11] Class A Gr.1(QP)																																																				
Limit2:		[CISPR Pub11] Class A Gr.1(Ave.)																																																				
							Limit1(QP) Limit2(Ave.) VA(PEAK) VB(PEAK) VA(QP) VA(Ave.) VB(QP) VB(Ave.)		Testing circuitry 1																																													
<table><tr><th>Frequency [MHz]</th><th>Meter Reading (Ave.) [dBuV]</th><th>Meter Reading (QP) [dBuV]</th><th>Factor [dB]</th><th>Level(Ave.) [dBuV]</th><th>Level(QP) [dBuV]</th><th>Line</th><th>Limit(Ave.) [dBuV]</th><th>Limit(QP) [dBuV]</th><th>Margin(Ave.) [dB]</th><th>Margin(QP) [dB]</th></tr><tr><td>0.6167</td><td>34.1</td><td>34.3</td><td>9.9</td><td>44</td><td>44.2</td><td>VA</td><td>60</td><td>73</td><td>16</td><td>28.8</td></tr><tr><td>16.6389</td><td>33.3</td><td>33</td><td>10.2</td><td>43.5</td><td>43.2</td><td>VA</td><td>60</td><td>73</td><td>16.5</td><td>29.8</td></tr><tr><td>9.2442</td><td>30.8</td><td>30.6</td><td>10.1</td><td>40.9</td><td>40.7</td><td>VB</td><td>60</td><td>73</td><td>19.1</td><td>32.3</td></tr></table>											Frequency [MHz]	Meter Reading (Ave.) [dBuV]	Meter Reading (QP) [dBuV]	Factor [dB]	Level(Ave.) [dBuV]	Level(QP) [dBuV]	Line	Limit(Ave.) [dBuV]	Limit(QP) [dBuV]	Margin(Ave.) [dB]	Margin(QP) [dB]	0.6167	34.1	34.3	9.9	44	44.2	VA	60	73	16	28.8	16.6389	33.3	33	10.2	43.5	43.2	VA	60	73	16.5	29.8	9.2442	30.8	30.6	10.1	40.9	40.7	VB	60	73	19.1	32.3
Frequency [MHz]	Meter Reading (Ave.) [dBuV]	Meter Reading (QP) [dBuV]	Factor [dB]	Level(Ave.) [dBuV]	Level(QP) [dBuV]	Line	Limit(Ave.) [dBuV]	Limit(QP) [dBuV]	Margin(Ave.) [dB]	Margin(QP) [dB]																																												
0.6167	34.1	34.3	9.9	44	44.2	VA	60	73	16	28.8																																												
16.6389	33.3	33	10.2	43.5	43.2	VA	60	73	16.5	29.8																																												
9.2442	30.8	30.6	10.1	40.9	40.7	VB	60	73	19.1	32.3																																												
RADIATED EMISSION																																																						
Model Name		SFCS154815			Temp.		25degreeC																																															
Model No.					Humi.		45%																																															
Serial No.					Date		2006/9/8 20:58																																															
Points		2			Test Equip.		R3132,ESPC																																															
Detector		PEAK/QP			Load Line		100mm																																															
Polarization		Vertical			Comment																																																	
Power Supply		DC 48V																																																				
Limit:		[CISPR 11] Class A Group 1<3m>																																																				
							Limit(QP) Horizontal(PEAK) Vertical(PEAK) Vertical(QP)		Testing circuitry 1																																													
<table><tr><th>Frequency [MHz]</th><th>MeterReading (QP) [dBuV]</th><th>Ant. Type</th><th>Antenna Factor [dB/m]</th><th>Cable &amp; Preamp [dB]</th><th>Level(QP) [dBuV/m]</th><th>Angle [°]</th><th>Height [cm]</th><th>Polar.</th><th>Limit [dBuV/m]</th><th>Margin [dB]</th></tr><tr><td>32.622</td><td>47.2</td><td>BL</td><td>16.9</td><td>-32.2</td><td>31.9</td><td>259</td><td>100</td><td>Vert.</td><td>50</td><td>18.1</td></tr><tr><td>160.014</td><td>53.4</td><td>BL</td><td>9.9</td><td>-31.5</td><td>31.8</td><td>0</td><td>150</td><td>Vert.</td><td>50</td><td>18.2</td></tr></table>											Frequency [MHz]	MeterReading (QP) [dBuV]	Ant. Type	Antenna Factor [dB/m]	Cable & Preamp [dB]	Level(QP) [dBuV/m]	Angle [°]	Height [cm]	Polar.	Limit [dBuV/m]	Margin [dB]	32.622	47.2	BL	16.9	-32.2	31.9	259	100	Vert.	50	18.1	160.014	53.4	BL	9.9	-31.5	31.8	0	150	Vert.	50	18.2											
Frequency [MHz]	MeterReading (QP) [dBuV]	Ant. Type	Antenna Factor [dB/m]	Cable & Preamp [dB]	Level(QP) [dBuV/m]	Angle [°]	Height [cm]	Polar.	Limit [dBuV/m]	Margin [dB]																																												
32.622	47.2	BL	16.9	-32.2	31.9	259	100	Vert.	50	18.1																																												
160.014	53.4	BL	9.9	-31.5	31.8	0	150	Vert.	50	18.2																																												

DATA SHEET		Date	07-Sep-06
Model	SFCS154815	Temp.	25degreeC
Test	EMI Line conduction & Radiated emission	Humid.	45 %RH
		Tested by	S.Shiina

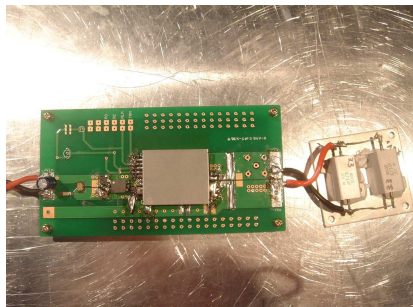
1.Conditions

(1)Photographs of Test Set-Up

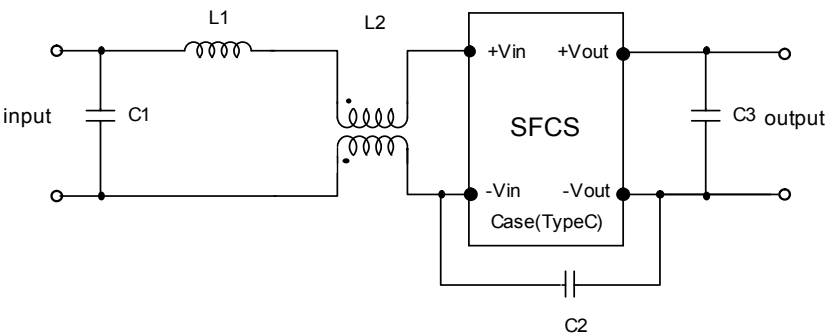
LINE CONDUCTION



Radiated emission



(2)Testing circuitry



- C1 : 1 $\mu$ F 100V Ceramic capacitor

C2 : 2200pF 630V Ceramic capacitor

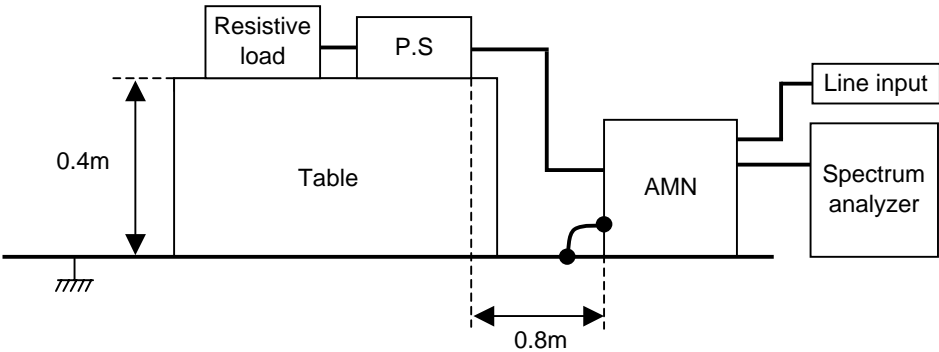
C3 : 0.1 $\mu$ F 50V Ceramic capacitor
- L1 : 1 $\mu$ H 2.4A Inductor

L2 : ZJYS51R5-2P : TDK

Fig. Testing circuitry1

DATA SHEET		Date	07-Sep-06
Model	Circuit used for measurement	Temp.	25 degreeC
Test	EMI Line conduction & Radiated emission	Humid.	45 %RH
		Tested by	S.Shiina

1. Line conduction



2. Radiated emission

