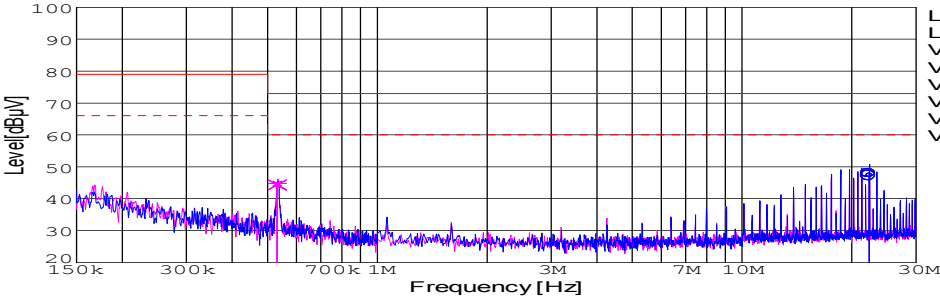
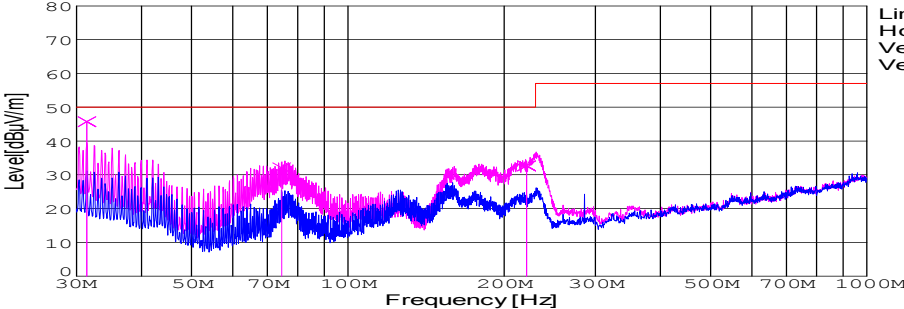


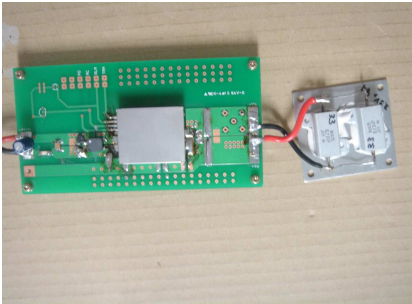
DATA SHEET							Date	09-Jun-06																																														
Model	SFCS302405						Temp.	25degreeC																																														
Test	EMI Line conduction & Radiated emission						Humid.	45 %RH																																														
							Tested by	S.Shiina																																														
LINE CONDUCTION																																																						
Model Name		SFCS302405			Temp.		25degreeC																																															
Model No.					Humi.		45%																																															
Serial No.					Date		2006/6/9 14:48																																															
Points		2			Test Equip.		R3132,ESPC																																															
Detector		PEAK/QP/Ave.			Load Line		100mm																																															
Line Mode		VA/VB			Comment																																																	
Power Supply		DC 24V																																																				
Limit1:		[CISPR Pub11] Class A Gr.1(QP)																																																				
Limit2:		[CISPR Pub11] Class A Gr.1(Ave.)																																																				
							Limit1(QP) Limit2(Ave.) VA(PEAK) VB(PEAK) VA(QP) VA(Ave.) VB(QP) VB(Ave.)		Testing circuitry 2																																													
<table><tr><th>Frequency [MHz]</th><th>Meter Reading (Ave.) [dBuV]</th><th>Meter Reading (QP) [dBuV]</th><th>Factor [dB]</th><th>Level(Ave.) [dBuV]</th><th>Level(QP) [dBuV]</th><th>Line</th><th>Limit(Ave.) [dBuV]</th><th>Limit(QP) [dBuV]</th><th>Margin(Ave.) [dB]</th><th>Margin(QP) [dB]</th></tr><tr><td>22.3466</td><td>36.9</td><td>37.7</td><td>10.3</td><td>47.2</td><td>48</td><td>VA</td><td>60</td><td>73</td><td>12.8</td><td>25</td></tr><tr><td>0.5319</td><td>34.9</td><td>34.4</td><td>9.9</td><td>44.8</td><td>44.3</td><td>VB</td><td>60</td><td>73</td><td>15.2</td><td>28.7</td></tr></table>											Frequency [MHz]	Meter Reading (Ave.) [dBuV]	Meter Reading (QP) [dBuV]	Factor [dB]	Level(Ave.) [dBuV]	Level(QP) [dBuV]	Line	Limit(Ave.) [dBuV]	Limit(QP) [dBuV]	Margin(Ave.) [dB]	Margin(QP) [dB]	22.3466	36.9	37.7	10.3	47.2	48	VA	60	73	12.8	25	0.5319	34.9	34.4	9.9	44.8	44.3	VB	60	73	15.2	28.7											
Frequency [MHz]	Meter Reading (Ave.) [dBuV]	Meter Reading (QP) [dBuV]	Factor [dB]	Level(Ave.) [dBuV]	Level(QP) [dBuV]	Line	Limit(Ave.) [dBuV]	Limit(QP) [dBuV]	Margin(Ave.) [dB]	Margin(QP) [dB]																																												
22.3466	36.9	37.7	10.3	47.2	48	VA	60	73	12.8	25																																												
0.5319	34.9	34.4	9.9	44.8	44.3	VB	60	73	15.2	28.7																																												
RADIATED EMISSION																																																						
Model Name		SFCS302405			Temp.		25degreeC																																															
Model No.					Humi.		100mm																																															
Serial No.					Date		2006/6/9 14:57																																															
Points		3			Test Equip.		R3132,ESPC																																															
Detector		PEAK/QP			Load Line		100mm																																															
Polarization		Vertical			Comment																																																	
Power Supply		DC 24V																																																				
Limit:		[CISPR 11] Class A Group 1<3m>																																																				
							Limit(QP) Horizontal(PEAK) Vertical(PEAK) Vertical(QP)		Testing circuitry 2																																													
<table><tr><th>Frequency [MHz]</th><th>MeterReading (QP) [dBuV]</th><th>Ant. Type</th><th>Antenna Factor [dB/m]</th><th>Cable & Preamp [dB]</th><th>Level(QP) [dBuV/m]</th><th>Angle [°]</th><th>Height [cm]</th><th>Polar.</th><th>Limit [dBuV/m]</th><th>Margin [dB]</th></tr><tr><td>31.43</td><td>60.4</td><td>BL</td><td>17.5</td><td>-32.2</td><td>45.7</td><td>342</td><td>100</td><td>Vert.</td><td>50</td><td>4.3</td></tr><tr><td>74.561</td><td>57.7</td><td>BL</td><td>6.3</td><td>-31.9</td><td>32.1</td><td>124</td><td>100</td><td>Vert.</td><td>50</td><td>17.9</td></tr><tr><td>220.928</td><td>54.8</td><td>BL</td><td>9</td><td>-31.2</td><td>32.6</td><td>167</td><td>125</td><td>Vert.</td><td>50</td><td>17.4</td></tr></table>											Frequency [MHz]	MeterReading (QP) [dBuV]	Ant. Type	Antenna Factor [dB/m]	Cable & Preamp [dB]	Level(QP) [dBuV/m]	Angle [°]	Height [cm]	Polar.	Limit [dBuV/m]	Margin [dB]	31.43	60.4	BL	17.5	-32.2	45.7	342	100	Vert.	50	4.3	74.561	57.7	BL	6.3	-31.9	32.1	124	100	Vert.	50	17.9	220.928	54.8	BL	9	-31.2	32.6	167	125	Vert.	50	17.4
Frequency [MHz]	MeterReading (QP) [dBuV]	Ant. Type	Antenna Factor [dB/m]	Cable & Preamp [dB]	Level(QP) [dBuV/m]	Angle [°]	Height [cm]	Polar.	Limit [dBuV/m]	Margin [dB]																																												
31.43	60.4	BL	17.5	-32.2	45.7	342	100	Vert.	50	4.3																																												
74.561	57.7	BL	6.3	-31.9	32.1	124	100	Vert.	50	17.9																																												
220.928	54.8	BL	9	-31.2	32.6	167	125	Vert.	50	17.4																																												

DATA SHEET		Date	09-Jun-06
Model	SFCS302405	Temp.	25degreeC
Test	EMI Line conduction & Radiated emission	Humid.	45 %RH
		Tested by	S.Shiina

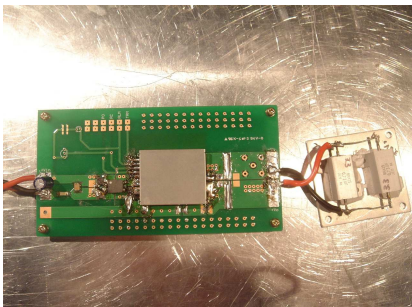
1.Conditions

(1)Photographs of Test Set-Up

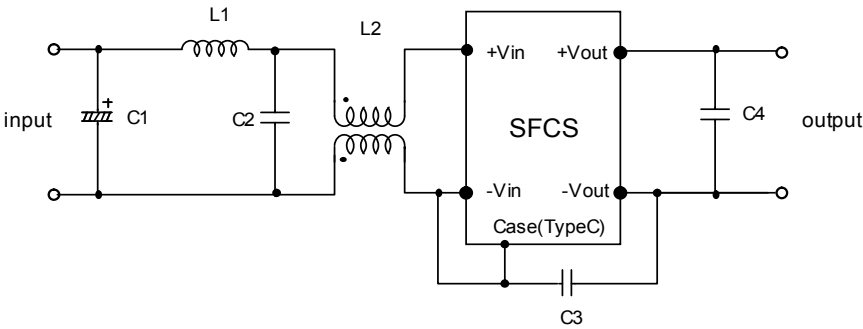
LINE CONDUCTION



Radiated emission



(2)Testing circuitry



- C1 : 68 μ F 63V Electric capacitor

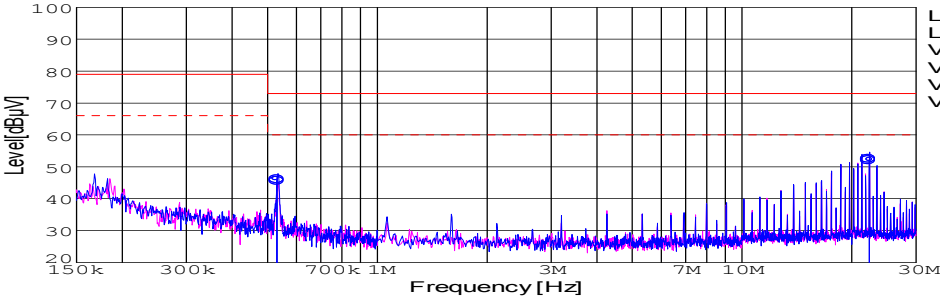
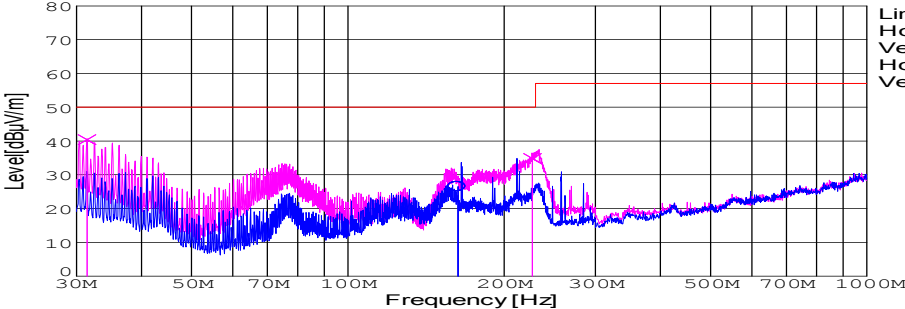
C2 : 1 μ F 100V Ceramic capacitor

C3 : 1000pF 630V Ceramic capacitor

C4 : 22 μ F 16V Ceramic capacitor
- L1 : 1 μ H 2.4A Inductor

L2 : ZJYS51R5-2P : TDK

Fig. Testing circuitry2

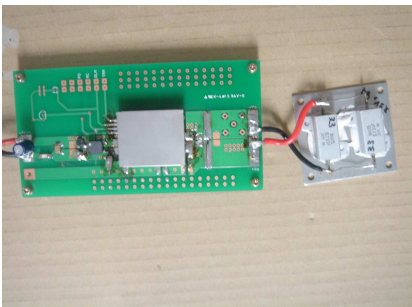
DATA SHEET							Date	09-Jun-06																																														
Model	SFCS302405						Temp.	25degreeC																																														
Test	EMI Line conduction & Radiated emission						Humid.	45 %RH																																														
							Tested by	S.Shiina																																														
LINE CONDUCTION																																																						
Model Name		SFCS302405			Temp.		25degreeC																																															
Model No.					Humi.		45%																																															
Serial No.					Date		2006/6/9 14:42																																															
Points		2			Test Equip.		R3132,ESPC																																															
Detector		PEAK/QP/Ave.			Load Line		100mm																																															
Line Mode		VA			Comment																																																	
Power Supply		DC 24V																																																				
Limit1:		[CISPR Pub11] Class A Gr.1(QP)																																																				
Limit2:		[CISPR Pub11] Class A Gr.1(Ave.)																																																				
							Limit1(QP)		—																																													
							Limit2(Ave.)		- - -																																													
							VA(PEAK)		—																																													
							VB(PEAK)		—																																													
							VA(QP)		○																																													
							VA(Ave.)		●																																													
							Testing circuitry 1																																															
<table><tr><th>Frequency [MHz]</th><th>Meter Reading (Ave.) [dBuV]</th><th>Meter Reading (QP) [dBuV]</th><th>Factor [dB]</th><th>Level(Ave.) [dBuV]</th><th>Level(QP) [dBuV]</th><th>Line</th><th>Limit(Ave.) [dBuV]</th><th>Limit(QP) [dBuV]</th><th>Margin(Ave.) [dB]</th><th>Margin(QP) [dB]</th></tr><tr><td>0.5313</td><td>36.2</td><td>35.7</td><td>9.9</td><td>46.1</td><td>45.6</td><td>VA</td><td>60</td><td>73</td><td>13.9</td><td>27.4</td></tr><tr><td>22.3472</td><td>41.7</td><td>42</td><td>10.3</td><td>52</td><td>52.3</td><td>VA</td><td>60</td><td>73</td><td>8</td><td>20.7</td></tr></table>											Frequency [MHz]	Meter Reading (Ave.) [dBuV]	Meter Reading (QP) [dBuV]	Factor [dB]	Level(Ave.) [dBuV]	Level(QP) [dBuV]	Line	Limit(Ave.) [dBuV]	Limit(QP) [dBuV]	Margin(Ave.) [dB]	Margin(QP) [dB]	0.5313	36.2	35.7	9.9	46.1	45.6	VA	60	73	13.9	27.4	22.3472	41.7	42	10.3	52	52.3	VA	60	73	8	20.7											
Frequency [MHz]	Meter Reading (Ave.) [dBuV]	Meter Reading (QP) [dBuV]	Factor [dB]	Level(Ave.) [dBuV]	Level(QP) [dBuV]	Line	Limit(Ave.) [dBuV]	Limit(QP) [dBuV]	Margin(Ave.) [dB]	Margin(QP) [dB]																																												
0.5313	36.2	35.7	9.9	46.1	45.6	VA	60	73	13.9	27.4																																												
22.3472	41.7	42	10.3	52	52.3	VA	60	73	8	20.7																																												
RADIATED EMISSION																																																						
Model Name		SFCS302405			Temp.		25degreeC																																															
Model No.					Humi.		45%																																															
Serial No.					Date		2006/6/9 15:25																																															
Points		3			Test Equip.		R3132,ESPC																																															
Detector		PEAK/QP			Load Line		100mm																																															
Polarization		Hori. & Vert.			Comment																																																	
Power Supply		DC 24V																																																				
Limit:		[CISPR 11] Class A Group 1<3m>																																																				
							Limit(QP)		—																																													
							Horizontal(PEAK)		—																																													
							Vertical(PEAK)		—																																													
							Horizontal(QP)		○																																													
							Vertical(QP)		×																																													
							Testing circuitry 1																																															
<table><tr><th>Frequency [MHz]</th><th>MeterReading (QP) [dBuV]</th><th>Ant. Type</th><th>Antenna Factor [dB/m]</th><th>Cable & Preamp [dB]</th><th>Level(QP) [dBuV/m]</th><th>Angle [°]</th><th>Height [cm]</th><th>Polar.</th><th>Limit [dBuV/m]</th><th>Margin [dB]</th></tr><tr><td>162.979</td><td>48.3</td><td>BL</td><td>9.6</td><td>-31.5</td><td>26.4</td><td>182</td><td>159</td><td>Hori.</td><td>50</td><td>23.6</td></tr><tr><td>31.433</td><td>55.1</td><td>BL</td><td>17.5</td><td>-32.2</td><td>40.4</td><td>74</td><td>100</td><td>Vert.</td><td>50</td><td>9.6</td></tr><tr><td>226.85</td><td>56.5</td><td>BL</td><td>9.5</td><td>-31.2</td><td>34.8</td><td>95</td><td>113</td><td>Vert.</td><td>50</td><td>15.2</td></tr></table>											Frequency [MHz]	MeterReading (QP) [dBuV]	Ant. Type	Antenna Factor [dB/m]	Cable & Preamp [dB]	Level(QP) [dBuV/m]	Angle [°]	Height [cm]	Polar.	Limit [dBuV/m]	Margin [dB]	162.979	48.3	BL	9.6	-31.5	26.4	182	159	Hori.	50	23.6	31.433	55.1	BL	17.5	-32.2	40.4	74	100	Vert.	50	9.6	226.85	56.5	BL	9.5	-31.2	34.8	95	113	Vert.	50	15.2
Frequency [MHz]	MeterReading (QP) [dBuV]	Ant. Type	Antenna Factor [dB/m]	Cable & Preamp [dB]	Level(QP) [dBuV/m]	Angle [°]	Height [cm]	Polar.	Limit [dBuV/m]	Margin [dB]																																												
162.979	48.3	BL	9.6	-31.5	26.4	182	159	Hori.	50	23.6																																												
31.433	55.1	BL	17.5	-32.2	40.4	74	100	Vert.	50	9.6																																												
226.85	56.5	BL	9.5	-31.2	34.8	95	113	Vert.	50	15.2																																												

DATA SHEET		Date	09-Jun-06
Model	SFCS302405	Temp.	25degreeC
Test	EMI Line conduction & Radiated emission	Humid.	45 %RH
		Tested by	S.Shiina

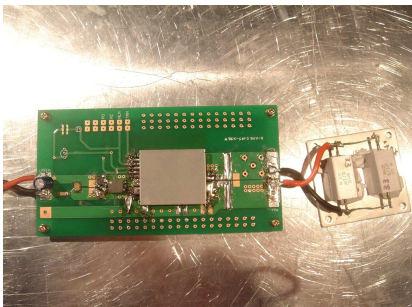
1.Conditions

(1)Photographs of Test Set-Up

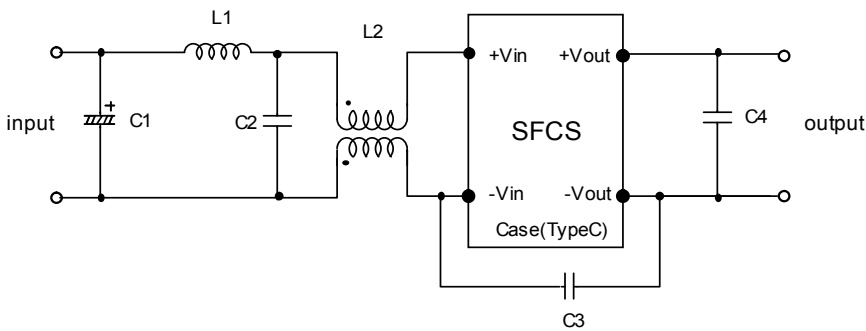
LINE CONDUCTION



Radiated emission



(2)Testing circuitry



- C1 : 68 μ F 63V Electric capacitor

C2 : 1 μ F 100V Ceramic capacitor

C3 : 1000pF 630V Ceramic capacitor

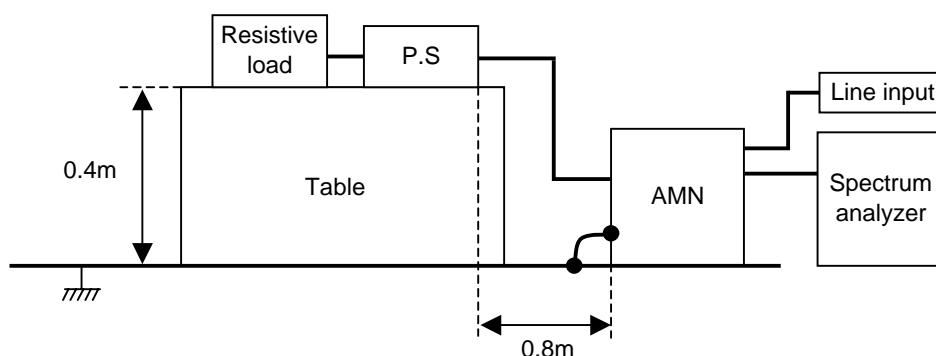
C4 : 22 μ F 16V Ceramic capacitor
- L1 : 1 μ H 2.4A Inductor

L2 : ZJYS51R5-2P : TDK

Fig. Testing circuitry1

DATA SHEET		Date	09-Jun-06
Model	Circuit used for measurement	Temp.	25 degreeC
Test	EMI Line conduction & Radiated emission	Humid.	45 %RH
		Tested by	S.Shiina

1. Line conduction



2. Radiated emission

