

DATA SHEET				Date	10-Aug-06
Model	SFCS302412			Temp.	25degreeC
Test	EMI Line conduction & Radiated emission			Humid.	45 %RH
				Tested by	S.Shiina

LINE CONDUCTION

Model Name : SFCS302412 Temp. : 25degreeC
 Model No. : Humi. : 45%
 Serial No. : Date : 2006/8/10 19:34
 Points : 2 Test Equip. : R3132,ESPC
 Detector : PEAK/QP/Ave. Load Line : 100mm
 Line Mode : VA/VB Comment :
 Power Supply : DC 24V
 Limit1: [CISPR Pub11] Class A Gr.1(QP)
 Limit2: [CISPR Pub11] Class A Gr.1(Ave.)

Testing circuitry 2

Frequency [MHz]	Meter Reading (Ave.) [dBuV]	Meter Reading (QP) [dBuV]	Factor [dB]	Level(Ave.) [dBuV]	Level(QP) [dBuV]	Line	Limit(Ave.) [dBuV]	Limit(QP) [dBuV]	Margin(Ave.) [dB]	Margin(QP) [dB]
17.9992	38.8	38.7	10.2	49	48.9	VA	60	73	11	24.1
0.4994	42.6	42.1	9.9	52.5	52	VB	66	79	13.5	27

RADIATED EMISSION

Model Name : SFCS302412 Temp. : 25degreeC
 Model No. : Humi. : 45%
 Serial No. : Date : 2006/8/10 19:59
 Points : 2 Test Equip. : R3132,ESPC
 Detector : PEAK/QP Load Line : 100mm
 Polarization : Vertical Comment :
 Power Supply : DC 24V
 Limit: [CISPR 11] Class A Group 1<3m>

Testing circuitry 2

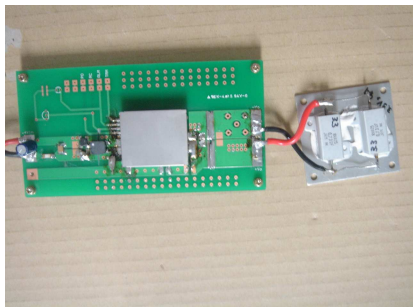
Frequency [MHz]	MeterReading (QP) [dBuV]	Ant. Type	Antenna Factor [dB/m]	Cable & Preamp [dB]	Level(QP) [dBuV/m]	Angle [°]	Height [cm]	Polar.	Limit [dBuV/m]	Margin [dB]
65.948	58.3	BL	4.9	-21.7	41.5	168	109	Vert.	50	8.5
160.869	56	BL	9.8	-25.5	40.3	315	141	Vert.	50	9.7

DATA SHEET		Date	10-Aug-06
Model	SFCS302412	Temp.	25degreeC
Test	EMI Line conduction & Radiated emission	Humid.	45 %RH
		Tested by	S.Shiina

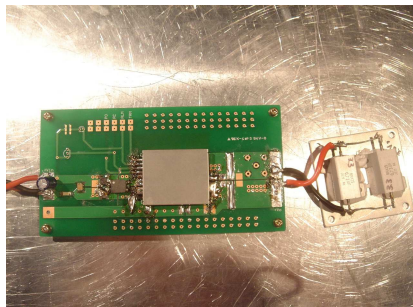
1.Conditions

(1)Photographs of Test Set-Up

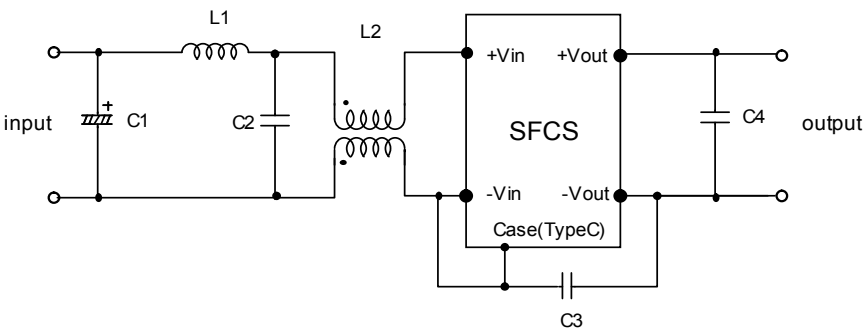
LINE CONDUCTION



Radiated emission



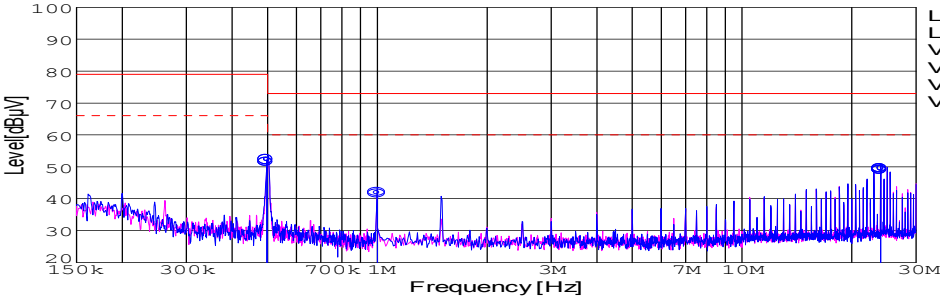
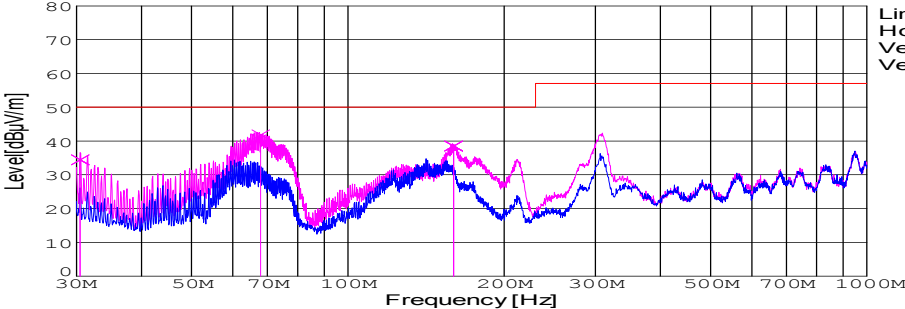
(2)Testing circuitry



C1 : 68µF 63V Electric capacitor
C2 : 1µF 100V Ceramic capacitor
C3 : 2200pF 630V Ceramic capacitor
C4 : 0.1µF 50V Ceramic capacitor

L1 : 1µH 2.4A Inductor
L2 : ZJYS51R5-2P : TDK

Fig. Testing circuitry2

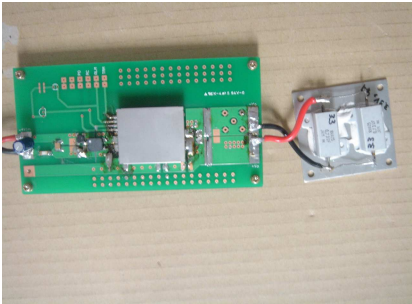
DATA SHEET							Date	10-Aug-06		
Model	SFCS302412						Temp.	25degreeC		
Test	EMI Line conduction & Radiated emission						Humid.	45 %RH		
							Tested by	S.Shiina		
LINE CONDUCTION										
Model Name : SFCS302412			Temp. : 25degreeC							
Model No. :			Humi. : 45%							
Serial No. :			Date : 2006/8/10 16:56							
Points : 3			Test Equip. : R3132,ESPC							
Detector : PEAK/QP/Ave.			Load Line : 100mm							
Line Mode : VA			Comment :							
Power Supply : DC 24V										
Limit1: [CISPR Pub11] Class A Gr.1(QP)										
Limit2: [CISPR Pub11] Class A Gr.1(Ave.)										
							Limit1(QP) ——— Limit2(Ave.) - - - VA(PEAK) ——— VB(PEAK) ——— VA(QP) ○ VA(Ave.) ●			
							Testing circuitry 1			
Frequency [MHz]	Meter Reading (Ave.) [dBuV]	Meter Reading (QP) [dBuV]	Factor [dB]	Level(Ave.) [dBuV]	Level(QP) [dBuV]	Line	Limit(Ave.) [dBuV]	Limit(QP) [dBuV]	Margin(Ave.) [dB]	Margin(QP) [dB]
0.4985	42.3	41.7	9.9	52.2	51.6	VA	66	79	13.8	27.4
0.9998	32	31.5	9.9	41.9	41.4	VA	60	73	18.1	31.6
23.9794	39.1	38.6	10.3	49.4	48.9	VA	60	73	10.6	24.1
RADIATED EMISSION										
Model Name : SFCS302412			Temp. : 25degreeC							
Model No. :			Humi. : 45%							
Serial No. :			Date : 2006/8/10 18:54							
Points : 3			Test Equip. : R3132,ESPC							
Detector : PEAK/QP			Load Line : 100mm							
Polarization : Vertical			Comment :							
Power Supply : DC 24V										
Limit: [CISPR 11] Class A Group 1<3m>										
							Limit(QP) ——— Horizontal(PEAK) - - - Vertical(PEAK) ——— Vertical(QP) ×			
							Testing circuitry 1			
Frequency [MHz]	MeterReading (QP)[dBuV]	Ant. Type	Antenna Factor[dB/m]	Cable & Preamp[dB]	Level(QP) [dBuV/m]	Angle [°]	Height[cm]	Polar.	Limit [dBuV/m]	Margin [dB]
30.492	48.6	BL	18	-32.2	34.4	337	107	Vert.	50	15.6
67.947	58.5	BL	5.2	-21.9	41.8	358	112	Vert.	50	8.2
159.868	54.3	BL	9.9	-25.7	38.5	0	145	Vert.	50	11.5

DATA SHEET		Date	10-Aug-06
Model	SFCS302412	Temp.	25degreeC
Test	EMI Line conduction & Radiated emission	Humid.	45 %RH
		Tested by	S.Shiina

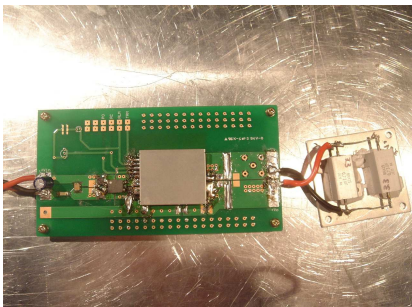
1.Conditions

(1)Photographs of Test Set-Up

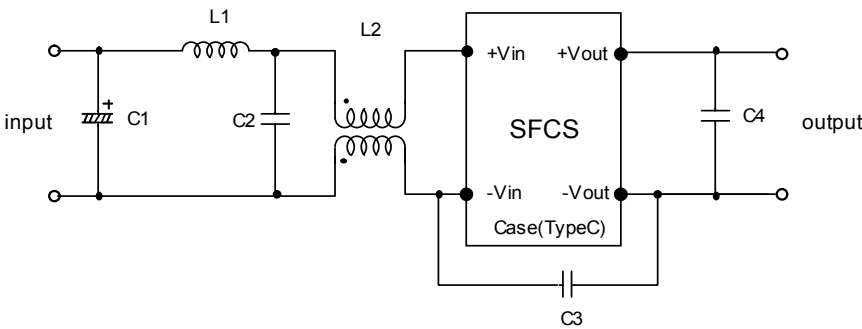
LINE CONDUCTION



Radiated emission



(2)Testing circuitry



- C1 : 68 μ F 63V Electric capacitor

C2 : 1 μ F 100V Ceramic capacitor

C3 : 2200pF 630V Ceramic capacitor

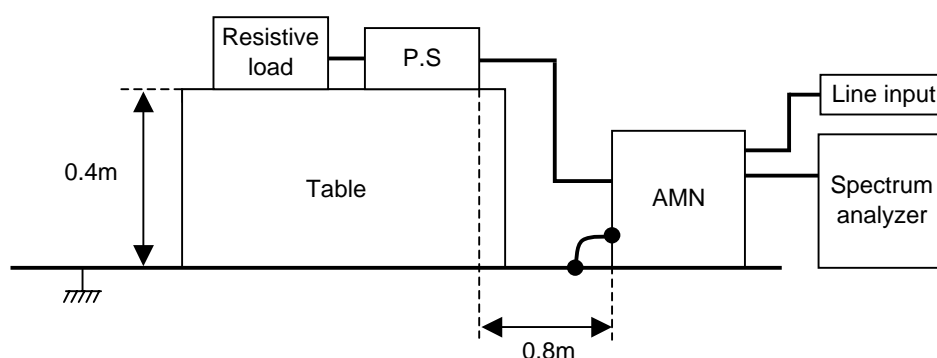
C4 : 0.1 μ F 50V Ceramic capacitor
- L1 : 1 μ H 2.4A Inductor

L2 : ZJYS51R5-2P : TDK

Fig. Testing circuitry1

DATA SHEET		Date	10-Aug-06
Model	Circuit used for measurement	Temp.	25 degreeC
Test	EMI Line conduction & Radiated emission	Humid.	45 %RH
		Tested by	S.Shiina

1. Line conduction



2. Radiated emission

