

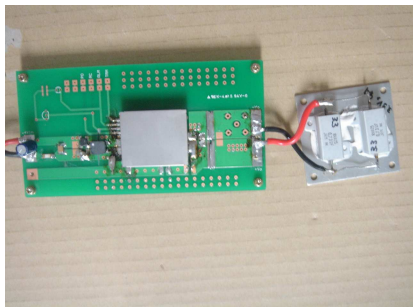
DATA SHEET							Date	12-Mar-07																																														
Model	SFCS30483R3						Temp.	25degreeC																																														
Test	EMI Line conduction & Radiated emission						Humid.	45 %RH																																														
							Tested by	S.Shiina																																														
LINE CONDUCTION																																																						
Model Name			SFCS30483R3		Temp.		25degreeC																																															
Model No.					Humi.		45%																																															
Serial No.					Date		2007/3/12 11:48																																															
Points			3		Test Equip.		R3132,ESPC																																															
Detector			PEAK/QP/Ave.		Load Line		100mm																																															
Line Mode			VA		Comment																																																	
Power Supply			DC 48V																																																			
Limit1:			[CISPR Pub11] Class A Gr.1(QP)																																																			
Limit2:			[CISPR Pub11] Class A Gr.1(Ave.)																																																			
							Testing circuitry 2																																															
<table><tr><th>Frequency [MHz]</th><th>Meter Reading (Ave.) [dBuV]</th><th>Meter Reading (QP) [dBuV]</th><th>Factor [dB]</th><th>Level(Ave.) [dBuV]</th><th>Level(QP) [dBuV]</th><th>Line</th><th>Limit(Ave.) [dBuV]</th><th>Limit(QP) [dBuV]</th><th>Margin(Ave.) [dB]</th><th>Margin(QP) [dB]</th></tr><tr><td>0.526</td><td>28.6</td><td>29.1</td><td>9.9</td><td>38.5</td><td>39</td><td>VA</td><td>60</td><td>73</td><td>21.5</td><td>34</td></tr><tr><td>18.9455</td><td>31.4</td><td>31.2</td><td>10.3</td><td>41.7</td><td>41.5</td><td>VA</td><td>60</td><td>73</td><td>18.3</td><td>31.5</td></tr><tr><td>29.4694</td><td>36.1</td><td>37.5</td><td>10.5</td><td>46.6</td><td>48</td><td>VA</td><td>60</td><td>73</td><td>13.4</td><td>25</td></tr></table>											Frequency [MHz]	Meter Reading (Ave.) [dBuV]	Meter Reading (QP) [dBuV]	Factor [dB]	Level(Ave.) [dBuV]	Level(QP) [dBuV]	Line	Limit(Ave.) [dBuV]	Limit(QP) [dBuV]	Margin(Ave.) [dB]	Margin(QP) [dB]	0.526	28.6	29.1	9.9	38.5	39	VA	60	73	21.5	34	18.9455	31.4	31.2	10.3	41.7	41.5	VA	60	73	18.3	31.5	29.4694	36.1	37.5	10.5	46.6	48	VA	60	73	13.4	25
Frequency [MHz]	Meter Reading (Ave.) [dBuV]	Meter Reading (QP) [dBuV]	Factor [dB]	Level(Ave.) [dBuV]	Level(QP) [dBuV]	Line	Limit(Ave.) [dBuV]	Limit(QP) [dBuV]	Margin(Ave.) [dB]	Margin(QP) [dB]																																												
0.526	28.6	29.1	9.9	38.5	39	VA	60	73	21.5	34																																												
18.9455	31.4	31.2	10.3	41.7	41.5	VA	60	73	18.3	31.5																																												
29.4694	36.1	37.5	10.5	46.6	48	VA	60	73	13.4	25																																												
RADIATED EMISSION																																																						
Model Name			SFCS30483R3		Temp.		25degreeC																																															
Model No.					Humi.		45%																																															
Serial No.					Date		2007/3/12 11:58																																															
Points			3		Test Equip.		R3132,ESPC																																															
Detector			PEAK/QP		Load Line		100mm																																															
Polarization			Vertical		Comment																																																	
Power Supply			DC 48V																																																			
Limit:			[CISPR 11] Class A Group 1<3m>																																																			
							Testing circuitry 2																																															
<table><tr><th>Frequency [MHz]</th><th>MeterReading (QP) [dBuV]</th><th>Ant. Type</th><th>Antenna Factor [dB/m]</th><th>Cable & Preamp [dB]</th><th>Level(QP) [dBuV/m]</th><th>Angle [°]</th><th>Height [cm]</th><th>Polar.</th><th>Limit [dBuV/m]</th><th>Margin [dB]</th></tr><tr><td>30.558</td><td>57.7</td><td>BL</td><td>17.9</td><td>-32.3</td><td>43.3</td><td>284</td><td>101</td><td>Vert.</td><td>50</td><td>6.7</td></tr><tr><td>85.926</td><td>58</td><td>BL</td><td>8.1</td><td>-31.9</td><td>34.2</td><td>40</td><td>108</td><td>Vert.</td><td>50</td><td>15.8</td></tr><tr><td>257.267</td><td>58.9</td><td>BL</td><td>13.3</td><td>-31.1</td><td>41.1</td><td>239</td><td>120</td><td>Vert.</td><td>57</td><td>15.9</td></tr></table>											Frequency [MHz]	MeterReading (QP) [dBuV]	Ant. Type	Antenna Factor [dB/m]	Cable & Preamp [dB]	Level(QP) [dBuV/m]	Angle [°]	Height [cm]	Polar.	Limit [dBuV/m]	Margin [dB]	30.558	57.7	BL	17.9	-32.3	43.3	284	101	Vert.	50	6.7	85.926	58	BL	8.1	-31.9	34.2	40	108	Vert.	50	15.8	257.267	58.9	BL	13.3	-31.1	41.1	239	120	Vert.	57	15.9
Frequency [MHz]	MeterReading (QP) [dBuV]	Ant. Type	Antenna Factor [dB/m]	Cable & Preamp [dB]	Level(QP) [dBuV/m]	Angle [°]	Height [cm]	Polar.	Limit [dBuV/m]	Margin [dB]																																												
30.558	57.7	BL	17.9	-32.3	43.3	284	101	Vert.	50	6.7																																												
85.926	58	BL	8.1	-31.9	34.2	40	108	Vert.	50	15.8																																												
257.267	58.9	BL	13.3	-31.1	41.1	239	120	Vert.	57	15.9																																												

DATA SHEET		Date	12-Mar-07
Model	SFCS30483R3	Temp.	25degreeC
Test	EMI Line conduction & Radiated emission	Humid.	45 %RH
		Tested by	S.Shiina

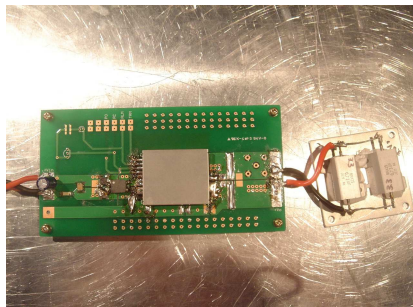
1.Conditions

(1)Photographs of Test Set-Up

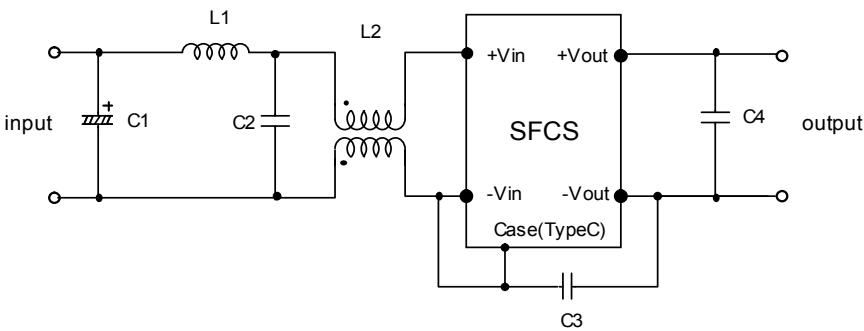
LINE CONDUCTION



Radiated emission



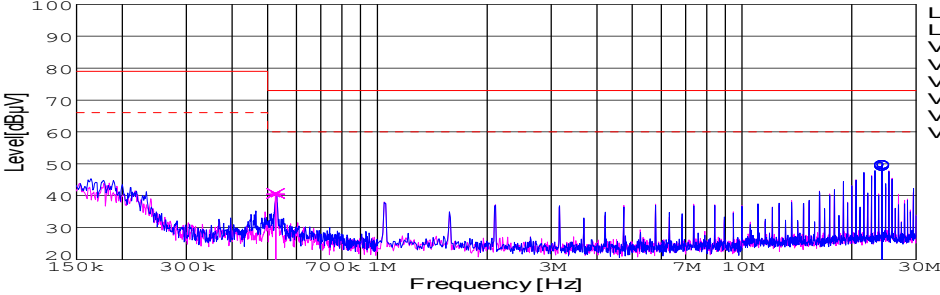
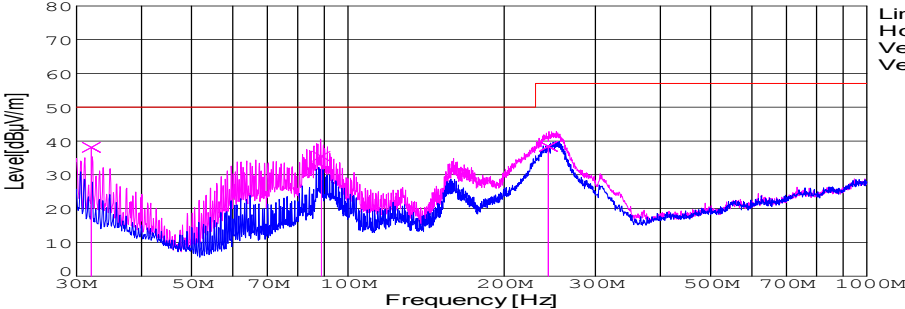
(2)Testing circuitry



C1 : 22 μ F 100V Electric capacitor
C2 : 1 μ F 100V Ceramic capacitor
C3 : 1000pF 630V Ceramic capacitor
C4 : 22 μ F 16V Ceramic capacitor

L1 : 1 μ H 2.4Inductor
L2 : ACM1211-102-2PL : TDK

Fig. Testing circuitry2

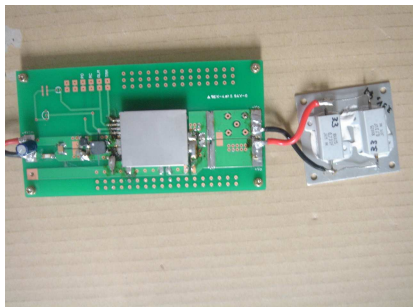
DATA SHEET							Date	09-Mar-07																																														
Model	SFCS30483R3						Temp.	25degreeC																																														
Test	EMI Line conduction & Radiated emission						Humid.	45 %RH																																														
							Tested by	S.Shiina																																														
LINE CONDUCTION																																																						
Model Name		SFCS30483R3			Temp.		25degreeC																																															
Model No.					Humi.		45%																																															
Serial No.					Date		2007/3/9 17:07																																															
Points		2			Test Equip.		R3132,ESPC																																															
Detector		PEAK/QP/Ave.			Load Line		100mm																																															
Line Mode		VA/VB			Comment																																																	
Power Supply		DC 48V																																																				
Limit1:		[CISPR Pub11] Class A Gr.1(QP)																																																				
Limit2:		[CISPR Pub11] Class A Gr.1(Ave.)																																																				
							Limit1(QP) Limit2(Ave.) VA(PEAK) VB(PEAK) VA(QP) VA(Ave.) VB(QP) VB(Ave.)		Testing circuitry 1																																													
<table><tr><th>Frequency [MHz]</th><th>Meter Reading (Ave.) [dBuV]</th><th>Meter Reading (QP) [dBuV]</th><th>Factor [dB]</th><th>Level(Ave.) [dBuV]</th><th>Level(QP) [dBuV]</th><th>Line</th><th>Limit(Ave.) [dBuV]</th><th>Limit(QP) [dBuV]</th><th>Margin(Ave.) [dB]</th><th>Margin(QP) [dB]</th></tr><tr><td>24.1979</td><td>39.2</td><td>38.9</td><td>10.3</td><td>49.5</td><td>49.2</td><td>VA</td><td>60</td><td>73</td><td>10.5</td><td>23.8</td></tr><tr><td>0.5264</td><td>30.5</td><td>30.8</td><td>9.9</td><td>40.4</td><td>40.7</td><td>VB</td><td>60</td><td>73</td><td>19.6</td><td>32.3</td></tr></table>											Frequency [MHz]	Meter Reading (Ave.) [dBuV]	Meter Reading (QP) [dBuV]	Factor [dB]	Level(Ave.) [dBuV]	Level(QP) [dBuV]	Line	Limit(Ave.) [dBuV]	Limit(QP) [dBuV]	Margin(Ave.) [dB]	Margin(QP) [dB]	24.1979	39.2	38.9	10.3	49.5	49.2	VA	60	73	10.5	23.8	0.5264	30.5	30.8	9.9	40.4	40.7	VB	60	73	19.6	32.3											
Frequency [MHz]	Meter Reading (Ave.) [dBuV]	Meter Reading (QP) [dBuV]	Factor [dB]	Level(Ave.) [dBuV]	Level(QP) [dBuV]	Line	Limit(Ave.) [dBuV]	Limit(QP) [dBuV]	Margin(Ave.) [dB]	Margin(QP) [dB]																																												
24.1979	39.2	38.9	10.3	49.5	49.2	VA	60	73	10.5	23.8																																												
0.5264	30.5	30.8	9.9	40.4	40.7	VB	60	73	19.6	32.3																																												
RADIATED EMISSION																																																						
Model Name		SFCS30483R3			Temp.		25degreeC																																															
Model No.					Humi.		45%																																															
Serial No.					Date		2007/3/9 17:17																																															
Points		3			Test Equip.		R3132,ESPC																																															
Detector		PEAK/QP			Load Line		100mm																																															
Polarization		Vertical			Comment																																																	
Power Supply		DC 48V																																																				
Limit:		[CISPR 11] Class A Group 1<3m>																																																				
							Limit(QP) Horizontal(PEAK) Vertical(PEAK) Vertical(QP)		Testing circuitry 1																																													
<table><tr><th>Frequency [MHz]</th><th>MeterReading (QP) [dBuV]</th><th>Ant. Type</th><th>Antenna Factor [dB/m]</th><th>Cable & Preamp [dB]</th><th>Level(QP) [dBuV/m]</th><th>Angle [°]</th><th>Height [cm]</th><th>Polar.</th><th>Limit [dBuV/m]</th><th>Margin [dB]</th></tr><tr><td>32.044</td><td>53.1</td><td>BL</td><td>17.2</td><td>-32.2</td><td>38.1</td><td>229</td><td>100</td><td>Vert.</td><td>50</td><td>11.9</td></tr><tr><td>88.888</td><td>59</td><td>BL</td><td>8.4</td><td>-31.9</td><td>35.5</td><td>358</td><td>150</td><td>Vert.</td><td>50</td><td>14.5</td></tr><tr><td>243.359</td><td>58</td><td>BL</td><td>11.5</td><td>-31.1</td><td>38.4</td><td>339</td><td>100</td><td>Vert.</td><td>57</td><td>18.6</td></tr></table>											Frequency [MHz]	MeterReading (QP) [dBuV]	Ant. Type	Antenna Factor [dB/m]	Cable & Preamp [dB]	Level(QP) [dBuV/m]	Angle [°]	Height [cm]	Polar.	Limit [dBuV/m]	Margin [dB]	32.044	53.1	BL	17.2	-32.2	38.1	229	100	Vert.	50	11.9	88.888	59	BL	8.4	-31.9	35.5	358	150	Vert.	50	14.5	243.359	58	BL	11.5	-31.1	38.4	339	100	Vert.	57	18.6
Frequency [MHz]	MeterReading (QP) [dBuV]	Ant. Type	Antenna Factor [dB/m]	Cable & Preamp [dB]	Level(QP) [dBuV/m]	Angle [°]	Height [cm]	Polar.	Limit [dBuV/m]	Margin [dB]																																												
32.044	53.1	BL	17.2	-32.2	38.1	229	100	Vert.	50	11.9																																												
88.888	59	BL	8.4	-31.9	35.5	358	150	Vert.	50	14.5																																												
243.359	58	BL	11.5	-31.1	38.4	339	100	Vert.	57	18.6																																												

DATA SHEET		Date	09-Mar-07
Model	SFCS30483R3	Temp.	25degreeC
Test	EMI Line conduction & Radiated emission	Humid.	45 %RH
		Tested by	S.Shiina

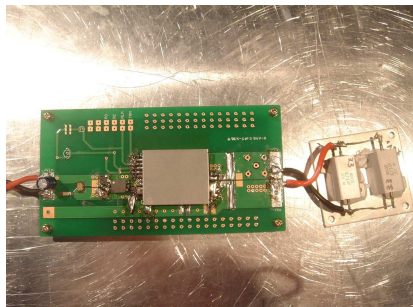
1.Conditions

(1)Photographs of Test Set-Up

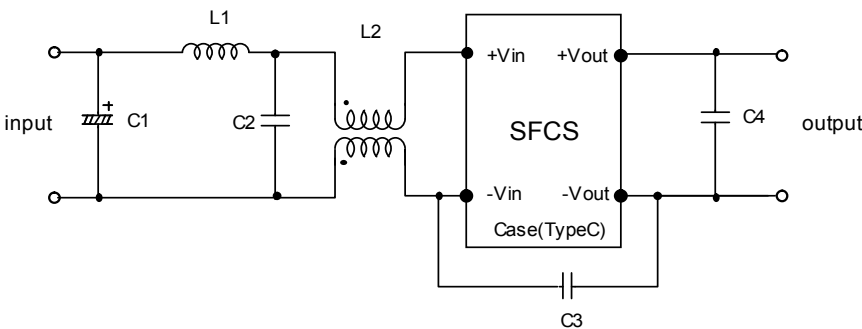
LINE CONDUCTION



Radiated emission



(2)Testing circuitry



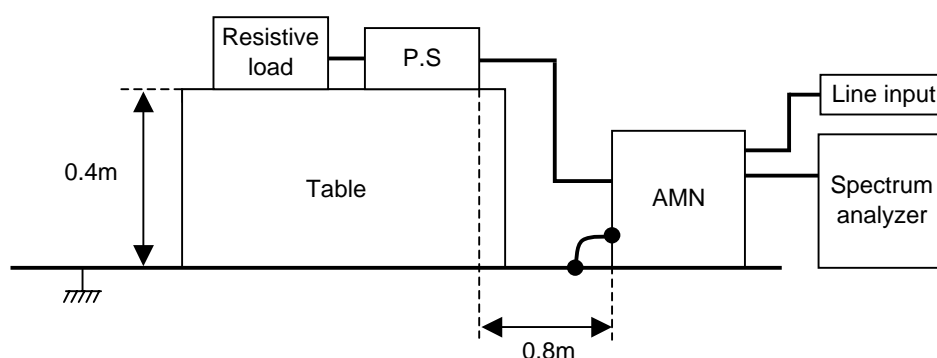
C1 : 22 μ F 100V Electric capacitor
C2 : 1 μ F 100V Ceramic capacitor
C3 : 1000pF 630V Ceramic capacitor
C4 : 22 μ F 16V Ceramic capacitor

L1 : 1 μ H 2.4A Inductor
L2 : ACM1211-102-2PL : TDK

Fig. Testing circuitry1

DATA SHEET		Date	12-Mar-07
Model	Circuit used for measurement	Temp.	25 degreeC
Test	EMI Line conduction & Radiated emission	Humid.	45 %RH
		Tested by	S.Shiina

1. Line conduction



2. Radiated emission

