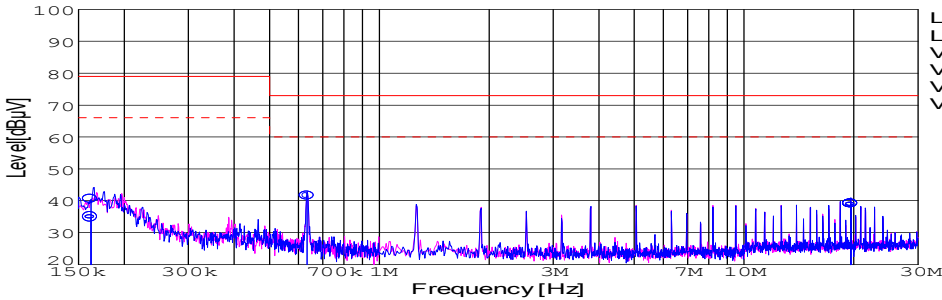
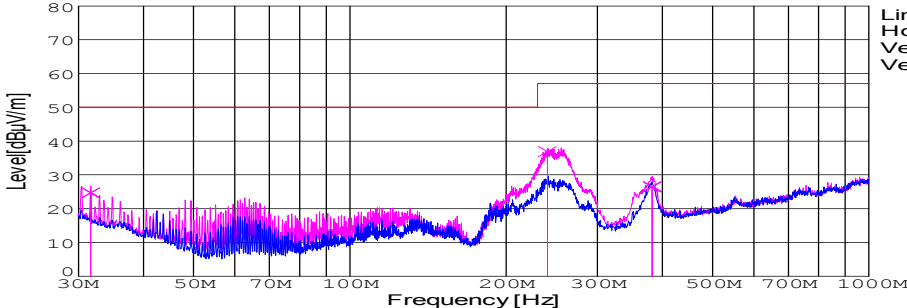


DATA SHEET							Date	12-Oct-07																																														
Model	SFS104805						Temp.	25 degreeC																																														
Test	EMI Line conduction & Radiated emission						Humid.	45 %RH																																														
							Tested by	Y.Miyawaki																																														
LINE CONDUCTION																																																						
Model Name : SFS104805			Temp. : 25degreeC																																																			
Model No. :			Humi. : 45%																																																			
Serial No. :			Date : 2007/10/12 9:36																																																			
Points : 3			Test Equip. : R3132,ESPC																																																			
Detector : PEAK/QP/Ave.			Load Line : 100mm																																																			
Line Mode : VA			Comment : Vo = 5.0V , Io = 2.0A																																																			
Power Supply : DC 48V																																																						
Limit1: [CISPR Pub11] Class A Gr.1(QP)																																																						
Limit2: [CISPR Pub11] Class A Gr.1(Ave.)																																																						
							<div>Limit1(QP) —</div> <div>Limit2(Ave.) - - -</div> <div>VA(PEAK) —</div> <div>VB(PEAK) —</div> <div>VA(QP) ○</div> <div>VA(Ave.) ●</div>																																															
<table><tr><th>Frequency [MHz]</th><th>Meter Reading (Ave.) [dBuV]</th><th>Meter Reading (QP) [dBuV]</th><th>Factor [dB]</th><th>Level(Ave.) [dBuV]</th><th>Level(QP) [dBuV]</th><th>Line</th><th>Limit(Ave.) [dBuV]</th><th>Limit(QP) [dBuV]</th><th>Margin(Ave.) [dB]</th><th>Margin(QP) [dB]</th></tr><tr><td>0.162</td><td>25</td><td>30.7</td><td>9.8</td><td>34.8</td><td>40.5</td><td>VA</td><td>66</td><td>79</td><td>31.2</td><td>38.5</td></tr><tr><td>0.6341</td><td>31.7</td><td>31.6</td><td>9.9</td><td>41.6</td><td>41.5</td><td>VA</td><td>60</td><td>73</td><td>18.4</td><td>31.5</td></tr><tr><td>19.615</td><td>28.7</td><td>28.7</td><td>10.3</td><td>39</td><td>39</td><td>VA</td><td>60</td><td>73</td><td>21</td><td>34</td></tr></table>											Frequency [MHz]	Meter Reading (Ave.) [dBuV]	Meter Reading (QP) [dBuV]	Factor [dB]	Level(Ave.) [dBuV]	Level(QP) [dBuV]	Line	Limit(Ave.) [dBuV]	Limit(QP) [dBuV]	Margin(Ave.) [dB]	Margin(QP) [dB]	0.162	25	30.7	9.8	34.8	40.5	VA	66	79	31.2	38.5	0.6341	31.7	31.6	9.9	41.6	41.5	VA	60	73	18.4	31.5	19.615	28.7	28.7	10.3	39	39	VA	60	73	21	34
Frequency [MHz]	Meter Reading (Ave.) [dBuV]	Meter Reading (QP) [dBuV]	Factor [dB]	Level(Ave.) [dBuV]	Level(QP) [dBuV]	Line	Limit(Ave.) [dBuV]	Limit(QP) [dBuV]	Margin(Ave.) [dB]	Margin(QP) [dB]																																												
0.162	25	30.7	9.8	34.8	40.5	VA	66	79	31.2	38.5																																												
0.6341	31.7	31.6	9.9	41.6	41.5	VA	60	73	18.4	31.5																																												
19.615	28.7	28.7	10.3	39	39	VA	60	73	21	34																																												
RADIATED EMISSION																																																						
Model Name : SFS104805			Temp. : 25degreeC																																																			
Model No. :			Humi. : 45%																																																			
Serial No. :			Date : 2007/10/12 9:55																																																			
Points : 3			Test Equip. : R3132,ESPC																																																			
Detector : PEAK/QP			Load Line : 100mm																																																			
Polarization : Vertical			Comment : Vo = 5.0V , Io = 2.0A																																																			
Power Supply : DC 48V																																																						
Limit: [CISPR 11] Class A Group 1<3m>																																																						
							<div>Limit(QP) —</div> <div>Horizontal(PEAK) —</div> <div>Vertical(PEAK) —</div> <div>Vertical(QP) x</div>																																															
<table><tr><th>Frequency [MHz]</th><th>MeterReading (QP) [dBuV]</th><th>Ant. Type</th><th>Antenna Factor [dB/m]</th><th>Cable & Preamp [dB]</th><th>Level(QP) [dBuV/m]</th><th>Angle [°]</th><th>Height [cm]</th><th>Polar.</th><th>Limit [dBuV/m]</th><th>Margin [dB]</th></tr><tr><td>31.68</td><td>39.5</td><td>BL</td><td>17.4</td><td>-32.2</td><td>24.7</td><td>98</td><td>102</td><td>Vert.</td><td>50</td><td>25.3</td></tr><tr><td>240.158</td><td>57</td><td>BL</td><td>11.1</td><td>-31.2</td><td>36.9</td><td>215</td><td>132</td><td>Vert.</td><td>57</td><td>20.1</td></tr><tr><td>382.492</td><td>41.9</td><td>BL</td><td>15.3</td><td>-30.7</td><td>26.5</td><td>89</td><td>102</td><td>Vert.</td><td>57</td><td>30.5</td></tr></table>											Frequency [MHz]	MeterReading (QP) [dBuV]	Ant. Type	Antenna Factor [dB/m]	Cable & Preamp [dB]	Level(QP) [dBuV/m]	Angle [°]	Height [cm]	Polar.	Limit [dBuV/m]	Margin [dB]	31.68	39.5	BL	17.4	-32.2	24.7	98	102	Vert.	50	25.3	240.158	57	BL	11.1	-31.2	36.9	215	132	Vert.	57	20.1	382.492	41.9	BL	15.3	-30.7	26.5	89	102	Vert.	57	30.5
Frequency [MHz]	MeterReading (QP) [dBuV]	Ant. Type	Antenna Factor [dB/m]	Cable & Preamp [dB]	Level(QP) [dBuV/m]	Angle [°]	Height [cm]	Polar.	Limit [dBuV/m]	Margin [dB]																																												
31.68	39.5	BL	17.4	-32.2	24.7	98	102	Vert.	50	25.3																																												
240.158	57	BL	11.1	-31.2	36.9	215	132	Vert.	57	20.1																																												
382.492	41.9	BL	15.3	-30.7	26.5	89	102	Vert.	57	30.5																																												

DATA SHEET		Date	12-Oct-07
Model	SFS104805	Temp.	25 degreeC
Test	EMI Line conduction & Radiated emission	Humid.	45 %RH
		Tested by	Y.Miyawaki

1.Conditions

(1)Photograph of Test Set-Up

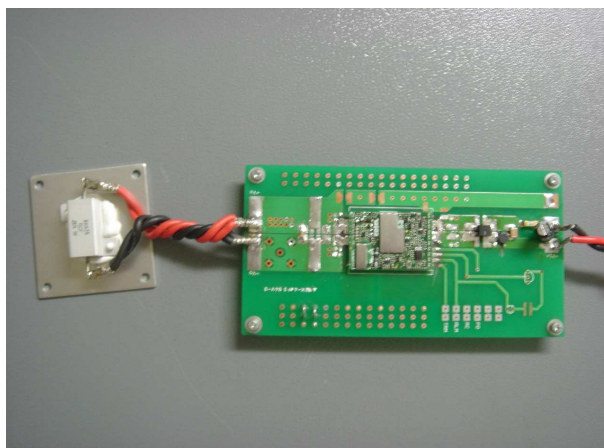
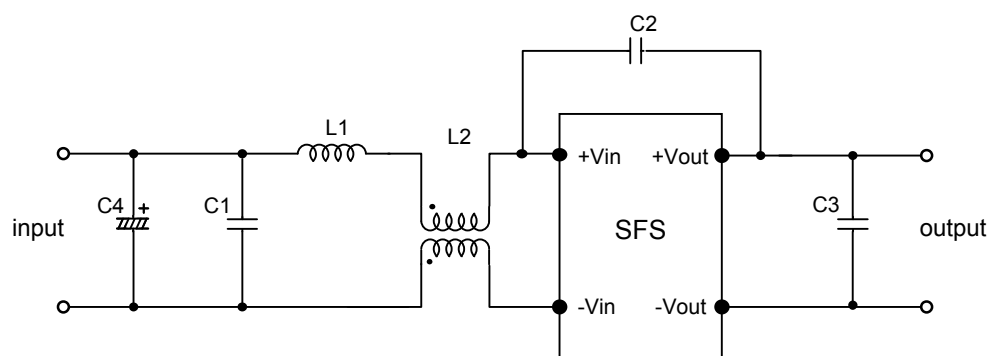


Fig1. Photograph of Test Set-Up

(2)Testing circuitry



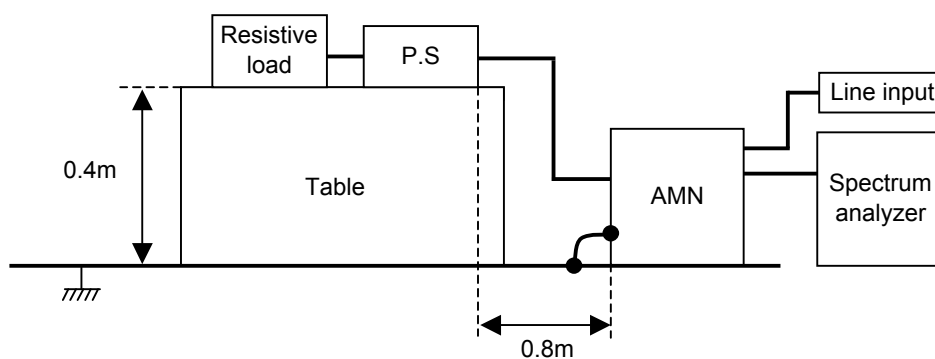
C1: 1 μ F 100V Ceramic capacitor
 C2: 2200pF 630V Ceramic capacitor
 C3: 22 μ F 16V Ceramic capacitor
 C4: 10 μ F 100V Electric capacitor

L1: 1 μ H 2.4A Inductor
 L2: ZJYS51R5-2PT : TDK

Fig2. Testing circuitry

DATA SHEET		Date	12-Oct-07
Model	Circuit used for measurement	Temp.	25 degreeC
Test	EMI Line conduction & Radiated emission	Humid.	45 %RH
		Tested by	Y.Miyawaki

1. Line conduction



2. Radiated emission

