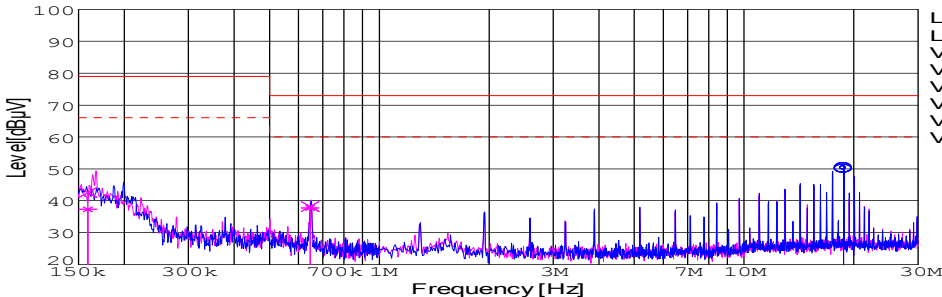
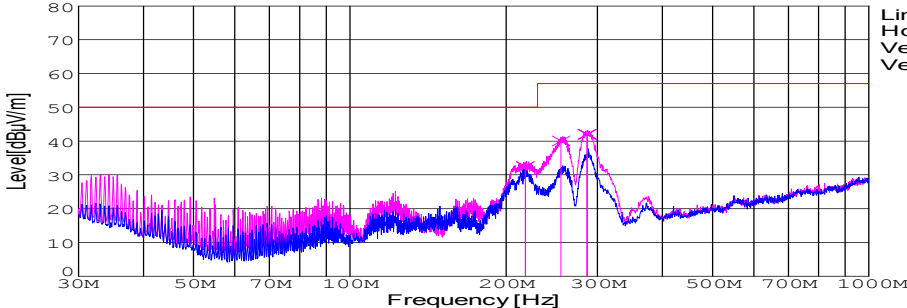


DATA SHEET							Date	12-Oct-07																																														
Model	SFS152415						Temp.	25 degreeC																																														
Test	EMI Line conduction & Radiated emission						Humid.	45 %RH																																														
							Tested by	Y.Miyawaki																																														
LINE CONDUCTION																																																						
Model Name : SFS152415			Temp. : 25degreeC																																																			
Model No. :			Humi. : 45%																																																			
Serial No. :			Date : 2007/10/12 15:42																																																			
Points : 3			Test Equip. : R3132,ESPC																																																			
Detector : PEAK/QP/Ave.			Load Line : 100mm																																																			
Line Mode : VA/VB			Comment : Vo = 15.0V , Io = 1.0A																																																			
Power Supply : DC 24V																																																						
Limit1: [CISPR Pub11] Class A Gr.1(QP)																																																						
Limit2: [CISPR Pub11] Class A Gr.1(Ave.)																																																						
							Limit1(QP) Limit2(Ave.) VA(PEAK) VB(PEAK) VA(QP) VA(Ave.) VB(QP) VB(Ave.)																																															
<table><tr><th>Frequency [MHz]</th><th>Meter Reading (Ave.) [dBuV]</th><th>Meter Reading (QP) [dBuV]</th><th>Factor [dB]</th><th>Level(Ave.) [dBuV]</th><th>Level(QP) [dBuV]</th><th>Line</th><th>Limit(Ave.) [dBuV]</th><th>Limit(QP) [dBuV]</th><th>Margin(Ave.) [dB]</th><th>Margin(QP) [dB]</th></tr><tr><td>18.7514</td><td>39.9</td><td>39.5</td><td>10.3</td><td>50.2</td><td>49.8</td><td>VA</td><td>60</td><td>73</td><td>9.8</td><td>23.2</td></tr><tr><td>0.159</td><td>27.5</td><td>32.8</td><td>9.8</td><td>37.3</td><td>42.6</td><td>VB</td><td>66</td><td>79</td><td>28.7</td><td>36.4</td></tr><tr><td>0.6467</td><td>27.9</td><td>28.3</td><td>9.9</td><td>37.8</td><td>38.2</td><td>VB</td><td>60</td><td>73</td><td>22.2</td><td>34.8</td></tr></table>											Frequency [MHz]	Meter Reading (Ave.) [dBuV]	Meter Reading (QP) [dBuV]	Factor [dB]	Level(Ave.) [dBuV]	Level(QP) [dBuV]	Line	Limit(Ave.) [dBuV]	Limit(QP) [dBuV]	Margin(Ave.) [dB]	Margin(QP) [dB]	18.7514	39.9	39.5	10.3	50.2	49.8	VA	60	73	9.8	23.2	0.159	27.5	32.8	9.8	37.3	42.6	VB	66	79	28.7	36.4	0.6467	27.9	28.3	9.9	37.8	38.2	VB	60	73	22.2	34.8
Frequency [MHz]	Meter Reading (Ave.) [dBuV]	Meter Reading (QP) [dBuV]	Factor [dB]	Level(Ave.) [dBuV]	Level(QP) [dBuV]	Line	Limit(Ave.) [dBuV]	Limit(QP) [dBuV]	Margin(Ave.) [dB]	Margin(QP) [dB]																																												
18.7514	39.9	39.5	10.3	50.2	49.8	VA	60	73	9.8	23.2																																												
0.159	27.5	32.8	9.8	37.3	42.6	VB	66	79	28.7	36.4																																												
0.6467	27.9	28.3	9.9	37.8	38.2	VB	60	73	22.2	34.8																																												
RADIATED EMISSION																																																						
Model Name : SFS152415			Temp. : 25degreeC																																																			
Model No. :			Humi. : 45%																																																			
Serial No. :			Date : 2007/10/12 15:26																																																			
Points : 3			Test Equip. : R3132,ESPC																																																			
Detector : PEAK/QP			Load Line : 100mm																																																			
Polarization : Vertical			Comment : Vo = 15.0V , Io = 1.0A																																																			
Power Supply : DC 24V																																																						
Limit: [CISPR 11] Class A Group 1<3m>																																																						
							Limit(QP) Horizontal(PEAK) Vertical(PEAK) Vertical(QP)																																															
<table><tr><th>Frequency [MHz]</th><th>Meter Reading (QP) [dBuV]</th><th>Ant. Type</th><th>Antenna Factor [dB/m]</th><th>Cable &amp; Preamp [dB]</th><th>Level(QP) [dBuV/m]</th><th>Angle [°]</th><th>Height [cm]</th><th>Polar.</th><th>Limit [dBuV/m]</th><th>Margin [dB]</th></tr><tr><td>217.685</td><td>54.8</td><td>BL</td><td>8.9</td><td>-31.2</td><td>32.5</td><td>205</td><td>137</td><td>Vert.</td><td>50</td><td>17.5</td></tr><tr><td>255.264</td><td>58</td><td>BL</td><td>13.1</td><td>-31.1</td><td>40</td><td>232</td><td>145</td><td>Vert.</td><td>57</td><td>17</td></tr><tr><td>286.403</td><td>60.3</td><td>BL</td><td>12.7</td><td>-31</td><td>42</td><td>214</td><td>111</td><td>Vert.</td><td>57</td><td>15</td></tr></table>											Frequency [MHz]	Meter Reading (QP) [dBuV]	Ant. Type	Antenna Factor [dB/m]	Cable & Preamp [dB]	Level(QP) [dBuV/m]	Angle [°]	Height [cm]	Polar.	Limit [dBuV/m]	Margin [dB]	217.685	54.8	BL	8.9	-31.2	32.5	205	137	Vert.	50	17.5	255.264	58	BL	13.1	-31.1	40	232	145	Vert.	57	17	286.403	60.3	BL	12.7	-31	42	214	111	Vert.	57	15
Frequency [MHz]	Meter Reading (QP) [dBuV]	Ant. Type	Antenna Factor [dB/m]	Cable & Preamp [dB]	Level(QP) [dBuV/m]	Angle [°]	Height [cm]	Polar.	Limit [dBuV/m]	Margin [dB]																																												
217.685	54.8	BL	8.9	-31.2	32.5	205	137	Vert.	50	17.5																																												
255.264	58	BL	13.1	-31.1	40	232	145	Vert.	57	17																																												
286.403	60.3	BL	12.7	-31	42	214	111	Vert.	57	15																																												

DATA SHEET		Date	12-Oct-07
Model	SFS152415	Temp.	25 degreeC
Test	EMI Line conduction & Radiated emission	Humid.	45 %RH
		Tested by	Y.Miyawaki

**1.Conditions**

**(1)Photograph of Test Set-Up**

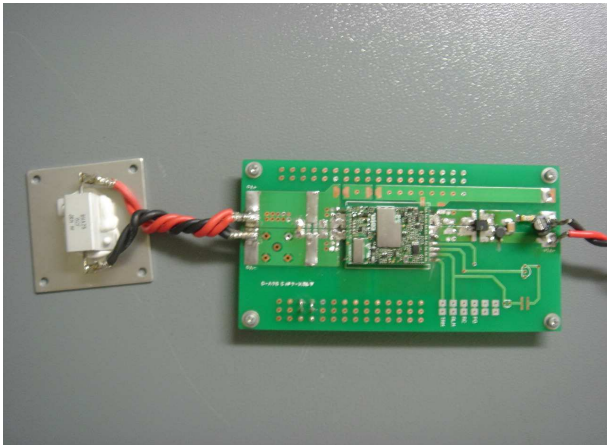
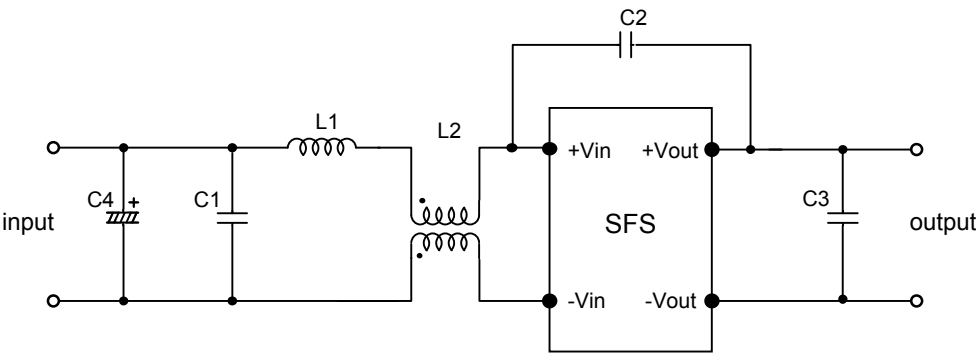


Fig1. Photograph of Test Set-Up

**(2)Testing circuitry**



- C1: 1 $\mu$ F 100V Ceramic capacitor

C2: 2200pF 630V Ceramic capacitor

C3: 0.1 $\mu$ F 50V Ceramic capacitor

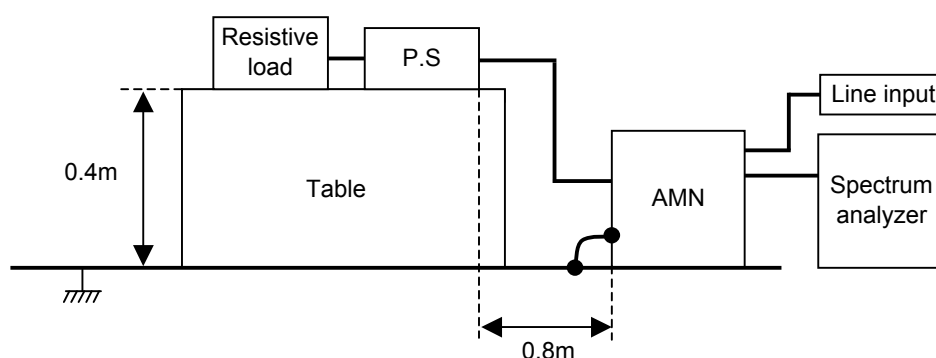
C4: 33 $\mu$ F 100V Electric capacitor
- L1: 1 $\mu$ H 2.4A Inductor

L2: ZJYS51R5-2PT : TDK

Fig2. Testing circuitry

DATA SHEET		Date	12-Oct-07
Model	Circuit used for measurement	Temp.	25 degreeC
Test	EMI Line conduction & Radiated emission	Humid.	45 %RH
		Tested by	Y.Miyawaki

## 1. Line conduction



## 2. Radiated emission

