

DATA SHEET							Date	10-Oct-07																																														
Model	SFS20481R5						Temp.	25 degreeC																																														
Test	EMI Line conduction & Radiated emission						Humid.	45 %RH																																														
							Tested by	Y.Miyawaki																																														
LINE CONDUCTION																																																						
Model Name			SFS20481R5		Temp.		25degreeC																																															
Model No.					Humi.		45%																																															
Serial No.					Date		2007/10/10 13:37																																															
Points			3		Test Equip.		R3132,ESPC																																															
Detector			PEAK/QP/Ave.		Load Line		100mm																																															
Line Mode			VA/VB		Comment		Vo = 1.5V , Io = 9.0A																																															
Power Supply			DC 48V																																																			
Limit1: [CISPR Pub11]			Class A Gr.1(QP)																																																			
Limit2: [CISPR Pub11]			Class A Gr.1(Ave.)																																																			
							Limit1(QP) Limit2(Ave.) VA(PEAK) VB(PEAK) VA(QP) VA(Ave.) VB(QP) VB(Ave.)																																															
<table><tr><th>Frequency [MHz]</th><th>Meter Reading (Ave.) [dBuV]</th><th>Meter Reading (QP) [dBuV]</th><th>Factor [dB]</th><th>Level(Ave.) [dBuV]</th><th>Level(QP) [dBuV]</th><th>Line</th><th>Limit(Ave.) [dBuV]</th><th>Limit(QP) [dBuV]</th><th>Margin(Ave.) [dB]</th><th>Margin(QP) [dB]</th></tr><tr><td>19.0263</td><td>33</td><td>32.7</td><td>10.3</td><td>43.3</td><td>43</td><td>VA</td><td>60</td><td>73</td><td>16.7</td><td>30</td></tr><tr><td>0.163</td><td>30.1</td><td>35.9</td><td>9.8</td><td>39.9</td><td>45.7</td><td>VB</td><td>66</td><td>79</td><td>26.1</td><td>33.3</td></tr><tr><td>0.6348</td><td>30.9</td><td>31</td><td>9.9</td><td>40.8</td><td>40.9</td><td>VB</td><td>60</td><td>73</td><td>19.2</td><td>32.1</td></tr></table>											Frequency [MHz]	Meter Reading (Ave.) [dBuV]	Meter Reading (QP) [dBuV]	Factor [dB]	Level(Ave.) [dBuV]	Level(QP) [dBuV]	Line	Limit(Ave.) [dBuV]	Limit(QP) [dBuV]	Margin(Ave.) [dB]	Margin(QP) [dB]	19.0263	33	32.7	10.3	43.3	43	VA	60	73	16.7	30	0.163	30.1	35.9	9.8	39.9	45.7	VB	66	79	26.1	33.3	0.6348	30.9	31	9.9	40.8	40.9	VB	60	73	19.2	32.1
Frequency [MHz]	Meter Reading (Ave.) [dBuV]	Meter Reading (QP) [dBuV]	Factor [dB]	Level(Ave.) [dBuV]	Level(QP) [dBuV]	Line	Limit(Ave.) [dBuV]	Limit(QP) [dBuV]	Margin(Ave.) [dB]	Margin(QP) [dB]																																												
19.0263	33	32.7	10.3	43.3	43	VA	60	73	16.7	30																																												
0.163	30.1	35.9	9.8	39.9	45.7	VB	66	79	26.1	33.3																																												
0.6348	30.9	31	9.9	40.8	40.9	VB	60	73	19.2	32.1																																												
RADIATED EMISSION																																																						
Model Name			SFS20481R5		Temp.		25degreeC																																															
Model No.					Humi.		45%																																															
Serial No.					Date		2007/10/10 13:55																																															
Points			3		Test Equip.		R3132,ESPC																																															
Detector			PEAK/QP		Load Line		100mm																																															
Polarization			Vertical		Comment		Vo = 1.5V , Io = 9.0A																																															
Power Supply			DC 48V																																																			
Limit: [CISPR 11] Class A Group 1<3m>																																																						
							Limit(QP) Horizontal(PEAK) Vertical(PEAK) Vertical(QP)																																															
<table><tr><th>Frequency [MHz]</th><th>MeterReading (QP) [dBuV]</th><th>Ant. Type</th><th>Antenna Factor [dB/m]</th><th>Cable &amp; Preamp [dB]</th><th>Level(QP) [dBuV/m]</th><th>Angle [°]</th><th>Height [cm]</th><th>Polar.</th><th>Limit [dBuV/m]</th><th>Margin [dB]</th></tr><tr><td>30.502</td><td>40.6</td><td>BL</td><td>18</td><td>-32.3</td><td>26.3</td><td>88</td><td>143</td><td>Vert.</td><td>50</td><td>23.7</td></tr><tr><td>103.607</td><td>49.6</td><td>BL</td><td>10.1</td><td>-31.7</td><td>28</td><td>75</td><td>117</td><td>Vert.</td><td>50</td><td>22</td></tr><tr><td>256.158</td><td>57.2</td><td>BL</td><td>13.2</td><td>-31.1</td><td>39.3</td><td>238</td><td>132</td><td>Vert.</td><td>57</td><td>17.7</td></tr></table>											Frequency [MHz]	MeterReading (QP) [dBuV]	Ant. Type	Antenna Factor [dB/m]	Cable & Preamp [dB]	Level(QP) [dBuV/m]	Angle [°]	Height [cm]	Polar.	Limit [dBuV/m]	Margin [dB]	30.502	40.6	BL	18	-32.3	26.3	88	143	Vert.	50	23.7	103.607	49.6	BL	10.1	-31.7	28	75	117	Vert.	50	22	256.158	57.2	BL	13.2	-31.1	39.3	238	132	Vert.	57	17.7
Frequency [MHz]	MeterReading (QP) [dBuV]	Ant. Type	Antenna Factor [dB/m]	Cable & Preamp [dB]	Level(QP) [dBuV/m]	Angle [°]	Height [cm]	Polar.	Limit [dBuV/m]	Margin [dB]																																												
30.502	40.6	BL	18	-32.3	26.3	88	143	Vert.	50	23.7																																												
103.607	49.6	BL	10.1	-31.7	28	75	117	Vert.	50	22																																												
256.158	57.2	BL	13.2	-31.1	39.3	238	132	Vert.	57	17.7																																												

DATA SHEET		Date	10-Oct-07
Model	SFS20481R5	Temp.	25 degreeC
Test	EMI Line conduction & Radiated emission	Humid.	45 %RH
		Tested by	Y.Miyawaki

1.Conditions

(1)Photograph of Test Set-Up

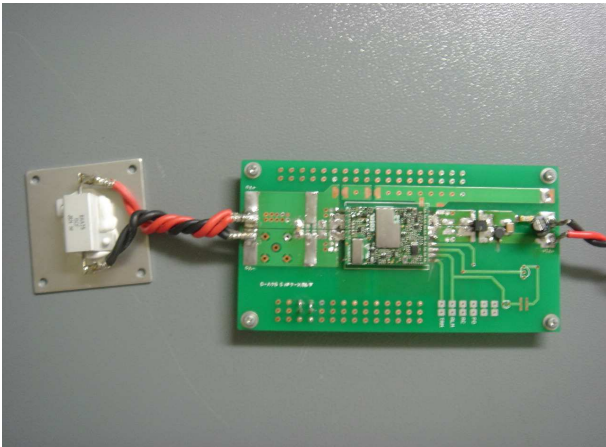
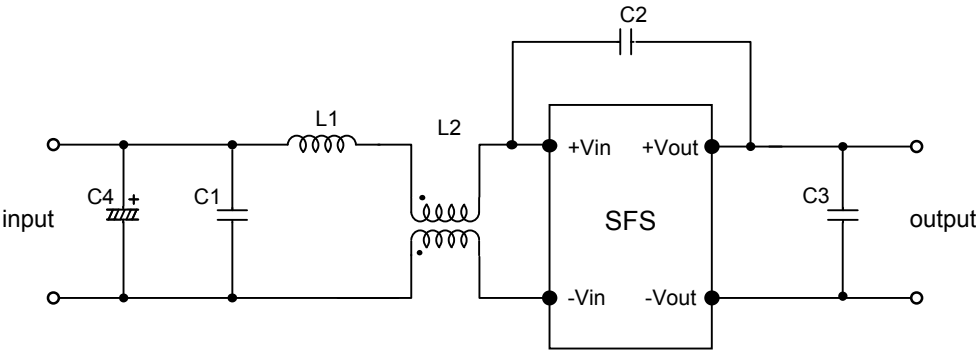


Fig1. Photograph of Test Set-Up

(2)Testing circuitry



- C1: 1 $\mu$ F 100V Ceramic capacitor

C2: 2200pF 630V Ceramic capacitor

C3: 22 $\mu$ F 16V Ceramic capacitor

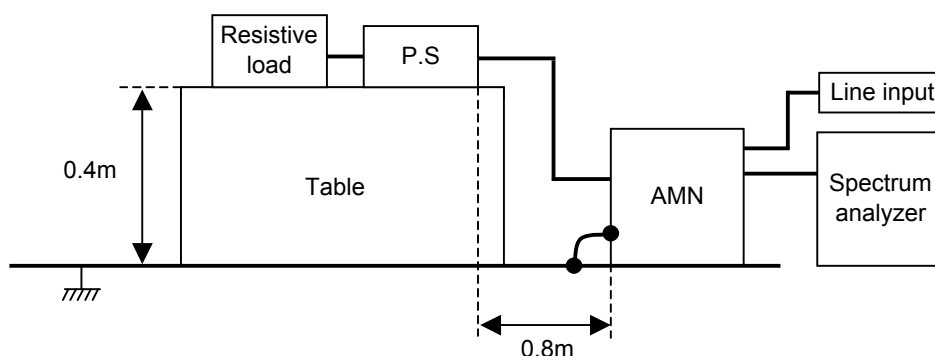
C4: 10 $\mu$ F 100V Electric capacitor
- L1: 1 $\mu$ H 2.4A Inductor

L2: ZJYS51R5-2PT : TDK

Fig2. Testing circuitry

DATA SHEET		Date	10-Oct-07
Model	Circuit used for measurement	Temp.	25 degreeC
Test	EMI Line conduction & Radiated emission	Humid.	45 %RH
		Tested by	Y.Miyawaki

## 1. Line conduction



## 2. Radiated emission

