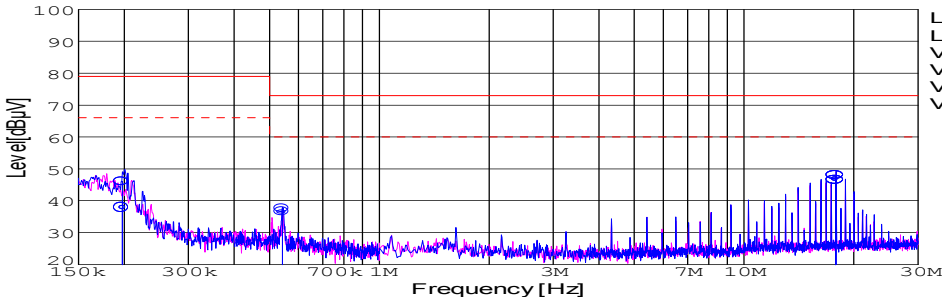
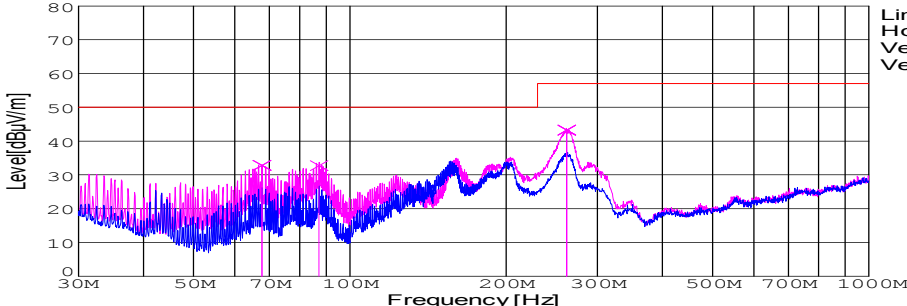


DATA SHEET							Date	09-Oct-07																																														
Model	SFS302405						Temp.	25 degreeC																																														
Test	EMI Line conduction & Radiated emission						Humid.	45 %RH																																														
							Tested by	Y.Miyawaki																																														
LINE CONDUCTION																																																						
Model Name : SFS302405			Temp. : 25degreeC																																																			
Model No. :			Humi. : 45%																																																			
Serial No. :			Date : 2007/10/9 14:39																																																			
Points : 3			Test Equip. : R3132,ESPC																																																			
Detector : PEAK/QP/Ave.			Load Line : 100mm																																																			
Line Mode : VA			Comment : Vo = 5.0V , Io = 6.0A																																																			
Power Supply : DC 24V																																																						
Limit1: [CISPR Pub11] Class A Gr.1(QP)																																																						
Limit2: [CISPR Pub11] Class A Gr.1(Ave.)																																																						
							Limit1(QP) Limit2(Ave.) VA(PEAK) VB(PEAK) VA(QP) VA(Ave.)																																															
<table><tr><th>Frequency [MHz]</th><th>Meter Reading (Ave.) [dBuV]</th><th>Meter Reading (QP) [dBuV]</th><th>Factor [dB]</th><th>Level(Ave.) [dBuV]</th><th>Level(QP) [dBuV]</th><th>Line</th><th>Limit(Ave.) [dBuV]</th><th>Limit(QP) [dBuV]</th><th>Margin(Ave.) [dB]</th><th>Margin(QP) [dB]</th></tr><tr><td>0.1978</td><td>28</td><td>36.3</td><td>9.8</td><td>37.8</td><td>46.1</td><td>VA</td><td>66</td><td>79</td><td>28.2</td><td>32.9</td></tr><tr><td>0.5425</td><td>26.6</td><td>27.6</td><td>9.9</td><td>36.5</td><td>37.5</td><td>VA</td><td>60</td><td>73</td><td>23.5</td><td>35.5</td></tr><tr><td>17.8463</td><td>36.4</td><td>37.7</td><td>10.2</td><td>46.6</td><td>47.9</td><td>VA</td><td>60</td><td>73</td><td>13.4</td><td>25.1</td></tr></table>											Frequency [MHz]	Meter Reading (Ave.) [dBuV]	Meter Reading (QP) [dBuV]	Factor [dB]	Level(Ave.) [dBuV]	Level(QP) [dBuV]	Line	Limit(Ave.) [dBuV]	Limit(QP) [dBuV]	Margin(Ave.) [dB]	Margin(QP) [dB]	0.1978	28	36.3	9.8	37.8	46.1	VA	66	79	28.2	32.9	0.5425	26.6	27.6	9.9	36.5	37.5	VA	60	73	23.5	35.5	17.8463	36.4	37.7	10.2	46.6	47.9	VA	60	73	13.4	25.1
Frequency [MHz]	Meter Reading (Ave.) [dBuV]	Meter Reading (QP) [dBuV]	Factor [dB]	Level(Ave.) [dBuV]	Level(QP) [dBuV]	Line	Limit(Ave.) [dBuV]	Limit(QP) [dBuV]	Margin(Ave.) [dB]	Margin(QP) [dB]																																												
0.1978	28	36.3	9.8	37.8	46.1	VA	66	79	28.2	32.9																																												
0.5425	26.6	27.6	9.9	36.5	37.5	VA	60	73	23.5	35.5																																												
17.8463	36.4	37.7	10.2	46.6	47.9	VA	60	73	13.4	25.1																																												
RADIATED EMISSION																																																						
Model Name : SFS302405			Temp. : 25degreeC																																																			
Model No. :			Humi. : 45%																																																			
Serial No. :			Date : 2007/10/9 14:51																																																			
Points : 3			Test Equip. : R3132,ESPC																																																			
Detector : PEAK/QP			Load Line : 100mm																																																			
Polarization : Vertical			Comment : Vo = 5.0V , Io = 6.0A																																																			
Power Supply : DC 24V																																																						
Limit: [CISPR 11] Class A Group 1<3m>																																																						
							Limit(QP) Horizontal(PEAK) Vertical(PEAK) Vertical(QP)																																															
<table><tr><th>Frequency [MHz]</th><th>MeterReading (QP) [dBuV]</th><th>Ant. Type</th><th>Antenna Factor [dB/m]</th><th>Cable & Preamp [dB]</th><th>Level(QP) [dBuV/m]</th><th>Angle [°]</th><th>Height [cm]</th><th>Polar.</th><th>Limit [dBuV/m]</th><th>Margin [dB]</th></tr><tr><td>67.72</td><td>59.7</td><td>BL</td><td>5.1</td><td>-32</td><td>32.8</td><td>178</td><td>115</td><td>Vert.</td><td>50</td><td>17.2</td></tr><tr><td>87.229</td><td>56.4</td><td>BL</td><td>8.2</td><td>-31.9</td><td>32.7</td><td>354</td><td>112</td><td>Vert.</td><td>50</td><td>17.3</td></tr><tr><td>261.703</td><td>60.8</td><td>BL</td><td>13.5</td><td>-31.1</td><td>43.2</td><td>233</td><td>146</td><td>Vert.</td><td>57</td><td>13.8</td></tr></table>											Frequency [MHz]	MeterReading (QP) [dBuV]	Ant. Type	Antenna Factor [dB/m]	Cable & Preamp [dB]	Level(QP) [dBuV/m]	Angle [°]	Height [cm]	Polar.	Limit [dBuV/m]	Margin [dB]	67.72	59.7	BL	5.1	-32	32.8	178	115	Vert.	50	17.2	87.229	56.4	BL	8.2	-31.9	32.7	354	112	Vert.	50	17.3	261.703	60.8	BL	13.5	-31.1	43.2	233	146	Vert.	57	13.8
Frequency [MHz]	MeterReading (QP) [dBuV]	Ant. Type	Antenna Factor [dB/m]	Cable & Preamp [dB]	Level(QP) [dBuV/m]	Angle [°]	Height [cm]	Polar.	Limit [dBuV/m]	Margin [dB]																																												
67.72	59.7	BL	5.1	-32	32.8	178	115	Vert.	50	17.2																																												
87.229	56.4	BL	8.2	-31.9	32.7	354	112	Vert.	50	17.3																																												
261.703	60.8	BL	13.5	-31.1	43.2	233	146	Vert.	57	13.8																																												

DATA SHEET		Date	09-Oct-07
Model	SFS302405	Temp.	25 degreeC
Test	EMI Line conduction & Radiated emission	Humid.	45 %RH
		Tested by	Y.Miyawaki

1.Conditions

(1)Photograph of Test Set-Up

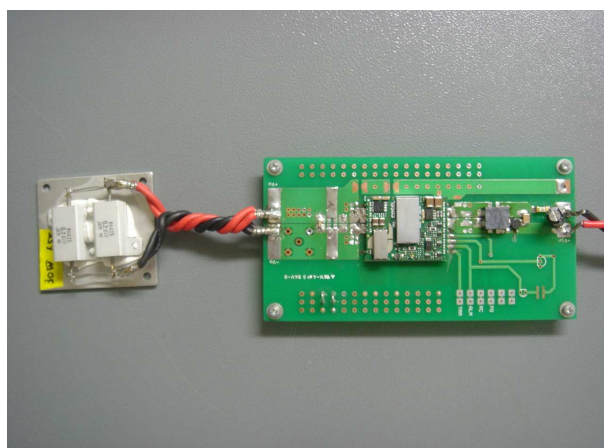
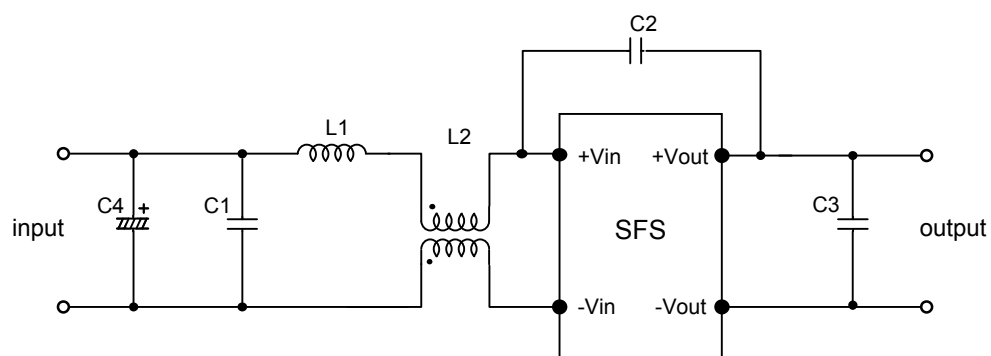


Fig1. Photograph of Test Set-Up

(2)Testing circuitry



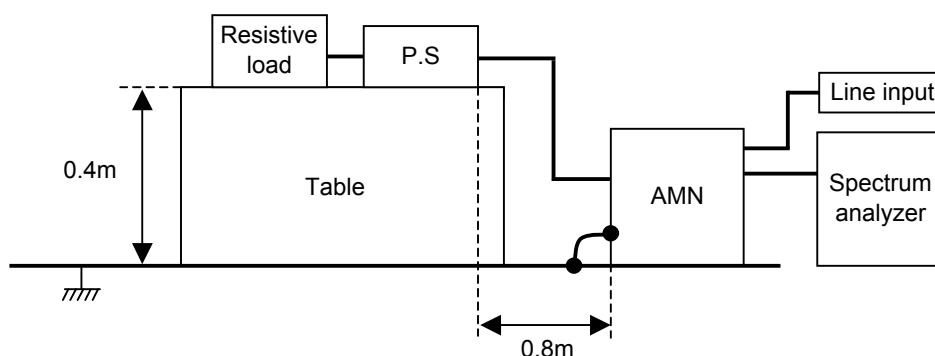
C1: 1 μ F 100V Ceramic capacitor
 C2: 2200pF 630V Ceramic capacitor
 C3: 22 μ F 16V Ceramic capacitor
 C4: 68 μ F 80V Electric capacitor

L1: 1 μ H 2.4A Inductor
 L2: ACM1211-102-2PL : TDK

Fig2. Testing circuitry

DATA SHEET		Date	09-Oct-07
Model	Circuit used for measurement	Temp.	25 degreeC
Test	EMI Line conduction & Radiated emission	Humid.	45 %RH
		Tested by	Y.Miyawaki

1. Line conduction



2. Radiated emission

