

DATA SHEET							Date	09-Oct-07																																														
Model	SFS30242R5						Temp.	25 degreeC																																														
Test	EMI Line conduction & Radiated emission						Humid.	45 %RH																																														
							Tested by	Y.Miyawaki																																														
LINE CONDUCTION																																																						
Model Name : SFS30242R5				Temp. : 25degreeC																																																		
Model No. :				Humi. : 45%																																																		
Serial No. :				Date : 2007/10/9 16:02																																																		
Points : 3				Test Equip. : R3132,ESPC																																																		
Detector : PEAK/QP/Ave.				Load Line : 100mm																																																		
Line Mode : VA/VB				Comment : Vo = 2.5V , Io = 9.0A																																																		
Power Supply : DC 24V																																																						
Limit1: [CISPR Pub11] Class A Gr.1(QP)																																																						
Limit2: [CISPR Pub11] Class A Gr.1(Ave.)																																																						
							Limit1(QP) Limit2(Ave.) VA(PEAK) VB(PEAK) VA(QP) VA(Ave.) VB(QP) VB(Ave.)																																															
<table><tr><th>Frequency [MHz]</th><th>Meter Reading (Ave.) [dBuV]</th><th>Meter Reading (QP) [dBuV]</th><th>Factor [dB]</th><th>Level(Ave.) [dBuV]</th><th>Level(QP) [dBuV]</th><th>Line</th><th>Limit(Ave.) [dBuV]</th><th>Limit(QP) [dBuV]</th><th>Margin(Ave.) [dB]</th><th>Margin(QP) [dB]</th></tr><tr><td>0.4988</td><td>25.7</td><td>27.5</td><td>9.9</td><td>35.6</td><td>37.4</td><td>VA</td><td>66</td><td>79</td><td>30.4</td><td>41.6</td></tr><tr><td>18.4743</td><td>33.9</td><td>35.8</td><td>10.2</td><td>44.1</td><td>46</td><td>VA</td><td>60</td><td>73</td><td>15.9</td><td>27</td></tr><tr><td>0.1771</td><td>29</td><td>34.8</td><td>9.8</td><td>38.8</td><td>44.6</td><td>VB</td><td>66</td><td>79</td><td>27.2</td><td>34.4</td></tr></table>											Frequency [MHz]	Meter Reading (Ave.) [dBuV]	Meter Reading (QP) [dBuV]	Factor [dB]	Level(Ave.) [dBuV]	Level(QP) [dBuV]	Line	Limit(Ave.) [dBuV]	Limit(QP) [dBuV]	Margin(Ave.) [dB]	Margin(QP) [dB]	0.4988	25.7	27.5	9.9	35.6	37.4	VA	66	79	30.4	41.6	18.4743	33.9	35.8	10.2	44.1	46	VA	60	73	15.9	27	0.1771	29	34.8	9.8	38.8	44.6	VB	66	79	27.2	34.4
Frequency [MHz]	Meter Reading (Ave.) [dBuV]	Meter Reading (QP) [dBuV]	Factor [dB]	Level(Ave.) [dBuV]	Level(QP) [dBuV]	Line	Limit(Ave.) [dBuV]	Limit(QP) [dBuV]	Margin(Ave.) [dB]	Margin(QP) [dB]																																												
0.4988	25.7	27.5	9.9	35.6	37.4	VA	66	79	30.4	41.6																																												
18.4743	33.9	35.8	10.2	44.1	46	VA	60	73	15.9	27																																												
0.1771	29	34.8	9.8	38.8	44.6	VB	66	79	27.2	34.4																																												
RADIATED EMISSION																																																						
Model Name : SFS30242R5				Temp. : 25degreeC																																																		
Model No. :				Humi. : 45%																																																		
Serial No. :				Date : 2007/10/9 16:17																																																		
Points : 3				Test Equip. : R3132,ESPC																																																		
Detector : PEAK/QP				Load Line : 100mm																																																		
Polarization : Hori. & Vert.				Comment : Vo = 2.5V , Io = 9.0A																																																		
Power Supply : DC 24V																																																						
Limit: [CISPR 11] Class A Group 1<3m>																																																						
							Limit(QP) Horizontal(PEAK) Vertical(PEAK) Horizontal(QP) Vertical(QP)																																															
<table><tr><th>Frequency [MHz]</th><th>MeterReading (QP) [dBuV]</th><th>Ant. Type</th><th>Antenna Factor [dB/m]</th><th>Cable & Preamp [dB]</th><th>Level(QP) [dBuV/m]</th><th>Angle [°]</th><th>Height [cm]</th><th>Polar.</th><th>Limit [dBuV/m]</th><th>Margin [dB]</th></tr><tr><td>153.982</td><td>54.7</td><td>BL</td><td>10.3</td><td>-31.5</td><td>33.5</td><td>274</td><td>160</td><td>Hori.</td><td>50</td><td>16.5</td></tr><tr><td>77.979</td><td>58.8</td><td>BL</td><td>6.8</td><td>-31.9</td><td>33.7</td><td>0</td><td>124</td><td>Vert.</td><td>50</td><td>16.3</td></tr><tr><td>260.893</td><td>58.2</td><td>BL</td><td>13.6</td><td>-31.1</td><td>40.7</td><td>113</td><td>124</td><td>Vert.</td><td>57</td><td>16.3</td></tr></table>											Frequency [MHz]	MeterReading (QP) [dBuV]	Ant. Type	Antenna Factor [dB/m]	Cable & Preamp [dB]	Level(QP) [dBuV/m]	Angle [°]	Height [cm]	Polar.	Limit [dBuV/m]	Margin [dB]	153.982	54.7	BL	10.3	-31.5	33.5	274	160	Hori.	50	16.5	77.979	58.8	BL	6.8	-31.9	33.7	0	124	Vert.	50	16.3	260.893	58.2	BL	13.6	-31.1	40.7	113	124	Vert.	57	16.3
Frequency [MHz]	MeterReading (QP) [dBuV]	Ant. Type	Antenna Factor [dB/m]	Cable & Preamp [dB]	Level(QP) [dBuV/m]	Angle [°]	Height [cm]	Polar.	Limit [dBuV/m]	Margin [dB]																																												
153.982	54.7	BL	10.3	-31.5	33.5	274	160	Hori.	50	16.5																																												
77.979	58.8	BL	6.8	-31.9	33.7	0	124	Vert.	50	16.3																																												
260.893	58.2	BL	13.6	-31.1	40.7	113	124	Vert.	57	16.3																																												

DATA SHEET		Date	09-Oct-07
Model	SFS30242R5	Temp.	25 degreeC
Test	EMI Line conduction & Radiated emission	Humid.	45 %RH
		Tested by	Y.Miyawaki

1.Conditions

(1)Photograph of Test Set-Up

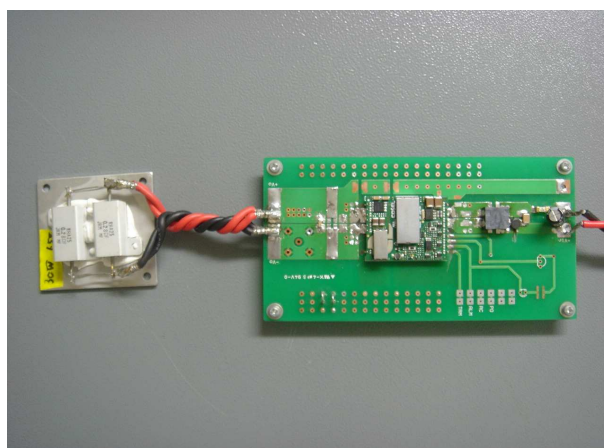
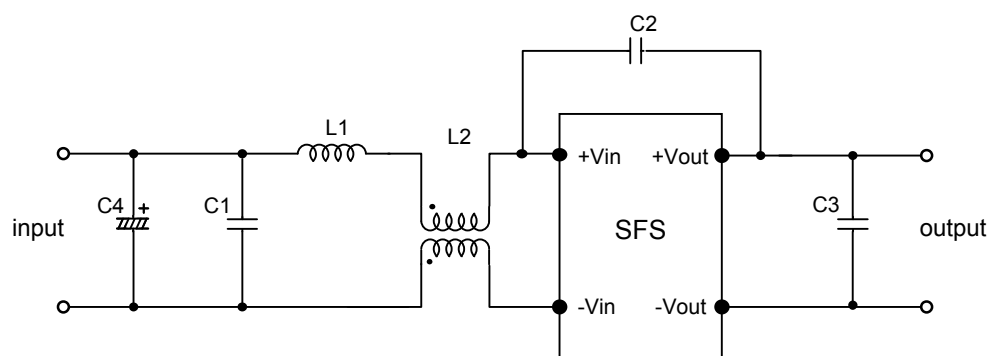


Fig1. Photograph of Test Set-Up

(2)Testing circuitry



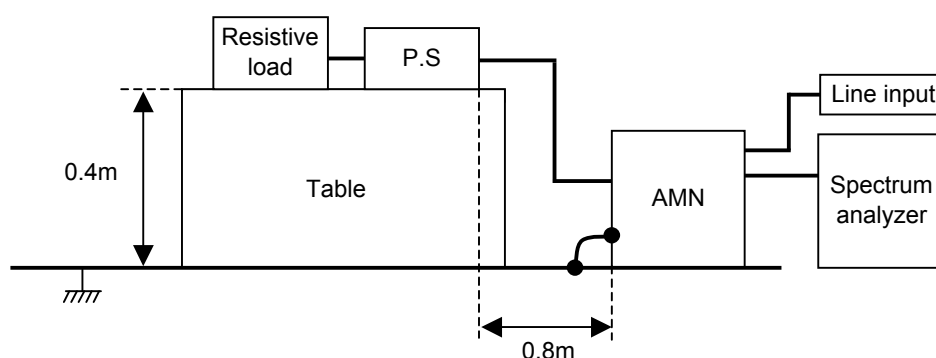
C1: 1 μ F 100V Ceramic capacitor
C2: 2200pF 630V Ceramic capacitor
C3: 22 μ F 16V Ceramic capacitor
C4: 68 μ F 80V Electric capacitor

L1: 1 μ H 2.4A Inductor
L2: ACM1211-102-2PL : TDK

Fig2. Testing circuitry

DATA SHEET		Date	09-Oct-07
Model	Circuit used for measurement	Temp.	25 degreeC
Test	EMI Line conduction & Radiated emission	Humid.	45 %RH
		Tested by	Y.Miyawaki

1. Line conduction



2. Radiated emission

