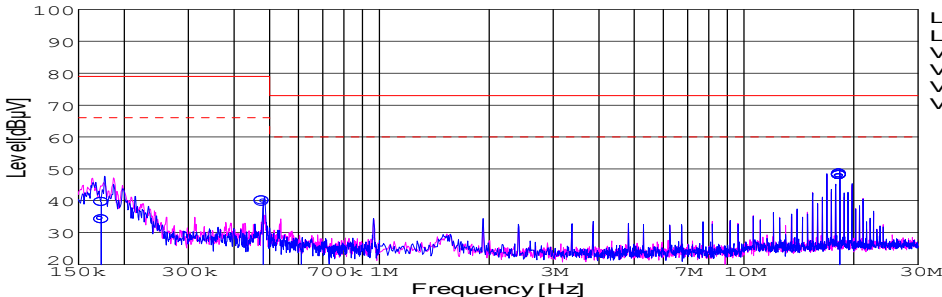
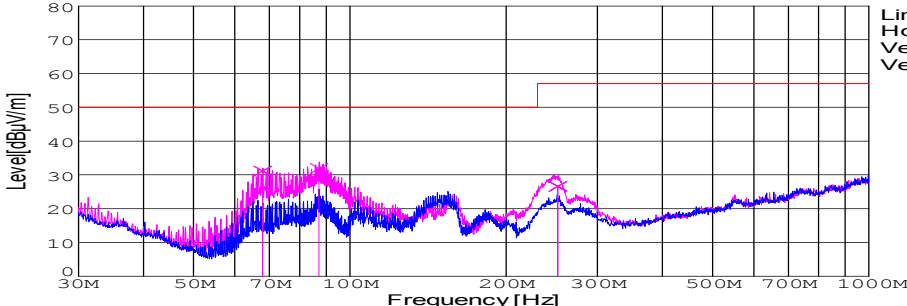


DATA SHEET							Date	04-Oct-07		
Model	SFS30481R2						Temp.	25 degreeC		
Test	EMI Line conduction & Radiated emission						Humid.	45 %RH		
							Tested by	Y.Miyawaki		
LINE CONDUCTION										
Model Name			SFS30481R2		Temp.		25degreeC			
Model No.					Humi.		45%			
Serial No.					Date		2007/10/4 13:41			
Points			3		Test Equip.		R3132,ESPC			
Detector			PEAK/QP/Ave.		Load Line		100mm			
Line Mode			VA		Comment		Vo = 1.2V , Io = 10.4A			
Power Supply			DC 48V							
Limit1: [CISPR Pub11]			Class A Gr.1(QP)							
Limit2: [CISPR Pub11]			Class A Gr.1(Ave.)							
							<div>Limit1(QP)</div> <div>Limit2(Ave.)</div> <div>VA(PEAK)</div> <div>VB(PEAK)</div> <div>VA(QP)</div> <div>VA(Ave.)</div>			
Frequency [MHz]	Meter Reading (Ave.) [dBuV]	Meter Reading (QP) [dBuV]	Factor [dB]	Level(Ave.) [dBuV]	Level(QP) [dBuV]	Line	Limit(Ave.) [dBuV]	Limit(QP) [dBuV]	Margin(Ave.) [dB]	Margin(QP) [dB]
0.1731	24.4	29.7	9.8	34.2	39.5	VA	66	79	31.8	39.5
0.4814	29.9	30.2	9.9	39.8	40.1	VA	66	79	26.2	38.9
18.2856	37.8	38	10.2	48	48.2	VA	60	73	12	24.8
RADIATED EMISSION										
Model Name			SFS30481R2		Temp.		25degreeC			
Model No.					Humi.		45%			
Serial No.					Date		2007/10/4 13:28			
Points			3		Test Equip.		R3132,ESPC			
Detector			PEAK/QP		Load Line		100mm			
Polarization			Vertical		Comment		Vo = 1.2V , Io = 10.4A			
Power Supply			DC 48V							
Limit: [CISPR 11]			Class A Group 1<3m>							
							<div>Limit(QP)</div> <div>Horizontal(PEAK)</div> <div>Vertical(PEAK)</div> <div>Vertical(QP)</div>			
Frequency [MHz]	MeterReading (QP) [dBuV]	Ant. Type	Antenna Factor [dB/m]	Cable & Preamp [dB]	Level(QP) [dBuV/m]	Angle [°]	Height [cm]	Polar.	Limit [dBuV/m]	Margin [dB]
87.229	55.6	BL	8.2	-31.9	31.9	78	107	Vert.	50	18.1
251.436	45.1	BL	12.6	-31.1	26.6	218	143	Vert.	57	30.4
67.951	58	BL	5.2	-32	31.2	203	107	Vert.	50	18.8

DATA SHEET		Date	04-Oct-07
Model	SFS30481R2	Temp.	25 degreeC
Test	EMI Line conduction & Radiated emission	Humid.	45 %RH
		Tested by	Y.Miyawaki

1.Conditions

(1)Photograph of Test Set-Up

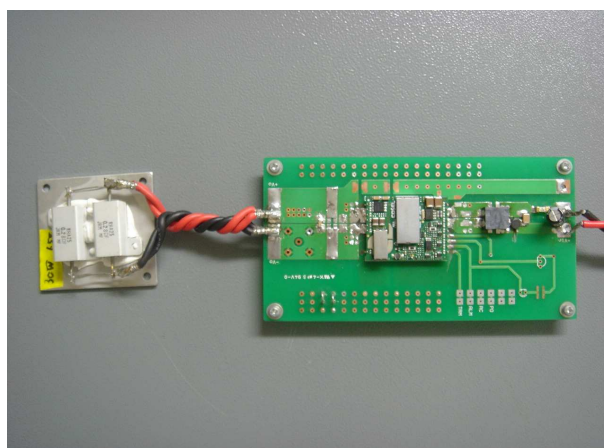
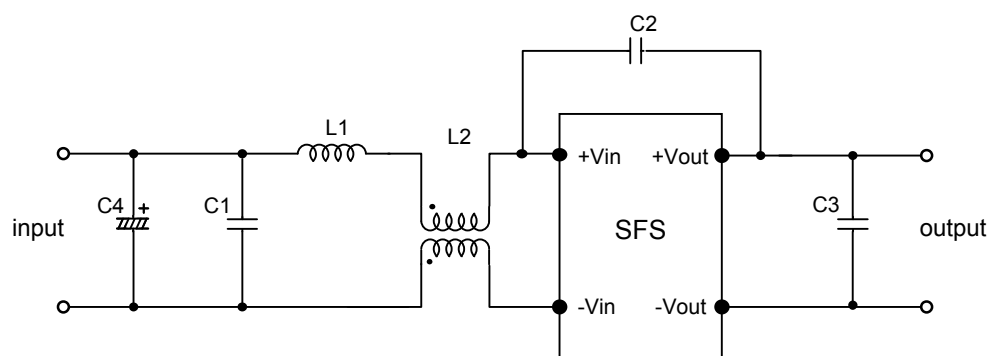


Fig1. Photograph of Test Set-Up

(2)Testing circuitry



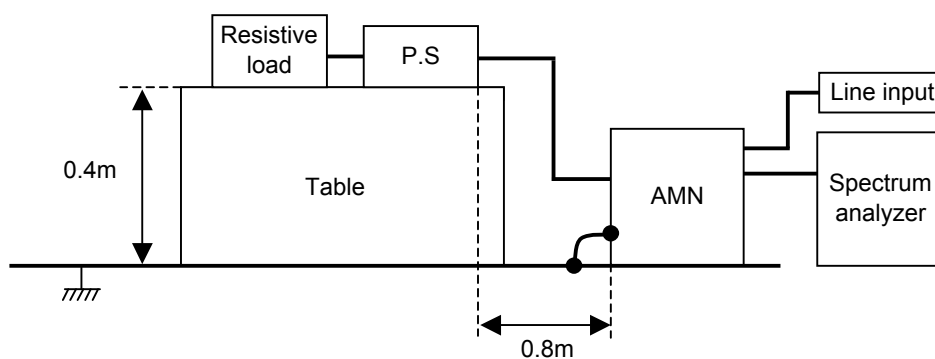
C1: 1 μ F 100V Ceramic capacitor
 C2: 2200pF 630V Ceramic capacitor
 C3: 22 μ F 16V Ceramic capacitor
 C4: 22 μ F 100V Electric capacitor

L1: 1 μ H 2.4A Inductor
 L2: ACM1211-102-2PL : TDK

Fig2. Testing circuitry

DATA SHEET		Date	04-Oct-07
Model	Circuit used for measurement	Temp.	25 degreeC
Test	EMI Line conduction & Radiated emission	Humid.	45 %RH
		Tested by	Y.Miyawaki

1. Line conduction



2. Radiated emission

