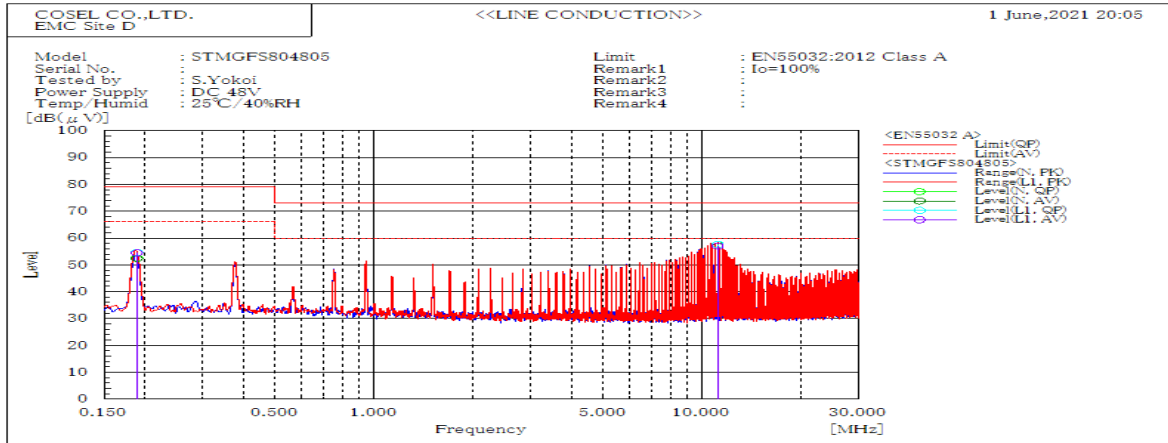
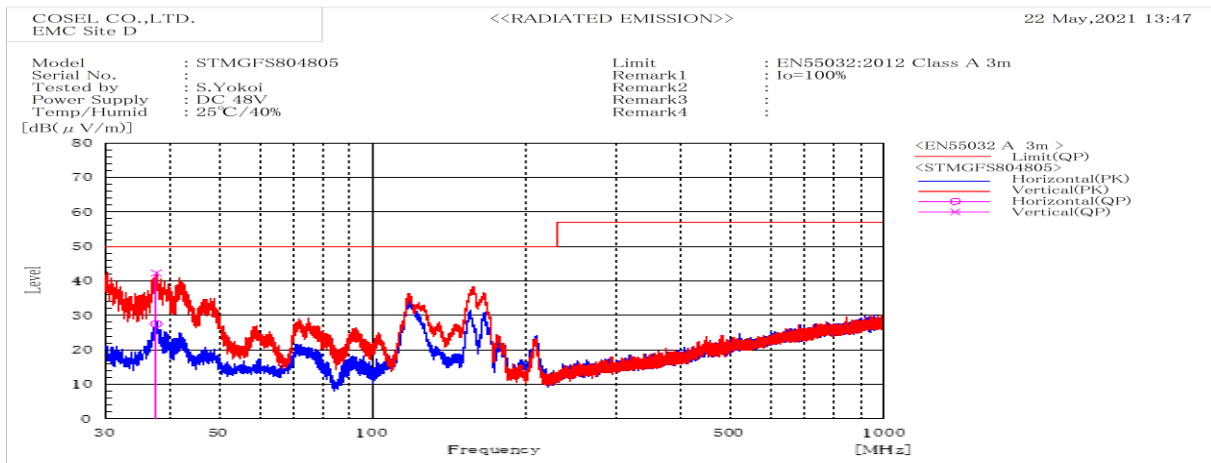


DATA SHEET		Date	08-Jul-21
Model	STMGFS804805	Temp.	25 degreeC
Test	EMI Line conduction & Radiated emission	Humid.	40 %RH
		Tested by	S.Yokoi



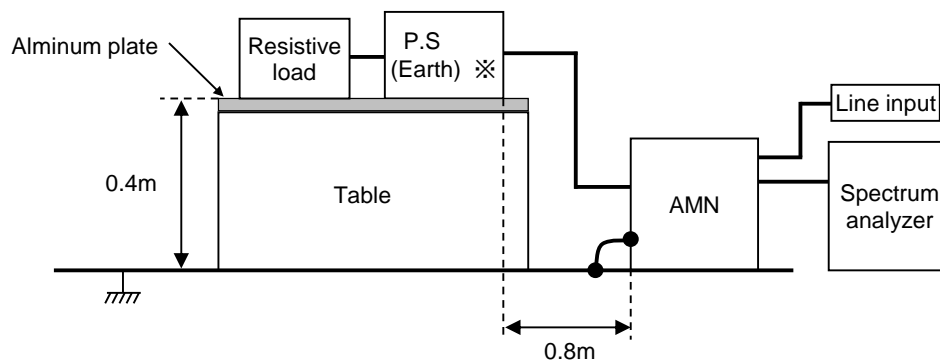
Frequency	Line	Level		Limit		Margin		Pass/Fail	Remark
MHz		dB(μV)		dB(μV)		dB			
		QP	AV	QP	AV	QP	AV		
0.189	L1	54.6	54.5	79	66	24.4	11.5	Pass	
11.155	L1	57.6	57	73	60	15.4	3	Pass	
0.189	N	52.5	52.4	79	66	26.5	13.6	Pass	
11.154	N	57.6	57	73	60	15.4	3	Pass	



Frequency	Polarization	Stability	Level	Limit	Margin	Pass/Fail	Height	Angle	Remark
MHz			dB(μV/m)	dB(μV/m)	dB				
			QP	QP	QP		cm	deg	
37.644	V	Stable	42.3	50	7.7	Pass	100.2	334.6	
37.654	H	Stable	27.5	50	22.5	Pass	200	46.4	

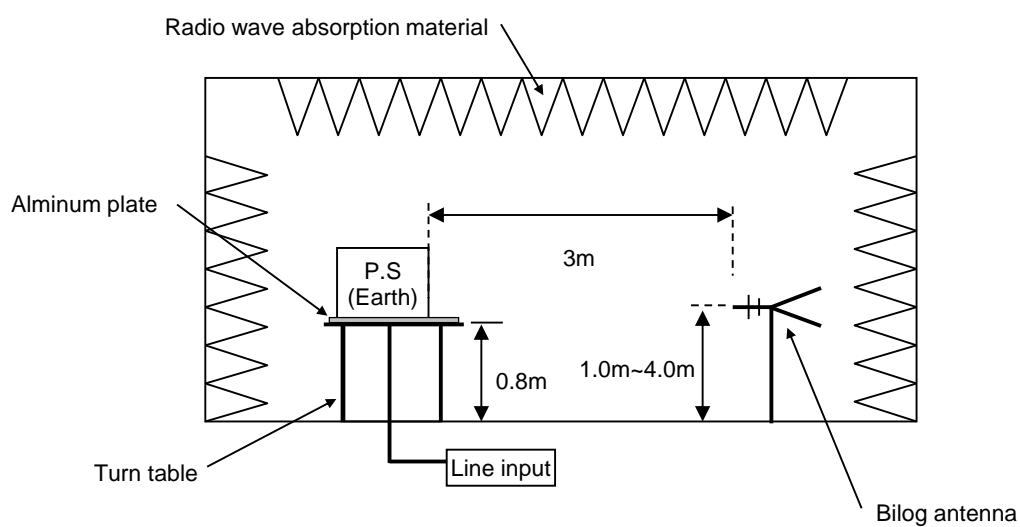
DATA SHEET		Date	08-Jul-21
Model	Circuit used for measurement	Temp.	25 degreeC
Test	EMI Line conduction & Radiated emission	Humid.	40 %RH
		Tested by	S.Yokoi

1. Line conduction



※External capacitor on the input side : 120 μ F

2. Radiated emission



Conditions

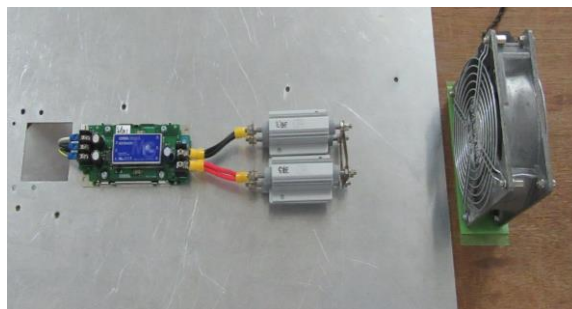
Test : EMI

Model Name : STMGFS80□□

○Photographs of Test Set-Up LINE CONDUCTION



RADIATED EMISSION



○Testing circuitry

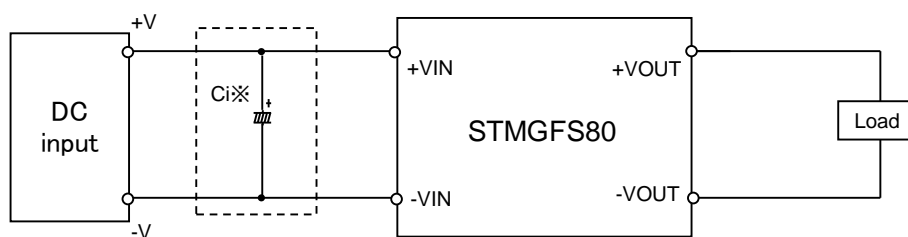


Fig.1 Testing circuitry

※Ci : External capacitor on the input side when LINE CONDUCTION

Ci : STMGFS8024□□ 220 μ F
STMGFS8048□□ 120 μ F