

TEST DATA OF STMGFS804805

Regulated DC Power Supply
May 18, 2021

Approved by : Hironobu Shimizu
Hironobu Shimizu Design Manager

Prepared by : Hikaru Inagaki
Hikaru Inagaki Design Engineer

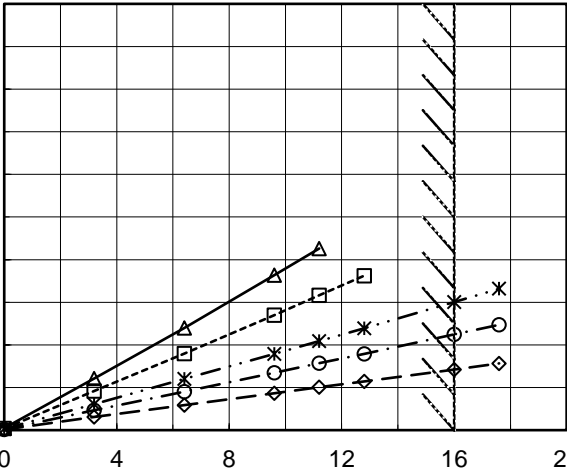
COSEL CO.,LTD.

CONTENTS

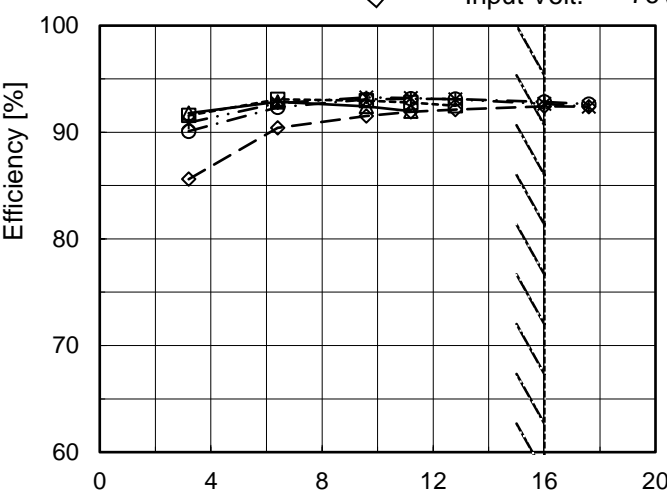
1.Input Current (by Load Current)	1
2.Efficiency (by Load Current)	2
3.Line Regulation	3
4.Load Regulation	4
5.Ripple-Noise	4
6.Rise and Fall Time	5
7.Overcurrent Protection	6
8.Ambient Temperature Drift	7
9.Minimum Input Voltage for Regulated Output Voltage	7
10.Overvoltage Protection	7
11.Figure of Testing Circuitry	8

(Final Page 8)

COSEL

Model		STMGFS804805		Temperature 25°C																																																																												
Item		Input Current (by Load Current)		Testing Circuitry Figure A																																																																												
Object																																																																																
1.Graph		<div><div>—△—</div>Input Volt. 18V</div> <div><div>---□---</div>Input Volt. 24V</div> <div><div>-·-*·-</div>Input Volt. 36V</div> <div><div>-·-○-</div>Input Volt. 48V</div> <div><div>--◇--</div>Input Volt. 76V</div>		2.Values																																																																												
<div><div>Input Current [A]</div><div></div><div><div>Load Current [A]</div></div></div>		<table><tr><th rowspan="2">Load Current [A]</th><th colspan="5">Input Current [A]</th></tr><tr><th>Input Volt. 18[V]</th><th>Input Volt. 24[V]</th><th>Input Volt. 36[V]</th><th>Input Volt. 48[V]</th><th>Input Volt. 76[V]</th></tr><tr><td>0.0</td><td>0.038</td><td>0.031</td><td>0.024</td><td>0.011</td><td>0.011</td></tr><tr><td>3.2</td><td>0.970</td><td>0.731</td><td>0.488</td><td>0.371</td><td>0.247</td></tr><tr><td>6.4</td><td>1.916</td><td>1.435</td><td>0.962</td><td>0.725</td><td>0.467</td></tr><tr><td>9.6</td><td>2.907</td><td>2.160</td><td>1.431</td><td>1.076</td><td>0.692</td></tr><tr><td>11.2</td><td>3.409</td><td>2.532</td><td>1.672</td><td>1.255</td><td>0.803</td></tr><tr><td>12.8</td><td>- ※1</td><td>2.899</td><td>1.910</td><td>1.432</td><td>0.915</td></tr><tr><td>16.0</td><td>- ※1</td><td>- ※2</td><td>2.403</td><td>1.796</td><td>1.138</td></tr><tr><td>17.6</td><td>- ※1</td><td>- ※2</td><td>2.654</td><td>1.977</td><td>1.253</td></tr><tr><td>--</td><td>-</td><td>-</td><td>-</td><td>-</td><td>-</td></tr><tr><td>--</td><td>-</td><td>-</td><td>-</td><td>-</td><td>-</td></tr><tr><td>--</td><td>-</td><td>-</td><td>-</td><td>-</td><td>-</td></tr></table>		Load Current [A]	Input Current [A]					Input Volt. 18[V]	Input Volt. 24[V]	Input Volt. 36[V]	Input Volt. 48[V]	Input Volt. 76[V]	0.0	0.038	0.031	0.024	0.011	0.011	3.2	0.970	0.731	0.488	0.371	0.247	6.4	1.916	1.435	0.962	0.725	0.467	9.6	2.907	2.160	1.431	1.076	0.692	11.2	3.409	2.532	1.672	1.255	0.803	12.8	- ※1	2.899	1.910	1.432	0.915	16.0	- ※1	- ※2	2.403	1.796	1.138	17.6	- ※1	- ※2	2.654	1.977	1.253	--	-	-	-	-	-	--	-	-	-	-	-	--	-	-	-	-	-
Load Current [A]	Input Current [A]																																																																															
	Input Volt. 18[V]	Input Volt. 24[V]	Input Volt. 36[V]	Input Volt. 48[V]	Input Volt. 76[V]																																																																											
0.0	0.038	0.031	0.024	0.011	0.011																																																																											
3.2	0.970	0.731	0.488	0.371	0.247																																																																											
6.4	1.916	1.435	0.962	0.725	0.467																																																																											
9.6	2.907	2.160	1.431	1.076	0.692																																																																											
11.2	3.409	2.532	1.672	1.255	0.803																																																																											
12.8	- ※1	2.899	1.910	1.432	0.915																																																																											
16.0	- ※1	- ※2	2.403	1.796	1.138																																																																											
17.6	- ※1	- ※2	2.654	1.977	1.253																																																																											
--	-	-	-	-	-																																																																											
--	-	-	-	-	-																																																																											
--	-	-	-	-	-																																																																											
Note: Slanted line shows the range of the rated load current.		※1 Maximam output current at minimum input Voltage is 70% of rated load current.		※2 Maximam output current at 24V input Voltage is 80% of rated load current.																																																																												
		Refer to instruction manuals for details of input derating.																																																																														

BC-11725

Model		STMGFS804805		Temperature 25°C																																																																															
Item		Efficiency (by Load Current)		Testing Circuitry Figure A																																																																															
Object																																																																																			
1.Graph		<div><div><div>—△—</div><div>Input Volt.</div><div>18V</div></div><div><div>---□---</div><div>Input Volt.</div><div>24V</div></div><div><div>-·-·*-·-</div><div>Input Volt.</div><div>36V</div></div><div><div>-·-·○-·-</div><div>Input Volt.</div><div>48V</div></div><div><div>---◇---</div><div>Input Volt.</div><div>76V</div></div></div>  <p>Note: Slanted line shows the range of the rated load current.</p>		2.Values																																																																															
		<table><tr><th rowspan="2">Load Current [A]</th><th colspan="5">Efficiency [%]</th></tr><tr><th>Input Volt. 18[V]</th><th>Input Volt. 24[V]</th><th>Input Volt. 36[V]</th><th>Input Volt. 48[V]</th><th>Input Volt. 76[V]</th></tr><tr><td>0.0</td><td>-</td><td>-</td><td>-</td><td>-</td><td>-</td></tr><tr><td>3.2</td><td>91.8</td><td>91.6</td><td>90.9</td><td>90.1</td><td>85.6</td></tr><tr><td>6.4</td><td>92.9</td><td>93.1</td><td>92.7</td><td>92.3</td><td>90.4</td></tr><tr><td>9.6</td><td>92.4</td><td>93.0</td><td>93.3</td><td>93.1</td><td>91.5</td></tr><tr><td>11.2</td><td>92.0</td><td>92.8</td><td>93.2</td><td>93.1</td><td>91.9</td></tr><tr><td>12.8</td><td>- ※1</td><td>92.5</td><td>93.1</td><td>93.1</td><td>92.1</td></tr><tr><td>16.0</td><td>- ※1</td><td>- ※2</td><td>92.7</td><td>92.8</td><td>92.4</td></tr><tr><td>17.6</td><td>- ※1</td><td>- ※2</td><td>92.4</td><td>92.6</td><td>92.4</td></tr><tr><td>--</td><td>-</td><td>-</td><td>-</td><td>-</td><td>-</td></tr><tr><td>--</td><td>-</td><td>-</td><td>-</td><td>-</td><td>-</td></tr><tr><td>--</td><td>-</td><td>-</td><td>-</td><td>-</td><td>-</td></tr></table>					Load Current [A]	Efficiency [%]					Input Volt. 18[V]	Input Volt. 24[V]	Input Volt. 36[V]	Input Volt. 48[V]	Input Volt. 76[V]	0.0	-	-	-	-	-	3.2	91.8	91.6	90.9	90.1	85.6	6.4	92.9	93.1	92.7	92.3	90.4	9.6	92.4	93.0	93.3	93.1	91.5	11.2	92.0	92.8	93.2	93.1	91.9	12.8	- ※1	92.5	93.1	93.1	92.1	16.0	- ※1	- ※2	92.7	92.8	92.4	17.6	- ※1	- ※2	92.4	92.6	92.4	--	-	-	-	-	-	--	-	-	-	-	-	--	-	-	-	-	-
Load Current [A]	Efficiency [%]																																																																																		
	Input Volt. 18[V]	Input Volt. 24[V]	Input Volt. 36[V]	Input Volt. 48[V]	Input Volt. 76[V]																																																																														
0.0	-	-	-	-	-																																																																														
3.2	91.8	91.6	90.9	90.1	85.6																																																																														
6.4	92.9	93.1	92.7	92.3	90.4																																																																														
9.6	92.4	93.0	93.3	93.1	91.5																																																																														
11.2	92.0	92.8	93.2	93.1	91.9																																																																														
12.8	- ※1	92.5	93.1	93.1	92.1																																																																														
16.0	- ※1	- ※2	92.7	92.8	92.4																																																																														
17.6	- ※1	- ※2	92.4	92.6	92.4																																																																														
--	-	-	-	-	-																																																																														
--	-	-	-	-	-																																																																														
--	-	-	-	-	-																																																																														
		<div>※1 Maximam output current at minimum input Voltage is 70% of rated load current.</div> <div>※2 Maximam output current at 24V input Voltage is 80% of rated load current.</div> <div>Refer to instruction manuals for details of input derating.</div>																																																																																	

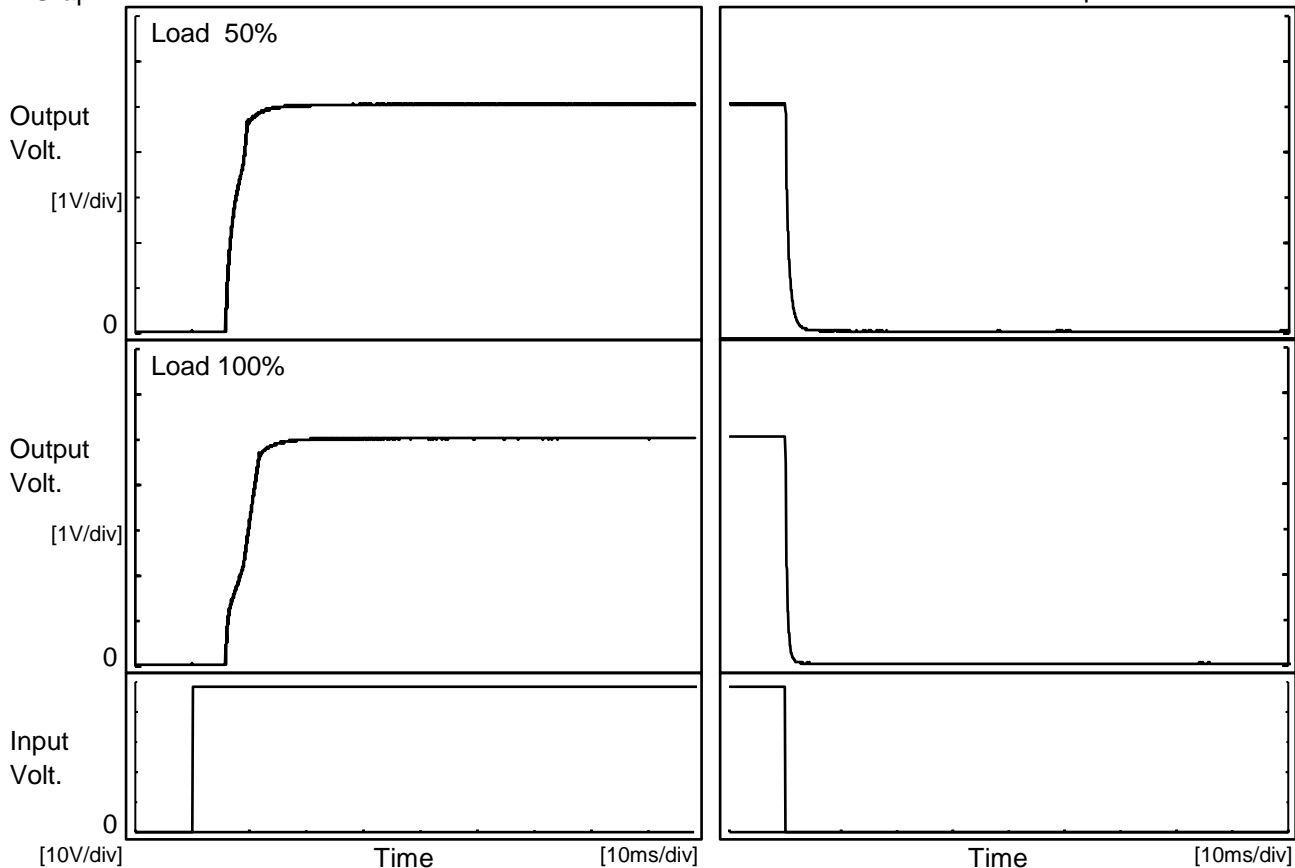
Model		STMGFS804805																																																															
Item		Line Regulation																																																															
Object		+5V16A																																																															
1.Graph		2.Values																																																															
<div><div><div><div><div></div><div></div></div><div><div></div><div></div></div></div><div><div></div><div></div></div><div><div></div><div></div></div></div><div>Load 50%</div><div>Load 100%</div></div> <div><table><thead><tr><th>Input Voltage [V]</th><th>Output Voltage [V] (Load 50%)</th><th>Output Voltage [V] (Load 100%)</th></tr></thead><tbody><tr><td>17</td><td>5.018</td><td>5.005</td></tr><tr><td>18</td><td>5.018</td><td>5.005</td></tr><tr><td>24</td><td>5.018</td><td>5.005</td></tr><tr><td>30</td><td>5.018</td><td>5.005</td></tr><tr><td>36</td><td>5.018</td><td>5.005</td></tr><tr><td>48</td><td>5.018</td><td>5.005</td></tr><tr><td>60</td><td>5.018</td><td>5.004</td></tr><tr><td>76</td><td>5.018</td><td>5.004</td></tr><tr><td>80</td><td>5.018</td><td>5.003</td></tr></tbody></table></div> <div><p>Note: Slanted line shows the range of the rated input voltage.</p></div>		Input Voltage [V]	Output Voltage [V] (Load 50%)	Output Voltage [V] (Load 100%)	17	5.018	5.005	18	5.018	5.005	24	5.018	5.005	30	5.018	5.005	36	5.018	5.005	48	5.018	5.005	60	5.018	5.004	76	5.018	5.004	80	5.018	5.003	<table><thead><tr><th rowspan="2">Input Voltage [V]</th><th colspan="2">Output Voltage [V]</th></tr><tr><th>Load 50%</th><th>Load 100%</th></tr></thead><tbody><tr><td>17</td><td>5.018</td><td>- ※1</td></tr><tr><td>18</td><td>5.018</td><td>- ※1</td></tr><tr><td>24</td><td>5.018</td><td>- ※2</td></tr><tr><td>30</td><td>5.018</td><td>5.005</td></tr><tr><td>36</td><td>5.018</td><td>5.005</td></tr><tr><td>48</td><td>5.018</td><td>5.005</td></tr><tr><td>60</td><td>5.018</td><td>5.004</td></tr><tr><td>76</td><td>5.018</td><td>5.004</td></tr><tr><td>80</td><td>5.018</td><td>5.003</td></tr></tbody></table> <div><div>※1</div><div>Maximam output current at minimum input Voltage is 70% of rated load current.</div></div> <div><div>※2</div><div>Maximam output current at 24V input Voltage is 80% of rated load current. Refer to instruction manuals for details of input derating.</div></div>		Input Voltage [V]	Output Voltage [V]		Load 50%	Load 100%	17	5.018	- ※1	18	5.018	- ※1	24	5.018	- ※2	30	5.018	5.005	36	5.018	5.005	48	5.018	5.005	60	5.018	5.004	76	5.018	5.004	80	5.018	5.003
Input Voltage [V]	Output Voltage [V] (Load 50%)	Output Voltage [V] (Load 100%)																																																															
17	5.018	5.005																																																															
18	5.018	5.005																																																															
24	5.018	5.005																																																															
30	5.018	5.005																																																															
36	5.018	5.005																																																															
48	5.018	5.005																																																															
60	5.018	5.004																																																															
76	5.018	5.004																																																															
80	5.018	5.003																																																															
Input Voltage [V]	Output Voltage [V]																																																																
	Load 50%	Load 100%																																																															
17	5.018	- ※1																																																															
18	5.018	- ※1																																																															
24	5.018	- ※2																																																															
30	5.018	5.005																																																															
36	5.018	5.005																																																															
48	5.018	5.005																																																															
60	5.018	5.004																																																															
76	5.018	5.004																																																															
80	5.018	5.003																																																															

- 4 -



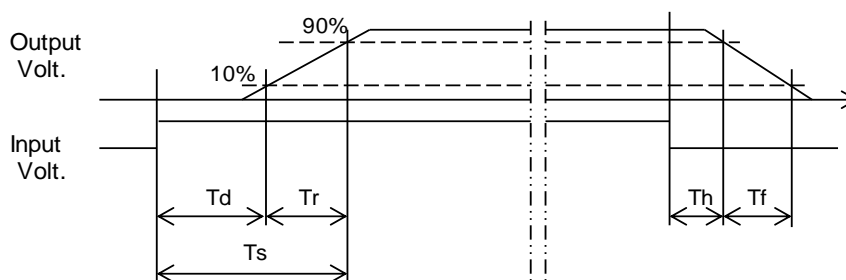
Model	STMGFS804805	Temperature	25°C
Item	Rise and Fall Time	Testing Circuitry	Figure A
Object	+5V16A		

1.Graph



2.Values

Load \ Time	Td	Tr	Ts	Th	Tf
50 %	6.1	3.7	9.8	0.2	1.4
100 %	6.0	5.8	11.8	0.1	0.8



Model		STMGFS804805	Temperature		25°C																																																																																			
Item		Overcurrent Protection	Testing Circuitry		Figure A																																																																																			
Object		+5V16A																																																																																						
1.Graph			2.Values																																																																																					
<div><div><div><div></div><div></div><div></div><div></div><div></div></div><div><div>△</div><div>□</div><div>*</div><div>○</div><div>◇</div></div><div><div>Input Volt.</div><div>Input Volt.</div><div>Input Volt.</div><div>Input Volt.</div><div>Input Volt.</div></div><div><div>18V</div><div>24V</div><div>36V</div><div>48V</div><div>76V</div></div></div><div></div><div>Load Current [A]</div></div>			<table><tr><th rowspan="2">Output Voltage [V]</th><th colspan="5">Load Current [A]</th></tr><tr><th>Input Volt. 18[V]</th><th>Input Volt. 24[V]</th><th>Input Volt. 36[V]</th><th>Input Volt. 48[V]</th><th>Input Volt. 76[V]</th></tr><tr><td>5.00</td><td>13.291</td><td>16.096</td><td>19.105</td><td>19.368</td><td>20.064</td></tr><tr><td>4.75</td><td>-※1</td><td>-※2</td><td>-</td><td>-</td><td>-</td></tr><tr><td>4.50</td><td>-</td><td>-</td><td>-</td><td>-</td><td>-</td></tr><tr><td>4.00</td><td>-</td><td>-</td><td>-</td><td>-</td><td>-</td></tr><tr><td>3.50</td><td>-</td><td>-</td><td>-</td><td>-</td><td>-</td></tr><tr><td>3.00</td><td>-</td><td>-</td><td>-</td><td>-</td><td>-</td></tr><tr><td>2.50</td><td>-</td><td>-</td><td>-</td><td>-</td><td>-</td></tr><tr><td>2.00</td><td>-</td><td>-</td><td>-</td><td>-</td><td>-</td></tr><tr><td>1.50</td><td>-</td><td>-</td><td>-</td><td>-</td><td>-</td></tr><tr><td>1.00</td><td>-</td><td>-</td><td>-</td><td>-</td><td>-</td></tr><tr><td>0.50</td><td>-</td><td>-</td><td>-</td><td>-</td><td>-</td></tr><tr><td>0.00</td><td>-</td><td>-</td><td>-</td><td>-</td><td>-</td></tr></table>			Output Voltage [V]	Load Current [A]					Input Volt. 18[V]	Input Volt. 24[V]	Input Volt. 36[V]	Input Volt. 48[V]	Input Volt. 76[V]	5.00	13.291	16.096	19.105	19.368	20.064	4.75	-※1	-※2	-	-	-	4.50	-	-	-	-	-	4.00	-	-	-	-	-	3.50	-	-	-	-	-	3.00	-	-	-	-	-	2.50	-	-	-	-	-	2.00	-	-	-	-	-	1.50	-	-	-	-	-	1.00	-	-	-	-	-	0.50	-	-	-	-	-	0.00	-	-	-	-	-
Output Voltage [V]	Load Current [A]																																																																																							
	Input Volt. 18[V]	Input Volt. 24[V]	Input Volt. 36[V]	Input Volt. 48[V]	Input Volt. 76[V]																																																																																			
5.00	13.291	16.096	19.105	19.368	20.064																																																																																			
4.75	-※1	-※2	-	-	-																																																																																			
4.50	-	-	-	-	-																																																																																			
4.00	-	-	-	-	-																																																																																			
3.50	-	-	-	-	-																																																																																			
3.00	-	-	-	-	-																																																																																			
2.50	-	-	-	-	-																																																																																			
2.00	-	-	-	-	-																																																																																			
1.50	-	-	-	-	-																																																																																			
1.00	-	-	-	-	-																																																																																			
0.50	-	-	-	-	-																																																																																			
0.00	-	-	-	-	-																																																																																			
<p>Note: Slanted line shows the range of the rated load current.</p> <p>Intermittent operation occurs when overcurrent protection is activated.</p>			<p>※1 Maximam output current at minimum input Voltage is 70% of rated load current.</p> <p>※2 Maximam output current at 24V input Voltage is 80% of rated load current.</p> <p>Refer to instruction manuals for details of input derating.</p>																																																																																					

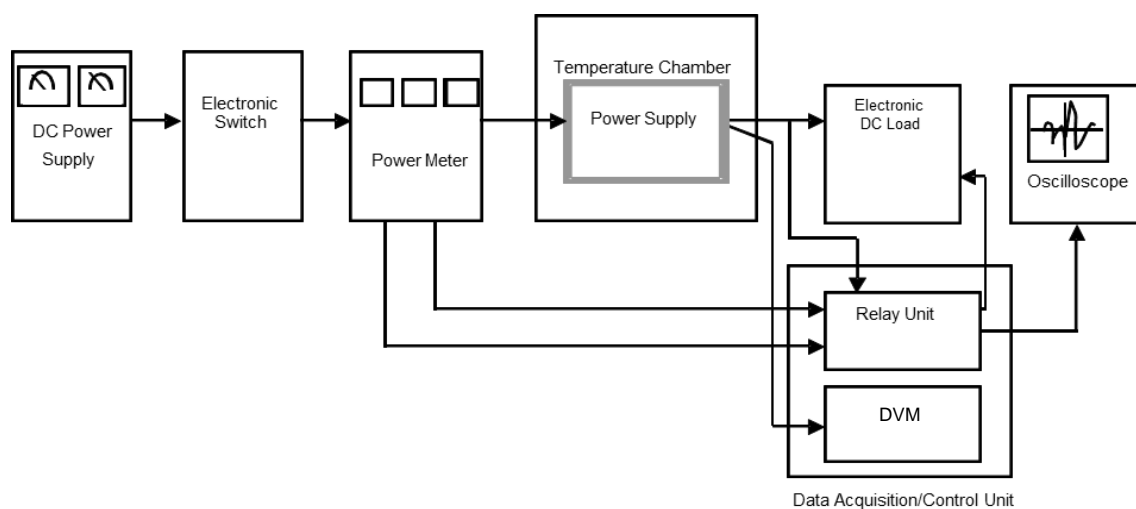


Figure A

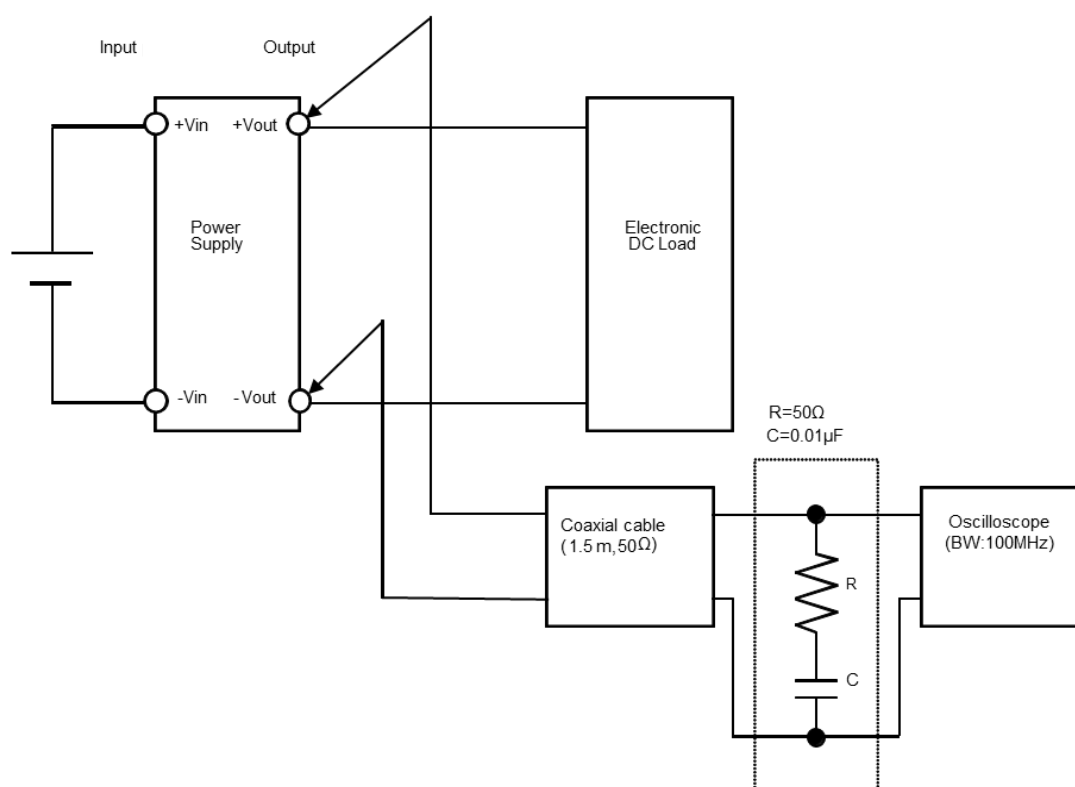


Figure B (Ripple noise Characteristic)