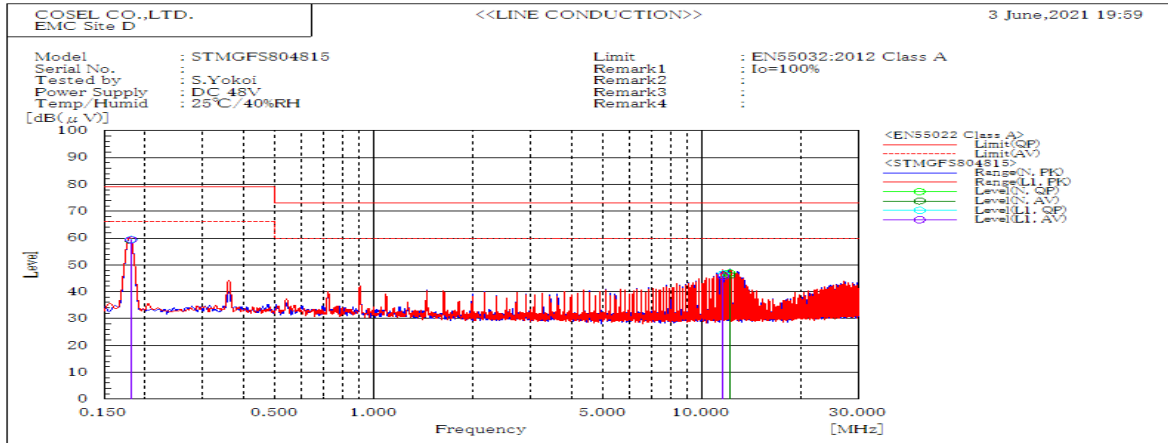
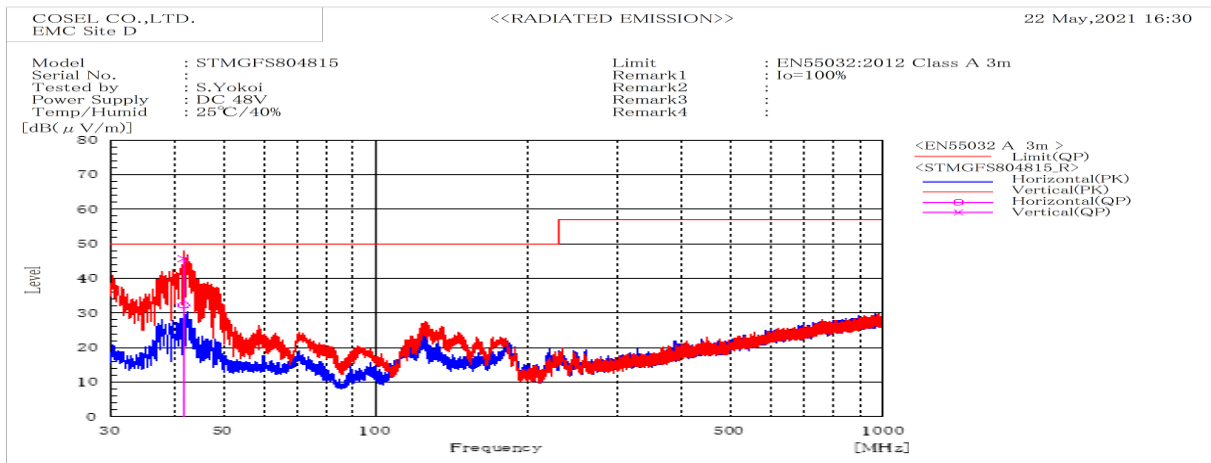


DATA SHEET		Date	08-Jul-21
Model	STMGFS804815	Temp.	25 degreeC
Test	EMI Line conduction & Radiated emission	Humid.	40 %RH
		Tested by	S.Yokoi



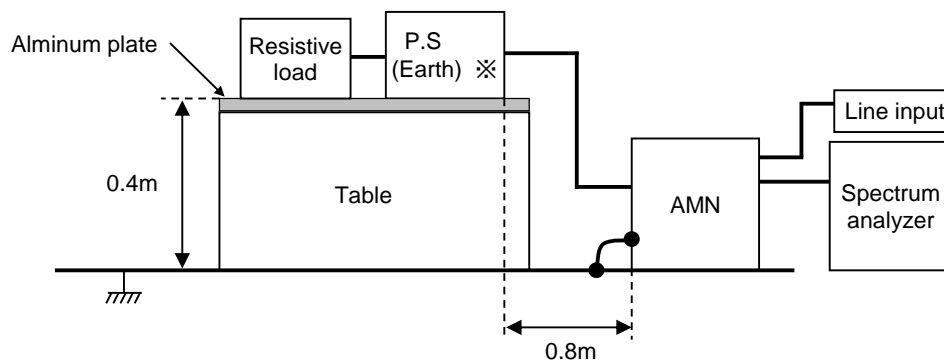
Frequency	Line	Level		Limit		Margin		Pass/Fail	Remark
MHz		dB(μV)		dB(μV)		dB			
		QP	AV	QP	AV	QP	AV		
0.181	L1	59.5	59.3	79	66	19.5	6.7	Pass	
11.588	L1	46.6	45.8	73	60	26.4	14.2	Pass	
0.181	N	59.4	59.3	79	66	19.6	6.7	Pass	
12.128	N	47	46.2	73	60	26	13.8	Pass	



Frequency	Polarization	Stability	Level	Limit	Margin	Pass/Fail	Height	Angle	Remark
MHz			dB(μV/m)	dB(μV/m)	dB				
			QP	QP	QP		cm	deg	
41.728	V	Stable	45.6	50	4.4	Pass	100.2	0	
41.729	H	Stable	32.3	50	17.7	Pass	198.5	42.1	

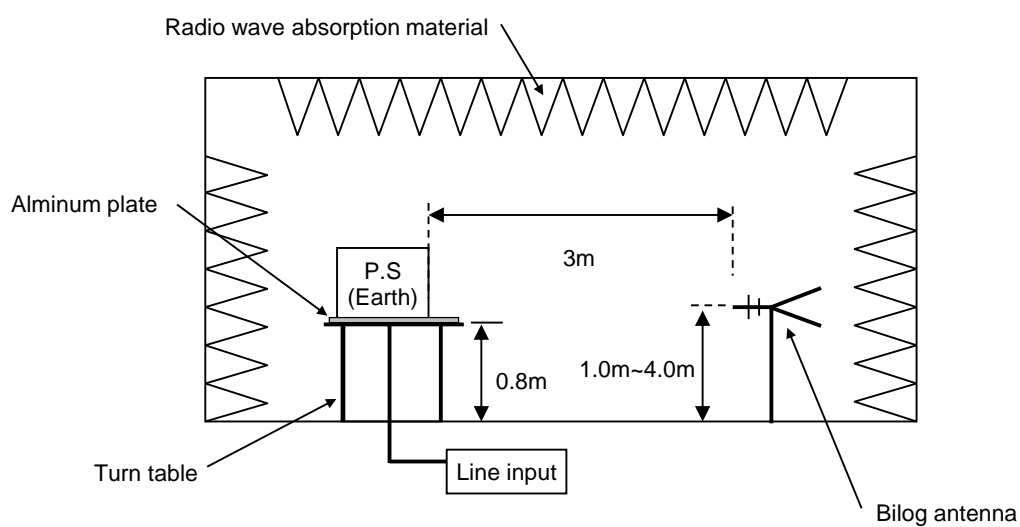
DATA SHEET		Date	08-Jul-21
Model	Circuit used for measurement	Temp.	25 degreeC
Test	EMI Line conduction & Radiated emission	Humid.	40 %RH
		Tested by	S.Yokoi

1. Line conduction



※External capacitor on the input side : 120 μ F

2. Radiated emission



Conditions

Test : EMI

Model Name : STMGFS80□□

○Photographs of Test Set-Up LINE CONDUCTION



RADIATED EMISSION



○Testing circuitry

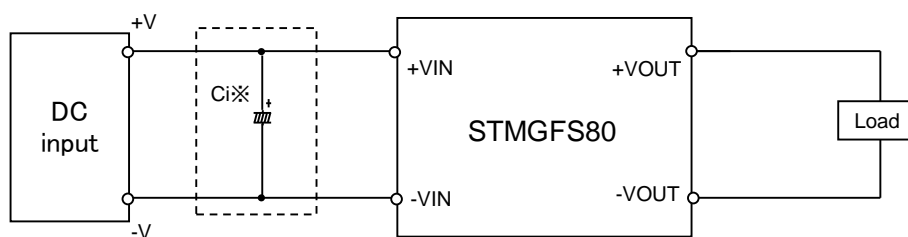


Fig.1 Testing circuitry

※Ci : External capacitor on the input side when LINE CONDUCTION

Ci : STMGFS8024□□ 220 μ F
STMGFS8048□□ 120 μ F