

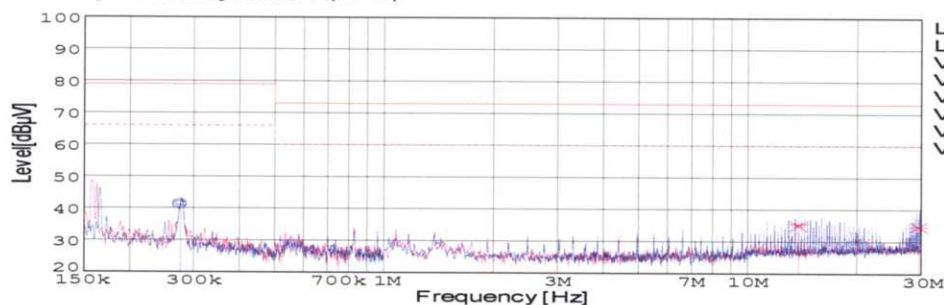
DATA SHEET

Model		SUCS100505	Date	01-Mar-05
Test		EMI Line conduction & Radiated emission	Temp.	25degreeC
			Humid.	45 %RH
			Tested by	C.Makino

LINE CONDUCTION

Model Name : SUCS100505
 Model No. :
 Serial No. :
 Points : 3
 Detector : PEAK/QP/Ave.
 Line Mode : VA/VB
 Power Supply : DC 5V
 Limit1: [EN 55022] Class A(QP)
 Limit2: [EN 55022] Class A(Ave.)

Temp. : 25degreeC
 Humi. : 45%
 Date : 2005/3/1 16:31
 Test Equip. : R3132,ESPC
 Load Line : 50mm
 Comment : C.Makino



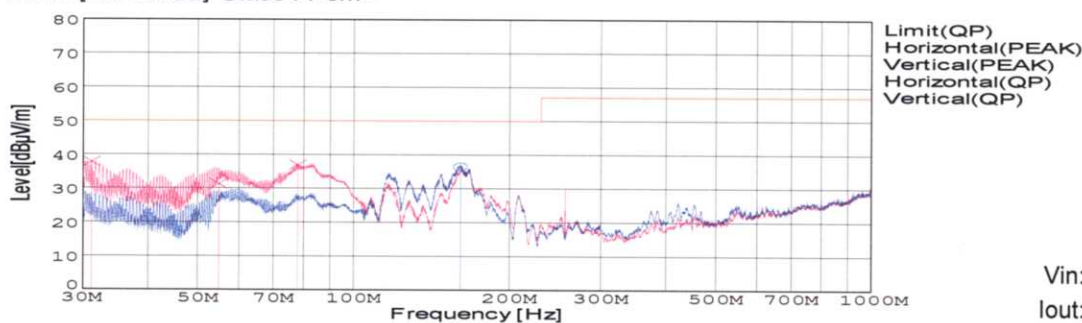
Vin: DC5V
Iout: 2A

Frequency [MHz]	Meter Reading (Ave.) [dBuV]	Meter Reading (QP) [dBuV]	Factor [dB]	Level(Ave.) [dBuV]	Level(QP) [dBuV]	Line	Limit(Ave.) [dBuV]	Limit(QP) [dBuV]	Margin(Ave.) [dB]	Margin(QP) [dB]
0.276	31.8	31.3	9.8	41.6	41.1	VA	66	79	24.4	37.9
13.7819	25.2	24.8	10.2	35.4	35	VB	60	73	24.6	38
29.4943	24.2	24.3	10.5	34.7	34.8	VB	60	73	25.3	38.2

RADIATED EMISSION

Model Name : SUCS100505
 Model No. :
 Serial No. :
 Points : 4
 Detector : PEAK/QP
 Polarization : Hori. & Vert.
 Power Supply : DC 5V
 Limit: [EN 55022] Class A<3m>

Temp. : 25degreeC
 Humi. : 45%
 Date : 2005/2/18 14:41
 Test Equip. : R3132,ESPC
 Load Line : 50mm
 Comment : C.Makino



Vin: DC5V
Iout: 2A

Frequency [MHz]	Meter Reading (QP) [dBuV]	Ant. Type	Antenna Factor [dB/m]	Cable & Preamp [dB]	Level(QP) [dBuV/m]	Angle [°]	Height [cm]	Polar.	Limit [dBuV/m]	Margin [dB]
161.135	58.2	BL	9.8	-31.5	36.5	160	156	Hori.	50	13.5
31.184	52.6	BL	17.6	-32.3	37.9	235	100	Vert.	50	12.1
54.909	57.8	BL	5.7	-32.1	31.4	348	119	Vert.	50	18.6
78.074	62.2	BL	6.8	-31.9	37.1	163	113	Vert.	50	12.9

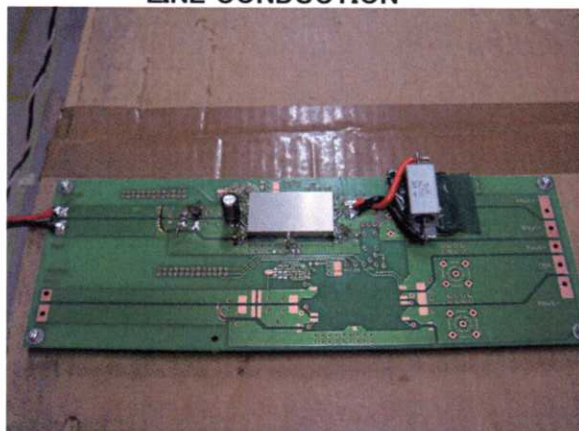
COSEL

Conditions

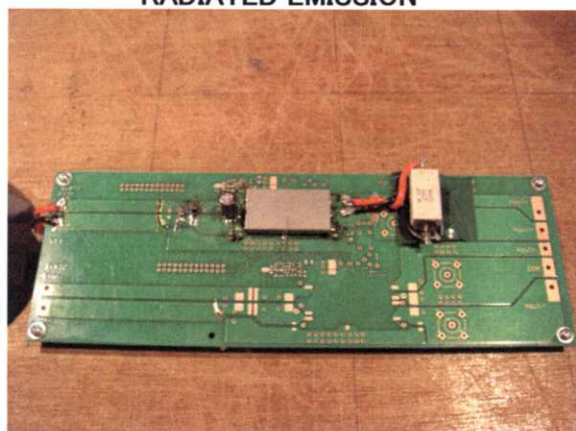
Test : EMI
Model Name : SUCS/SUCW1005

○Photographs of Test Set-Up

LINE CONDUCTION



RADIATED EMISSION



○Testing circuitry

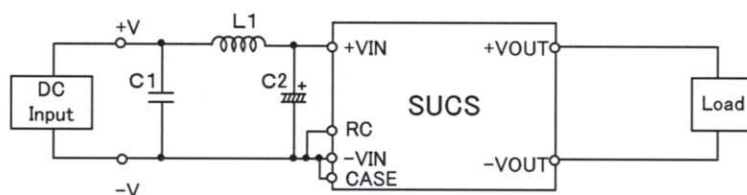


Fig.1 Testing circuitry 1

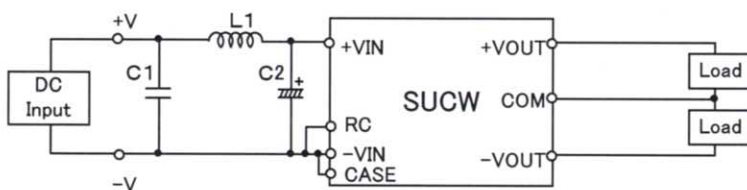


Fig.2 Testing circuitry 2

L1 : 0.5 μ H	CI4-0R5	(KORIN ELECTRONICS)
C1: 25V 22 μ F	GRM32ER71C226K	(MURATA)
C2: 25V 470 μ F	UPM1E471M	(NICHICON)