

DATA SHEET							Date	21-Feb-05		
Model	SUCS61205						Temp.	25 degreeC		
Test	EMI Line conduction & Radiated emission						Humid.	45 %RH		
							Tested by	Y.Hirose		
LINE CONDUCTION										
Model Name : SUCS61205			Temp. : 25							
Model No. :			Humi. : 45							
Serial No. :			Date : 2005/2/21 15:25							
Points : 4			Test Equip. : R3132,ESPC							
Detector : PEAK/QP/Ave.			Comment : Y.Hirose							
Line Mode : VA/VB			5V1.2A							
Power Supply : DC 12V										
Limit1: [EN 55022] Class A(QP)										
Limit2: [EN 55022] Class A(Ave.)										
<div>Limit1(QP) Limit2(Ave.) VA(PEAK) VB(PEAK) VA(QP) VA(Ave.) VB(QP) VB(Ave.)</div> <div>DC 12V 5V1.2A</div>										
Frequency [MHz]	Meter Reading (Ave.) [dBuV]	Meter Reading (QP) [dBuV]	Factor [dB]	Level(Ave.) [dBuV]	Level(QP) [dBuV]	Line	Limit(Ave.) [dBuV]	Limit(QP) [dBuV]	Margin(Ave.) [dB]	Margin(QP) [dB]
0.3296	48.2	47.7	9.8	58	57.5	VA	66	79	8	21.5
0.9918	21.7	22.3	9.9	31.6	32.2	VA	60	73	28.4	40.8
6.9302	18.7	23.3	10	28.7	33.3	VA	60	73	31.3	39.7
7.591	18.3	23.2	10.1	28.4	33.3	VB	60	73	31.6	39.7
RADIATED EMISSION										
Model Name : SUCS61205			Temp. : 25							
Model No. :			Humi. : 45							
Serial No. :			Date : 2005/2/21 15:39							
Points : 2			Test Equip. : R3132,ESPC							
Detector : PEAK/QP			Comment : Y.Hirose							
Polarization : Hori. & Vert.			5V1.2A							
Power Supply : DC 12V										
Limit: [EN 55022] Class A<3m>										
<div>Limit(QP) Horizontal(PEAK) Vertical(PEAK) Horizontal(QP) Vertical(QP)</div> <div>DC 12V 5V1.2A</div>										
Frequency [MHz]	MeterReading (QP) [dBuV]	Ant. Type	Antenna Factor [dB/m]	Cable & Preamp [dB]	Level(QP) [dBuV/m]	Angle [°]	Height [cm]	Polar.	Limit [dBuV/m]	Margin [dB]
197.54	47.1	BL	8.5	-31.3	24.3	193	135	Hori.	50	25.7
205.223	48.8	BL	8.6	-31.3	26.1	27	121	Vert.	50	23.9

COSEL

Conditions

Test : EMI
Model Name : SUCS/SUCW 612□□

○Photographs of Test Set-Up

LINE CONDUCTION



RADIATED EMISSION



○Testing circuitry

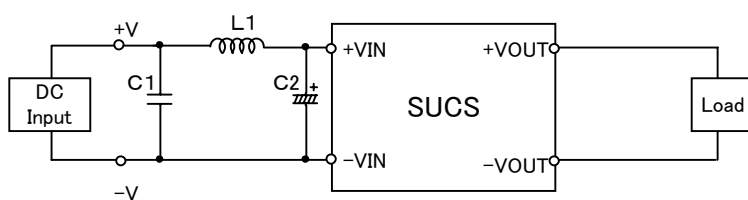


Fig.1 Testing circuitry 1

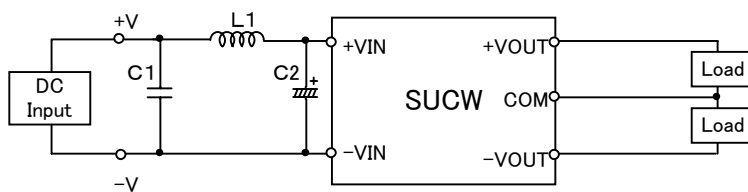


Fig.2 Testing circuitry 2

L1 :	1 μ H	CY3H-1R0	(KORIN ELECTRONICS)
C1 :	25V 1 μ F	C3216JB1E105M	(TDK)
C2 :	25V 220 μ F	LXZ25VB220(M)	(NIPPON CHEMI-COM)