

DATA SHEET

Model SUCW101215

Date 12-Mar-05

Test

EMI
Line conduction & Radiated emission

Temp. 25degreeC

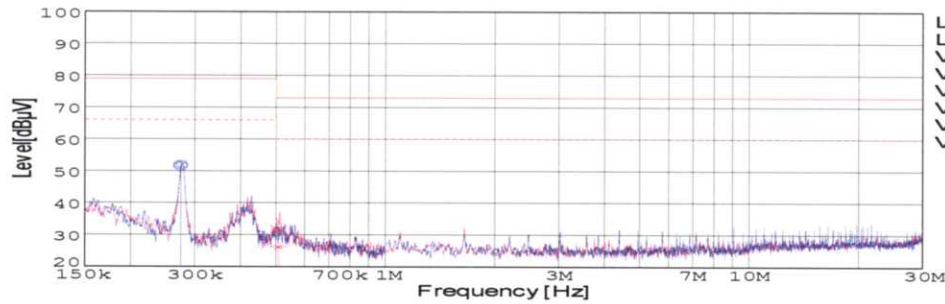
Humid. 45 %RH

Tested by C.Makino

LINE CONDUCTION

Model Name : SUCW101215
Model No. :
Serial No. :
Points : 2
Detector : PEAK/QP/Ave.
Line Mode : VA/VB
Power Supply : DC 12V
Limit1: [EN 55022] Class A(QP)
Limit2: [EN 55022] Class A(Ave.)

Temp. : 25degreeC
Humi. : 45%
Date : 2005/3/12 11:49
Test Equip. : R3132,ESPC
Load Line : 50mm
Comment : C.Makino



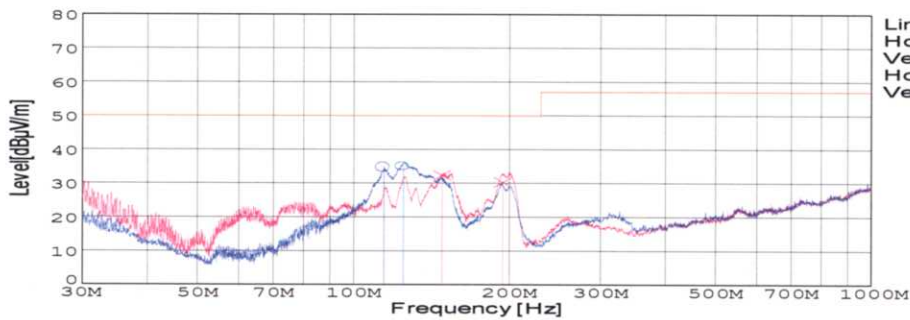
Limit1(QP)
Limit2(Ave.)
VA(PEAK)
VB(PEAK)
VA(QP)
VA(Ave.)
VB(QP)
VB(Ave.)

Frequency [MHz]	Meter Reading (Ave.) [dBuV]	Meter Reading (QP) [dBuV]	Factor [dB]	Level(Ave.) [dBuV]	Level(QP) [dBuV]	Line	Limit(Ave.) [dBuV]	Limit(QP) [dBuV]	Margin(Ave.) [dB]	Margin(QP) [dB]
0.2741	42.2	41.7	9.8	52	51.5	VA	66	79	14	27.5
0.5082	16.3	21.6	9.9	26.2	31.5	VB	60	73	33.8	41.5

RADIATED EMISSION

Model Name : SUCW101215
Model No. :
Serial No. :
Points : 4
Detector : PEAK/QP
Polarization : Hori. & Vert.
Power Supply : DC 12V
Limit: [EN 55022] Class A<3m>

Temp. : 25degreeC
Humi. : 45%
Date : 2005/3/15 16:03
Test Equip. : R3132,ESPC
Load Line : 50mm
Comment : C.Makino



Limit(QP)
Horizontal(PEAK)
Vertical(PEAK)
Horizontal(QP)
Vertical(QP)

Frequency [MHz]	Meter Reading (QP) [dBuV]	Ant. Type	Antenna Factor [dB/m]	Cable & Preamp [dB]	Level(QP) [dBuV/m]	Angle [°]	Height [cm]	Polar.	Limit [dBuV/m]	Margin [dB]
124.865	55.8	BL	11.1	-31.7	35.2	210	122	Hori.	50	14.8
114.414	55.8	BL	10.8	-31.7	34.9	195	137	Hori.	50	15.1
148.223	53.5	BL	10.6	-31.6	32.5	355	146	Vert.	50	17.5
194.179	53.3	BL	8.4	-31.3	30.4	113	100	Vert.	50	19.6

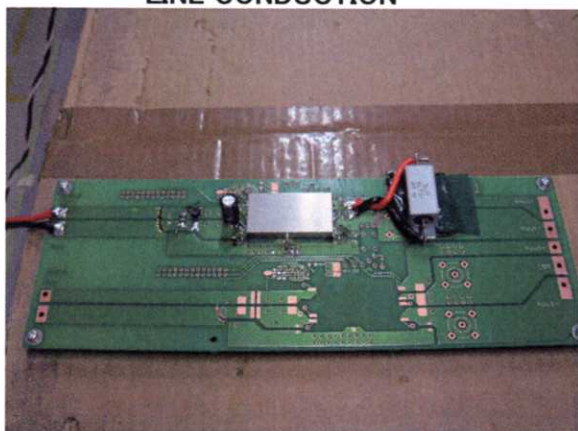


Conditions

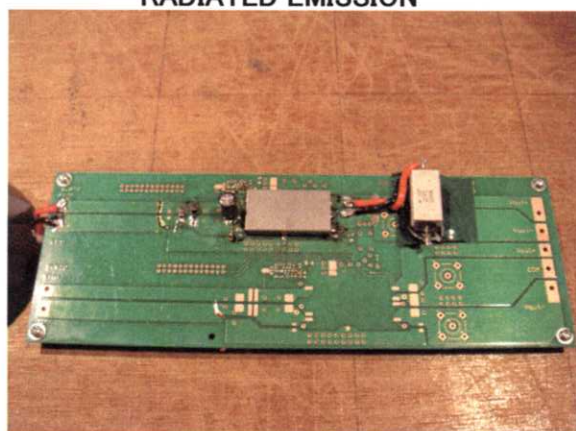
Test : EMI
Model Name : SUCS/SUCW1012

○Photographs of Test Set-Up

LINE CONDUCTION



RADIATED EMISSION



○Testing circuitry

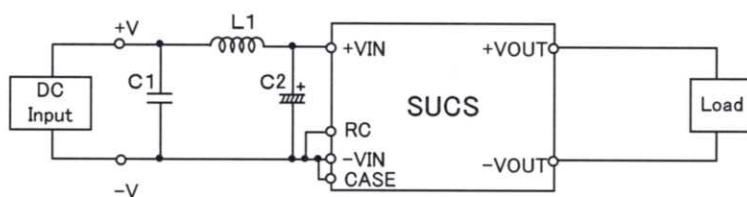


Fig.1 Testing circuitry 1

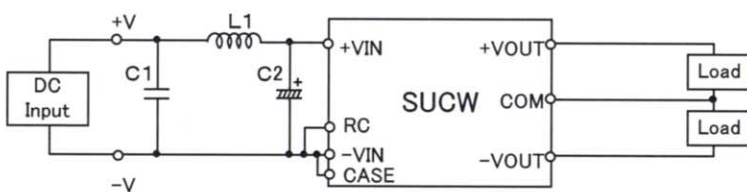


Fig.2 Testing circuitry 2

L1 : 1 μ H	CI4-1R0	(KORIN ELECTRONICS)
C1: 25V 10 μ F	C3225JB1E106M	(TDK)
C2: 25V 220 μ F	UPW1E221M	(NICHICON)