

DATA SHEET							Date	12-Mar-05
Model	SUCW102415						Temp.	25degreeC
Test	EMI Line conduction & Radiated emission						Humid.	45 %RH
							Tested by	C.Makino

**LINE CONDUCTION**  
Model Name : SUCW102415  
Model No. :  
Serial No. :  
Points : 4  
Detector : PEAK/QP/Ave.  
Line Mode : VA/VB  
Power Supply : DC 24V  
Limit1: [EN 55022] Class A(QP)  
Limit2: [EN 55022] Class A(Ave.)

Temp. : 25degreeC  
Humi. : 45%  
Date : 2005/3/12 14:54  
Test Equip. : R3132,ESPC  
Load Line : 50mm  
Comment : C.Makino

Limit1(QP)  
Limit2(Ave.)  
VA(PEAK)  
VB(PEAK)  
VA(QP)  
VA(Ave.)  
VB(QP)  
VB(Ave.)

Vin: DC24V  
Iout: 0.35A

Frequency [MHz]	Meter Reading (Ave.) [dBuV]	Meter Reading (QP) [dBuV]	Factor [dB]	Level(Ave.) [dBuV]	Level(QP) [dBuV]	Line	Limit(Ave.) [dBuV]	Limit(QP) [dBuV]	Margin(Ave.) [dB]	Margin(QP) [dB]
0.2639	38.3	37.9	9.8	48.1	47.7	VA	66	79	17.9	31.3
1.0551	20.5	20.5	9.9	30.4	30.4	VA	60	73	29.6	42.6
1.5844	21.8	21.6	9.9	31.7	31.5	VA	60	73	28.3	41.5
29.5986	25.1	25.6	10.5	35.6	36.1	VB	60	73	24.4	36.9

**RADIATED EMISSION**  
Model Name : SUCW102415  
Model No. :  
Serial No. :  
Points : 3  
Detector : PEAK/QP  
Polarization : Hori. & Vert.  
Power Supply : DC 24V  
Limit: [EN 55022] Class A<3m>

Temp. : 25degreeC  
Humi. : 45%  
Date : 2005/3/12 14:16  
Test Equip. : R3132,ESPC  
Load Line : 50mm  
Comment : C.Makino

Limit(QP)  
Horizontal(PEAK)  
Vertical(PEAK)  
Horizontal(QP)  
Vertical(QP)

Vin: DC24V  
Iout: 0.35A

Frequency [MHz]	Meter Reading (QP) [dBuV]	Ant. Type	Antenna Factor [dB/m]	Cable & Preamp [dB]	Level(QP) [dBuV/m]	Angle [°]	Height [cm]	Polar.	Limit [dBuV/m]	Margin [dB]
190.786	49.7	BL	8.3	-31.3	26.7	164	155	Hori.	50	23.3
30.4	55.4	BL	18	-32.3	41.1	212	100	Vert.	50	8.9
90.105	49.2	BL	8.5	-31.8	25.9	239	111	Vert.	50	24.1

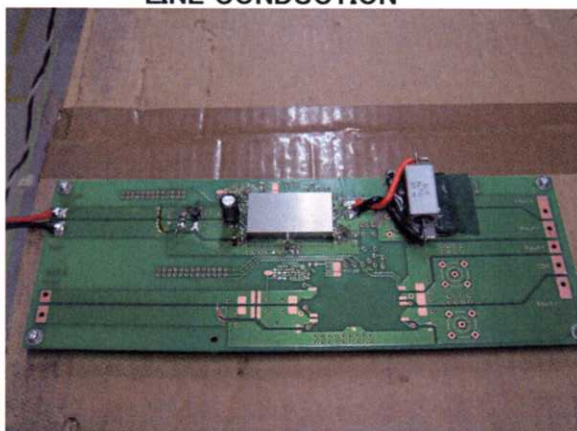


## Conditions

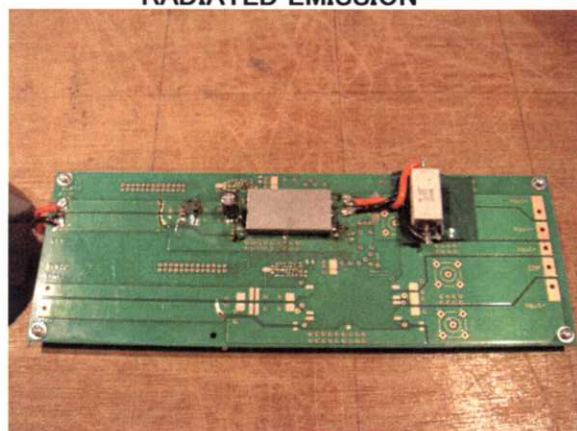
Test : EMI  
Model Name : SUCS/SUCW1024

○Photographs of Test Set-Up

LINE CONDUCTION



RADIATED EMISSION



○Testing circuitry

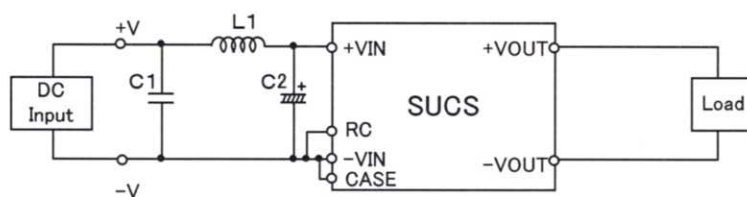


Fig.1 Testing circuitry 1

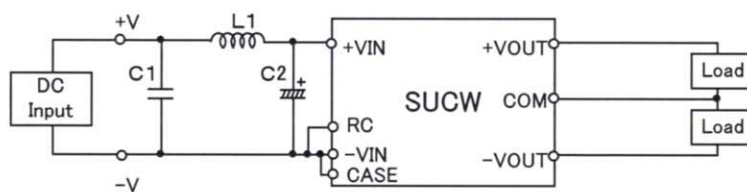


Fig.2 Testing circuitry 2

L1 : 2.2 $\mu$ H	CY3H-2R2	(KORIN ELECTRONICS)
C1: 50V 3.3 $\mu$ F	C3225JB1H335M	(TDK)
C2: 50V 100 $\mu$ F	UPM1H101M	(NICHICON)