

Frequency [MHz]	MeterReading (QP)[dBuV]	Ant. Type	Antenna Factor[dB/m]	Cable & Preamp[dB]	Level(QP) [dBuV/m]	Angle [°]	Height[cm]	Polar.	Limit [dBuV/m]	Margin [dB]
72.443	62.1	BL	5.9	-31.9	36.1	92	100	Vert.	50	13.9
59.735	63.7	BL	4.7	-32	36.4	88	122	Vert.	50	13.6

# COSEL

## Conditions

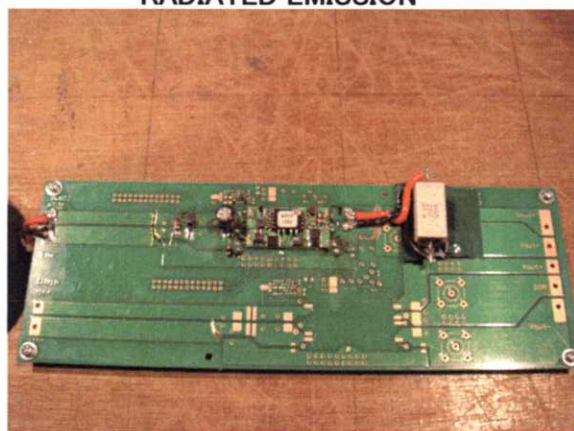
Test : EMI  
Model Name : SUS/SUW1024

○Photographs of Test Set-Up

LINE CONDUCTION



RADIATED EMISSION



○Testing circuitry

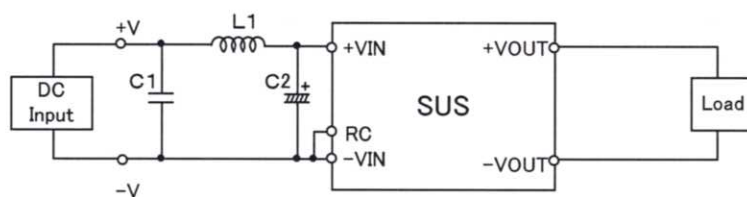


Fig.1 Testing circuitry 1

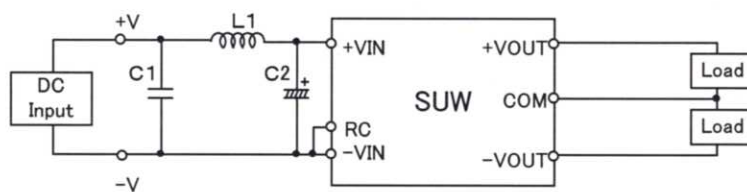


Fig.2 Testing circuitry 2

L1 : 2.2 $\mu$ H	CY3H-2R2	(KORIN ELECTRONICS)
C1: 50V 3.3 $\mu$ F	C3225JB1H335M	(TDK)
C2: 50V 100 $\mu$ F	UPM1H101M	(NICHICON)