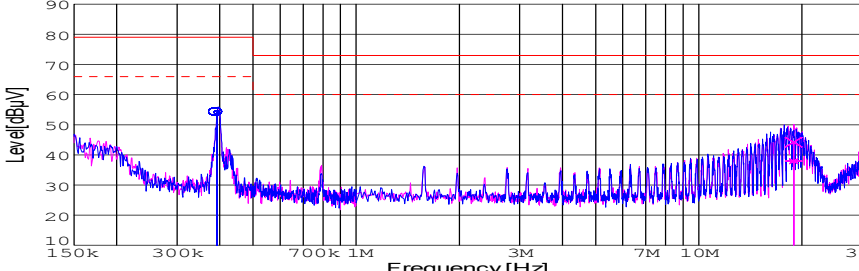
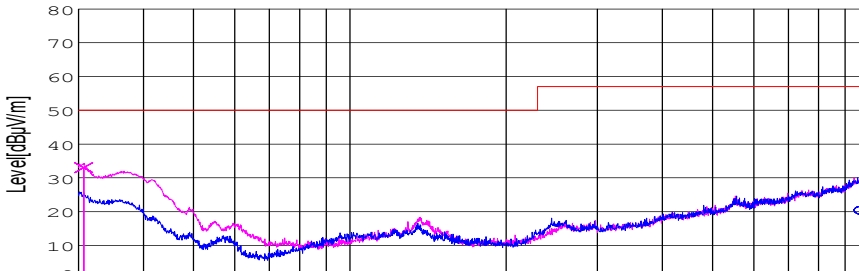


DATA SHEET							Date	17-May-05																																			
Model	SUS1R50505						Temp.	25degreeC																																			
Test	EMI Line conduction & Radiated emission						Humid.	45 %RH																																			
							Tested by	T.Ohara																																			
LINE CONDUCTION																																											
Model Name : SUS1R50505			Temp. : 25degreeC																																								
Model No. : -			Humi. : 45%																																								
Serial No. : -			Date : 2004/10/7 10:15																																								
Points : 2			Test Equip. : R3132,ESPC																																								
Detector : PEAK/QP/Ave.			Load Line : 10mm																																								
Line Mode : VA/VB			Comment : -																																								
Power Supply : DC 5V																																											
Limit1: [EN 55022] Class A(QP)																																											
Limit2: [EN 55022] Class A(Ave.)																																											
							Limit1(QP) : —																																				
							Limit2(Ave.) : - - -																																				
							VA(PEAK) : —																																				
							VB(PEAK) : —																																				
							VA(QP) : ○																																				
							VA(Ave.) : ○																																				
							VB(QP) : ×																																				
							VB(Ave.) : ×																																				
							Vin : DC5V																																				
							Iout : 0.3A																																				
<table><tr><th>Frequency [MHz]</th><th>Meter Reading (Ave.) [dBuV]</th><th>Meter Reading (QP) [dBuV]</th><th>Factor [dB]</th><th>Level(Ave.) [dBuV]</th><th>Level(QP) [dBuV]</th><th>Line</th><th>Limit(Ave.) [dBuV]</th><th>Limit(QP) [dBuV]</th><th>Margin(Ave.) [dB]</th><th>Margin(QP) [dB]</th></tr><tr><td>0.3923</td><td>44.2</td><td>44.3</td><td>9.9</td><td>54.1</td><td>54.2</td><td>VA</td><td>66</td><td>79</td><td>11.9</td><td>24.8</td></tr><tr><td>18.9148</td><td>27.6</td><td>33.9</td><td>10.3</td><td>37.9</td><td>44.2</td><td>VB</td><td>60</td><td>73</td><td>22.1</td><td>28.8</td></tr></table>											Frequency [MHz]	Meter Reading (Ave.) [dBuV]	Meter Reading (QP) [dBuV]	Factor [dB]	Level(Ave.) [dBuV]	Level(QP) [dBuV]	Line	Limit(Ave.) [dBuV]	Limit(QP) [dBuV]	Margin(Ave.) [dB]	Margin(QP) [dB]	0.3923	44.2	44.3	9.9	54.1	54.2	VA	66	79	11.9	24.8	18.9148	27.6	33.9	10.3	37.9	44.2	VB	60	73	22.1	28.8
Frequency [MHz]	Meter Reading (Ave.) [dBuV]	Meter Reading (QP) [dBuV]	Factor [dB]	Level(Ave.) [dBuV]	Level(QP) [dBuV]	Line	Limit(Ave.) [dBuV]	Limit(QP) [dBuV]	Margin(Ave.) [dB]	Margin(QP) [dB]																																	
0.3923	44.2	44.3	9.9	54.1	54.2	VA	66	79	11.9	24.8																																	
18.9148	27.6	33.9	10.3	37.9	44.2	VB	60	73	22.1	28.8																																	
RADIATED EMISSION																																											
Model Name : SUS1R50505			Temp. : 25degreeC																																								
Model No. : -			Humi. : 45%																																								
Serial No. : -			Date : 2005/5/10 15:39																																								
Points : 2			Test Equip. : R3132,ESPC																																								
Detector : PEAK/QP			Load Line : 10mm																																								
Polarization : Hori. & Vert.			Comment : -																																								
Power Supply : -																																											
Limit: [EN 55022] Class A<3m>																																											
							Limit(QP) : —																																				
							Horizontal(PEAK) : —																																				
							Vertical(PEAK) : —																																				
							Horizontal(QP) : ○																																				
							Vertical(QP) : ×																																				
							Vin : DC5V																																				
							Iout : 0.3A																																				
<table><tr><th>Frequency [MHz]</th><th>MeterReading (QP) [dBuV]</th><th>Ant. Type</th><th>Antenna Factor [dB/m]</th><th>Cable & Preamp [dB]</th><th>Level(QP) [dBuV/m]</th><th>Angle [°]</th><th>Height [cm]</th><th>Polar.</th><th>Limit [dBuV/m]</th><th>Margin [dB]</th></tr><tr><td>972.187</td><td>24.3</td><td>BL</td><td>25.3</td><td>-29.3</td><td>20.3</td><td>25</td><td>113</td><td>Hori.</td><td>57</td><td>36.7</td></tr><tr><td>30.688</td><td>47.5</td><td>BL</td><td>17.9</td><td>-32.3</td><td>33.1</td><td>196</td><td>100</td><td>Vert.</td><td>50</td><td>16.9</td></tr></table>											Frequency [MHz]	MeterReading (QP) [dBuV]	Ant. Type	Antenna Factor [dB/m]	Cable & Preamp [dB]	Level(QP) [dBuV/m]	Angle [°]	Height [cm]	Polar.	Limit [dBuV/m]	Margin [dB]	972.187	24.3	BL	25.3	-29.3	20.3	25	113	Hori.	57	36.7	30.688	47.5	BL	17.9	-32.3	33.1	196	100	Vert.	50	16.9
Frequency [MHz]	MeterReading (QP) [dBuV]	Ant. Type	Antenna Factor [dB/m]	Cable & Preamp [dB]	Level(QP) [dBuV/m]	Angle [°]	Height [cm]	Polar.	Limit [dBuV/m]	Margin [dB]																																	
972.187	24.3	BL	25.3	-29.3	20.3	25	113	Hori.	57	36.7																																	
30.688	47.5	BL	17.9	-32.3	33.1	196	100	Vert.	50	16.9																																	

COSEL

Conditions

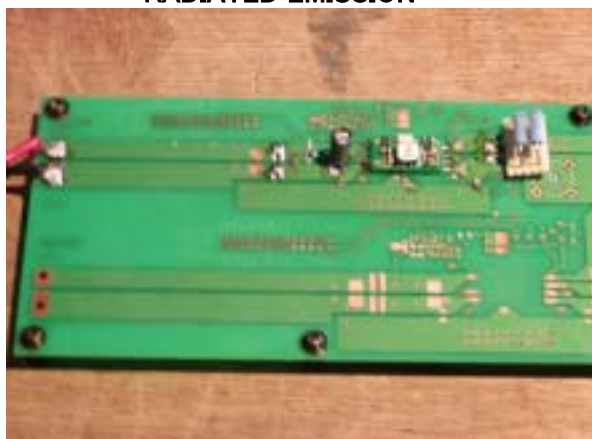
Test : EMI
Model Name : SUS/SUW 1R505

○Photographs of Test Set-Up

LINE CONDUCTION



RADIATED EMISSION



○Testing circuitry

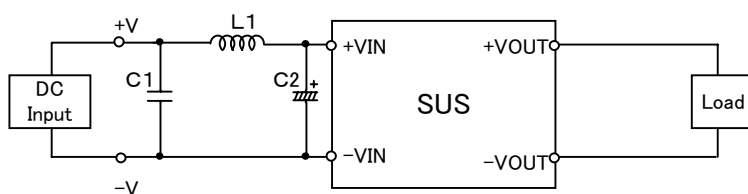


Fig.1 Testing circuitry 1

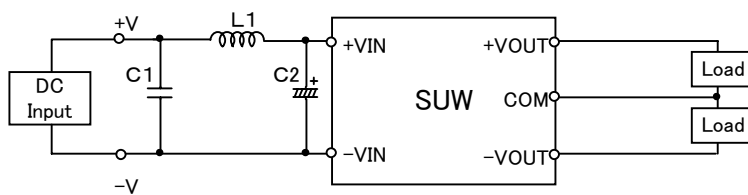


Fig.2 Testing circuitry 2

L1 :	2.2 μ H	GLF2518T2R2M	(TDK)
C1 :	16V 1 μ F	C2012JB1C105K	(TDK)
C2 :	16V 100 μ F	UPW1C101M	(NICHICON)