

DATA SHEET							Date	17-May-05		
Model	SUS1R50512						Temp.	25degreeC		
Test	EMI Line conduction & Radiated emission						Humid.	45 %RH		
							Tested by	T.Ohara		
LINE CONDUCTION										
Model Name : SUS1R50512			Temp. : 25degreeC							
Model No. : -			Humi. : 45%							
Serial No. : -			Date : 2004/10/7 10:54							
Points : 5			Test Equip. : R3132,ESPC							
Detector : PEAK/QP/Ave.			Load Line : 10mm							
Line Mode : VA/VB			Comment : -							
Power Supply : DC 5V										
Limit1: [EN 55022] Class A(QP)										
Limit2: [EN 55022] Class A(Ave.)										
							Vin : DC5V Iout : 0.13A			
Frequency [MHz]	Meter Reading (Ave.) [dBuV]	Meter Reading (QP) [dBuV]	Factor [dB]	Level(Ave.) [dBuV]	Level(QP) [dBuV]	Line	Limit(Ave.) [dBuV]	Limit(QP) [dBuV]	Margin(Ave.) [dB]	Margin(QP) [dB]
0.8346	25.6	31.9	9.9	35.5	41.8	VA	60	73	24.5	31.2
21.1431	23.5	29.9	10.3	33.8	40.2	VA	60	73	26.2	32.8
0.4159	43.9	44.1	9.9	53.8	54	VB	66	79	12.2	25
2.0691	29.3	32.4	9.9	39.2	42.3	VB	60	73	20.8	30.7
28.6314	21.9	29.2	10.4	32.3	39.6	VB	60	73	27.7	33.4

RADIATED EMISSION										
Model Name : SUS1R50512			Temp. : 25degreeC							
Model No. : -			Humi. : 45%							
Serial No. : -			Date : 2005/5/10 16:35							
Points : 2			Test Equip. : R3132,ESPC							
Detector : PEAK/QP			Load Line : 10mm							
Polarization : Vertical			Comment : -							
Power Supply : -										
Limit: [EN 55022] Class A<3m>										
							Vin : DC5V Iout : 0.13A			
Frequency [MHz]	MeterReading (QP) [dBuV]	Ant. Type	Antenna Factor [dB/m]	Cable & Preamp [dB]	Level(QP) [dBuV/m]	Angle [°]	Height [cm]	Polar.	Limit [dBuV/m]	Margin [dB]
38.209	58.2	BL	14	-32.2	40	176	102	Vert.	50	10
980.253	24.2	BL	25.2	-29.3	20.1	322	107	Vert.	57	36.9

# COSEL

## Conditions

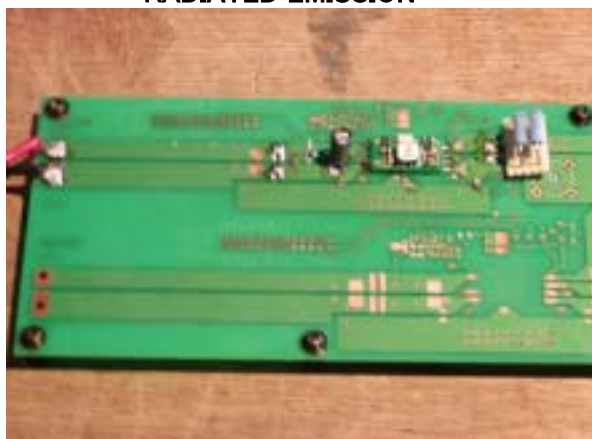
Test : EMI  
Model Name : SUS/SUW 1R505

○Photographs of Test Set-Up

LINE CONDUCTION



RADIATED EMISSION



○Testing circuitry

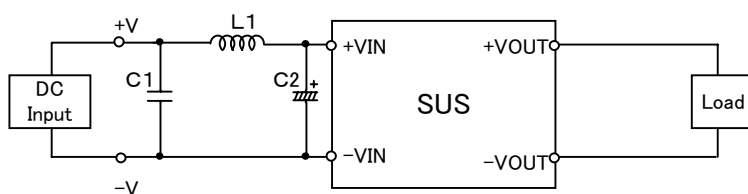


Fig.1 Testing circuitry 1

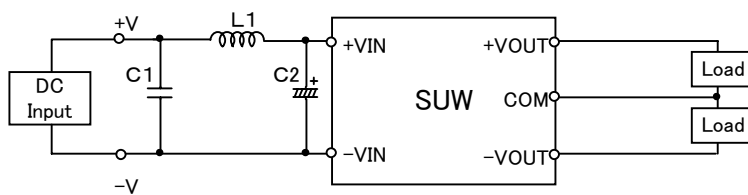


Fig.2 Testing circuitry 2

L1 :	2.2 $\mu$ H	GLF2518T2R2M	(TDK)
C1 :	16V    1 $\mu$ F	C2012JB1C105K	(TDK)
C2 :	16V    100 $\mu$ F	UPW1C101M	(NICHICON)