

DATA SHEET							Date	17-May-05																																														
Model	SUS1R51212						Temp.	25degreeC																																														
Test	EMI Line conduction & Radiated emission						Humid.	45 %RH																																														
							Tested by	T.Ohara																																														
LINE CONDUCTION																																																						
Model Name : SUS1R51212			Temp. : 25degreeC																																																			
Model No. : -			Humi. : 45%																																																			
Serial No. : -			Date : 2004/10/7 20:57																																																			
Points : 3			Test Equip. : R3132,ESPC																																																			
Detector : PEAK/QP/Ave.			Load Line : 10mm																																																			
Line Mode : VA/VB			Comment : -																																																			
Power Supply : DC 12V																																																						
Limit1: [EN 55022] Class A(QP)																																																						
Limit2: [EN 55022] Class A(Ave.)																																																						
							Vin : DC12V Iout : 0.13A																																															
<table><tr><th>Frequency [MHz]</th><th>Meter Reading (Ave.)[dBuV]</th><th>Meter Reading (QP)[dBuV]</th><th>Factor [dB]</th><th>Level(Ave.) [dBuV]</th><th>Level(QP) [dBuV]</th><th>Line</th><th>Limit(Ave.) [dBuV]</th><th>Limit(QP) [dBuV]</th><th>Margin(Ave.) [dB]</th><th>Margin(QP) [dB]</th></tr><tr><td>0.1712</td><td>17.4</td><td>22.8</td><td>9.8</td><td>27.2</td><td>32.6</td><td>VA</td><td>66</td><td>79</td><td>38.8</td><td>46.4</td></tr><tr><td>0.5768</td><td>33.2</td><td>32.8</td><td>9.9</td><td>43.1</td><td>42.7</td><td>VA</td><td>60</td><td>73</td><td>16.9</td><td>30.3</td></tr><tr><td>18.4614</td><td>18</td><td>23.4</td><td>10.2</td><td>28.2</td><td>33.6</td><td>VB</td><td>60</td><td>73</td><td>31.8</td><td>39.4</td></tr></table>											Frequency [MHz]	Meter Reading (Ave.)[dBuV]	Meter Reading (QP)[dBuV]	Factor [dB]	Level(Ave.) [dBuV]	Level(QP) [dBuV]	Line	Limit(Ave.) [dBuV]	Limit(QP) [dBuV]	Margin(Ave.) [dB]	Margin(QP) [dB]	0.1712	17.4	22.8	9.8	27.2	32.6	VA	66	79	38.8	46.4	0.5768	33.2	32.8	9.9	43.1	42.7	VA	60	73	16.9	30.3	18.4614	18	23.4	10.2	28.2	33.6	VB	60	73	31.8	39.4
Frequency [MHz]	Meter Reading (Ave.)[dBuV]	Meter Reading (QP)[dBuV]	Factor [dB]	Level(Ave.) [dBuV]	Level(QP) [dBuV]	Line	Limit(Ave.) [dBuV]	Limit(QP) [dBuV]	Margin(Ave.) [dB]	Margin(QP) [dB]																																												
0.1712	17.4	22.8	9.8	27.2	32.6	VA	66	79	38.8	46.4																																												
0.5768	33.2	32.8	9.9	43.1	42.7	VA	60	73	16.9	30.3																																												
18.4614	18	23.4	10.2	28.2	33.6	VB	60	73	31.8	39.4																																												
RADIATED EMISSION																																																						
Model Name : SUS1R51212			Temp. : 25degreeC																																																			
Model No. : -			Humi. : 45%																																																			
Serial No. : -			Date : 2005/5/10 12:04																																																			
Points : 3			Test Equip. : R3132,ESPC																																																			
Detector : PEAK/QP			Load Line : 10mm																																																			
Polarization : Hori. & Vert.			Comment : -																																																			
Power Supply : DC 12V																																																						
Limit: [EN 55022] Class A<3m>																																																						
							Vin : DC12V Iout : 0.13A																																															
<table><tr><th>Frequency [MHz]</th><th>MeterReading (QP)[dBuV]</th><th>Ant. Type</th><th>Antenna Factor[dB/m]</th><th>Cable & Preamp[dB]</th><th>Level(QP) [dBuV/m]</th><th>Angle [°]</th><th>Height[cm]</th><th>Polar.</th><th>Limit [dBuV/m]</th><th>Margin [dB]</th></tr><tr><td>983.335</td><td>24.1</td><td>BL</td><td>25.3</td><td>-29.3</td><td>20.1</td><td>328</td><td>128</td><td>Hori.</td><td>57</td><td>36.9</td></tr><tr><td>30.302</td><td>38.8</td><td>BL</td><td>18.1</td><td>-32.3</td><td>24.6</td><td>141</td><td>102</td><td>Vert.</td><td>50</td><td>25.4</td></tr><tr><td>191.326</td><td>44.6</td><td>BL</td><td>8.3</td><td>-31.3</td><td>21.6</td><td>280</td><td>107</td><td>Vert.</td><td>50</td><td>28.4</td></tr></table>											Frequency [MHz]	MeterReading (QP)[dBuV]	Ant. Type	Antenna Factor[dB/m]	Cable & Preamp[dB]	Level(QP) [dBuV/m]	Angle [°]	Height[cm]	Polar.	Limit [dBuV/m]	Margin [dB]	983.335	24.1	BL	25.3	-29.3	20.1	328	128	Hori.	57	36.9	30.302	38.8	BL	18.1	-32.3	24.6	141	102	Vert.	50	25.4	191.326	44.6	BL	8.3	-31.3	21.6	280	107	Vert.	50	28.4
Frequency [MHz]	MeterReading (QP)[dBuV]	Ant. Type	Antenna Factor[dB/m]	Cable & Preamp[dB]	Level(QP) [dBuV/m]	Angle [°]	Height[cm]	Polar.	Limit [dBuV/m]	Margin [dB]																																												
983.335	24.1	BL	25.3	-29.3	20.1	328	128	Hori.	57	36.9																																												
30.302	38.8	BL	18.1	-32.3	24.6	141	102	Vert.	50	25.4																																												
191.326	44.6	BL	8.3	-31.3	21.6	280	107	Vert.	50	28.4																																												

COSEL

Conditions

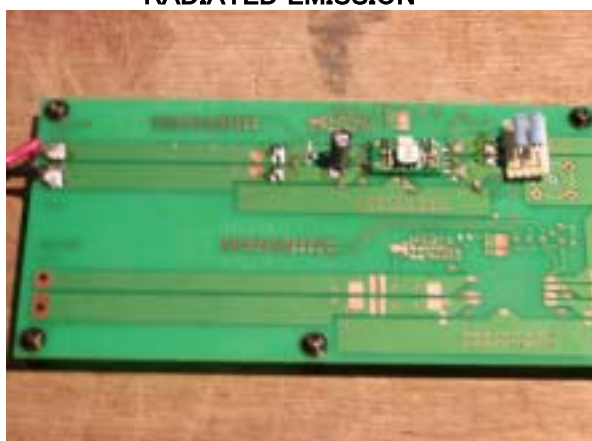
Test : EMI
Model Name : SUS/SUW 1R512

○Photographs of Test Set-Up

LINE CONDUCTION



RADIATED EMISSION



○Testing circuitry

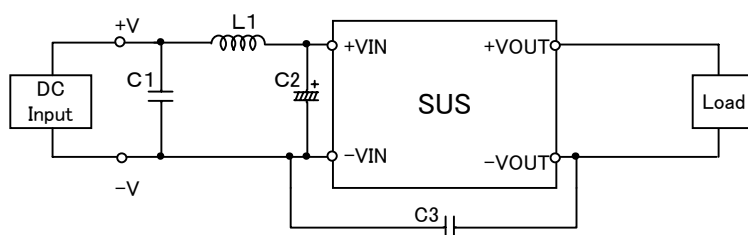


Fig.1 Testing circuitry 1

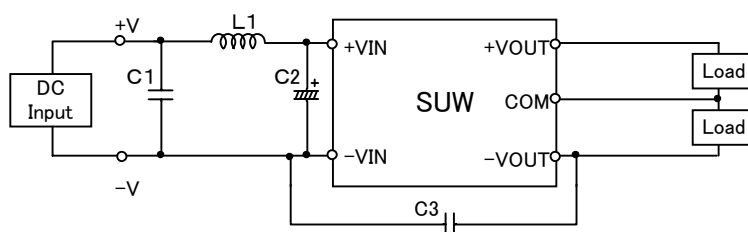


Fig.2 Testing circuitry 2

L1 :	4.7 μ H	GLF2518T4R7M	(TDK)
C1 :	25V 1 μ F	C2012JB1E105K	(TDK)
C2 :	25V 47 μ F	UPW1E470M	(NICHICON)
C3 :	1000V 100pF	GRM31AR33A101K	(MURATA)