

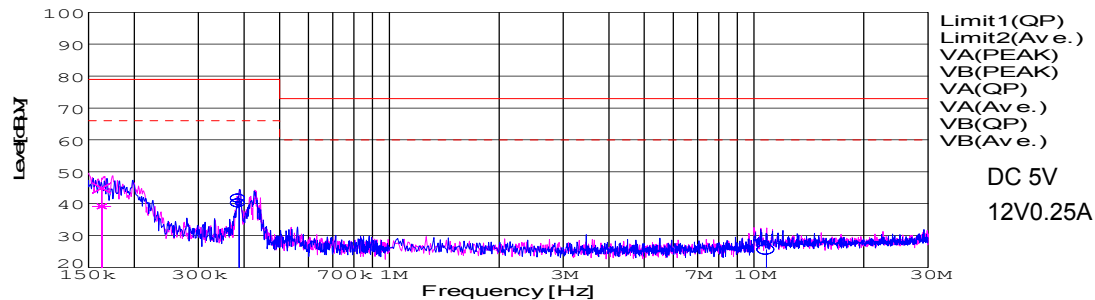
DATA SHEET

Date		12-May-05	
Model	SUS30512	Temp.	25 degreeC
Test	EMI Line conduction & Radiated emission	Humid.	45 %RH
		Tested by	T.Ohara

LINE CONDUCTION

Model Name : SUS30512
 Model No. :
 Serial No. :
 Points : 3
 Detector : PEAK/QP/Ave.
 Line Mode : VA/VB
 Power Supply : DC 5V
 Limit1: [EN 55022] Class A(QP)
 Limit2: [EN 55022] Class A(Ave.)

Temp. : 25
 Humi. : 45
 Date : 2005/5/12 16:15
 Test Equip. : R3132,ESPC
 Load Line : 10mm
 Comment : T.Ohara

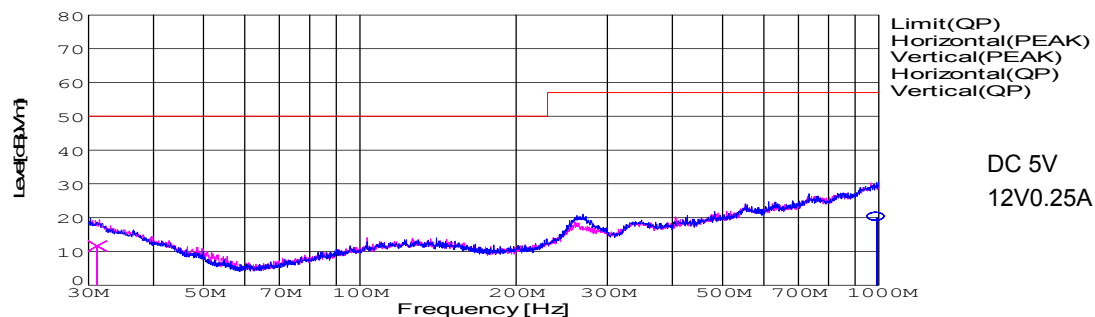


Frequency [MHz]	Meter Reading (Ave.) [dBuV]	Meter Reading (QP) [dBuV]	Factor [dB]	Level(Ave.) [dBuV]	Level(QP) [dBuV]	Line	Limit(Ave.) [dBuV]	Limit(QP) [dBuV]	Margin(Ave.) [dB]	Margin(QP) [dB]
0.3876	30	31.8	9.9	39.9	41.7	VA	66	79	26.1	37.3
10.8196	5.8	15.4	10.1	15.9	25.5	VA	60	73	44.1	47.5
0.1628	29.4	35.1	9.8	39.2	44.9	VB	66	79	26.8	34.1

RADIATED EMISSION

Model Name : SUS30512
 Model No. :
 Serial No. :
 Points : 2
 Detector : PEAK/QP
 Polarization : Hori. & Vert.
 Power Supply : DC 5V
 Limit: [EN 55022] Class A<3m>

Temp. : 25
 Humi. : 45
 Date : 2005/5/12 16:43
 Test Equip. : R3132,ESPC
 Load Line : 10mm
 Comment :



Frequency [MHz]	Meter Reading (QP) [dBuV]	Ant. Type	Antenna Factor [dB/m]	Cable & Preamp [dB]	Level(QP) [dBuV/m]	Angle [°]	Height [cm]	Polar.	Limit [dBuV/m]	Margin [dB]
992.03	23.9	BL	25.4	-29.3	20	24	149	Hori.	57	37
31.188	26.3	BL	17.6	-32.3	11.6	4	118	Vert.	50	38.4

COSEL

Conditions

Test : EMI
Model Name : SUS/SUW 305

○Photographs of Test Set-Up

LINE CONDUCTION



RADIATED EMISSION



○Testing circuitry

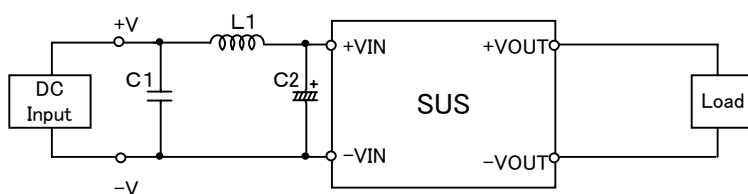


Fig.1 Testing circuitry 1

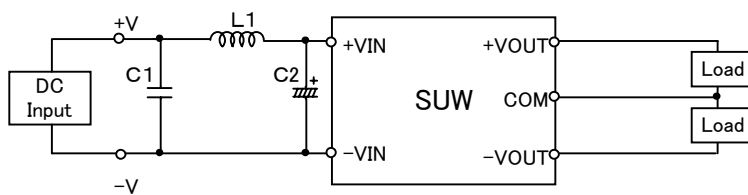


Fig.2 Testing circuitry 2

L1 :	2.2 μ H	CY3H-2R2	(KORIN ELECTRONICS)
C1 :	16V 1 μ F	C2012JB1C105K	(TDK)
C2 :	16V 220 μ F	UPW1C221M	(NICHICON)