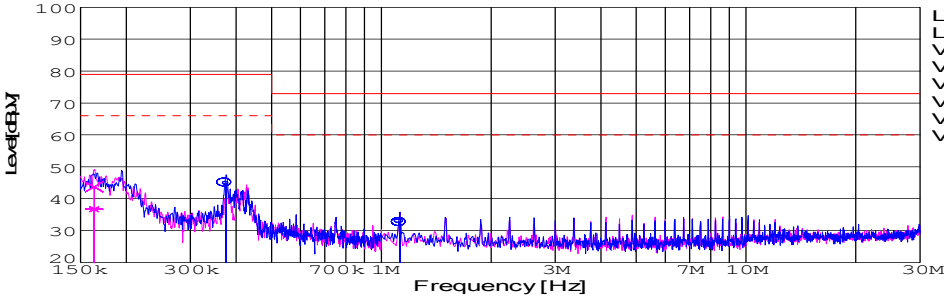
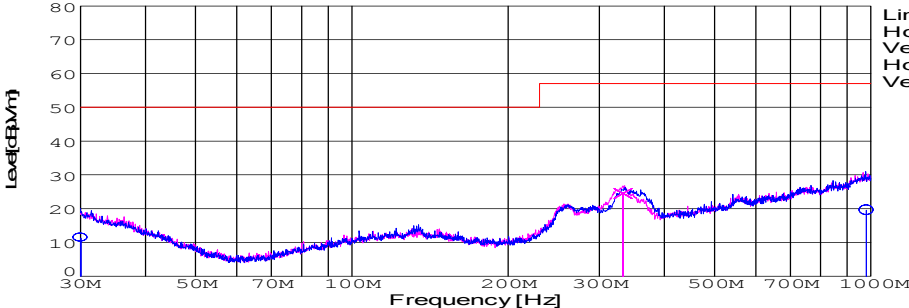


DATA SHEET							Date	16-May-05		
Model	SUS32412						Temp.	25 degreeC		
Test	EMI Line conduction & Radiated emission						Humid.	45 %RH		
							Tested by	T.Ohara		
LINE CONDUCTION										
Model Name : SUS32412							Temp.	: 25		
Model No. :							Humi.	: 45		
Serial No. :							Date	: 2005/5/16 15:16		
Points : 3							Test Equip.	: R3132,ESPC		
Detector : PEAK/QP/Ave.							Load Line	: 10mm		
Line Mode : VA/VB							Comment	: T.Ohara		
Power Supply : DC 24V										
Limit1: [EN 55022] Class A(QP)										
Limit2: [EN 55022] Class A(Ave.)										
							Limit1(QP) Limit2(Ave.) VA(PEAK) VB(PEAK) VA(QP) VA(Ave.) VB(QP) VB(Ave.)			
							DC 24V 12V0.25A			
Frequency [MHz]	Meter Reading (Ave.) [dBuV]	Meter Reading (QP) [dBuV]	Factor [dB]	Level(Ave.) [dBuV]	Level(QP) [dBuV]	Line	Limit(Ave.) [dBuV]	Limit(QP) [dBuV]	Margin(Ave.) [dB]	Margin(QP) [dB]
0.3751	35	35	9.9	44.9	44.9	VA	66	79	21.1	34.1
1.1245	22.9	22.7	9.9	32.8	32.6	VA	60	73	27.2	40.4
0.1634	26.9	34	9.8	36.7	43.8	VB	66	79	29.3	35.2

RADIATED EMISSION										
Model Name : SUS32412							Temp.	: 25		
Model No. :							Humi.	: 45		
Serial No. :							Date	: 2005/5/16 15:51		
Points : 3							Test Equip.	: R3132,ESPC		
Detector : PEAK/QP							Load Line	: 10mm		
Polarization : Hori. & Vert.							Comment	:		
Power Supply : DC 24V										
Limit: [EN 55022] Class A<3m>										
							Limit(QP) Horizontal(PEAK) Vertical(PEAK) Horizontal(QP) Vertical(QP)			
							DC 24V 12V0.25A			
Frequency [MHz]	MeterReading (QP) [dBuV]	Ant. Type	Antenna Factor [dB/m]	Cable & Preamp [dB]	Level(QP) [dBuV/m]	Angle [°]	Height [cm]	Polar.	Limit [dBuV/m]	Margin [dB]
980.449	23.6	BL	25.2	-29.3	19.5	235	117	Hori.	57	37.5
30.078	25.4	BL	18.2	-32.3	11.3	298	131	Hori.	50	38.7
333.136	41.4	BL	13.9	-30.8	24.5	19	102	Vert.	57	32.5



## Conditions

Test : EMI  
Model Name : SUS/SUW 324

○Photographs of Test Set-Up

LINE CONDUCTION



RADIATED EMISSION



○Testing circuitry

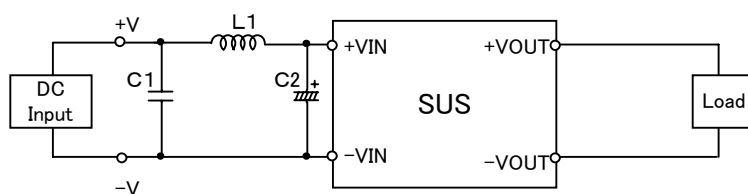


Fig.1 Testing circuitry 1

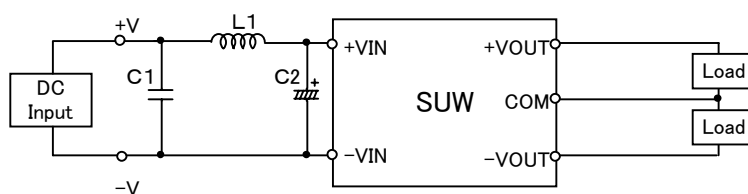


Fig.2 Testing circuitry 2

L1 :	10 $\mu$ H	CY3H-100	(KORIN ELECTRONICS)
C1 :	50V 0.47 $\mu$ F	C2012JB1H474K	(TDK)
C2 :	50V 47 $\mu$ F	UPW1H470M	(NICHICON)