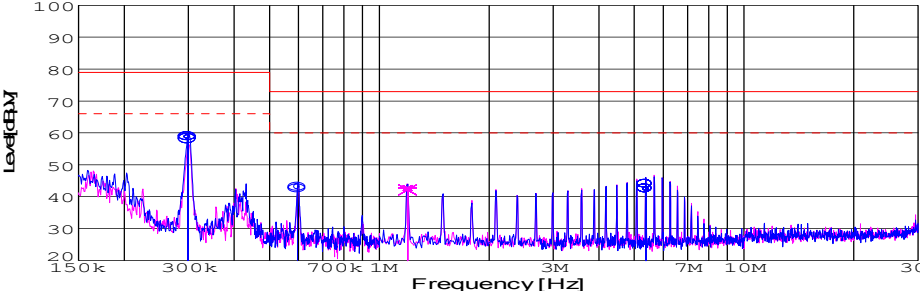
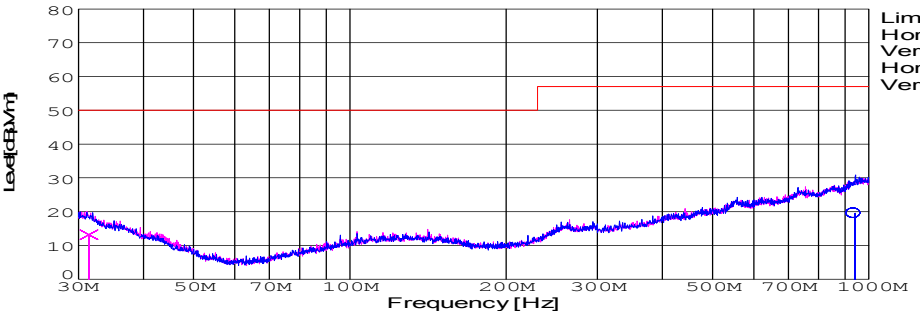


DATA SHEET							Date	13-May-05		
Model	SUS34805						Temp.	25 degreeC		
Test	EMI Line conduction & Radiated emission						Humid.	45 %RH		
							Tested by	T.Ohara		
LINE CONDUCTION										
Model Name : SUS34805			Temp. : 25							
Model No. :			Humi. : 45							
Serial No. :			Date : 2005/5/13 15:28							
Points : 4			Test Equip. : R3132,ESPC							
Detector : PEAK/QP/Ave.			Load Line : 10mm							
Line Mode : VA/VB			Comment : T.Ohara							
Power Supply : DC 48V										
Limit1: [EN 55022] Class A(QP)										
Limit2: [EN 55022] Class A(Ave.)										
							Limit1(QP) Limit2(Ave.) VA(PEAK) VB(PEAK) VA(QP) VA(Ave.) VB(QP) VB(Ave.)			
							DC 48V 5V0.6A			
Frequency [MHz]	Meter Reading (Ave.) [dBuV]	Meter Reading (QP) [dBuV]	Factor [dB]	Level(Ave.) [dBuV]	Level(QP) [dBuV]	Line	Limit(Ave.) [dBuV]	Limit(QP) [dBuV]	Margin(Ave.) [dB]	Margin(QP) [dB]
0.2988	49	48.3	9.8	58.8	58.1	VA	66	79	7.2	20.9
0.5966	33.1	32.5	9.9	43	42.4	VA	60	73	17	30.6
5.3831	32.5	34.2	10	42.5	44.2	VA	60	73	17.5	28.8
1.1958	32.9	32.3	9.9	42.8	42.2	VB	60	73	17.2	30.8
RADIATED EMISSION										
Model Name : SUS34805			Temp. : 25							
Model No. :			Humi. : 45							
Serial No. :			Date : 2005/5/13 16:26							
Points : 2			Test Equip. : R3132,ESPC							
Detector : PEAK/QP			Load Line : 10mm							
Polarization : Hori. & Vert.			Comment :							
Power Supply : DC 48V										
Limit: [EN 55022] Class A<3m>										
							Limit(QP) Horizontal(PEAK) Vertical(PEAK) Horizontal(QP) Vertical(QP)			
							DC 48V 5V0.6A			
Frequency [MHz]	MeterReading (QP) [dBuV]	Ant. Type	Antenna Factor [dB/m]	Cable & Preamp [dB]	Level(QP) [dBuV/m]	Angle [°]	Height [cm]	Polar.	Limit [dBuV/m]	Margin [dB]
940.231	23.9	BL	25	-29.3	19.6	16	147	Hori.	57	37.4
31.428	27.9	BL	17.5	-32.2	13.2	29	134	Vert.	50	36.8

COSEL

Conditions

Test : EMI
Model Name : SUS/SUW 348

○Photographs of Test Set-Up

LINE CONDUCTION



RADIATED EMISSION



○Testing circuitry

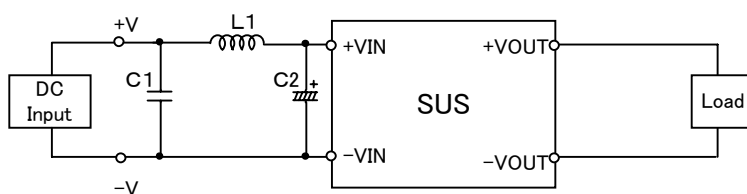


Fig.1 Testing circuitry 1

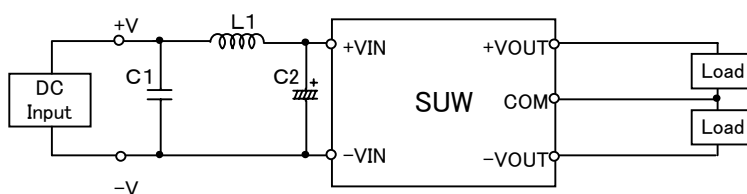


Fig.2 Testing circuitry 2

L1 :	10 μ H	CY3H-100	(KORIN ELECTRONICS)
C1 :	100V 0.47 μ F	C3216JB2A474K	(TDK)
C2 :	100V 22 μ F	UPW2A220M	(NICHICON)