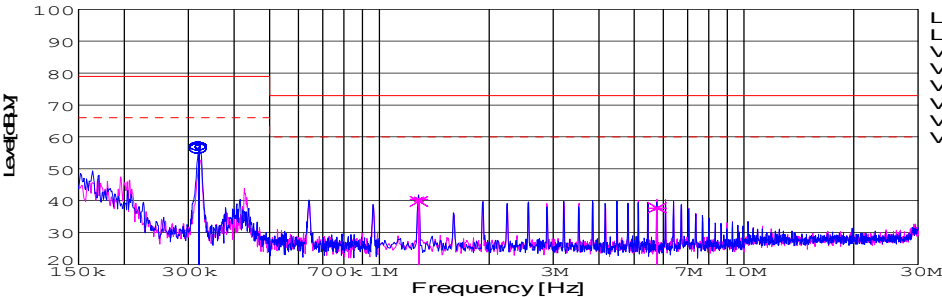
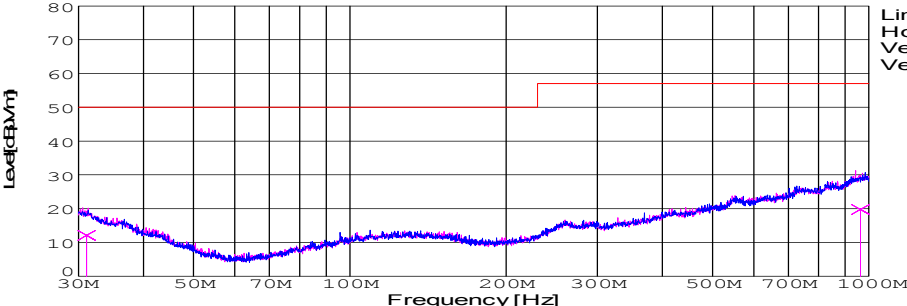


DATA SHEET							Date	13-May-05		
Model	SUS34812						Temp.	25 degreeC		
Test	EMI Line conduction & Radiated emission						Humid.	45 %RH		
							Tested by	T.Ohara		
LINE CONDUCTION										
Model Name : SUS34812			Temp. : 25							
Model No. :			Humi. : 45							
Serial No. :			Date : 2005/5/13 16:42							
Points : 3			Test Equip. : R3132,ESPC							
Detector : PEAK/QP/Ave.			Load Line : 10mm							
Line Mode : VA/VB			Comment : T.Ohara							
Power Supply : DC 48V										
Limit1: [EN 55022] Class A(QP)										
Limit2: [EN 55022] Class A(Ave.)										
							Limit1(QP) Limit2(Ave.) VA(PEAK) VB(PEAK) VA(QP) VA(Ave.) VB(QP) VB(Ave.)			
							DC 48V 12V0.25A			
Frequency [MHz]	Meter Reading (Ave.) [dBuV]	Meter Reading (QP) [dBuV]	Factor [dB]	Level(Ave.) [dBuV]	Level(QP) [dBuV]	Line	Limit(Ave.) [dBuV]	Limit(QP) [dBuV]	Margin(Ave.) [dB]	Margin(QP) [dB]
0.3206	47	46.3	9.8	56.8	56.1	VA	66	79	9.2	22.9
1.2835	30.5	29.9	9.9	40.4	39.8	VB	60	73	19.6	33.2
5.7791	27.7	27.8	10	37.7	37.8	VB	60	73	22.3	35.2

RADIATED EMISSION										
Model Name : SUS34812			Temp. : 25							
Model No. :			Humi. : 45							
Serial No. :			Date : 2005/5/13 17:18							
Points : 2			Test Equip. : R3132,ESPC							
Detector : PEAK/QP			Load Line : 10mm							
Polarization : Vertical			Comment :							
Power Supply : DC 48V										
Limit: [EN 55022] Class A<3m>										
							Limit(QP) Horizontal(PEAK) Vertical(PEAK) Vertical(QP)			
							DC 48V 12V0.25A			
Frequency [MHz]	MeterReading (QP) [dBuV]	Ant. Type	Antenna Factor [dB/m]	Cable & Preamp [dB]	Level(QP) [dBuV/m]	Angle [°]	Height [cm]	Polar.	Limit [dBuV/m]	Margin [dB]
963.332	23.9	BL	25.2	-29.3	19.8	336	153	Vert.	57	37.2
31.111	26.7	BL	17.7	-32.3	12.1	220	126	Vert.	50	37.9

COSEL

Conditions

Test : EMI
Model Name : SUS/SUW 348

○Photographs of Test Set-Up

LINE CONDUCTION



RADIATED EMISSION



○Testing circuitry

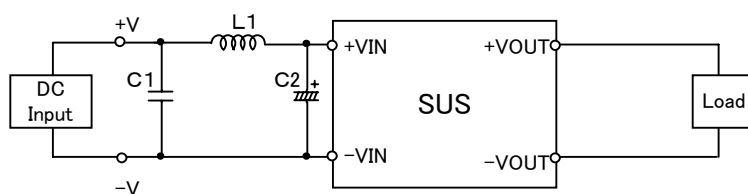


Fig.1 Testing circuitry 1

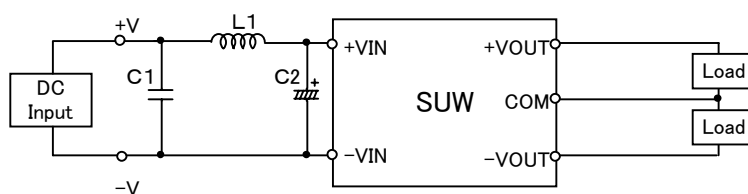


Fig.2 Testing circuitry 2

L1 :	10 μ H	CY3H-100	(KORIN ELECTRONICS)
C1 :	100V 0.47 μ F	C3216JB2A474K	(TDK)
C2 :	100V 22 μ F	UPW2A220M	(NICHICON)