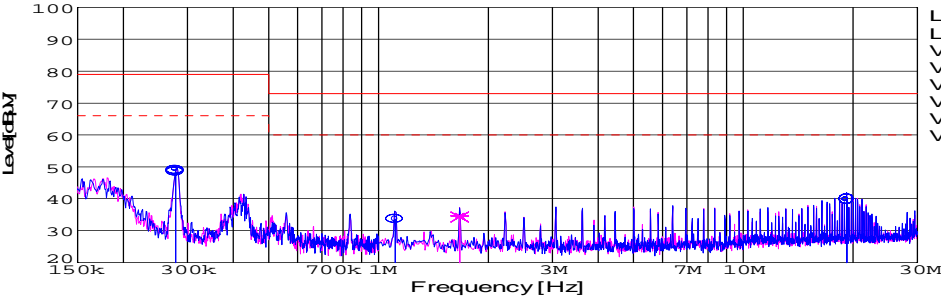
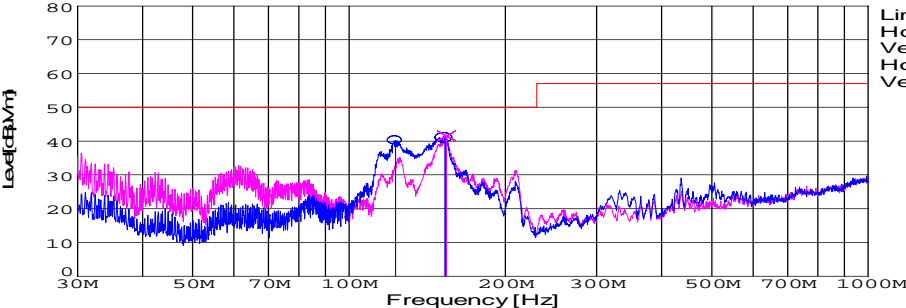


DATA SHEET							Date	04-Feb-09																																																									
Model	SUTS101205						Temp.	25 degreeC																																																									
Test	EMI Line conduction & Radiated emission						Humid.	45 %RH																																																									
							Tested by	D.Joboji																																																									
LINE CONDUCTION																																																																	
Model Name : SUTS101205			Temp. : 25																																																														
Model No. :			Humi. : 45																																																														
Serial No. :			Date : 2009/2/4 8:50																																																														
Points : 4			Test Equip. : R3132,ESPC																																																														
Detector : PEAK/QP/Ave.			Load Line : 50mm																																																														
Line Mode : VA/VB			Comment :																																																														
Power Supply : DC 12V																																																																	
Limit1: [EN 55022] Class A(QP)																																																																	
Limit2: [EN 55022] Class A(Ave.)																																																																	
							Limit1(QP) Limit2(Ave.) VA(PEAK) VB(PEAK) VA(QP) VA(Ave.) VB(QP) VB(Ave.) DC 12V																																																										
<table><tr><th>Frequency [MHz]</th><th>Meter Reading (Ave.) [dBuV]</th><th>Meter Reading (QP) [dBuV]</th><th>Factor [dB]</th><th>Level(Ave.) [dBuV]</th><th>Level(QP) [dBuV]</th><th>Line</th><th>Limit(Ave.) [dBuV]</th><th>Limit(QP) [dBuV]</th><th>Margin(Ave.) [dB]</th><th>Margin(QP) [dB]</th></tr><tr><td>0.2779</td><td>39.4</td><td>38.8</td><td>9.8</td><td>49.2</td><td>48.6</td><td>VA</td><td>66</td><td>79</td><td>16.8</td><td>30.4</td></tr><tr><td>1.1114</td><td>23.7</td><td>23.6</td><td>9.9</td><td>33.6</td><td>33.5</td><td>VA</td><td>60</td><td>73</td><td>26.4</td><td>39.5</td></tr><tr><td>19.193</td><td>29.6</td><td>29.5</td><td>10.3</td><td>39.9</td><td>39.8</td><td>VA</td><td>60</td><td>73</td><td>20.1</td><td>33.2</td></tr><tr><td>1.6699</td><td>24.7</td><td>24.4</td><td>9.9</td><td>34.6</td><td>34.3</td><td>VB</td><td>60</td><td>73</td><td>25.4</td><td>38.7</td></tr></table>											Frequency [MHz]	Meter Reading (Ave.) [dBuV]	Meter Reading (QP) [dBuV]	Factor [dB]	Level(Ave.) [dBuV]	Level(QP) [dBuV]	Line	Limit(Ave.) [dBuV]	Limit(QP) [dBuV]	Margin(Ave.) [dB]	Margin(QP) [dB]	0.2779	39.4	38.8	9.8	49.2	48.6	VA	66	79	16.8	30.4	1.1114	23.7	23.6	9.9	33.6	33.5	VA	60	73	26.4	39.5	19.193	29.6	29.5	10.3	39.9	39.8	VA	60	73	20.1	33.2	1.6699	24.7	24.4	9.9	34.6	34.3	VB	60	73	25.4	38.7
Frequency [MHz]	Meter Reading (Ave.) [dBuV]	Meter Reading (QP) [dBuV]	Factor [dB]	Level(Ave.) [dBuV]	Level(QP) [dBuV]	Line	Limit(Ave.) [dBuV]	Limit(QP) [dBuV]	Margin(Ave.) [dB]	Margin(QP) [dB]																																																							
0.2779	39.4	38.8	9.8	49.2	48.6	VA	66	79	16.8	30.4																																																							
1.1114	23.7	23.6	9.9	33.6	33.5	VA	60	73	26.4	39.5																																																							
19.193	29.6	29.5	10.3	39.9	39.8	VA	60	73	20.1	33.2																																																							
1.6699	24.7	24.4	9.9	34.6	34.3	VB	60	73	25.4	38.7																																																							
RADIATED EMISSION																																																																	
Model Name : SUTS101205			Temp. : 25																																																														
Model No. :			Humi. : 45																																																														
Serial No. :			Date : 2009/2/4 9:15																																																														
Points : 3			Test Equip. : R3132,ESPC																																																														
Detector : PEAK/QP			Load Line : 50mm																																																														
Polarization : Hori. & Vert.			Comment :																																																														
Power Supply : DC 12V																																																																	
Limit: [EN 55022] Class A<3m>																																																																	
							Limit(QP) Horizontal(PEAK) Vertical(PEAK) Horizontal(QP) Vertical(QP) DC 12V																																																										
<table><tr><th>Frequency [MHz]</th><th>MeterReading (QP) [dBuV]</th><th>Ant. Type</th><th>Antenna Factor [dB/m]</th><th>Cable & Preamp [dB]</th><th>Level(QP) [dBuV/m]</th><th>Angle [°]</th><th>Height [cm]</th><th>Polar.</th><th>Limit [dBuV/m]</th><th>Margin [dB]</th></tr><tr><td>122.962</td><td>60.8</td><td>BL</td><td>11</td><td>-31.7</td><td>40.1</td><td>193</td><td>146</td><td>Hori.</td><td>50</td><td>9.9</td></tr><tr><td>153.195</td><td>62</td><td>BL</td><td>10.4</td><td>-31.5</td><td>40.9</td><td>215</td><td>157</td><td>Hori.</td><td>50</td><td>9.1</td></tr><tr><td>154.042</td><td>62.8</td><td>BL</td><td>10.3</td><td>-31.5</td><td>41.6</td><td>101</td><td>156</td><td>Vert.</td><td>50</td><td>8.4</td></tr></table>											Frequency [MHz]	MeterReading (QP) [dBuV]	Ant. Type	Antenna Factor [dB/m]	Cable & Preamp [dB]	Level(QP) [dBuV/m]	Angle [°]	Height [cm]	Polar.	Limit [dBuV/m]	Margin [dB]	122.962	60.8	BL	11	-31.7	40.1	193	146	Hori.	50	9.9	153.195	62	BL	10.4	-31.5	40.9	215	157	Hori.	50	9.1	154.042	62.8	BL	10.3	-31.5	41.6	101	156	Vert.	50	8.4											
Frequency [MHz]	MeterReading (QP) [dBuV]	Ant. Type	Antenna Factor [dB/m]	Cable & Preamp [dB]	Level(QP) [dBuV/m]	Angle [°]	Height [cm]	Polar.	Limit [dBuV/m]	Margin [dB]																																																							
122.962	60.8	BL	11	-31.7	40.1	193	146	Hori.	50	9.9																																																							
153.195	62	BL	10.4	-31.5	40.9	215	157	Hori.	50	9.1																																																							
154.042	62.8	BL	10.3	-31.5	41.6	101	156	Vert.	50	8.4																																																							

DATA SHEET

Model	Circuit used for measurement
Test	EMI Line conduction & Radiated emission

1. Line conduction



2. Radiated emission





Conditions

Test : EMI
Model Name : SUTS/SUTW1012□□

○Photographs of Test Set-Up

LINE CONDUCTION



RADIATED EMISSION



○Testing circuitry

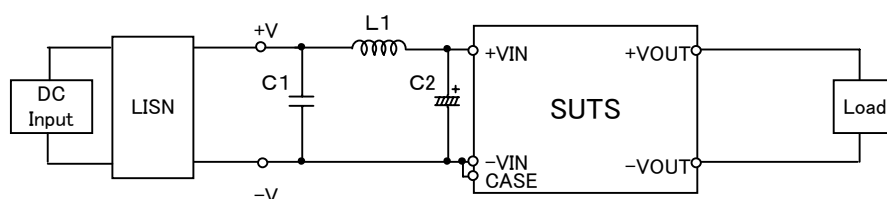


Fig.1 Testing circuitry 1

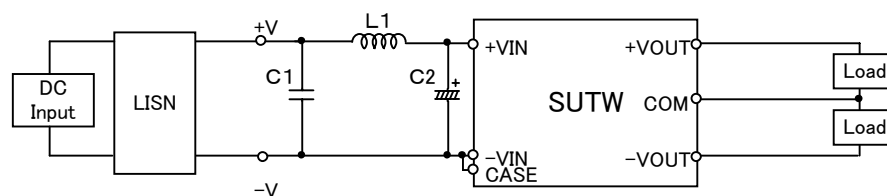


Fig.2 Testing circuitry 2

L1 :	1 μ H	CI4C-1R0	(KORIN ELECTRONICS)
C1 :	25V 10 μ F	C3225JB1E106M	(TDK)
C2 :	25V 220 μ F	UPW1E221M	(NICHICON)