

DATA SHEET							Date	27-Jan-09																																																									
Model	SUTS102412						Temp.	25 degreeC																																																									
Test	EMI Line conduction & Radiated emission						Humid.	45 %RH																																																									
							Tested by	D.Joboji																																																									
LINE CONDUCTION																																																																	
Model Name : SUTS102412			Temp. : 25																																																														
Model No. :			Humi. : 45																																																														
Serial No. :			Date : 2009/1/27 9:23																																																														
Points : 4			Test Equip. : R3132,ESPC																																																														
Detector : PEAK/QP/Ave.			Load Line : 50mm																																																														
Line Mode : VA/VB			Comment :																																																														
Power Supply : DC 24V																																																																	
Limit1: [EN 55022] Class A(QP)																																																																	
Limit2: [EN 55022] Class A(Ave.)																																																																	
							Limit1(QP) Limit2(Ave.) VA(PEAK) VB(PEAK) VA(QP) VA(Ave.) VB(QP) VB(Ave.)		DC 24V																																																								
<table><tr><th>Frequency [MHz]</th><th>Meter Reading (Ave.) [dBuV]</th><th>Meter Reading (QP) [dBuV]</th><th>Factor [dB]</th><th>Level(Ave.) [dBuV]</th><th>Level(QP) [dBuV]</th><th>Line</th><th>Limit(Ave.) [dBuV]</th><th>Limit(QP) [dBuV]</th><th>Margin(Ave.) [dB]</th><th>Margin(QP) [dB]</th></tr><tr><td>0.2686</td><td>38.3</td><td>37.8</td><td>9.8</td><td>48.1</td><td>47.6</td><td>VA</td><td>66</td><td>79</td><td>17.9</td><td>31.4</td></tr><tr><td>1.0715</td><td>27.1</td><td>26.8</td><td>9.9</td><td>37</td><td>36.7</td><td>VA</td><td>60</td><td>73</td><td>23</td><td>36.3</td></tr><tr><td>1.6068</td><td>28.4</td><td>27.9</td><td>9.9</td><td>38.3</td><td>37.8</td><td>VB</td><td>60</td><td>73</td><td>21.7</td><td>35.2</td></tr><tr><td>2.9441</td><td>28.3</td><td>27.9</td><td>9.9</td><td>38.2</td><td>37.8</td><td>VB</td><td>60</td><td>73</td><td>21.8</td><td>35.2</td></tr></table>											Frequency [MHz]	Meter Reading (Ave.) [dBuV]	Meter Reading (QP) [dBuV]	Factor [dB]	Level(Ave.) [dBuV]	Level(QP) [dBuV]	Line	Limit(Ave.) [dBuV]	Limit(QP) [dBuV]	Margin(Ave.) [dB]	Margin(QP) [dB]	0.2686	38.3	37.8	9.8	48.1	47.6	VA	66	79	17.9	31.4	1.0715	27.1	26.8	9.9	37	36.7	VA	60	73	23	36.3	1.6068	28.4	27.9	9.9	38.3	37.8	VB	60	73	21.7	35.2	2.9441	28.3	27.9	9.9	38.2	37.8	VB	60	73	21.8	35.2
Frequency [MHz]	Meter Reading (Ave.) [dBuV]	Meter Reading (QP) [dBuV]	Factor [dB]	Level(Ave.) [dBuV]	Level(QP) [dBuV]	Line	Limit(Ave.) [dBuV]	Limit(QP) [dBuV]	Margin(Ave.) [dB]	Margin(QP) [dB]																																																							
0.2686	38.3	37.8	9.8	48.1	47.6	VA	66	79	17.9	31.4																																																							
1.0715	27.1	26.8	9.9	37	36.7	VA	60	73	23	36.3																																																							
1.6068	28.4	27.9	9.9	38.3	37.8	VB	60	73	21.7	35.2																																																							
2.9441	28.3	27.9	9.9	38.2	37.8	VB	60	73	21.8	35.2																																																							
RADIATED EMISSION																																																																	
Model Name : SUTS102412			Temp. : 25																																																														
Model No. :			Humi. : 45																																																														
Serial No. :			Date : 2009/1/27 9:40																																																														
Points : 2			Test Equip. : R3132,ESPC																																																														
Detector : PEAK/QP			Load Line : 50mm																																																														
Polarization : Vertical			Comment :																																																														
Power Supply : DC 24V																																																																	
Limit: [EN 55022] Class A<3m>																																																																	
							Limit(QP) Horizontal(PEAK) Vertical(PEAK) Vertical(QP)		DC 24V																																																								
<table><tr><th>Frequency [MHz]</th><th>MeterReading (QP) [dBuV]</th><th>Ant. Type</th><th>Antenna Factor [dB/m]</th><th>Cable & Preamp [dB]</th><th>Level(QP) [dBuV/m]</th><th>Angle [°]</th><th>Height [cm]</th><th>Polar.</th><th>Limit [dBuV/m]</th><th>Margin [dB]</th></tr><tr><td>76.082</td><td>63.9</td><td>BL</td><td>6.5</td><td>-31.9</td><td>38.5</td><td>215</td><td>101</td><td>Vert.</td><td>50</td><td>11.5</td></tr><tr><td>90.032</td><td>59.5</td><td>BL</td><td>8.5</td><td>-31.8</td><td>36.2</td><td>185</td><td>116</td><td>Vert.</td><td>50</td><td>13.8</td></tr></table>											Frequency [MHz]	MeterReading (QP) [dBuV]	Ant. Type	Antenna Factor [dB/m]	Cable & Preamp [dB]	Level(QP) [dBuV/m]	Angle [°]	Height [cm]	Polar.	Limit [dBuV/m]	Margin [dB]	76.082	63.9	BL	6.5	-31.9	38.5	215	101	Vert.	50	11.5	90.032	59.5	BL	8.5	-31.8	36.2	185	116	Vert.	50	13.8																						
Frequency [MHz]	MeterReading (QP) [dBuV]	Ant. Type	Antenna Factor [dB/m]	Cable & Preamp [dB]	Level(QP) [dBuV/m]	Angle [°]	Height [cm]	Polar.	Limit [dBuV/m]	Margin [dB]																																																							
76.082	63.9	BL	6.5	-31.9	38.5	215	101	Vert.	50	11.5																																																							
90.032	59.5	BL	8.5	-31.8	36.2	185	116	Vert.	50	13.8																																																							

DATA SHEET

Model	Circuit used for measurement
Test	EMI Line conduction & Radiated emission

1. Line conduction



2. Radiated emission





Conditions

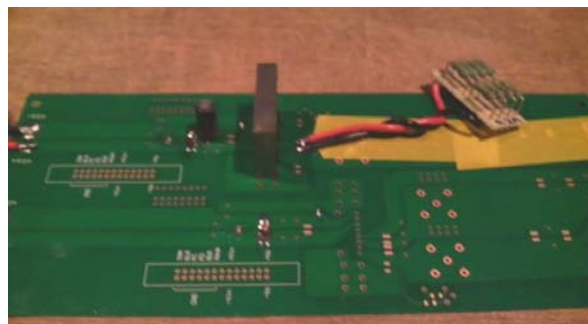
Test : EMI
Model Name : SUTS/SUTW1024□□

○Photographs of Test Set-Up

LINE CONDUCTION



RADIATED EMISSION



○Testing circuitry

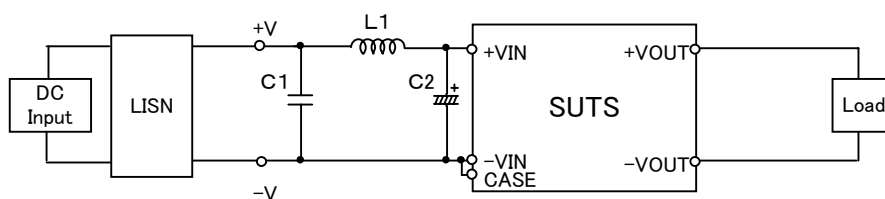


Fig.1 Testing circuitry 1

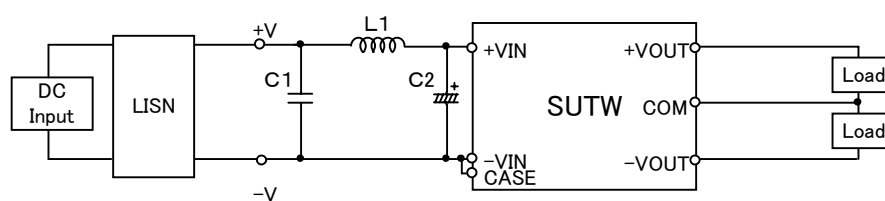


Fig.2 Testing circuitry 2

L1 :	2.2 μ H	CY3H-2R2	(KORIN ELECTRONICS)
C1 :	50V 3.3 μ F	C3225JB1H335M	(TDK)
C2 :	50V 100 μ F	UPM1H101M	(NICHICON)