

DATA SHEET							Date	12-Feb-09																																														
Model	SUTS64805						Temp.	25 degreeC																																														
Test	EMI Line conduction & Radiated emission						Humid.	45 %RH																																														
							Tested by	D.Joboji																																														
LINE CONDUCTION																																																						
Model Name : SUTS64805			Temp. : 25																																																			
Model No. :			Humi. : 45																																																			
Serial No. :			Date : 2009/2/12 9:28																																																			
Points : 4			Test Equip. : R3132,ESPC																																																			
Detector : PEAK/QP/Ave.			Comment :																																																			
Line Mode : VA/VB																																																						
Power Supply : DC 48V																																																						
Limit1: [EN 55022] Class A(QP)																																																						
Limit2: [EN 55022] Class A(Ave.)																																																						
							Limit1(QP) Limit2(Ave.) VA(PEAK) VB(PEAK) VA(QP) VA(Ave.) VB(QP) VB(Ave.) DC 48V																																															
<table><tr><th>Frequency [MHz]</th><th>Meter Reading (Ave.) [dBuV]</th><th>Meter Reading (QP) [dBuV]</th><th>Factor [dB]</th><th>Level(Ave.) [dBuV]</th><th>Level(QP) [dBuV]</th><th>Line</th><th>Limit(Ave.) [dBuV]</th><th>Limit(QP) [dBuV]</th><th>Margin(Ave.) [dB]</th><th>Margin(QP) [dB]</th></tr><tr><td>0.311</td><td>42.1</td><td>41.5</td><td>9.8</td><td>51.9</td><td>51.3</td><td>VA</td><td>66</td><td>79</td><td>14.1</td><td>27.7</td></tr><tr><td>0.9341</td><td>32.5</td><td>32</td><td>9.9</td><td>42.4</td><td>41.9</td><td>VA</td><td>60</td><td>73</td><td>17.6</td><td>31.1</td></tr><tr><td>5.3096</td><td>33.1</td><td>33.9</td><td>10</td><td>43.1</td><td>43.9</td><td>VB</td><td>60</td><td>73</td><td>16.9</td><td>29.1</td></tr></table>											Frequency [MHz]	Meter Reading (Ave.) [dBuV]	Meter Reading (QP) [dBuV]	Factor [dB]	Level(Ave.) [dBuV]	Level(QP) [dBuV]	Line	Limit(Ave.) [dBuV]	Limit(QP) [dBuV]	Margin(Ave.) [dB]	Margin(QP) [dB]	0.311	42.1	41.5	9.8	51.9	51.3	VA	66	79	14.1	27.7	0.9341	32.5	32	9.9	42.4	41.9	VA	60	73	17.6	31.1	5.3096	33.1	33.9	10	43.1	43.9	VB	60	73	16.9	29.1
Frequency [MHz]	Meter Reading (Ave.) [dBuV]	Meter Reading (QP) [dBuV]	Factor [dB]	Level(Ave.) [dBuV]	Level(QP) [dBuV]	Line	Limit(Ave.) [dBuV]	Limit(QP) [dBuV]	Margin(Ave.) [dB]	Margin(QP) [dB]																																												
0.311	42.1	41.5	9.8	51.9	51.3	VA	66	79	14.1	27.7																																												
0.9341	32.5	32	9.9	42.4	41.9	VA	60	73	17.6	31.1																																												
5.3096	33.1	33.9	10	43.1	43.9	VB	60	73	16.9	29.1																																												
RADIATED EMISSION																																																						
Model Name : SUTS64805			Temp. : 25																																																			
Model No. :			Humi. : 45																																																			
Serial No. :			Date : 2009/2/12 9:47																																																			
Points : 2			Test Equip. : R3132,ESPC																																																			
Detector : PEAK/QP			Comment :																																																			
Polarization : Hori. & Vert.																																																						
Power Supply : DC 48V																																																						
Limit: [EN 55022] Class A<3m>																																																						
							Limit(QP) Horizontal(PEAK) Vertical(PEAK) Horizontal(QP) Vertical(QP) DC 48V																																															
<table><tr><th>Frequency [MHz]</th><th>MeterReading (QP) [dBuV]</th><th>Ant. Type</th><th>Antenna Factor [dB/m]</th><th>Cable & Preamp [dB]</th><th>Level(QP) [dBuV/m]</th><th>Angle [°]</th><th>Height [cm]</th><th>Polar.</th><th>Limit [dBuV/m]</th><th>Margin [dB]</th></tr><tr><td>212.959</td><td>33.7</td><td>BL</td><td>8.8</td><td>-31.3</td><td>11.2</td><td>177</td><td>146</td><td>Hori.</td><td>50</td><td>38.8</td></tr><tr><td>297.386</td><td>29.9</td><td>BL</td><td>13</td><td>-30.9</td><td>12</td><td>272</td><td>135</td><td>Vert.</td><td>57</td><td>45</td></tr></table>											Frequency [MHz]	MeterReading (QP) [dBuV]	Ant. Type	Antenna Factor [dB/m]	Cable & Preamp [dB]	Level(QP) [dBuV/m]	Angle [°]	Height [cm]	Polar.	Limit [dBuV/m]	Margin [dB]	212.959	33.7	BL	8.8	-31.3	11.2	177	146	Hori.	50	38.8	297.386	29.9	BL	13	-30.9	12	272	135	Vert.	57	45											
Frequency [MHz]	MeterReading (QP) [dBuV]	Ant. Type	Antenna Factor [dB/m]	Cable & Preamp [dB]	Level(QP) [dBuV/m]	Angle [°]	Height [cm]	Polar.	Limit [dBuV/m]	Margin [dB]																																												
212.959	33.7	BL	8.8	-31.3	11.2	177	146	Hori.	50	38.8																																												
297.386	29.9	BL	13	-30.9	12	272	135	Vert.	57	45																																												

DATA SHEET

Model	Circuit used for measurement
Test	EMI Line conduction & Radiated emission

1. Line conduction



2. Radiated emission





Conditions

Test : EMI
Model Name : SUTS/SUTW 648□□

○Photographs of Test Set-Up

LINE CONDUCTION



RADIATED EMISSION



○Testing circuitry

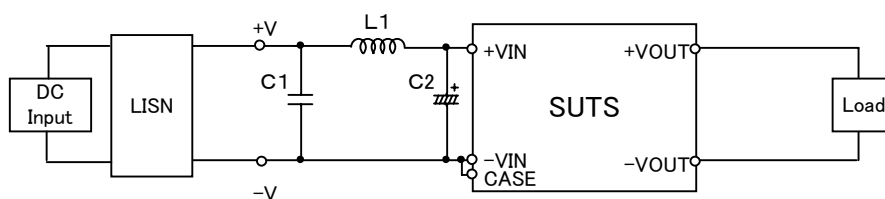


Fig.1 Testing circuitry 1

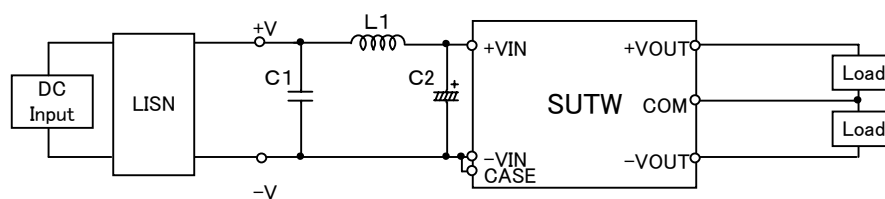


Fig.2 Testing circuitry 2

L1 :	6.8 μ H	CY3H-6R8	(KORIN ELECTRONICS)
C1 :	100V 1 μ F	C3225JB2A105M	(TDK)
C2 :	100V 47 μ F	UPW2A470M	(NICHICON)