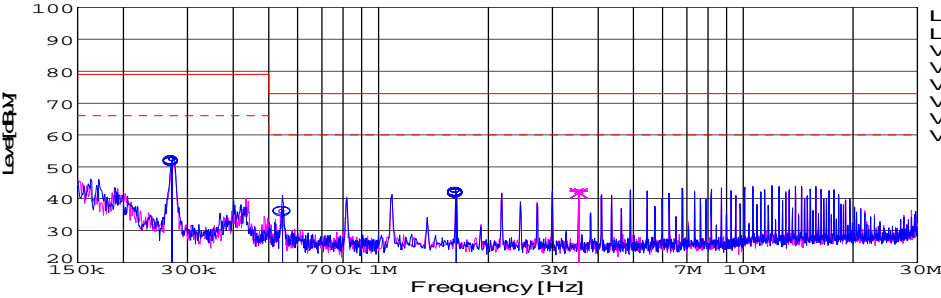
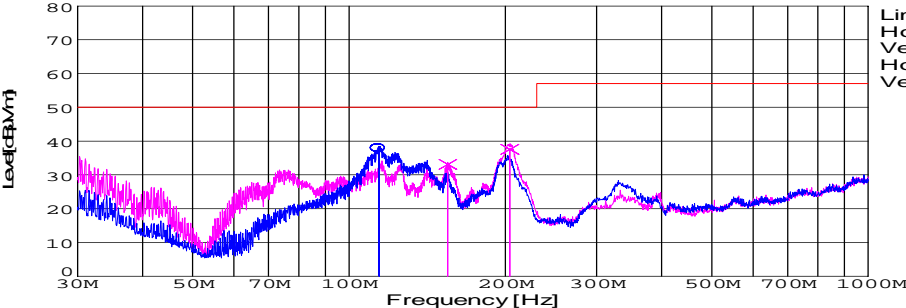


DATA SHEET							Date	27-Jan-09																																																									
Model	SUTW104815						Temp.	25 degreeC																																																									
Test	EMI Line conduction & Radiated emission						Humid.	45 %RH																																																									
							Tested by	D.Joboji																																																									
LINE CONDUCTION																																																																	
Model Name : SUTW104815			Temp. : 25																																																														
Model No. :			Humi. : 45																																																														
Serial No. :			Date : 2009/1/27 16:34																																																														
Points : 4			Test Equip. : R3132,ESPC																																																														
Detector : PEAK/QP/Ave.			Load Line : 50mm																																																														
Line Mode : VA/VB			Comment :																																																														
Power Supply : DC 48V																																																																	
Limit1: [EN 55022] Class A(QP)																																																																	
Limit2: [EN 55022] Class A(Ave.)																																																																	
							Limit1(QP) Limit2(Ave.) VA(PEAK) VB(PEAK) VA(QP) VA(Ave.) VB(QP) VB(Ave.) DC 48V																																																										
<table><tr><th>Frequency [MHz]</th><th>Meter Reading (Ave.) [dBuV]</th><th>Meter Reading (QP) [dBuV]</th><th>Factor [dB]</th><th>Level(Ave.) [dBuV]</th><th>Level(QP) [dBuV]</th><th>Line</th><th>Limit(Ave.) [dBuV]</th><th>Limit(QP) [dBuV]</th><th>Margin(Ave.) [dB]</th><th>Margin(QP) [dB]</th></tr><tr><td>0.2721</td><td>42.2</td><td>41.5</td><td>9.8</td><td>52</td><td>51.3</td><td>VA</td><td>66</td><td>79</td><td>14</td><td>27.7</td></tr><tr><td>0.5456</td><td>26</td><td>26.3</td><td>9.9</td><td>35.9</td><td>36.2</td><td>VA</td><td>60</td><td>73</td><td>24.1</td><td>36.8</td></tr><tr><td>1.6337</td><td>32.3</td><td>31.6</td><td>9.9</td><td>42.2</td><td>41.5</td><td>VA</td><td>60</td><td>73</td><td>17.8</td><td>31.5</td></tr><tr><td>3.54</td><td>32.4</td><td>31.7</td><td>10</td><td>42.4</td><td>41.7</td><td>VB</td><td>60</td><td>73</td><td>17.6</td><td>31.3</td></tr></table>											Frequency [MHz]	Meter Reading (Ave.) [dBuV]	Meter Reading (QP) [dBuV]	Factor [dB]	Level(Ave.) [dBuV]	Level(QP) [dBuV]	Line	Limit(Ave.) [dBuV]	Limit(QP) [dBuV]	Margin(Ave.) [dB]	Margin(QP) [dB]	0.2721	42.2	41.5	9.8	52	51.3	VA	66	79	14	27.7	0.5456	26	26.3	9.9	35.9	36.2	VA	60	73	24.1	36.8	1.6337	32.3	31.6	9.9	42.2	41.5	VA	60	73	17.8	31.5	3.54	32.4	31.7	10	42.4	41.7	VB	60	73	17.6	31.3
Frequency [MHz]	Meter Reading (Ave.) [dBuV]	Meter Reading (QP) [dBuV]	Factor [dB]	Level(Ave.) [dBuV]	Level(QP) [dBuV]	Line	Limit(Ave.) [dBuV]	Limit(QP) [dBuV]	Margin(Ave.) [dB]	Margin(QP) [dB]																																																							
0.2721	42.2	41.5	9.8	52	51.3	VA	66	79	14	27.7																																																							
0.5456	26	26.3	9.9	35.9	36.2	VA	60	73	24.1	36.8																																																							
1.6337	32.3	31.6	9.9	42.2	41.5	VA	60	73	17.8	31.5																																																							
3.54	32.4	31.7	10	42.4	41.7	VB	60	73	17.6	31.3																																																							
RADIATED EMISSION																																																																	
Model Name : SUTW104815			Temp. : 25																																																														
Model No. :			Humi. : 45																																																														
Serial No. :			Date : 2009/1/27 15:55																																																														
Points : 3			Test Equip. : R3132,ESPC																																																														
Detector : PEAK/QP			Load Line : 50mm																																																														
Polarization : Hori. & Vert.			Comment :																																																														
Power Supply : DC 48V																																																																	
Limit: [EN 55022] Class A<3m>																																																																	
							Limit(QP) Horizontal(PEAK) Vertical(PEAK) Horizontal(QP) Vertical(QP) DC 48V																																																										
<table><tr><th>Frequency [MHz]</th><th>MeterReading (QP) [dBuV]</th><th>Ant. Type</th><th>Antenna Factor [dB/m]</th><th>Cable &amp; Preamp [dB]</th><th>Level(QP) [dBuV/m]</th><th>Angle [°]</th><th>Height [cm]</th><th>Polar.</th><th>Limit [dBuV/m]</th><th>Margin [dB]</th></tr><tr><td>114.268</td><td>58.9</td><td>BL</td><td>10.8</td><td>-31.7</td><td>38</td><td>185</td><td>141</td><td>Hori.</td><td>50</td><td>12</td></tr><tr><td>155.075</td><td>54.3</td><td>BL</td><td>10.3</td><td>-31.5</td><td>33.1</td><td>322</td><td>160</td><td>Vert.</td><td>50</td><td>16.9</td></tr><tr><td>204.11</td><td>60.3</td><td>BL</td><td>8.6</td><td>-31.3</td><td>37.6</td><td>309</td><td>122</td><td>Vert.</td><td>50</td><td>12.4</td></tr></table>											Frequency [MHz]	MeterReading (QP) [dBuV]	Ant. Type	Antenna Factor [dB/m]	Cable & Preamp [dB]	Level(QP) [dBuV/m]	Angle [°]	Height [cm]	Polar.	Limit [dBuV/m]	Margin [dB]	114.268	58.9	BL	10.8	-31.7	38	185	141	Hori.	50	12	155.075	54.3	BL	10.3	-31.5	33.1	322	160	Vert.	50	16.9	204.11	60.3	BL	8.6	-31.3	37.6	309	122	Vert.	50	12.4											
Frequency [MHz]	MeterReading (QP) [dBuV]	Ant. Type	Antenna Factor [dB/m]	Cable & Preamp [dB]	Level(QP) [dBuV/m]	Angle [°]	Height [cm]	Polar.	Limit [dBuV/m]	Margin [dB]																																																							
114.268	58.9	BL	10.8	-31.7	38	185	141	Hori.	50	12																																																							
155.075	54.3	BL	10.3	-31.5	33.1	322	160	Vert.	50	16.9																																																							
204.11	60.3	BL	8.6	-31.3	37.6	309	122	Vert.	50	12.4																																																							

## DATA SHEET

Model	Circuit used for measurement
Test	EMI Line conduction & Radiated emission

### 1. Line conduction



### 2. Radiated emission



# COSEL

## Conditions

Test : EMI  
Model Name : SUTS/SUTW1048□□

○Photographs of Test Set-Up

### LINE CONDUCTION



### RADIATED EMISSION



○Testing circuitry

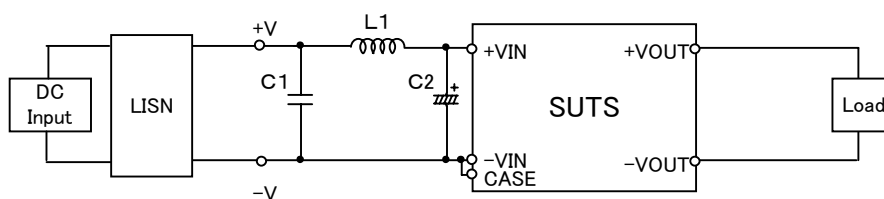


Fig.1 Testing circuitry 1

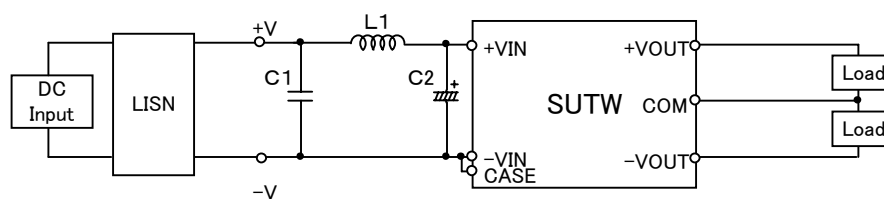


Fig.2 Testing circuitry 2

L1 : 10 $\mu$ H	CY3H-100	(KORIN ELECTRONICS)
C1: 100V 2.2 $\mu$ F	C4532JB2A225M	(TDK)
C2: 100V 47 $\mu$ F	UPW2A470M	(NICHICON)