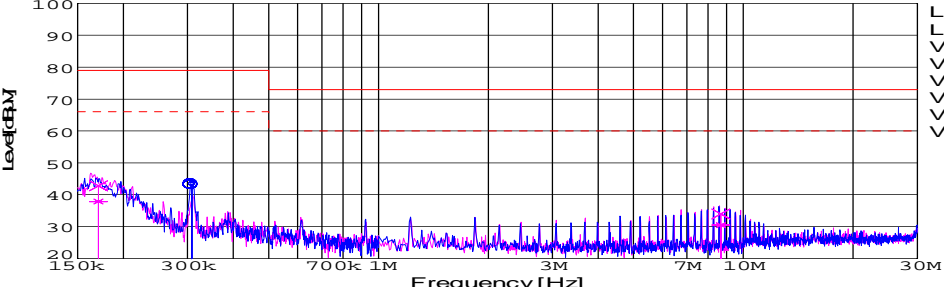
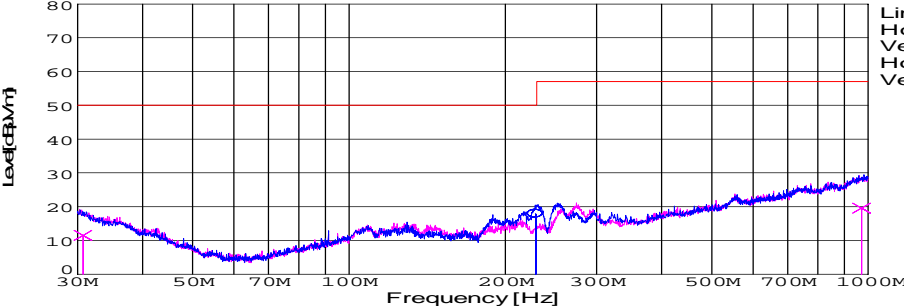


DATA SHEET							Date	05-Feb-09																																														
Model	SUTW32415						Temp.	25 degreeC																																														
Test	EMI Line conduction & Radiated emission						Humid.	45 %RH																																														
							Tested by	D.Joboji																																														
LINE CONDUCTION																																																						
Model Name : SUTW32415			Temp. : 25																																																			
Model No. :			Humi. : 45																																																			
Serial No. :			Date : 2009/2/5 20:17																																																			
Points : 3			Test Equip. : R3132,ESPC																																																			
Detector : PEAK/QP/Ave.			Load Line : 10mm																																																			
Line Mode : VA/VB			Comment :																																																			
Power Supply : DC 24V																																																						
Limit1: [EN 55022] Class A(QP)																																																						
Limit2: [EN 55022] Class A(Ave.)																																																						
							Limit1(QP) Limit2(Ave.) VA(PEAK) VB(PEAK) VA(QP) VA(Ave.) VB(QP) VB(Ave.) DC 24V																																															
<table><tr><th>Frequency [MHz]</th><th>Meter Reading (Ave.) [dBuV]</th><th>Meter Reading (QP) [dBuV]</th><th>Factor [dB]</th><th>Level(Ave.) [dBuV]</th><th>Level(QP) [dBuV]</th><th>Line</th><th>Limit(Ave.) [dBuV]</th><th>Limit(QP) [dBuV]</th><th>Margin(Ave.) [dB]</th><th>Margin(QP) [dB]</th></tr><tr><td>0.3076</td><td>33.4</td><td>33.4</td><td>9.8</td><td>43.2</td><td>43.2</td><td>VA</td><td>66</td><td>79</td><td>22.8</td><td>35.8</td></tr><tr><td>0.171</td><td>28.1</td><td>33</td><td>9.8</td><td>37.9</td><td>42.8</td><td>VB</td><td>66</td><td>79</td><td>28.1</td><td>36.2</td></tr><tr><td>8.6758</td><td>20.4</td><td>23.9</td><td>10.1</td><td>30.5</td><td>34</td><td>VB</td><td>60</td><td>73</td><td>29.5</td><td>39</td></tr></table>											Frequency [MHz]	Meter Reading (Ave.) [dBuV]	Meter Reading (QP) [dBuV]	Factor [dB]	Level(Ave.) [dBuV]	Level(QP) [dBuV]	Line	Limit(Ave.) [dBuV]	Limit(QP) [dBuV]	Margin(Ave.) [dB]	Margin(QP) [dB]	0.3076	33.4	33.4	9.8	43.2	43.2	VA	66	79	22.8	35.8	0.171	28.1	33	9.8	37.9	42.8	VB	66	79	28.1	36.2	8.6758	20.4	23.9	10.1	30.5	34	VB	60	73	29.5	39
Frequency [MHz]	Meter Reading (Ave.) [dBuV]	Meter Reading (QP) [dBuV]	Factor [dB]	Level(Ave.) [dBuV]	Level(QP) [dBuV]	Line	Limit(Ave.) [dBuV]	Limit(QP) [dBuV]	Margin(Ave.) [dB]	Margin(QP) [dB]																																												
0.3076	33.4	33.4	9.8	43.2	43.2	VA	66	79	22.8	35.8																																												
0.171	28.1	33	9.8	37.9	42.8	VB	66	79	28.1	36.2																																												
8.6758	20.4	23.9	10.1	30.5	34	VB	60	73	29.5	39																																												
RADIATED EMISSION																																																						
Model Name : SUTW32415			Temp. : 25																																																			
Model No. :			Humi. : 45																																																			
Serial No. :			Date : 2009/2/5 20:47																																																			
Points : 3			Test Equip. : R3132,ESPC																																																			
Detector : PEAK/QP			Load Line : 10mm																																																			
Polarization : Hori. & Vert.			Comment :																																																			
Power Supply : DC 24V																																																						
Limit: [EN 55022] Class A<3m>																																																						
							Limit(QP) Horizontal(PEAK) Vertical(PEAK) Horizontal(QP) Vertical(QP) DC 24V																																															
<table><tr><th>Frequency [MHz]</th><th>Meter Reading (QP) [dBuV]</th><th>Ant. Type</th><th>Antenna Factor [dB/m]</th><th>Cable & Preamp [dB]</th><th>Level(QP) [dBuV/m]</th><th>Angle [°]</th><th>Height [cm]</th><th>Polar.</th><th>Limit [dBuV/m]</th><th>Margin [dB]</th></tr><tr><td>228.821</td><td>39.4</td><td>BL</td><td>9.7</td><td>-31.2</td><td>17.9</td><td>359</td><td>155</td><td>Hori.</td><td>50</td><td>32.1</td></tr><tr><td>30.732</td><td>26</td><td>BL</td><td>17.8</td><td>-32.3</td><td>11.5</td><td>150</td><td>157</td><td>Vert.</td><td>50</td><td>38.5</td></tr><tr><td>971.084</td><td>23.6</td><td>BL</td><td>25.3</td><td>-29.3</td><td>19.6</td><td>230</td><td>115</td><td>Vert.</td><td>57</td><td>37.4</td></tr></table>											Frequency [MHz]	Meter Reading (QP) [dBuV]	Ant. Type	Antenna Factor [dB/m]	Cable & Preamp [dB]	Level(QP) [dBuV/m]	Angle [°]	Height [cm]	Polar.	Limit [dBuV/m]	Margin [dB]	228.821	39.4	BL	9.7	-31.2	17.9	359	155	Hori.	50	32.1	30.732	26	BL	17.8	-32.3	11.5	150	157	Vert.	50	38.5	971.084	23.6	BL	25.3	-29.3	19.6	230	115	Vert.	57	37.4
Frequency [MHz]	Meter Reading (QP) [dBuV]	Ant. Type	Antenna Factor [dB/m]	Cable & Preamp [dB]	Level(QP) [dBuV/m]	Angle [°]	Height [cm]	Polar.	Limit [dBuV/m]	Margin [dB]																																												
228.821	39.4	BL	9.7	-31.2	17.9	359	155	Hori.	50	32.1																																												
30.732	26	BL	17.8	-32.3	11.5	150	157	Vert.	50	38.5																																												
971.084	23.6	BL	25.3	-29.3	19.6	230	115	Vert.	57	37.4																																												

DATA SHEET

Model	Circuit used for measurement
Test	EMI Line conduction & Radiated emission

1. Line conduction



2. Radiated emission





Conditions

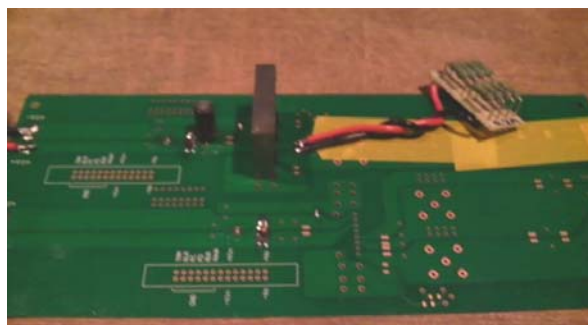
Test : EMI
Model Name : SUTS/SUTW 324□□

○Photographs of Test Set-Up

LINE CONDUCTION



RADIATED EMISSION



○Testing circuitry

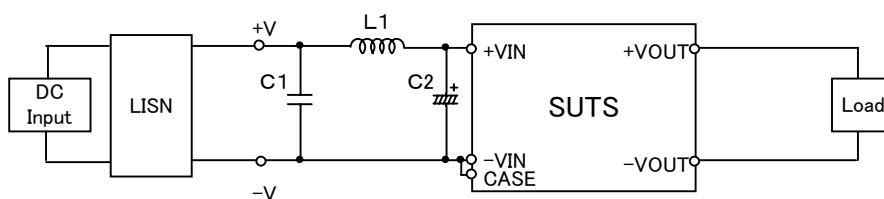


Fig.1 Testing circuitry 1

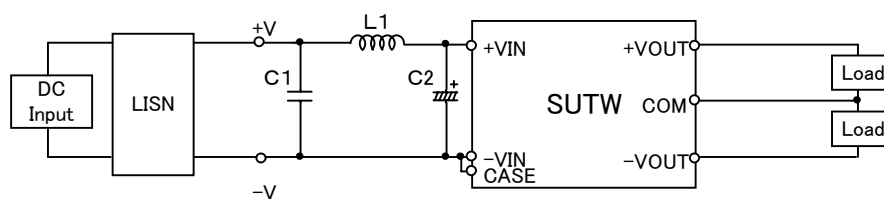


Fig.2 Testing circuitry 2

L1 :	10 μ H	CY3H-100	(KORIN ELECTRONICS)
C1 :	50V 0.47 μ F	C2012JB1H474K	(TDK)
C2 :	50V 47 μ F	UPW1H470M	(NICHICON)