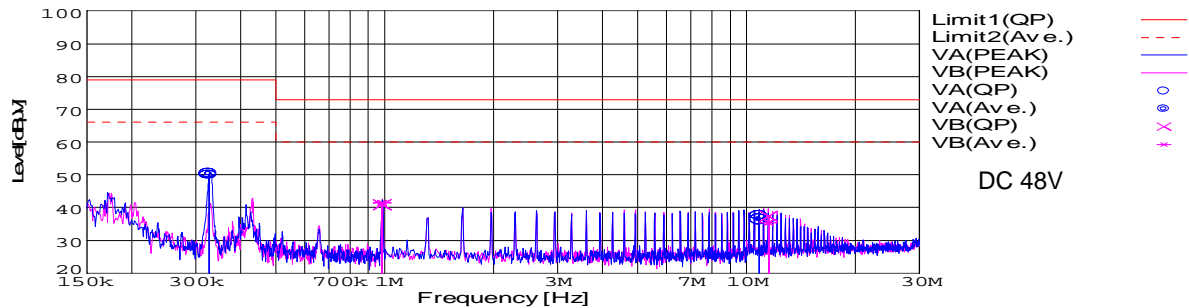


| DATA SHEET | | Date | 20-Feb-05 |
|------------|--|-----------|------------|
| Model | SUTW64815 | Temp. | 25 degreeC |
| Test | EMI Line conduction & Radiated emission | Humid. | 45 %RH |
| | | Tested by | D.Joboji |

LINE CONDUCTION

Model Name : SUTW64815
 Model No. :
 Serial No. :
 Points : 4
 Detector : PEAK/QP/Ave.
 Line Mode : VA/VB
 Power Supply : DC 48V
 Limit1: [EN 55022] Class A(QP)
 Limit2: [EN 55022] Class A(Ave.)

Temp. : 25
 Humi. : 45
 Date : 2005/2/20 12:00
 Test Equip. : R3132,ESPC
 Comment :

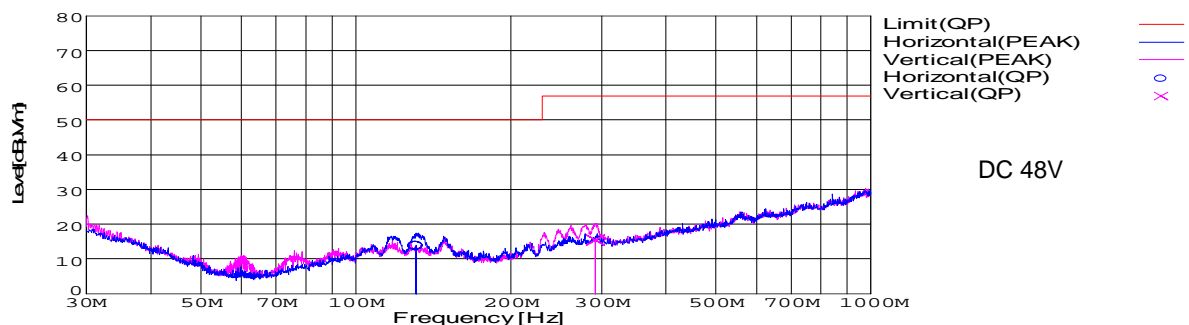


| Frequency [MHz] | Meter Reading (Ave.) [dBuV] | Meter Reading (QP) [dBuV] | Factor [dB] | Level(Ave.) [dBuV] | Level(QP) [dBuV] | Line | Limit(Ave.) [dBuV] | Limit(QP) [dBuV] | Margin(Ave.) [dB] | Margin(QP) [dB] |
|-----------------|-----------------------------|---------------------------|-------------|--------------------|------------------|------|--------------------|------------------|-------------------|-----------------|
| 0.3276 | 40.6 | 40 | 9.8 | 50.4 | 49.8 | VA | 66 | 79 | 15.6 | 29.2 |
| 10.8353 | 26.2 | 27.4 | 10.1 | 36.3 | 37.5 | VA | 60 | 73 | 23.7 | 35.5 |
| 0.9843 | 31.5 | 30.9 | 9.9 | 41.4 | 40.8 | VB | 60 | 73 | 18.6 | 32.2 |
| 11.4954 | 25.2 | 27.2 | 10.1 | 35.3 | 37.3 | VB | 60 | 73 | 24.7 | 35.7 |

RADIATED EMISSION

Model Name : SUTW64815
 Model No. :
 Serial No. :
 Points : 2
 Detector : PEAK/QP
 Polarization : Hori. & Vert.
 Power Supply : DC 48V
 Limit: [EN 55022] Class A<3m>

Temp. : 25
 Humi. : 45
 Date : 2009/2/20 12:57
 Test Equip. : R3132,ESPC
 Comment :

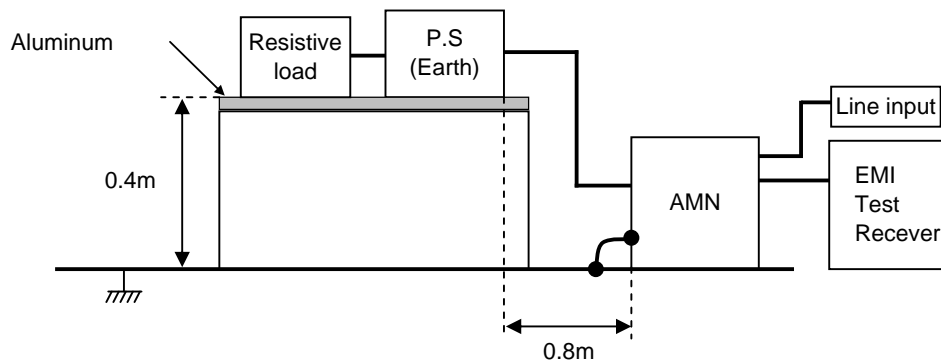


| Frequency [MHz] | Meter Reading (QP) [dBuV] | Ant. Type | Antenna Factor [dB/m] | Cable & Preamp [dB] | Level(QP) [dBuV/m] | Angle [°] | Height [cm] | Polar. | Limit [dBuV/m] | Margin [dB] |
|-----------------|---------------------------|-----------|-----------------------|---------------------|--------------------|-----------|-------------|--------|----------------|-------------|
| 130.942 | 34.2 | BL | 11.2 | -31.6 | 13.8 | 329 | 156 | Hori. | 50 | 36.2 |
| 291.913 | 33.5 | BL | 12.9 | -31 | 15.4 | 310 | 106 | Vert. | 57 | 41.6 |

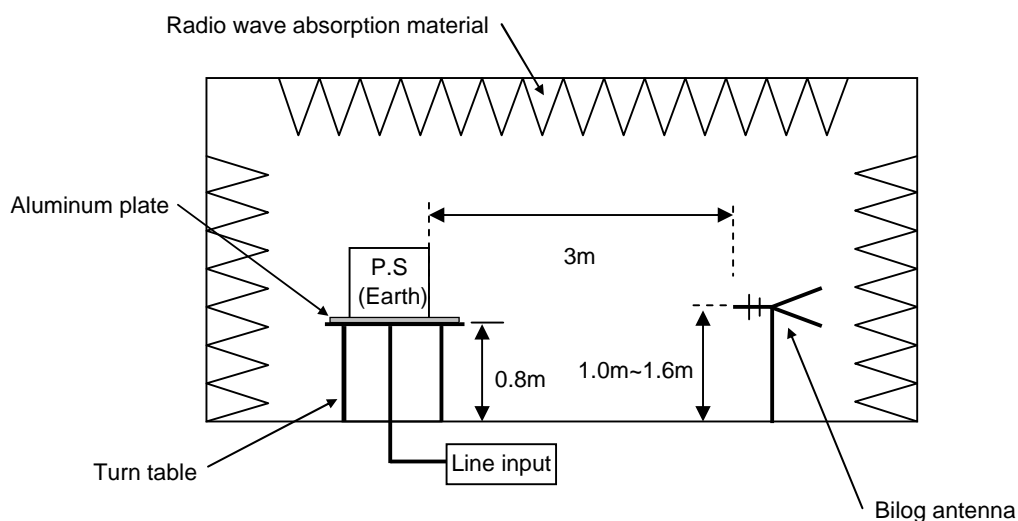
DATA SHEET

| | |
|-------|--|
| Model | Circuit used for measurement |
| Test | EMI Line conduction & Radiated emission |

1. Line conduction



2. Radiated emission





Conditions

Test : EMI
Model Name : SUTS/SUTW 648□□

○Photographs of Test Set-Up

LINE CONDUCTION



RADIATED EMISSION



○Testing circuitry

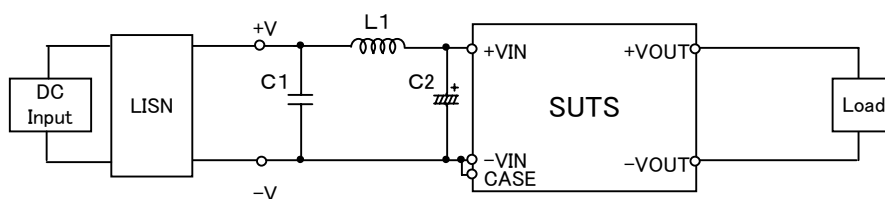


Fig.1 Testing circuitry 1

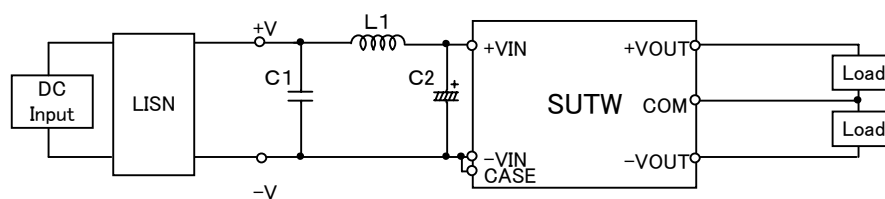


Fig.2 Testing circuitry 2

| | | | |
|------|-----------------|---------------|---------------------|
| L1 : | 6.8 μ H | CY3H-6R8 | (KORIN ELECTRONICS) |
| C1 : | 100V 1 μ F | C3225JB2A105M | (TDK) |
| C2 : | 100V 47 μ F | UPW2A470M | (NICHICON) |