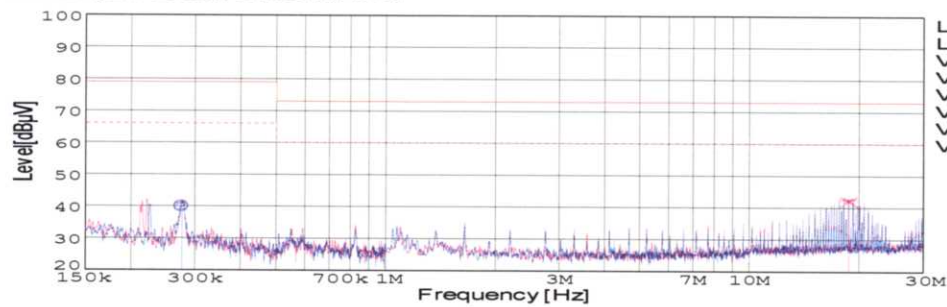


DATA SHEET

Model		SUW100515	Date	01-Mar-05
Test		EMI	Temp.	25degreeC
		Line conduction & Radiated emission	Humid.	45 %RH
			Tested by	C.Makino

LINE CONDUCTION

Model Name : SUW100515
 Model No. :
 Serial No. :
 Points : 2
 Detector : PEAK/QP/Ave.
 Line Mode : VA/VB
 Power Supply : DC 5V
 Limit1: [EN 55022] Class A(QP)
 Limit2: [EN 55022] Class A(Ave.)
 Temp. : 25degreeC
 Humi. : 45%
 Date : 2005/3/1 17:10
 Test Equip. : R3132,ESPC
 Load Line : 50mm
 Comment : C.Makino

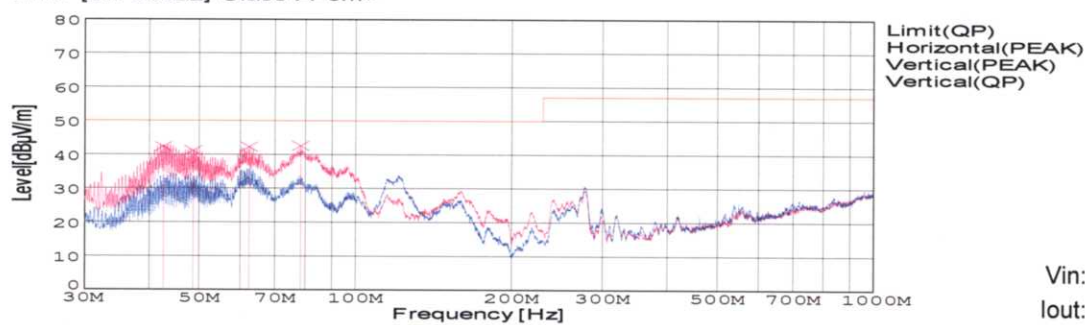


Vin: DC5V
Iout: 0.35A

Frequency [MHz]	Meter Reading (Ave.) [dBuV]	Meter Reading (QP) [dBuV]	Factor [dB]	Level(Ave.) [dBuV]	Level(QP) [dBuV]	Line	Limit(Ave.) [dBuV]	Limit(QP) [dBuV]	Margin(Ave.) [dB]	Margin(QP) [dB]
0.2755	30.5	30	9.8	40.3	39.8	VA	66	79	25.7	39.2
18.6819	32.3	31.9	10.2	42.5	42.1	VB	60	73	17.5	30.9

RADIATED EMISSION

Model Name : SUW100515
 Model No. :
 Serial No. :
 Points : 4
 Detector : PEAK/QP
 Polarization : Vertical
 Power Supply : DC 5V
 Limit: [EN 55022] Class A<3m>
 Temp. : 25degreeC
 Humi. : 45%
 Date : 2005/2/22 19:31
 Test Equip. : R3132,ESPC
 Load Line : 50mm
 Comment : C.Makino



Vin: DC5V
Iout: 0.35A

Frequency [MHz]	MeterReading (QP) [dBuV]	Ant. Type	Antenna Factor[dB/m]	Cable & Preamp[dB]	Level(QP) [dBuV/m]	Angle [°]	Height[cm]	Polar.	Limit [dBuV/m]	Margin [dB]
42.597	63.1	BL	11.6	-32.2	42.5	141	101	Vert.	50	7.5
48.641	64.9	BL	8.4	-32.1	41.2	125	100	Vert.	50	8.8
62.379	69.7	BL	4.7	-32	42.4	116	120	Vert.	50	7.6
78.321	67.7	BL	6.8	-31.9	42.6	120	115	Vert.	50	7.4

COSEL

Conditions

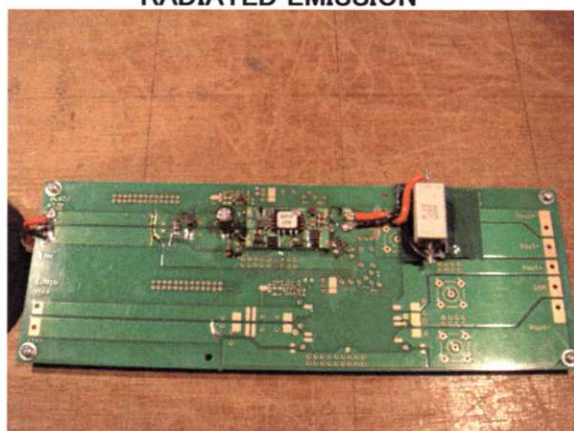
Test : EMI
Model Name : SUS/SUW1005

○Photographs of Test Set-Up

LINE CONDUCTION



RADIATED EMISSION



○Testing circuitry

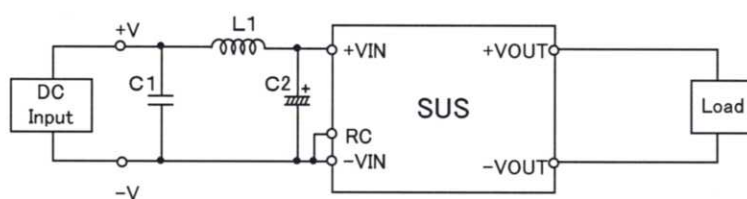


Fig.1 Testing circuitry 1

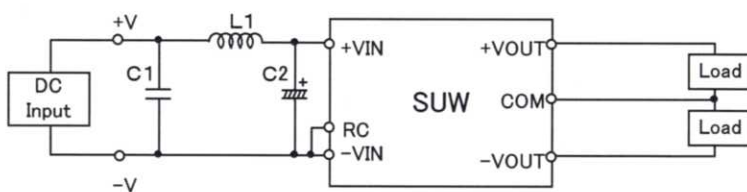


Fig.2 Testing circuitry 2

L1 : 0.5 μ H	CI4-0R5	(KORIN ELECTRONICS)
C1: 25V 22 μ F	GRM32ER71C226K	(MURATA)
C2: 25V 470 μ F	UPM1E471M	(NICHICON)