

DATA SHEET

DATA SHEET		Date	12-Mar-05
Model	SUW102415	Temp.	25degreeC
Test	EMI Line conduction & Radiated emission	Humid.	45 %RH
		Tested by	C.Makino

LINE CONDUCTION

Model Name : SUW102415

Model No. :

Serial No. :

Points :

Detector : PEAK/QP/Ave.

Line Mode : VA/VB

Power Supply : DC 24V

Limit1: [EN 55022] Class A(QP)

Limit2: [EN 55022] Class A(Ave.)

Temp. :

Humi. :

Date :

Test Equip. :

Load Line :

Comment :

25degreeC

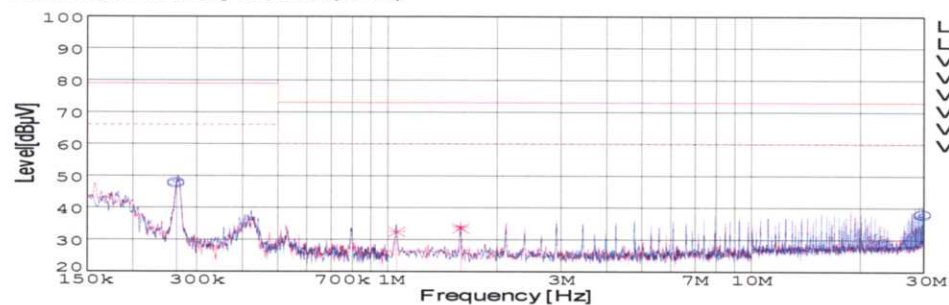
45%

2005/3/12 14:47

R3132,ESPC

50mm

C.Makino



Limit1(QP)
Limit2(Ave.)
VA(PEAK)
VB(PEAK)
VA(QP)
VA(Ave.)
VB(QP)
VB(Ave.)

Vin: DC24V

Iout: 0.35A

Frequency [MHz]	Meter Reading (Ave.) [dBuV]	Meter Reading (QP) [dBuV]	Factor [dB]	Level(Ave.) [dBuV]	Level(QP) [dBuV]	Line	Limit(Ave.) [dBuV]	Limit(QP) [dBuV]	Margin(Ave.) [dB]	Margin(QP) [dB]
0.2633	38.3	37.8	9.8	48.1	47.6	VA	66	79	17.9	31.4
29.8601	27.4	27.6	10.5	37.9	38.1	VA	60	73	22.1	34.9
1.0578	22.6	22.6	9.9	32.5	32.5	VB	60	73	27.5	40.5
1.5855	24	23.6	9.9	33.9	33.5	VB	60	73	26.1	39.5

RADIATED EMISSION

Model Name : SUW102415

Model No. :

Serial No. :

Points :

Detector : PEAK/QP

Polarization : Vertical

Power Supply : DC 24V

Limit: [EN 55022] Class A<3m>

Temp. :

Humi. :

Date :

Test Equip. :

Load Line :

Comment :

25degreeC

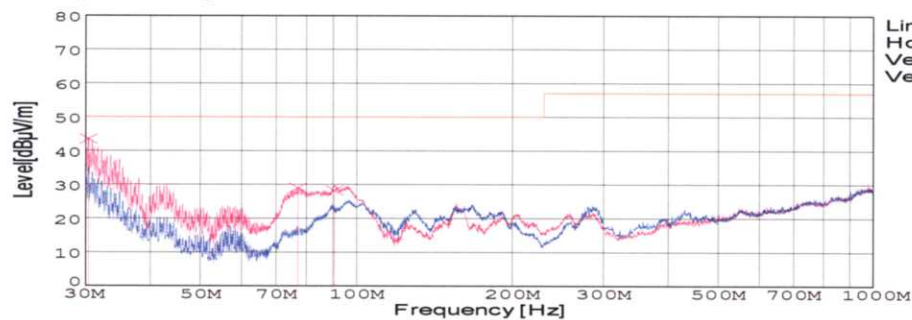
45%

2005/3/12 14:35

R3132,ESPC

50mm

C.Makino



Limit(QP)
Horizontal(PEAK)
Vertical(PEAK)
Vertical(QP)

Vin: DC24V

Iout: 0.35A

Frequency [MHz]	Meter Reading (QP) [dBuV]	Ant. Type	Antenna Factor [dB/m]	Cable & Preamp [dB]	Level(QP) [dBuV/m]	Angle [°]	Height [cm]	Polar.	Limit [dBuV/m]	Margin [dB]
30.388	57.9	BL	18	-32.3	43.6	247	101	Vert.	50	6.4
77.135	54.4	BL	6.7	-31.9	29.2	204	114	Vert.	50	20.8
90.603	51.6	BL	8.6	-31.8	28.4	185	118	Vert.	50	21.6

COSEL

Conditions

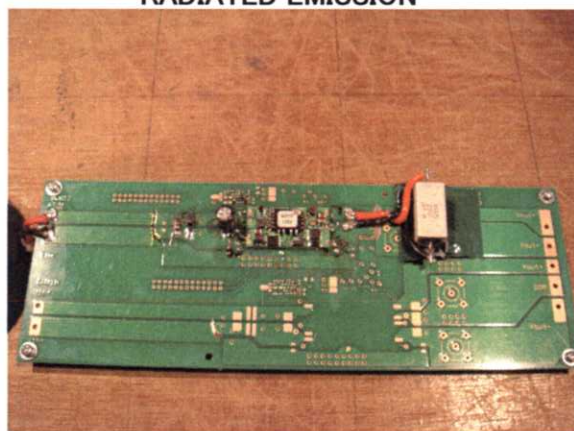
Test : EMI
Model Name : SUS/SUW1024

○Photographs of Test Set-Up

LINE CONDUCTION



RADIATED EMISSION



○Testing circuitry

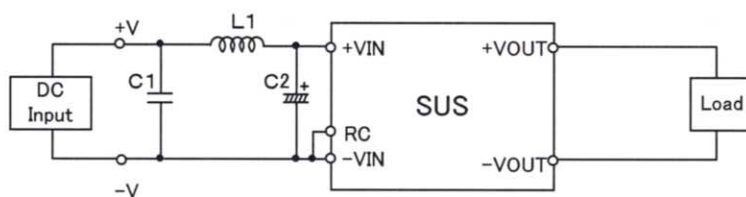


Fig.1 Testing circuitry 1

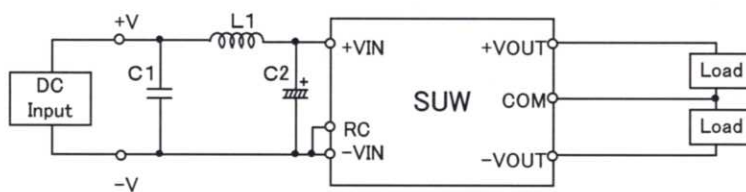


Fig.2 Testing circuitry 2

L1 : 2.2 μ H	CY3H-2R2	(KORIN ELECTRONICS)
C1: 50V 3.3 μ F	C3225JB1H335M	(TDK)
C2: 50V 100 μ F	UPM1H101M	(NICHICON)