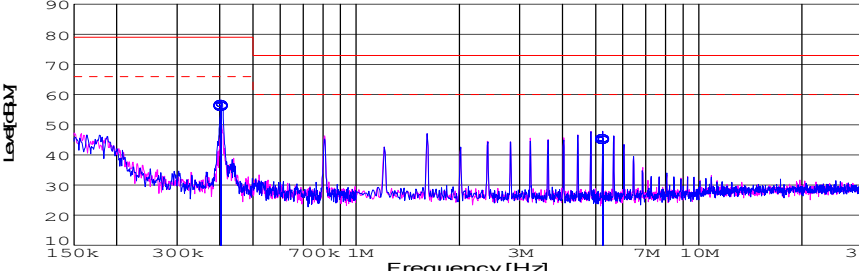
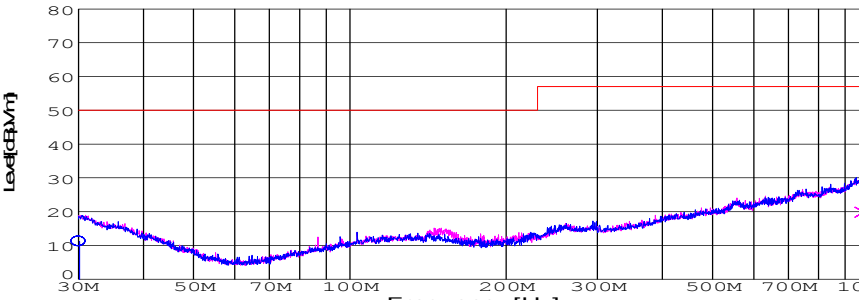


DATA SHEET							Date	17-May-05																																														
Model	SUW1R54815						Temp.	25degreeC																																														
Test	EMI Line conduction & Radiated emission						Humid.	45 %RH																																														
							Tested by	T.Ohara																																														
LINE CONDUCTION																																																						
Model Name : SUW1R54815			Temp. : 25degreeC																																																			
Model No. : -			Humi. : 45%																																																			
Serial No. : -			Date : 2004/10/14 19:29																																																			
Points : 2			Test Equip. : R3132,ESPC																																																			
Detector : PEAK/QP/Ave.			Load Line : 10mm																																																			
Line Mode : VA			Comment : -																																																			
Power Supply : DC 48V																																																						
Limit1: [EN 55022] Class A(QP)																																																						
Limit2: [EN 55022] Class A(Ave.)																																																						
							Limit1(QP) : 79		Limit2(Ave.) : 66																																													
							VA(PEAK) : 56.5		VB(PEAK) : 44.9																																													
							VA(QP) : 55.9		VA(Ave.) : 45.2																																													
							Vin : DC48V																																															
							Iout : 0.05A																																															
<table><tr><th>Frequency [MHz]</th><th>Meter Reading (Ave.)[dBuV]</th><th>Meter Reading (QP)[dBuV]</th><th>Factor [dB]</th><th>Level(Ave.) [dBuV]</th><th>Level(QP) [dBuV]</th><th>Line</th><th>Limit(Ave.) [dBuV]</th><th>Limit(QP) [dBuV]</th><th>Margin(Ave.) [dB]</th><th>Margin(QP) [dB]</th></tr><tr><td>0.4027</td><td>46.6</td><td>46</td><td>9.9</td><td>56.5</td><td>55.9</td><td>VA</td><td>66</td><td>79</td><td>9.5</td><td>23.1</td></tr><tr><td>5.2462</td><td>34.9</td><td>35.2</td><td>10</td><td>44.9</td><td>45.2</td><td>VA</td><td>60</td><td>73</td><td>15.1</td><td>27.8</td></tr><tr><td colspan="11"></td></tr></table>											Frequency [MHz]	Meter Reading (Ave.)[dBuV]	Meter Reading (QP)[dBuV]	Factor [dB]	Level(Ave.) [dBuV]	Level(QP) [dBuV]	Line	Limit(Ave.) [dBuV]	Limit(QP) [dBuV]	Margin(Ave.) [dB]	Margin(QP) [dB]	0.4027	46.6	46	9.9	56.5	55.9	VA	66	79	9.5	23.1	5.2462	34.9	35.2	10	44.9	45.2	VA	60	73	15.1	27.8											
Frequency [MHz]	Meter Reading (Ave.)[dBuV]	Meter Reading (QP)[dBuV]	Factor [dB]	Level(Ave.) [dBuV]	Level(QP) [dBuV]	Line	Limit(Ave.) [dBuV]	Limit(QP) [dBuV]	Margin(Ave.) [dB]	Margin(QP) [dB]																																												
0.4027	46.6	46	9.9	56.5	55.9	VA	66	79	9.5	23.1																																												
5.2462	34.9	35.2	10	44.9	45.2	VA	60	73	15.1	27.8																																												
RADIATED EMISSION																																																						
Model Name : SUW1R54815			Temp. : 25degreeC																																																			
Model No. : -			Humi. : 45%																																																			
Serial No. : -			Date : 2005/5/12 9:45																																																			
Points : 2			Test Equip. : R3132,ESPC																																																			
Detector : PEAK/QP			Load Line : 10mm																																																			
Polarization : Hori. & Vert.			Comment : -																																																			
Power Supply : DC 48V																																																						
Limit: [EN 55022] Class A<3m>																																																						
							Limit(QP) : 57		Horizontal(PEAK) : 50																																													
							Vertical(PEAK) : 38.8		Horizontal(QP) : 37.1																																													
							Vertical(QP) : 37.1																																															
							Vin : DC48V																																															
							Iout : 0.05A																																															
<table><tr><th>Frequency [MHz]</th><th>MeterReading (QP)[dBuV]</th><th>Ant. Type</th><th>Antenna Factor[dB/m]</th><th>Cable & Preamp[dB]</th><th>Level(QP) [dBuV/m]</th><th>Angle [°]</th><th>Height[cm]</th><th>Polar.</th><th>Limit [dBuV/m]</th><th>Margin [dB]</th></tr><tr><td>30.167</td><td>25.4</td><td>BL</td><td>18.1</td><td>-32.3</td><td>11.2</td><td>113</td><td>153</td><td>Hori.</td><td>50</td><td>38.8</td></tr><tr><td>978.52</td><td>24</td><td>BL</td><td>25.2</td><td>-29.3</td><td>19.9</td><td>100</td><td>155</td><td>Vert.</td><td>57</td><td>37.1</td></tr></table>											Frequency [MHz]	MeterReading (QP)[dBuV]	Ant. Type	Antenna Factor[dB/m]	Cable & Preamp[dB]	Level(QP) [dBuV/m]	Angle [°]	Height[cm]	Polar.	Limit [dBuV/m]	Margin [dB]	30.167	25.4	BL	18.1	-32.3	11.2	113	153	Hori.	50	38.8	978.52	24	BL	25.2	-29.3	19.9	100	155	Vert.	57	37.1											
Frequency [MHz]	MeterReading (QP)[dBuV]	Ant. Type	Antenna Factor[dB/m]	Cable & Preamp[dB]	Level(QP) [dBuV/m]	Angle [°]	Height[cm]	Polar.	Limit [dBuV/m]	Margin [dB]																																												
30.167	25.4	BL	18.1	-32.3	11.2	113	153	Hori.	50	38.8																																												
978.52	24	BL	25.2	-29.3	19.9	100	155	Vert.	57	37.1																																												

COSEL

Conditions

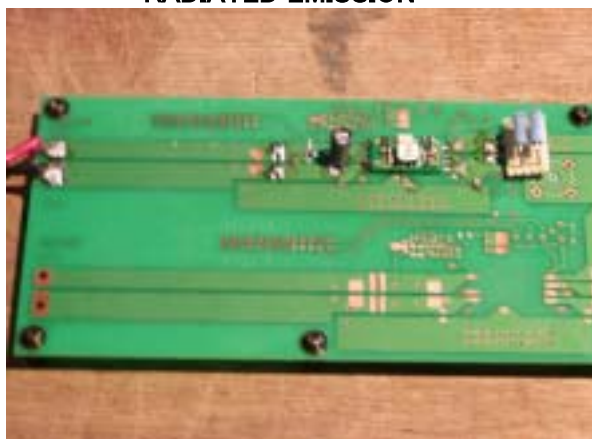
Test : EMI
Model Name : SUS/SUW 1R548

○Photographs of Test Set-Up

LINE CONDUCTION



RADIATED EMISSION



○Testing circuitry

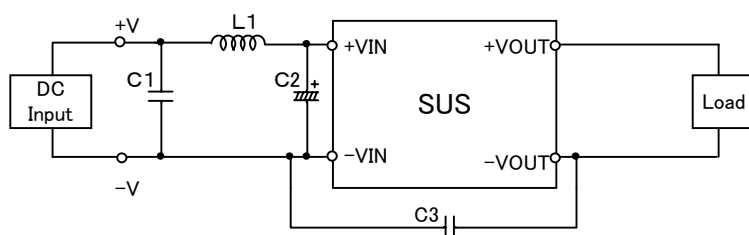


Fig.1 Testing circuitry 1

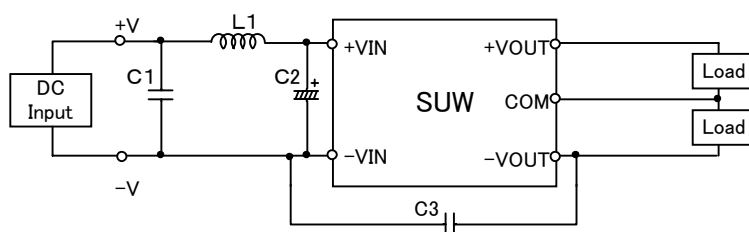


Fig.2 Testing circuitry 2

L1 :	10 μ H	GLF2518T100K	(TDK)
C1 :	100V 0.47 μ F	C3216JB2A474K	(TDK)
C2 :	100V 10 μ F	UPW2A100M	(NICHICON)
C3 :	1000V 470pF	GRM31BR33A471K	(MURATA)