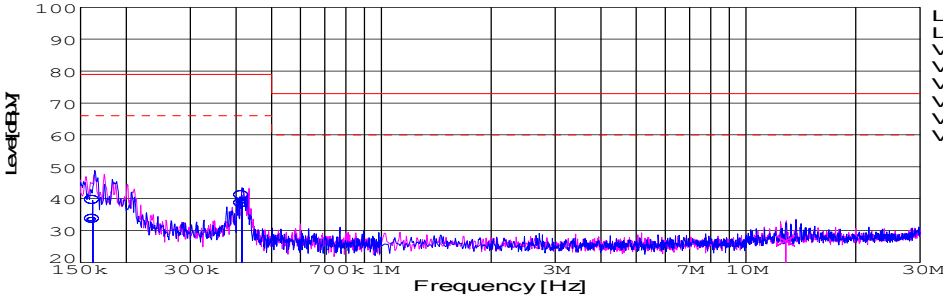
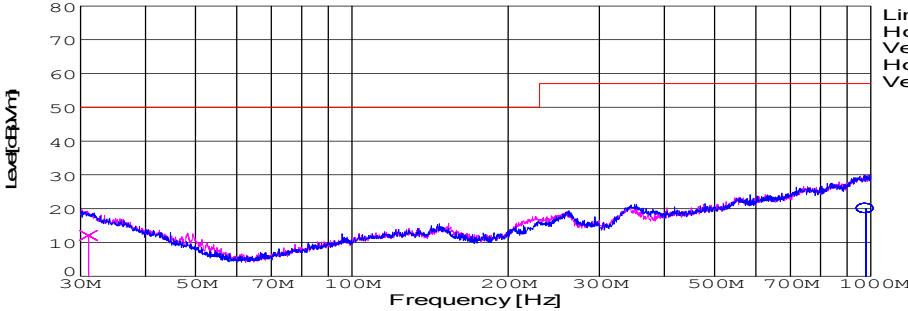


DATA SHEET							Date	13-May-05		
Model	SUW30515						Temp.	25 degreeC		
Test	EMI Line conduction & Radiated emission						Humid.	45 %RH		
							Tested by	T.Ohara		
LINE CONDUCTION										
Model Name : SUW30515			Temp. : 25							
Model No. :			Humi. : 45							
Serial No. :			Date : 2005/5/13 10:03							
Points : 3			Test Equip. : R3132,ESPC							
Detector : PEAK/QP/Ave.			Load Line : 10mm							
Line Mode : VA/VB			Comment : T.Ohara							
Power Supply : DC 5V										
Limit1: [EN 55022] Class A(QP)										
Limit2: [EN 55022] Class A(Ave.)										
							Limit1(QP) Limit2(Ave.) VA(PEAK) VB(PEAK) VA(QP) VA(Ave.) VB(QP) VB(Ave.)			
							DC 5V +15V0.1A -15V0.1A			
Frequency [MHz]	Meter Reading (Ave.) [dBuV]	Meter Reading (QP) [dBuV]	Factor [dB]	Level(Ave.) [dBuV]	Level(QP) [dBuV]	Line	Limit(Ave.) [dBuV]	Limit(QP) [dBuV]	Margin(Ave.) [dB]	Margin(QP) [dB]
0.1619	23.8	29.6	9.8	33.6	39.4	VA	66	79	32.4	39.6
0.415	28.8	31.3	9.9	38.7	41.2	VA	66	79	27.3	37.8
12.8422	6.9	16.6	10.2	17.1	26.8	VB	60	73	42.9	46.2
RADIATED EMISSION										
Model Name : SUW30515			Temp. : 25							
Model No. :			Humi. : 45							
Serial No. :			Date : 2005/5/13 10:15							
Points : 2			Test Equip. : R3132,ESPC							
Detector : PEAK/QP			Load Line : 10mm							
Polarization : Hori. & Vert.			Comment :							
Power Supply : DC 5V										
Limit: [EN 55022] Class A<3m>										
							Limit(QP) Horizontal(PEAK) Vertical(PEAK) Horizontal(QP) Vertical(QP)			
							DC 5V +15V0.1A -15V0.1A			
Frequency [MHz]	MeterReading (QP) [dBuV]	Ant. Type	Antenna Factor [dB/m]	Cable & Preamp [dB]	Level(QP) [dBuV/m]	Angle [°]	Height [cm]	Polar.	Limit [dBuV/m]	Margin [dB]
978.396	24.1	BL	25.2	-29.3	20	147	149	Hori.	57	37
31.066	26.7	BL	17.7	-32.3	12.1	16	104	Vert.	50	37.9

COSEL

Conditions

Test : EMI
Model Name : SUS/SUW 305

○Photographs of Test Set-Up

LINE CONDUCTION



RADIATED EMISSION



○Testing circuitry

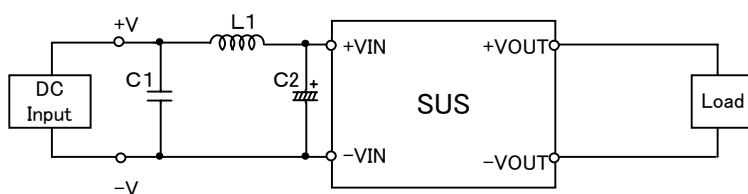


Fig.1 Testing circuitry 1

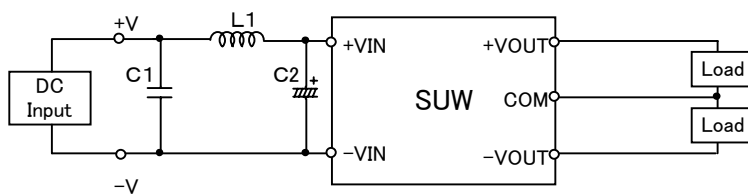


Fig.2 Testing circuitry 2

L1 :	2.2 μ H	CY3H-2R2	(KORIN ELECTRONICS)
C1 :	16V 1 μ F	C2012JB1C105K	(TDK)
C2 :	16V 220 μ F	UPW1C221M	(NICHICON)