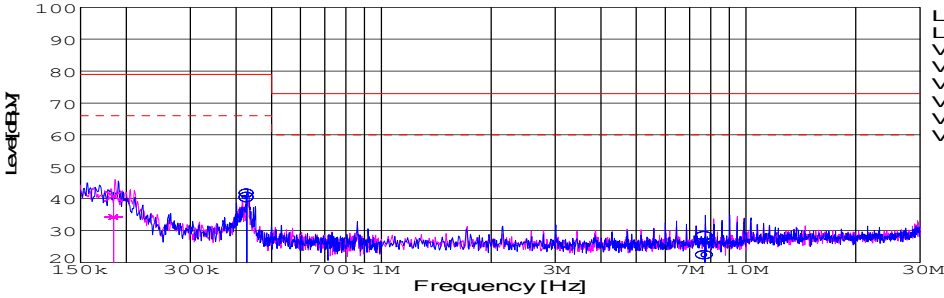
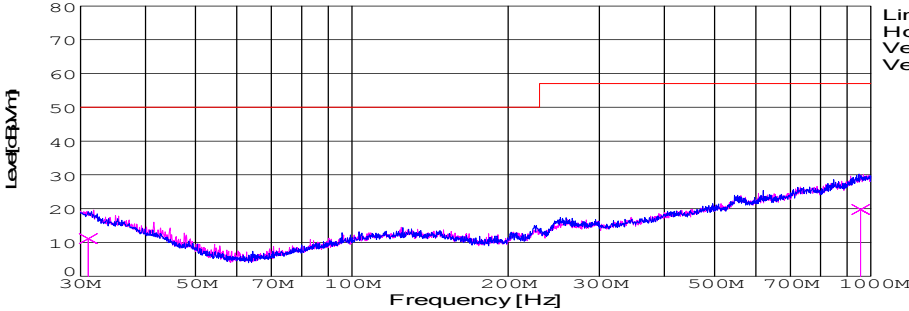


DATA SHEET							Date	13-May-05		
Model	SUW31215						Temp.	25 degreeC		
Test	EMI Line conduction & Radiated emission						Humid.	45 %RH		
							Tested by	T.Ohara		
LINE CONDUCTION										
Model Name : SUW31215			Temp. : 25							
Model No. :			Humi. : 45							
Serial No. :			Date : 2005/5/13 14:10							
Points : 3			Test Equip. : R3132,ESPC							
Detector : PEAK/QP/Ave.			Load Line : 10mm							
Line Mode : VA/VB			Comment : T.Ohara							
Power Supply : DC 12V										
Limit1: [EN 55022] Class A(QP)										
Limit2: [EN 55022] Class A(Ave.)										
							Limit1(QP) Limit2(Ave.) VA(PEAK) VB(PEAK) VA(QP) VA(Ave.) VB(QP) VB(Ave.) DC 12V +15V0.1A -15V0.1A			
Frequency [MHz]	Meter Reading (Ave.) [dBuV]	Meter Reading (QP) [dBuV]	Factor [dB]	Level(Ave.) [dBuV]	Level(QP) [dBuV]	Line	Limit(Ave.) [dBuV]	Limit(QP) [dBuV]	Margin(Ave.) [dB]	Margin(QP) [dB]
0.428	30.4	31.7	9.9	40.3	41.6	VA	66	79	25.7	37.4
7.7241	12.1	17.9	10.1	22.2	28	VA	60	73	37.8	45
0.1844	24.5	31	9.8	34.3	40.8	VB	66	79	31.7	38.2

RADIATED EMISSION										
Model Name : SUW31215			Temp. : 25							
Model No. :			Humi. : 45							
Serial No. :			Date : 2005/5/13 14:56							
Points : 2			Test Equip. : R3132,ESPC							
Detector : PEAK/QP			Load Line : 10mm							
Polarization : Vertical			Comment :							
Power Supply : DC 12V										
Limit: [EN 55022] Class A<3m>										
							Limit(QP) Horizontal(PEAK) Vertical(PEAK) Vertical(QP) DC 12V +15V0.1A -15V0.1A			
Frequency [MHz]	MeterReading (QP) [dBuV]	Ant. Type	Antenna Factor [dB/m]	Cable & Preamp [dB]	Level(QP) [dBuV/m]	Angle [°]	Height [cm]	Polar.	Limit [dBuV/m]	Margin [dB]
955.865	23.9	BL	25.1	-29.3	19.7	9	104	Vert.	57	37.3
31.058	25.7	BL	17.7	-32.3	11.1	344	137	Vert.	50	38.9

COSEL

Conditions

Test : EMI
Model Name : SUS/SUW 312

○Photographs of Test Set-Up

LINE CONDUCTION



RADIATED EMISSION



○Testing circuitry

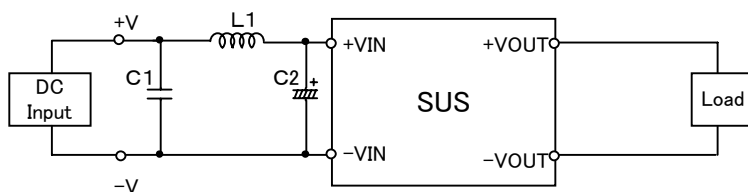


Fig.1 Testing circuitry 1

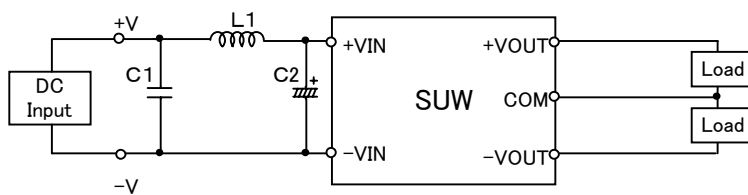


Fig.2 Testing circuitry 2

L1 :	4.7 μ H	CY3H-4R7	(KORIN ELECTRONICS)
C1 :	25V 1 μ F	C2012JB1E105K	(TDK)
C2 :	25V 100 μ F	UPW1E101M	(NICHICON)