

Date : Mar.7,2025

Temperature increase of main components: 主要部品温度上昇

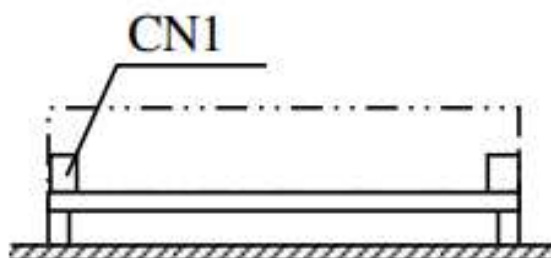
Model: TECS10F

1. Conditions

- (1) Input :AC 85 ~ 264 [V]
 (2) Output :Rated output *Derating is required at AC85~90[V] input.
 (3) Mounting method :Shown as Fig.1.1

2. Result

| No. | Parts name | Symbol No. | Increase (ΔT) | | | | | | Rated temp. [°C] | Reference |
|-----|-------------------------|------------|-------------------------|-----|-----|-----|--|--|------------------|----------------|
| | | | [deg] | | | | | | | |
| | | | 5V | 12V | 15V | 24V | | | | |
| 1 | Input Rectifier | SS101 | 32 | 26 | 30 | 24 | | | 150 | Junction Temp. |
| 2 | Input Capacitor | C111 | 26 | 20 | 27 | 19 | | | 105 | |
| 3 | Switching Transistor | TR301 | 56 | 65 | 66 | 51 | | | 150 | Junction Temp. |
| 4 | Transformer | T101 | 37 | 31 | 39 | 30 | | | 130 | |
| 5 | Output Rectifying Diode | D601 | 66 | – | – | 37 | | | 150 | Junction Temp. |
| 6 | Output Rectifying Diode | D601 | – | 45 | 48 | – | | | 175 | Junction Temp. |
| 7 | Output Capacitor | C602 | 45 | 29 | – | – | | | 105 | |
| 8 | Output Capacitor | C602 | – | – | 33 | 25 | | | 125 | |
| 9 | | | | | | | | | | |
| 10 | | | | | | | | | | |
| 11 | | | | | | | | | | |
| 12 | | | | | | | | | | |
| 13 | | | | | | | | | | |
| 14 | | | | | | | | | | |
| 15 | | | | | | | | | | |
| 16 | | | | | | | | | | |
| 17 | | | | | | | | | | |
| 18 | | | | | | | | | | |
| 19 | | | | | | | | | | |
| 20 | | | | | | | | | | |



(Side view)

Fig.1.1 Mounting method
(Normal position)

*All information presented herein are not guaranteed.

*本資料は参考資料であり、その内容を保証するものではありません。