

Date : Oct.2,2023

## Temperature increase of main components: 主要部品温度上昇

Model : TEPS65F

### 1. Conditions

- (1) Input : AC 85 ~ 264 [V]  
 (2) Output : Rated output \*Derating is required at AC85~90[V] input.  
 (3) Mounting method : Shown as Fig.1.1

### 2. Result

No.	Parts name	Symbol No.	Increase ( $\Delta T$ ) [deg]			Rated temp. [°C]	Reference
			5V	12V	24V		
1	Rectifier (Input)	SS102	63	80	76	150	Junction Temp.
2	Input Capacitor	C111	37	45	40	105	
3	Input Choke coil	L111	55	70	66	125	
4	Switching transistor (Low Side)	TR501	66	83	74	150	Junction Temp.
5	Switching transistor (High Side)	TR511	65	79	72	150	Junction Temp.
6	Rectifying transistor (Output)	TR601	68	77	69	175	Junction Temp.
7	Output Choke coil	L601	62	64	51	125	
8	Output Capacitor	C704	36	38	33	125	
9							
10							
11							
12							
13							
14							
15							
16							
17							
18							
19							
20							

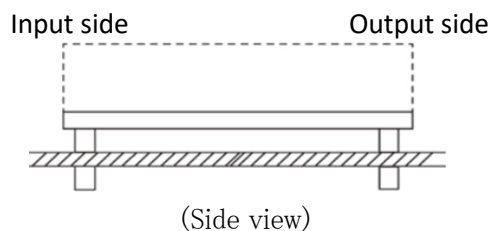


Fig.1.1 Mounting method  
(Normal position)

\*All information presented herein are not guaranteed.

\*本資料は参考資料であり、その内容を保証するものではありません。