



TEST DATA OF TSD-800-□□□

EMI/EMC Filter

Jul. 06 , 2023

Approved by : Kazunari Asano
Design Manager

Prepared by : Hiroki Ota
Design Engineer

COSEL CO.,LTD.



CONTENTS

1.Attenuation Characteristics 1

2.Leakage Current 4

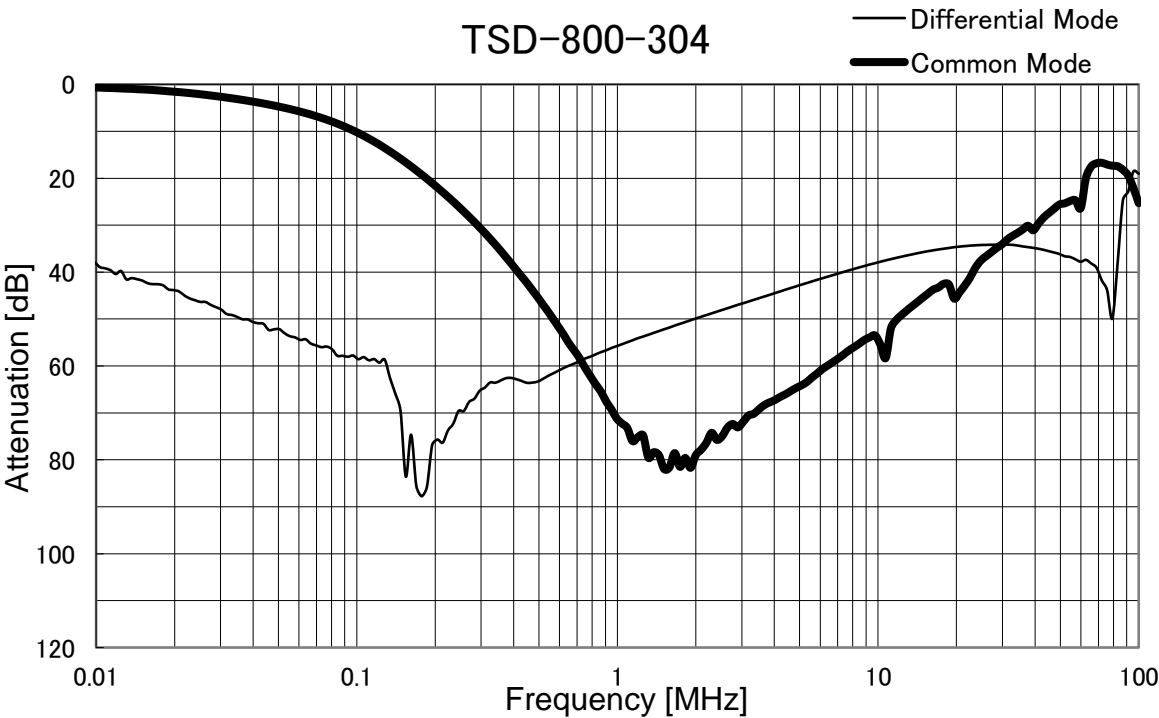
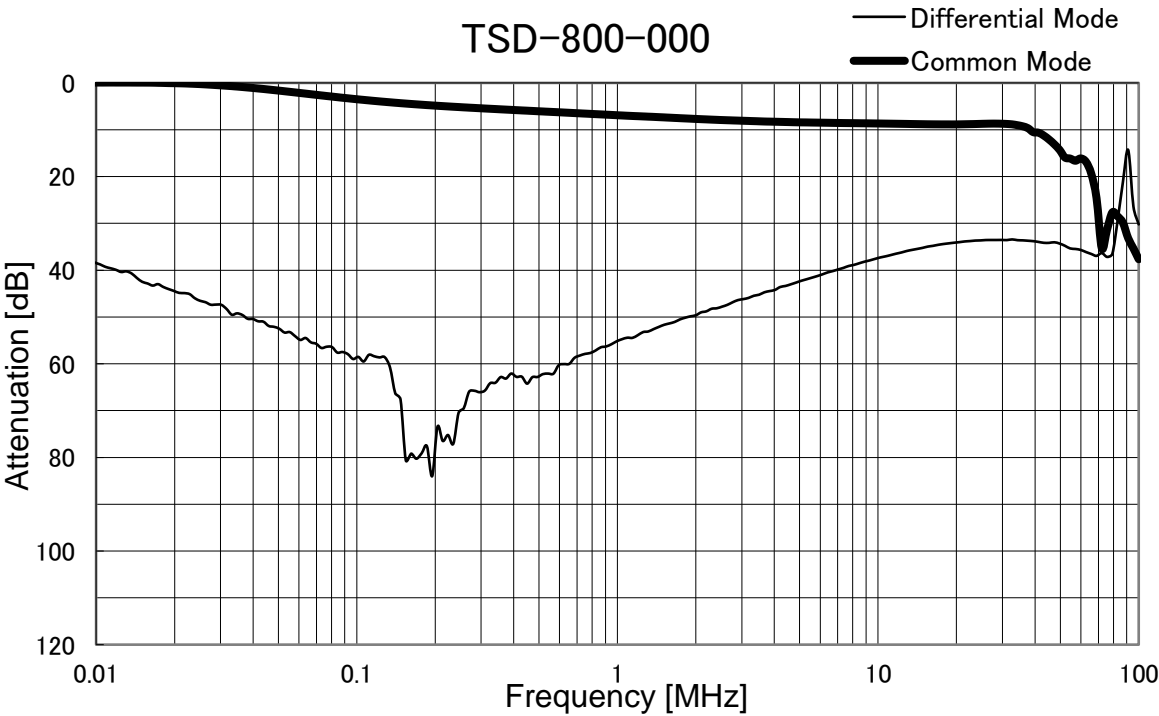
3.Figure of Testing Circuitry 5

(Final Page 6)



Model		TSD-800-□□□
Item		Attenuation Characteristics
Object		_____

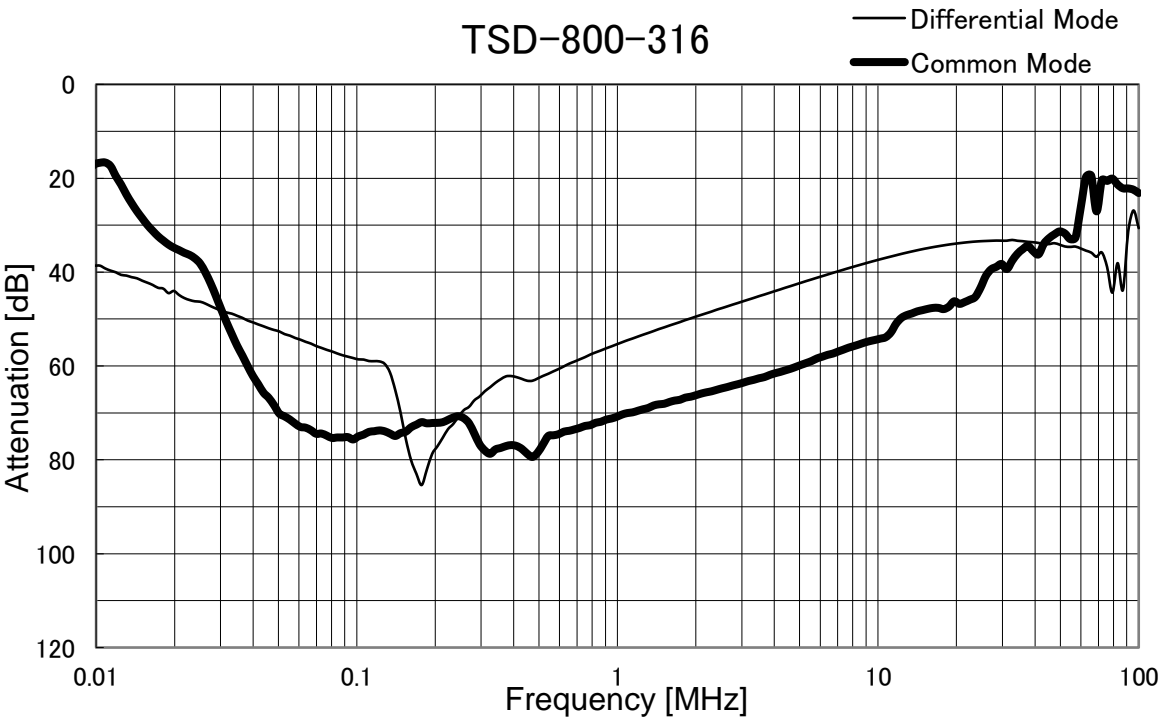
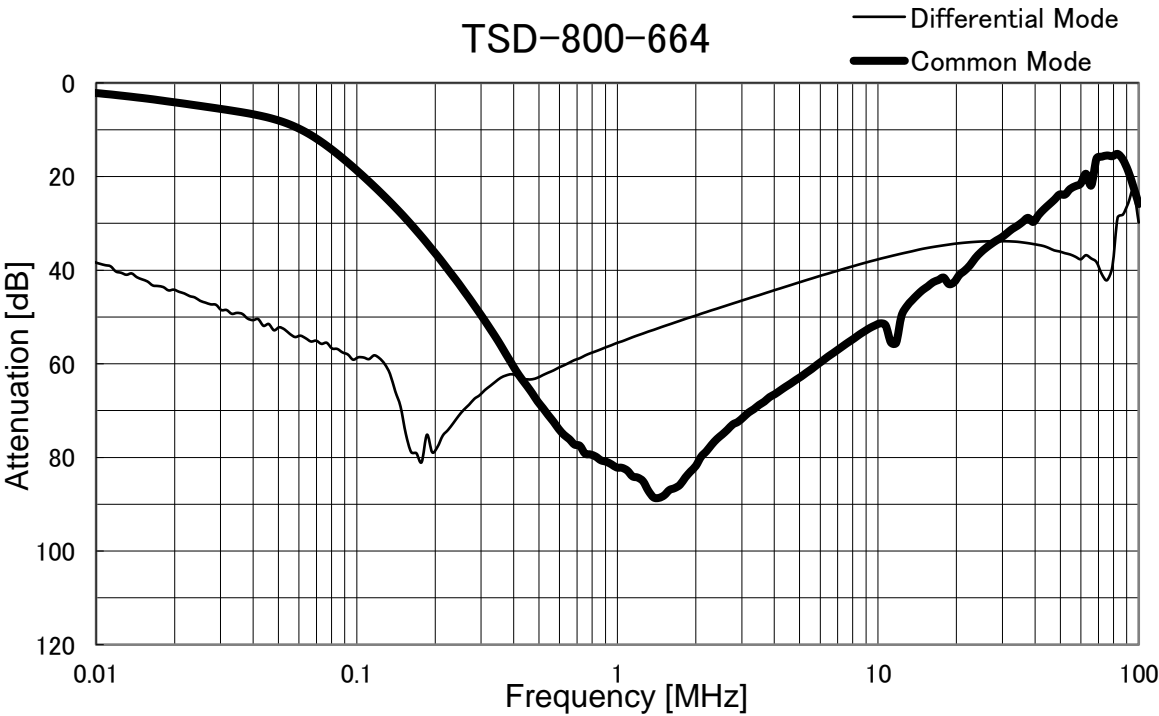
Temperature 25°C
Testing Circuitry Figure A





Model	TSD-800-□□□
Item	Attenuation Characteristics
Object	_____

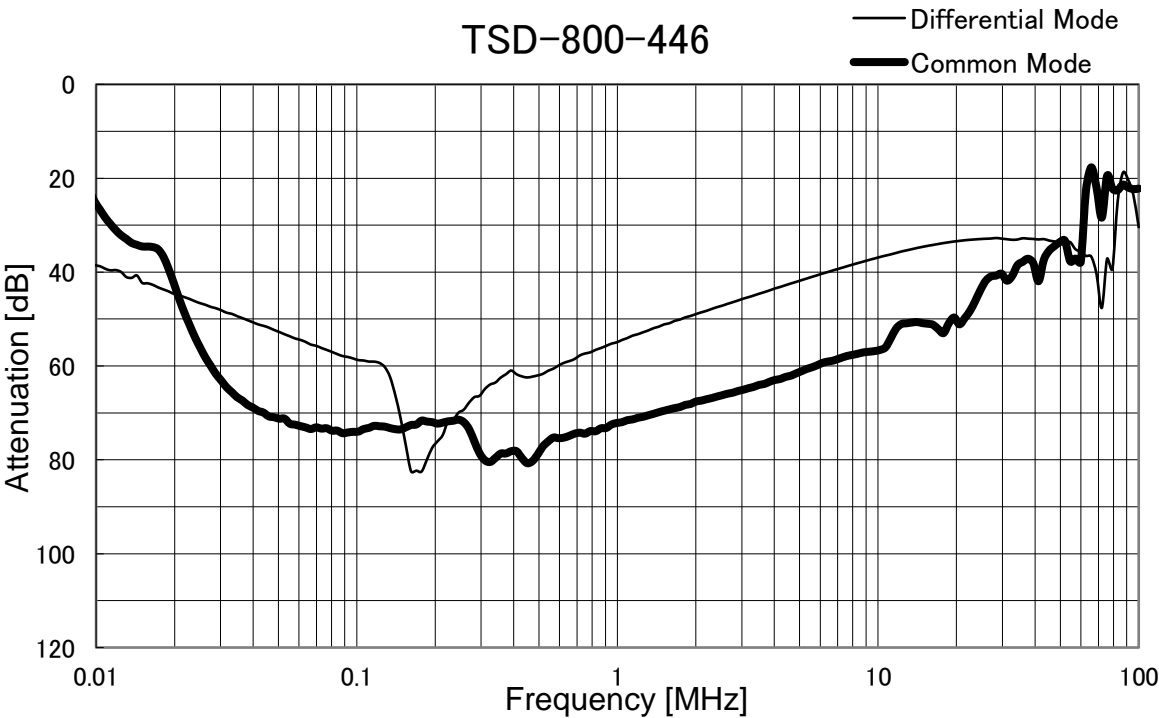
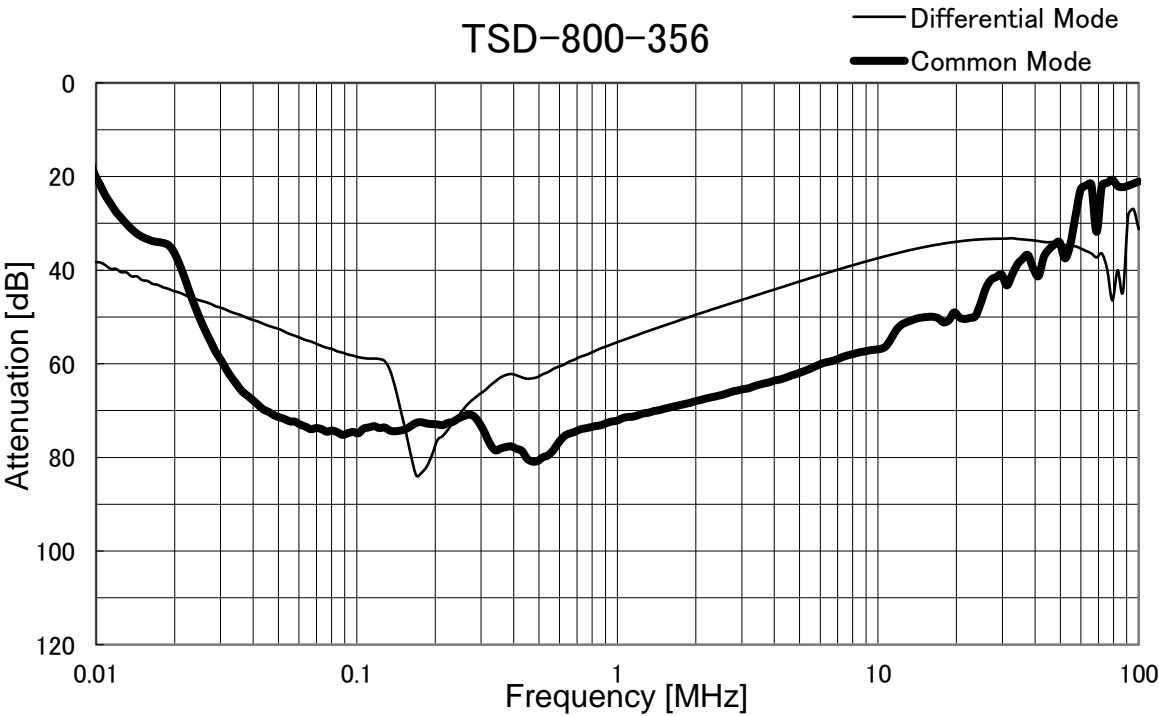
Temperature 25°C
Testing Circuitry Figure A





Model	TSD-800-□□□
Item	Attenuation Characteristics
Object	_____

Temperature 25°C
Testing Circuitry Figure A





Model		TSD-800-□□□
Item		Leakage Current
Object		_____

Temperature 25°C
Testing Circuitry Figure B

1.Results

[mA]

Model	Standards	Voltage system	Input Volt.		Note
			250[V]	500[V]	
TSD-800-000	UL60939	Δ-connection	0.01	0.01	
		Y-connection	0.00	0.00	
TSD-800-304	UL60939	Δ-connection	7.80	15.60	
		Y-connection	0.01	0.02	
TSD-800-664	UL60939	Δ-connection	16.00	32.00	
		Y-connection	0.02	0.05	
TSD-800-316	UL60939	Δ-connection	95.00	152.00	Δ-connection's rated voltage is 400V(440Vmax)
		Y-connection	0.02	0.05	
TSD-800-356	UL60939	Δ-connection	95.00	152.00	Δ-connection's rated voltage is 400V(440Vmax)
		Y-connection	0.05	0.10	
TSD-800-446	UL60939	Δ-connection	95.00	152.00	Δ-connection's rated voltage is 400V(440Vmax)
		Y-connection	0.06	0.10	

2.Condition

Leakage current value is concluded after measuring both phases of AC input and by choosing the larger one.

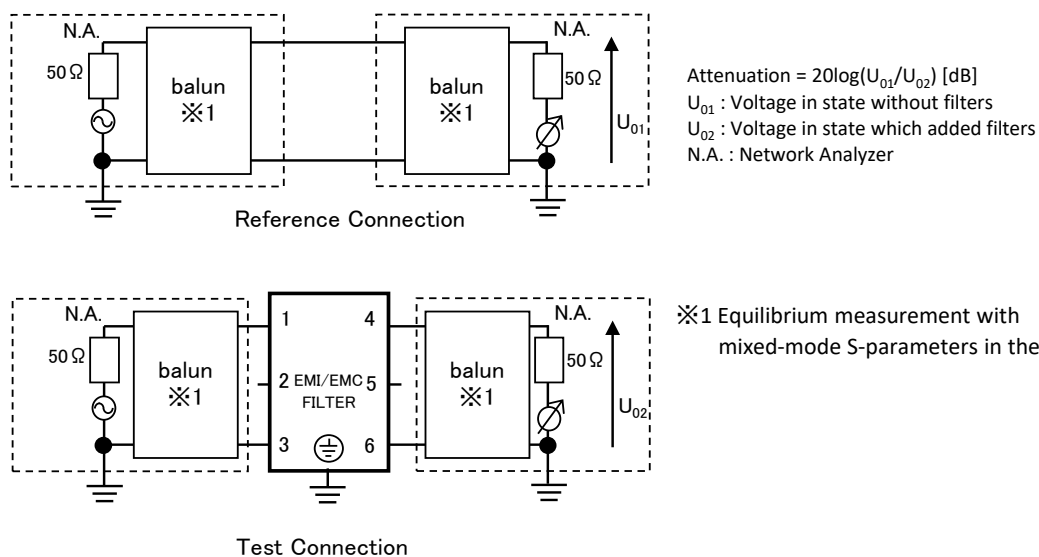


Figure A - 1 Differential mode attenuation measurement

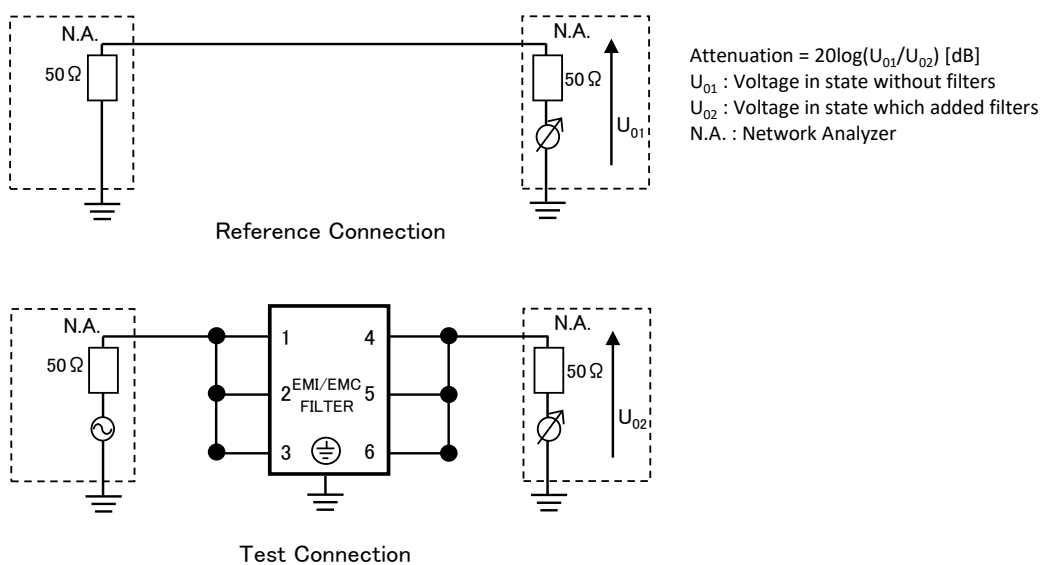


Figure A - 2 Common mode attenuation measurement

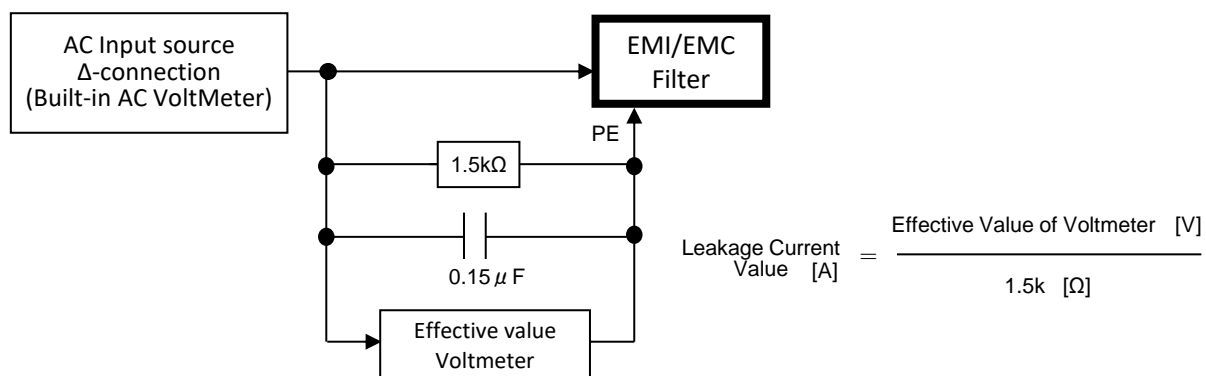


Figure B - 1 Leakage current measurement (UL60939 Δ-connection)

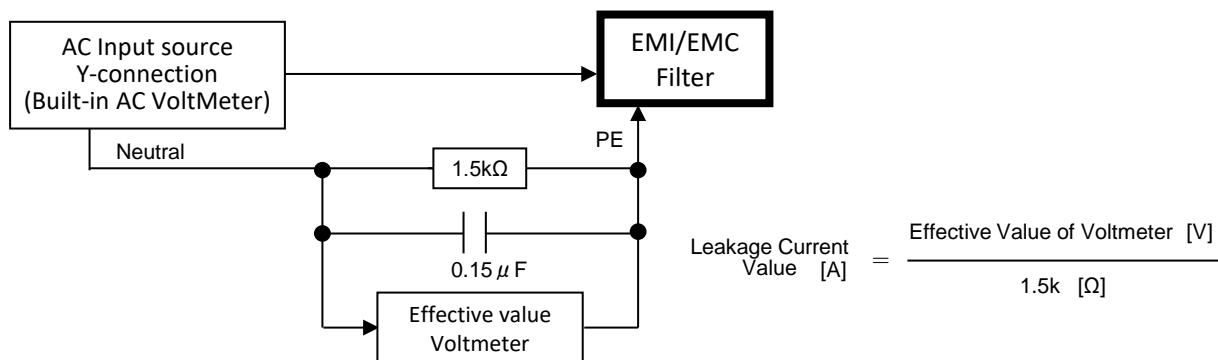


Figure B - 2 Leakage current measurement (UL60939 Y-connection)