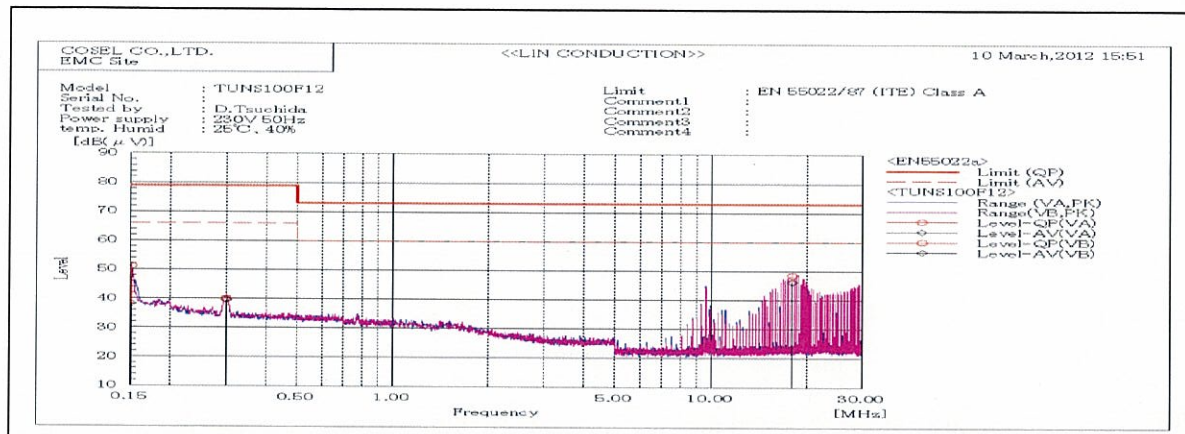
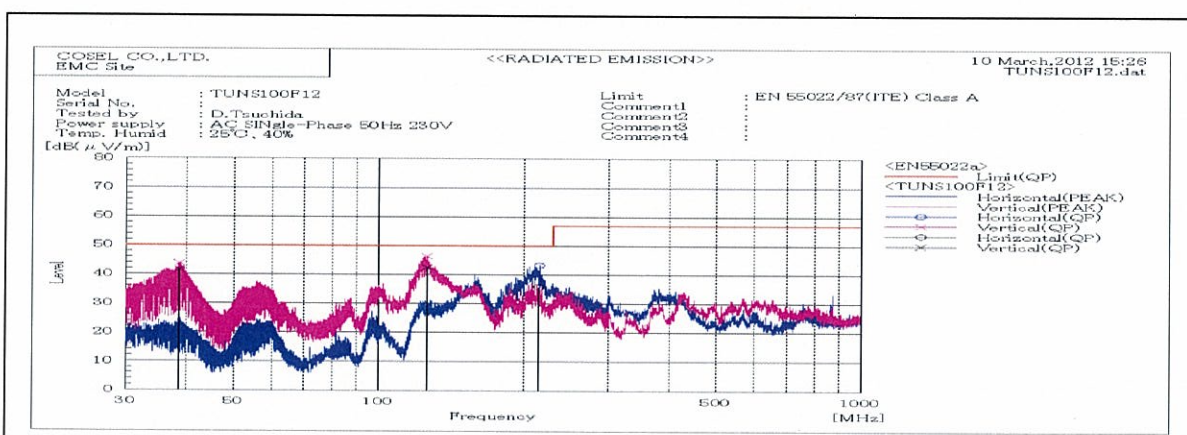


DATA SHEET		Date	18-Apr-12
Model	TUNS100F12	Temp.	25 degreeC
Test	EMI	Humid.	40 %RH
	Line conduction & Radiated emission	Tested by	D.Tsuchida



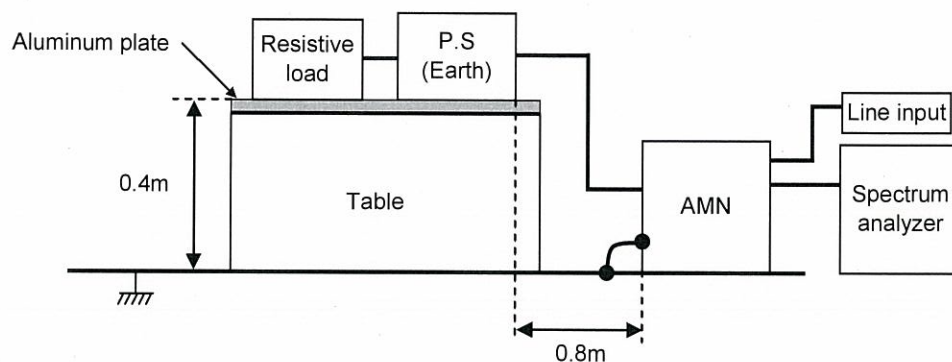
Frequency MHz	Line Phase	Reading dB(uV)		Factor dB	Level dB(uV)		Limit dB(uV)		Margin dB		Pass/ Fail
		QP	AV		QP	AV	QP	AV	QP	AV	
0.15091	VA	41	28	10.2	51.2	38.2	79	66	27.8	27.8	Pass
0.29943	VA	29.8	29.4	10.2	40	39.6	79	66	39	26.4	Pass
0.29977	VB	29.7	29.3	10.2	39.9	39.5	79	66	39.1	26.5	Pass
17.9761	VB	37.4	35	11.3	48.7	46.3	73	60	24.3	13.7	Pass



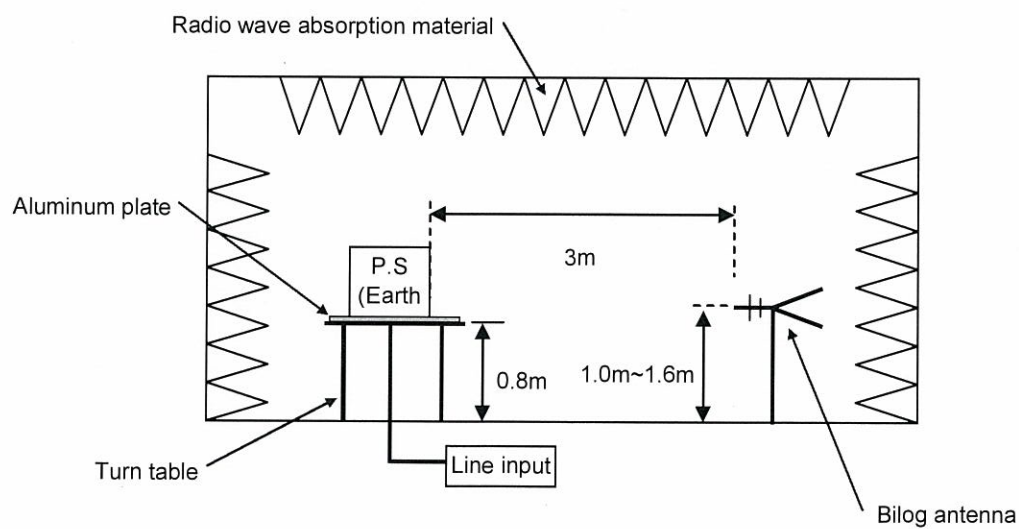
Frequency MHz	Polarization	Stability	Reading dB(uV)	Space Loss dB	Level dB(mW)	Limit dB(mW)	Margin dB	Height cm	Angle deg	Pass/Fail
			QP		QP	QP	QP			
38.646	V	Stable	53	-11.3	41.7	50	8.3	103	270	Pass
125.868	V	Stable	56	-13.4	42.6	50	7.4	113	94	Pass
214.76	H	Stable	46	-10.1	35.9	50	14.1	155	30	Pass

DATA SHEET		Date	17-Apr-12
Model	Circuit used for measurement	Temp.	25 degreeC
Test	EMI Line conduction & Radiated emission	Humid.	40 %RH
		Tested by	D.Tsuchida

1. Line conduction



2. Radiated emission

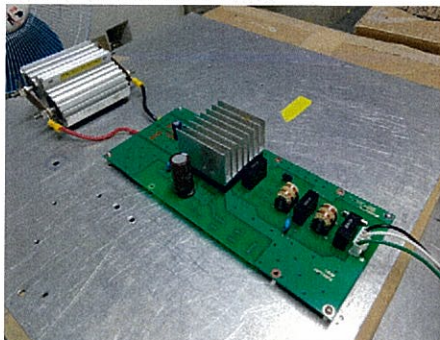


Test: EMI

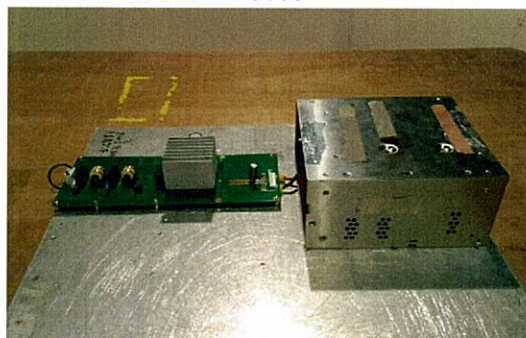
Model Name: TUNS100F Series

○ Photographs of Test Set-Up

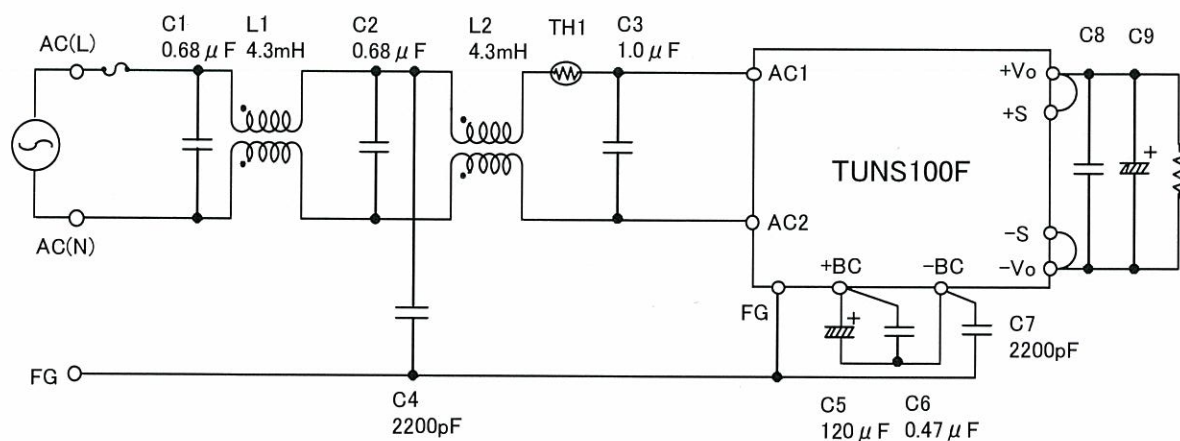
LINE CONDUCTION



RADIATED EMISSION



○ Test circuit



L1,L2 : SSB11V-R17043(NEC TOKIN)

TH1 : 8D2-11(SEMITEC)

C8 : TUNS100F05 10 μF

TUNS100F12 10 μF

TUNS100F24 4.7 μF

C9 : TUNS100F05 2200 μF

TUNS100F12 470 μF

TUNS100F24 220 μF