



## DATA SHEET

Date 25-May-15

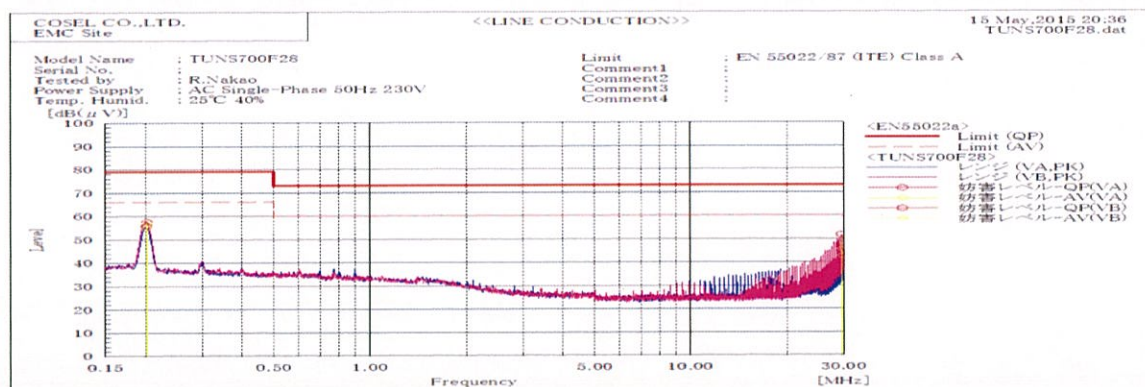
Model TUNS700F28

Temp. 25 degreeC

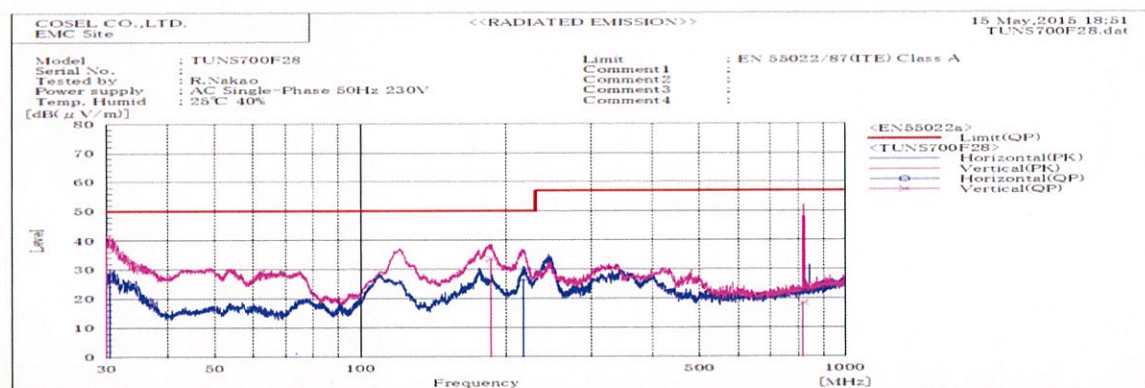
Test EMI  
Line conduction & Radiated emission

Humid. 40 %RH

Tested by R.Nakao



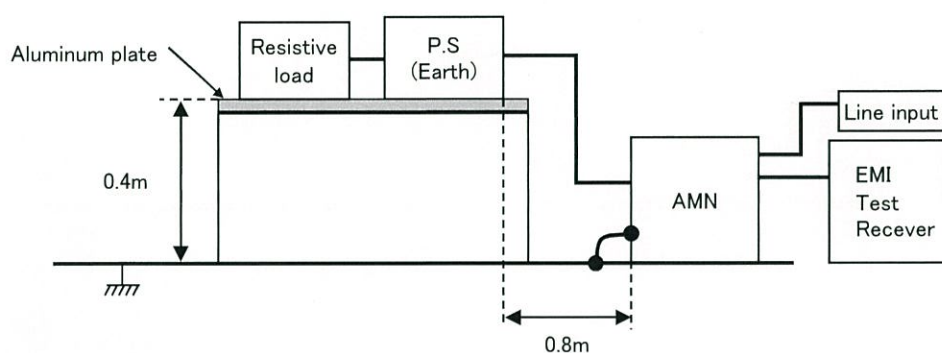
| Frequency<br>MHz | Harm | Line<br>Phase | Reading<br>dB(μV) |      | Factor<br>dB | Level<br>dB(μV) |      | Limit<br>dB(μV) |      | Margin<br>dB |      | Pass/<br>Fail | Remark |
|------------------|------|---------------|-------------------|------|--------------|-----------------|------|-----------------|------|--------------|------|---------------|--------|
|                  |      |               | QP                | AV   |              | QP              | AV   | QP              | AV   | QP           | AV   |               |        |
| 0.20239          |      | VB            | 37.4              | 37.2 | 20.2         | 57.6            | 57.4 | 79.0            | 66.0 | 21.4         | 8.6  | Pass          |        |
| 0.20155          |      | VA            | 35.8              | 35.2 | 20.2         | 56.0            | 55.4 | 79.0            | 66.0 | 23.0         | 10.6 | Pass          |        |
| 29.6391          |      | VA            | 26.9              | 21.7 | 20.8         | 47.7            | 42.5 | 73.0            | 60.0 | 25.3         | 17.5 | Pass          |        |
| 29.636           |      | VB            | 30.8              | 24.5 | 20.9         | 51.7            | 45.4 | 73.0            | 60.0 | 21.3         | 14.6 | Pass          |        |



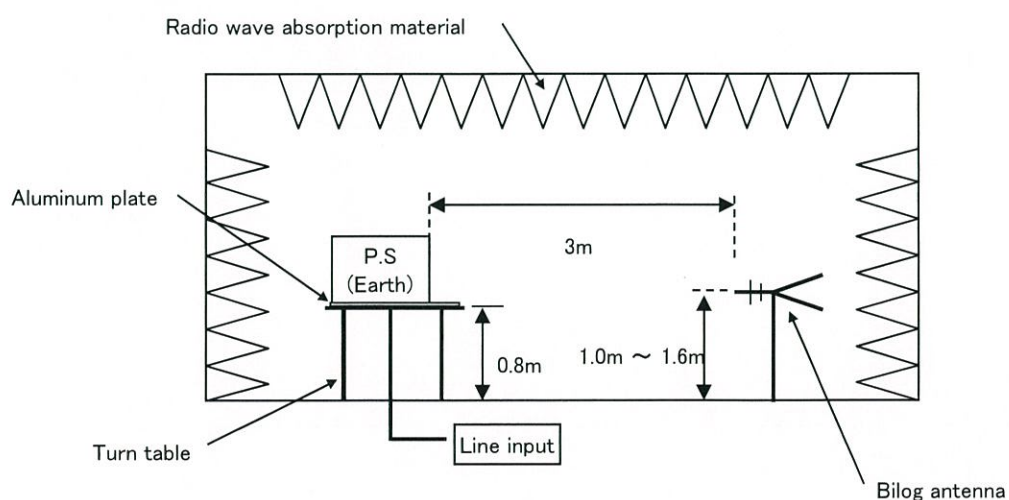
| Frequency<br>MHz | Polarization | Stability | Reading<br>dB(μV) |       | Space<br>Loss | Level<br>dB(mW) |    | Limit<br>dB(mW) | Margin<br>dB | Pass/Fail | Height<br>cm | Angle<br>deg | Remark |
|------------------|--------------|-----------|-------------------|-------|---------------|-----------------|----|-----------------|--------------|-----------|--------------|--------------|--------|
|                  |              |           | QP                | AV    |               | QP              | AV |                 |              |           |              |              |        |
| 30.023           | V            | Stable    | 53.1              | -13.5 |               | 39.6            |    | 50.0            | 10.4         | Pass      | 126          | 154          |        |
| 30.458           | H            | Stable    | 43.0              | -13.7 |               | 29.3            |    | 50.0            | 20.7         | Pass      | 149          | 227          |        |
| 185.322          | V            | Stable    | 49.6              | -16.0 |               | 33.6            |    | 50.0            | 16.4         | Pass      | 105          | 59           |        |
| 216.928          | H            | Stable    | 47.7              | -20.7 |               | 27.0            |    | 50.0            | 23.0         | Pass      | 151          | 245          |        |
| 818.672          | V            | Stable    | 25.5              | -7.2  |               | 18.3            |    | 57.0            | 38.7         | Pass      | 111          | 243          |        |

| DATA SHEET |                                            | Date      | 25-May-15  |
|------------|--------------------------------------------|-----------|------------|
| Model      | Circuit used for measurement               | Temp.     | 25 degreeC |
| Test       | EMI<br>Line conduction & Radiated emission | Humid.    | 40 %RH     |
|            |                                            | Tested by | R.Nakao    |

## 1. Line conduction



## 2. Radiated emission



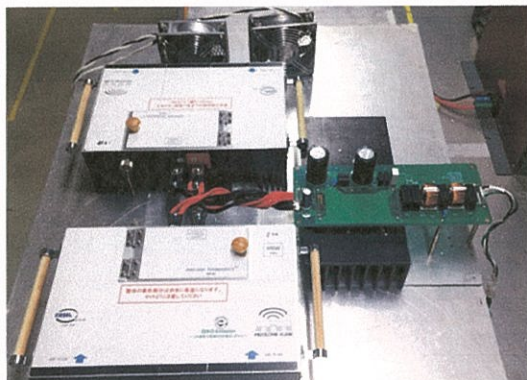


Test: EMI

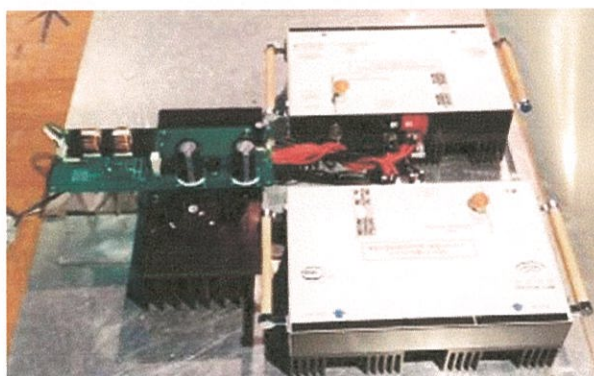
Model Name: TUNS700F Series

○ Photographs of Test Set-Up

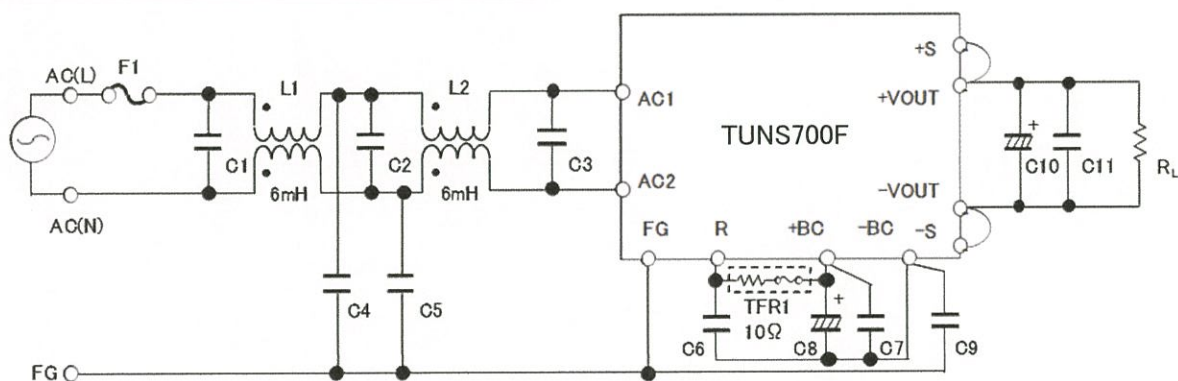
LINE CONDUCTION



RADIATED EMISSION



○ Test circuit



- L1,L2 : ADM-25-12-060T(Ueno)  
 C1,C2 : 1.5  $\mu$ F 275V Film Capacitor  
 C3 : 1.5  $\mu$ F 275V Film Capacitor  $\times$  2  
 C4,C5,C9 : 2200pF Ceramic Capacitor  
 C6,C7 : 0.68  $\mu$ F 450V Film Capacitor  $\times$  2  
 C8 : 390  $\mu$ F 450V Electrolytic Capacitor  $\times$  2  
 C10 : TUNS700F12 2200  $\mu$ F 25V Electrolytic Capacitor  
 TUNS700F28 1000  $\mu$ F 50V Electrolytic Capacitor  
 TUNS700F48 470  $\mu$ F 63V Electrolytic Capacitor

- C11 : TUNS700F12 10  $\mu$ F Ceramic Capacitor  
 TUNS700F28 4.7  $\mu$ F Ceramic Capacitor  
 TUNS700F48 2.2  $\mu$ F Ceramic Capacitor