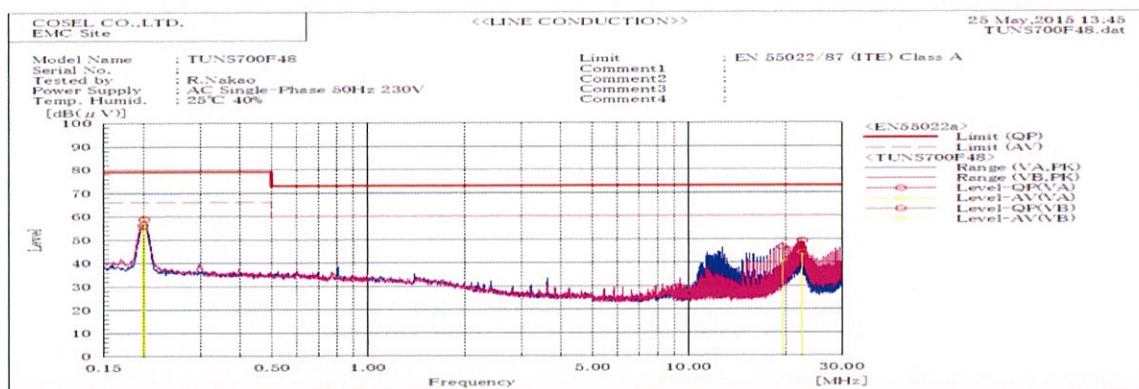
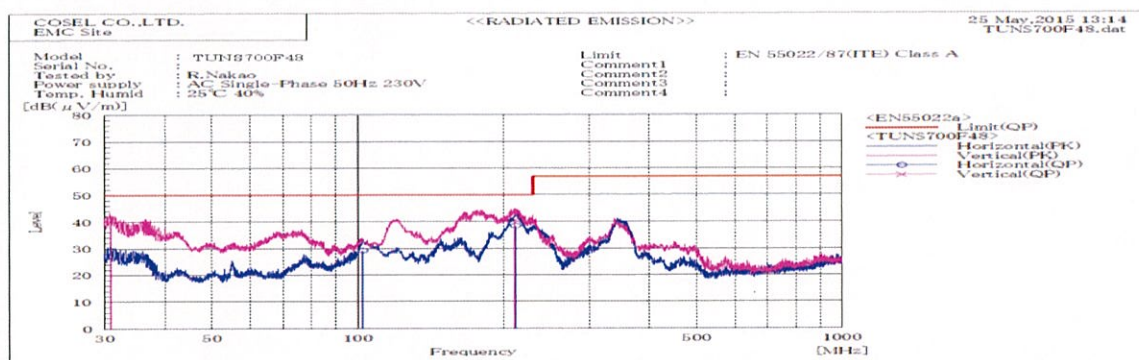




DATA SHEET		Date	25-May-15
Model	TUNS700F48	Temp.	25 degreeC
Test	EMI	Humid.	40 %RH
	Line conduction & Radiated emission	Tested by	R.Nakao



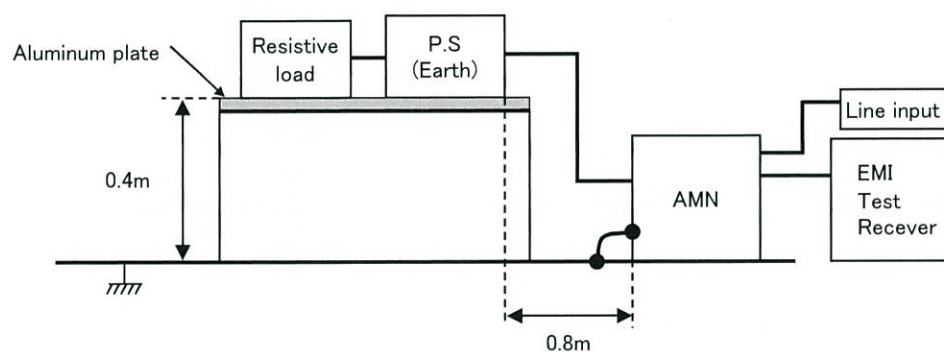
Frequency MHz	Harm	Line Phase	Reading dB(uV)		Factor dB	Level dB(uV)		Limit dB(uV)		Margin dB		Pass/ Fail	Remark
			QP	AV		QP	AV	QP	AV	QP	AV		
0.20133		VB	38.7	38.0	20.1	58.8	58.1	79.0	66.0	20.2	7.9	Pass	
0.1992		VA	36.3	34.4	20.1	56.4	54.5	79.0	66.0	22.6	11.5	Pass	
19.53225		VA	25.6	19.9	21.0	46.6	40.9	73.0	60.0	26.4	19.1	Pass	
22.6167		VB	28.3	28.3	20.9	49.2	44.1	73.0	60.0	23.8	15.9	Pass	



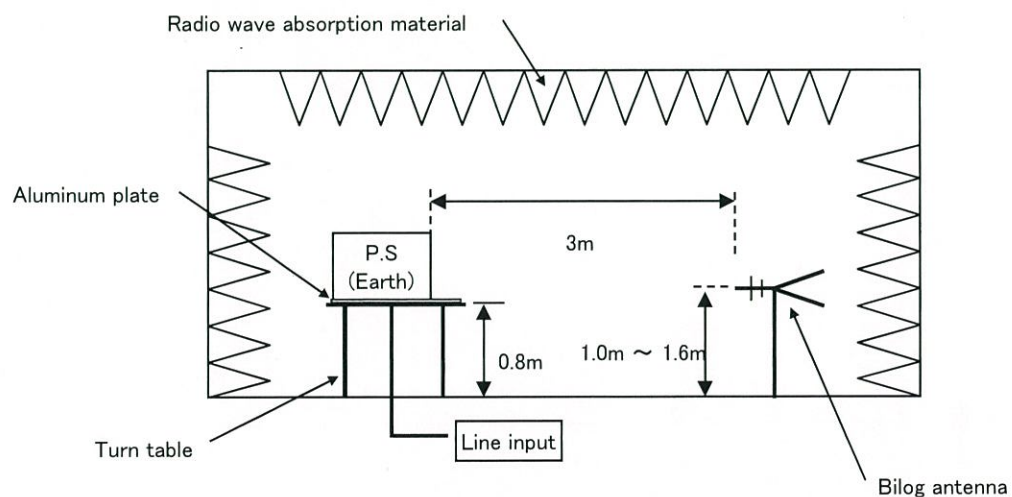
Frequency MHz	Polarization	Stability	Reading dB(uV)		Space Loss	Level dB(mW)	Limit dB(mW)	Margin dB	Pass/Fail	Height cm	Angle deg	Remark
			QP	AV		QP	QP	QP				
30.84	V	Stable	55.1	-13.7		41.4	50.0	8.6	Pass	107	150	
102.412	H	Stable	50.4	-21.2		29.2	50.0	20.8	Pass	153	191	
210.416	V	Stable	55.9	-15.3		40.6	50.0	9.4	Pass	157	271	
211.472	H	Stable	59.7	-21.3		38.4	50.0	11.6	Pass	157	4	

DATA SHEET		Date	25-May-15
Model	Circuit used for measurement	Temp.	25 degreeC
Test	EMI Line conduction & Radiated emission	Humid.	40 %RH
		Tested by	R.Nakao

1. Line conduction



2. Radiated emission

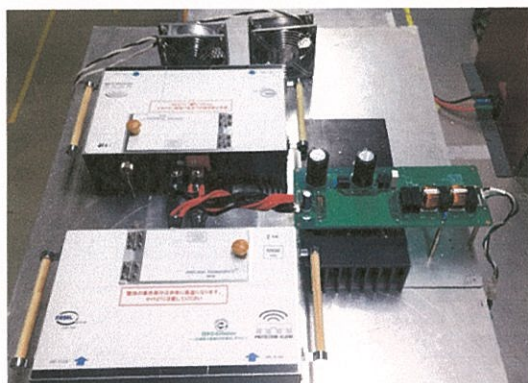


Test: EMI

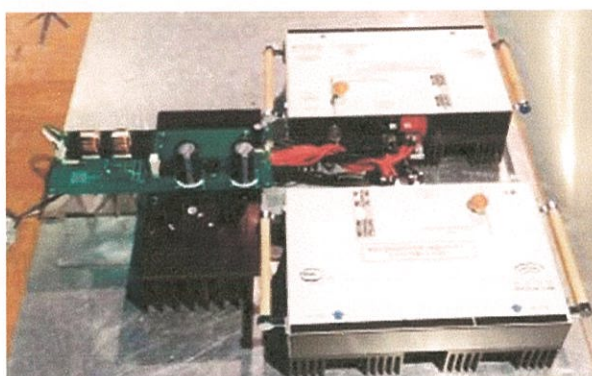
Model Name: TUNS700F Series

○ Photographs of Test Set-Up

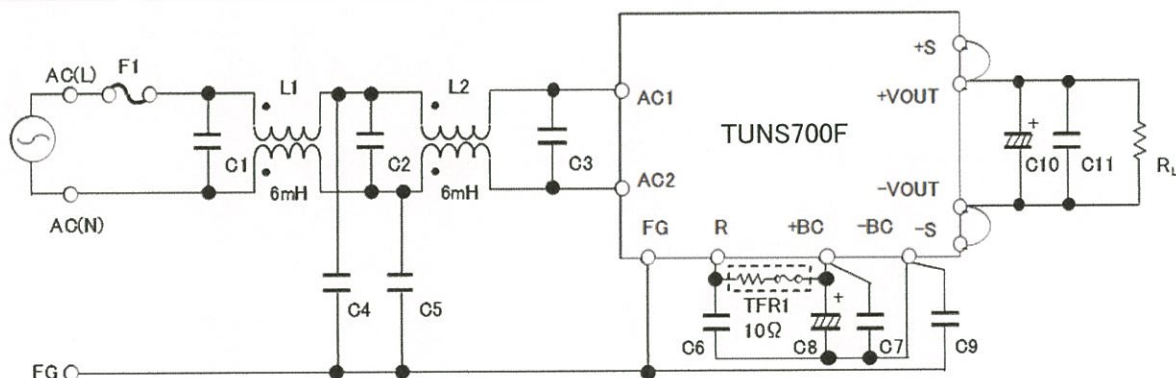
LINE CONDUCTION



RADIATED EMISSION



○ Test circuit



- L1, L2 : ADM-25-12-060T(Ueno)
 C1, C2 : 1.5 μ F 275V Film Capacitor
 C3 : 1.5 μ F 275V Film Capacitor \times 2
 C4, C5, C9 : 2200pF Ceramic Capacitor
 C6, C7 : 0.68 μ F 450V Film Capacitor \times 2
 C8 : 390 μ F 450V Electrolytic Capacitor \times 2
 C10 : TUNS700F12 2200 μ F 25V Electrolytic Capacitor
 TUNS700F28 1000 μ F 50V Electrolytic Capacitor
 TUNS700F48 470 μ F 63V Electrolytic Capacitor

- C11 : TUNS700F12 10 μ F Ceramic Capacitor
 TUNS700F28 4.7 μ F Ceramic Capacitor
 TUNS700F48 2.2 μ F Ceramic Capacitor