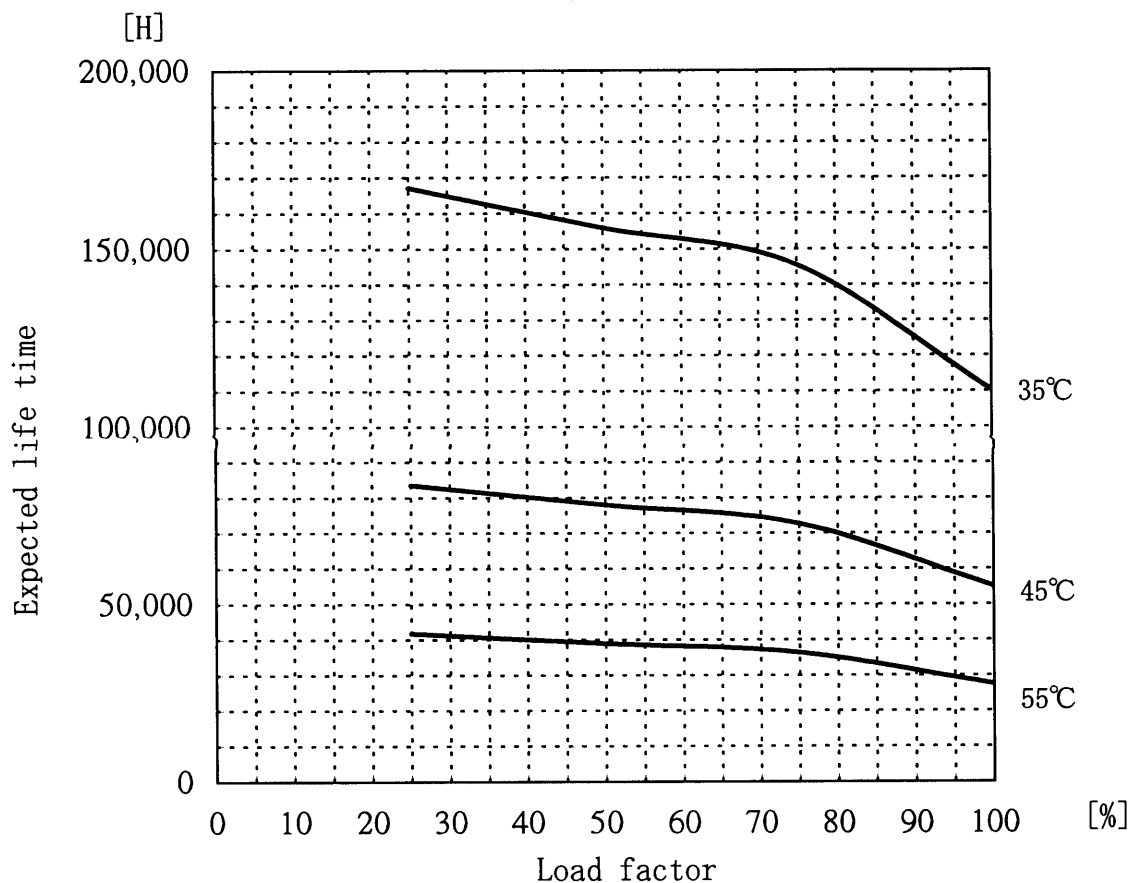


VAA1012 Expected life time



- Above expected life time is calculated according our calculation standard.
- Please refer derating curve shown in instruction manual about the maximum value of ambient temperature.
- There sometimes a case in the area of over 100,000 hours which is different from the graph caused by the degradation of sealing rubber that does not include in the calculation.

Measurement conditions

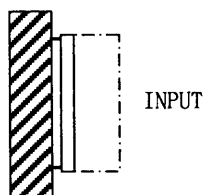
1. Input voltage AC85~132V 60Hz

2. Output voltage/current Load factor: 100% 75% 50% 25%

12V	0.90A	12V	0.68A	12V	0.45A	12V	0.23A
-----	-------	-----	-------	-----	-------	-----	-------

3. Cooling method Convection

4. Mounting method Refer below



Mounting method : (B)